

Trends in Juvenile Violence: 1997 Update

James Alan Fox, Ph.D.

Northeastern University

In March 1996, I released *Trends in Juvenile Violence: A Report to the United States Attorney General on Current and Future Rates of Juvenile Offending*, based on offense data for 1976 through 1994. This update report extends the results through 1996, with particular attention to homicides committed by and against youth.

Since the publication of the March 1996 report, there has been much discussion in both the media and professional circles about recent reductions in the level of youth violence. Tables 1-4 display rates per 100,000 of homicide victimization and offending for various age, race, and gender groups and their combinations, based on the FBI's Supplementary Homicide Reports (SHR) and corresponding population estimates from the U.S. Bureau of the Census.

The homicide victimization rates are adjusted for non-reporting agencies using the FBI's Crime Index as a benchmark. The offender data represent estimates using an imputation procedure to infer the characteristics of perpetrators in unsolved homicides by matching solved and unsolved cases on attributes of the victims, place and year. Thus, all offending rates include both known offenders plus an estimated share of unidentified perpetrators based on characteristics which are inferred or imputed.

The much-discussed and widely-welcomed drop in teen murder for 1996 is especially noteworthy in all four homicide rate tables. However, it is premature to suggest that the problem of teen violence has disappeared. The rates of youth homicide may have dropped for the past three years, but they remain at levels which are about twice as high as those of a decade ago.

Upon the release of the 1996 *Uniform Crime Reports*, it was noted that the U.S. homicide rate was as low as it had been for more than two decades. As shown in Table 1, 7.4 Americans per 100,000 were victims of homicide in 1996, down by about 25 percent over the rate five years earlier. The table also indicates that homicide victimization has declined within every category of age, race and sex. Table 2 provides rates based on estimated offender counts (known and imputed). While here too the rates have dropped in all categories over the past five years, a longer-term perspective reveals dramatic and important differences, most notably according to age group. Since 1985, just prior to the emergence of crack cocaine, the rates of

youth homicide have risen. Since the mid-1980s, the rate of murder at the hands of teenagers doubled, increasing 102%, and that by young adults, ages 18-24 increased 67%. Even while youth homicide rose and later fell, homicide among adults showed a steady decline. In fact, since 1980, the rate of homicide among older age groups has declined by approximately half. As shown in Tables 3 and 4, the sharp increases in teen homicide — victimization and offending — followed by a downturn more recently held for both races and both sexes, although the changes among girls have been far less dramatic.

If indeed teen homicide rates have plateaued in the 1990s or even if they continue to decline somewhat, future demographics could still produce a boost in the number of teen killings. As discussed in the March 1996 report, the next ten years will bring an expansion in the teenage population, particularly among African-Americans and Hispanics, as the "baby-boomerang" cohort (offspring of babyboomers) matures into adolescence. Figure 1 displays a forecast of the number of teen perpetrators of homicide, assuming constant levels of age/race/sex-specific offending rates (using a 1994-1996 average) and applying sex/race-specific projections of the population of 14-17 year-olds. If only because of demographic shifts, the annual number of teen killers could once again surpass 4,000, just as it did in the early 1990s in the midst of the last youth crime wave.

In December 1996, Attorney General Janet Reno commented in response to the downturn in juvenile violence that "Demographics do not have to be destiny." She is absolutely correct. While there will definitely be more at-risk teens in the years ahead — especially minority youngsters growing up in conditions of poverty, it is up to all of us to determine if these grim projections eventuate or instead help to encourage a renewed emphasis on prevention.

Table 1: Homicide Victimization Rates per 100,000 Population

Year	Total	Under 14	14-17	18-24	25-34	35-49	50-64	65+	Male	Female	White	Black
1976	8.7	1.8	4.6	14.0	15.6	12.8	7.9	5.5	13.6	4.2	5.2	37.3
1977	8.8	1.9	4.9	14.5	15.7	12.5	7.8	5.1	13.7	4.2	5.4	36.3
1978	9.0	1.9	5.2	14.8	16.3	12.4	7.5	4.9	14.1	4.1	5.6	35.2
1979	9.8	1.8	5.3	16.9	17.8	13.0	7.9	5.4	15.4	4.4	6.1	37.6
1980	10.2	1.9	6.0	17.8	18.8	13.4	8.0	5.4	16.3	4.5	6.5	38.9
1981	9.8	1.9	5.1	16.3	17.8	13.2	8.3	5.0	15.6	4.3	6.2	36.6
1982	9.1	2.0	4.8	15.2	16.0	12.0	7.5	4.9	14.1	4.3	5.9	32.4
1983	8.3	1.8	4.5	14.0	14.8	10.7	6.5	4.4	12.8	3.9	5.3	29.5
1984	7.9	1.8	4.3	13.5	14.1	10.3	6.1	4.1	12.1	3.9	5.3	27.4
1985	8.0	1.8	5.0	13.5	14.2	10.1	6.0	4.1	12.1	4.0	5.3	27.7
1986	8.5	2.0	5.3	15.6	15.5	10.3	5.8	4.3	13.2	4.1	5.4	31.5
1987	8.3	1.8	5.8	15.7	14.9	9.5	5.5	4.4	12.5	4.2	5.2	30.8
1988	8.4	2.1	6.6	16.6	15.5	9.3	5.2	4.3	12.9	4.2	5.0	33.6
1989	8.7	2.1	8.0	18.4	15.7	9.3	5.4	3.8	13.6	4.0	5.0	35.2
1990	9.4	2.0	9.9	21.5	17.0	10.0	5.3	3.7	15.1	4.0	5.5	38.1
1991	9.8	2.1	11.3	24.4	17.0	10.1	5.5	3.6	15.7	4.2	5.6	39.6
1992	9.3	2.0	11.4	23.7	16.4	9.6	5.0	3.5	14.9	4.0	5.3	37.5
1993	9.5	2.2	12.3	24.7	16.3	9.6	5.1	3.5	15.1	4.2	5.3	39.0
1994	9.0	2.1	11.4	24.0	15.7	9.0	4.6	3.1	14.4	3.8	5.0	36.7
1995	8.2	1.9	11.2	21.8	14.1	8.3	4.7	3.0	12.9	3.7	4.8	31.9
1996	7.4	2.0	9.4	19.8	12.4	7.8	4.2	2.7	11.7	3.3	4.4	28.5

Tabulations based on FBI Supplementary Homicide Reports and Census Bureau, Current Population Reports.

Table 2: Estimated Homicide Offending Rates per 100,000 Population

Year	Total	Under 14	14-17	18-24	25-34	35-49	50-64	65+	Male	Female	White	Black
1976	9.5	.2	10.6	22.4	19.4	11.1	5.2	2.3	16.3	3.1	5.1	44.7
1977	9.4	.2	10.0	22.1	18.7	11.4	5.2	2.2	16.2	3.0	5.3	42.3
1978	9.6	.3	10.1	23.1	19.0	11.4	4.9	2.2	16.8	2.8	5.5	42.3
1979	10.5	.2	11.7	26.2	20.3	11.6	5.5	2.2	18.6	2.9	6.0	45.2
1980	11.6	.2	12.9	29.5	22.2	13.3	5.1	2.0	20.6	3.1	6.7	49.9
1981	10.7	.2	11.2	25.7	20.3	12.8	5.2	2.1	18.9	2.9	6.1	44.8
1982	9.9	.2	10.4	24.2	19.0	11.3	4.8	1.8	17.4	2.8	5.8	39.8
1983	9.0	.2	9.4	22.1	17.5	10.2	4.2	1.5	15.8	2.6	5.3	35.6
1984	8.6	.2	8.5	21.5	16.9	9.5	4.0	1.7	15.2	2.3	5.3	32.8
1985	8.5	.2	9.8	21.4	16.0	9.4	4.3	1.6	15.2	2.2	5.1	33.3
1986	9.2	.2	11.7	23.4	17.6	9.9	4.1	1.6	16.5	2.3	5.4	36.8
1987	8.9	.2	12.3	24.1	16.2	9.2	3.9	1.8	16.0	2.2	5.3	35.6
1988	9.3	.2	15.5	26.9	16.5	8.9	3.6	1.7	16.8	2.2	5.0	40.3
1989	9.5	.3	18.1	30.2	16.4	8.4	3.5	1.4	17.4	2.1	5.1	41.9
1990	10.6	.2	23.7	34.4	17.6	9.5	3.5	1.4	19.6	2.2	5.6	46.9
1991	11.2	.3	26.6	40.8	18.6	8.2	3.3	1.3	20.7	2.2	5.7	50.4
1992	10.4	.3	26.3	38.4	16.8	7.7	3.3	1.3	19.3	1.9	5.2	46.8
1993	10.7	.3	30.2	41.3	15.9	7.4	3.5	1.2	19.9	2.0	5.2	49.3
1994	10.2	.3	29.3	39.6	15.2	7.4	2.9	1.0	18.8	1.9	5.0	46.1
1995	9.2	.3	23.6	36.7	14.4	6.7	2.9	1.1	17.2	1.6	4.9	39.1
1996	8.5	.2	19.8	35.8	13.3	6.2	2.6	1.0	15.6	1.7	4.5	35.7

Tabulations based on FBI Supplementary Homicide Reports and Census Bureau, Current Population Reports. Rates include both known perpetrators and estimated share of unidentified perpetrators.

Table 3: Homicide Victimization Rates per 100,000 Population by Age, Sex and Race

Year	14-17				18-24				25+			
	Male		Female		Male		Female		Male		Female	
	White	Black	White	Black	White	Black	White	Black	White	Black	White	Black
1976	3.7	24.6	2.2	6.4	11.5	91.2	4.3	25.4	9.9	98.6	3.1	19.6
1977	4.1	22.7	2.4	8.8	12.7	88.1	4.5	24.8	10.0	95.3	3.2	17.5
1978	4.8	22.2	2.5	7.7	13.5	87.7	4.5	24.0	10.5	91.7	3.1	16.7
1979	5.0	23.6	2.3	7.9	16.3	92.7	5.3	24.4	11.3	97.5	3.2	18.6
1980	5.4	27.5	2.7	7.1	17.0	101.2	5.5	24.6	12.0	99.2	3.5	17.9
1981	4.4	23.6	2.4	6.2	15.3	91.8	5.1	20.8	11.6	95.4	3.3	16.4
1982	4.1	22.7	2.0	7.6	14.1	84.2	5.3	18.0	10.6	81.0	3.4	14.7
1983	3.9	21.7	2.1	5.3	13.0	76.3	4.2	19.7	9.6	71.9	3.2	13.3
1984	3.6	18.8	2.2	6.6	12.2	69.7	5.2	18.7	9.3	66.3	3.0	12.7
1985	4.0	24.2	2.0	7.5	12.3	74.9	4.3	16.9	9.1	63.8	3.3	13.5
1986	4.2	27.4	2.3	6.6	13.6	89.9	4.8	20.2	9.2	71.7	3.2	14.4
1987	3.8	36.9	2.3	7.2	12.6	98.2	4.7	19.9	8.6	65.3	3.3	14.7
1988	4.0	44.1	2.3	7.3	12.5	111.5	4.6	21.2	8.3	70.5	3.1	15.1
1989	5.4	55.2	2.1	8.8	13.7	130.4	4.5	20.3	8.3	71.7	2.9	14.9
1990	7.7	60.7	2.6	10.6	17.2	155.4	4.1	21.1	9.0	76.6	3.0	14.7
1991	8.7	73.6	2.6	9.6	18.7	177.8	4.7	24.0	9.0	74.4	2.9	15.3
1992	9.2	68.6	2.5	13.1	17.7	175.1	4.5	21.2	8.5	68.9	2.9	14.7
1993	9.3	77.9	2.8	12.9	17.5	187.1	4.4	24.6	8.2	69.6	3.1	14.8
1994	8.9	73.2	2.0	10.2	18.2	180.2	3.9	21.2	7.9	65.8	2.7	14.0
1995	8.9	64.7	2.8	12.2	17.7	152.2	4.3	17.5	7.1	57.7	2.8	12.6
1996	8.4	53.3	2.1	8.9	15.7	140.8	3.4	15.8	6.5	51.0	2.5	11.6

Tabulations based on FBI Supplementary Homicide Reports and Census Bureau, Current Population Reports.

Table 4: Estimated Homicide Offending Rates per 100,000 Population by Age, Sex and Race

Year	14-17				18-24				25+			
	Male		Female		Male		Female		Male		Female	
	White	Black	White	Black	White	Black	White	Black	White	Black	White	Black
1976	10.4	72.4	1.3	10.3	21.3	166.4	2.6	30.0	9.4	98.3	1.6	22.3
1977	10.6	66.6	1.3	6.2	21.7	155.4	2.7	29.0	9.8	93.3	1.6	21.2
1978	10.7	64.5	1.2	7.9	23.7	161.2	2.6	26.6	10.0	93.1	1.5	19.3
1979	13.3	70.0	1.2	8.3	26.8	181.5	2.8	27.1	10.8	97.7	1.6	18.6
1980	13.6	85.2	1.1	8.0	30.2	207.9	2.9	30.6	12.1	104.1	1.7	19.2
1981	10.9	73.1	1.3	8.6	26.9	173.1	2.5	24.5	11.4	97.1	1.6	18.1
1982	11.3	61.6	1.2	5.9	24.3	160.2	2.8	25.5	10.9	83.6	1.6	15.8
1983	10.3	50.5	1.6	7.0	23.5	137.7	2.4	23.1	9.7	76.9	1.5	14.2
1984	9.4	47.6	1.2	6.2	24.5	124.2	2.7	19.6	9.8	71.6	1.3	13.1
1985	9.7	62.7	1.0	6.6	22.8	133.7	2.3	18.7	9.7	68.6	1.2	12.9
1986	12.3	72.2	1.1	5.6	24.3	149.9	2.4	20.8	9.9	76.5	1.2	13.2
1987	11.4	81.7	1.4	7.3	23.8	163.0	2.8	17.5	9.7	69.3	1.2	11.6
1988	13.9	111.9	1.0	7.4	23.0	204.0	2.6	22.6	9.1	72.7	1.1	11.5
1989	14.9	141.0	1.0	7.7	25.8	236.9	2.7	19.0	8.8	68.7	1.1	11.7
1990	20.6	175.3	1.5	7.5	30.2	266.7	2.9	20.9	9.3	78.4	1.1	11.0
1991	21.9	199.1	1.3	12.1	32.6	337.5	2.6	23.4	9.4	71.7	1.1	11.2
1992	21.8	195.2	1.4	11.1	31.3	312.0	2.3	19.2	8.2	67.9	1.0	10.1
1993	21.8	244.1	1.5	9.3	31.5	347.6	2.2	21.3	8.0	63.8	1.1	9.4
1994	22.4	226.7	1.4	9.7	31.1	329.8	2.1	20.1	7.7	58.5	1.0	9.6
1995	20.8	165.7	1.4	8.1	31.6	288.1	2.0	15.3	7.5	53.6	0.9	7.2
1996	17.4	134.8	1.7	7.8	31.0	269.1	2.8	17.4	6.6	49.2	0.9	7.1

Tabulations based on FBI Supplementary Homicide Reports and Census Bureau, Current Population Reports. Rates include both known perpetrators and estimated share of unidentified perpetrators.

Table S1: State Homicide Victimization Rates, Ages 14-17

State	1976	1977	1978	1979	1980	1981	1982	1983	1984	1985	1986	1987	1988	1989	1990	1991	1992	1993	1994	1995	1996
AK	3.0	8.7	6.6	10.3	9.5	10.3	21.8	0.0	0.0	0.0	12.1	3.5	3.1	6.9	15.0	3.1	0.0	5.9	11.5	6.1	11.4
AL	4.4	6.2	4.6	4.7	2.9	4.2	4.1	3.4	2.7	3.5	3.6	4.9	2.9	6.5	6.0	8.1	10.6	9.3	13.6	11.2	7.9
AR	6.1	3.0	5.1	3.9	5.8	3.3	2.6	2.0	2.1	2.8	2.7	3.4	6.4	5.6	5.8	10.8	14.6	7.9	8.4	13.7	9.6
AZ	1.9	7.6	5.7	5.0	8.7	5.2	3.7	4.3	7.0	5.8	8.1	4.0	5.9	2.9	7.8	7.5	10.4	11.2	13.5	17.0	9.3
CA	6.0	9.7	9.2	10.6	12.9	10.2	6.9	7.7	7.3	8.4	9.0	9.0	9.2	13.2	17.8	20.4	20.0	20.7	19.1	20.1	14.7
CO	2.0	3.0	6.6	3.8	3.2	4.9	5.2	3.5	4.4	4.2	1.6	0.5	3.7	2.7	5.9	5.1	8.3	8.0	7.4	7.4	5.4
CT	1.5	1.9	1.9	3.0	3.0	6.8	3.8	2.5	2.2	3.6	4.3	7.1	4.4	7.6	11.0	9.5	9.8	8.6	11.8	7.1	6.3
DC	16.1	12.6	6.5	9.0	24.2	7.5	8.0	19.3	14.6	5.8	11.0	34.9	52.6	86.2	112.1	148.3	146.3	137.6	91.5	140.2	...
DE	4.4	2.4	0.0	0.0	0.0	9.7	2.4	0.0	0.0	0.0	0.0	0.0	0.0	0.0	3.1	15.1	4.7	5.0	7.0	7.4	2.8
FL	5.4	5.2	5.4	6.7	7.4	5.4	5.0	4.9	6.3	5.3	6.1	8.1	8.4	8.7	8.1	6.7	4.7
GA	3.9	2.5	4.1	5.5	5.7	6.8	3.5	2.1	2.8	4.6	3.9	5.4	6.3	7.6	7.2	9.7	9.1	11.3	11.1	8.8	9.7
HI	5.9	4.8	1.6	1.6	0.0	3.1	0.0	1.6	1.6	3.3	6.5	5.2	1.6	1.8	0.0	1.8	5.2	3.6	0.0	3.3	3.4
IA	1.5	2.4	2.3	0.5	2.0	1.5	0.0	2.2	1.9	0.0	2.3	2.3	0.6	1.2	1.4	...	1.1	3.4	2.5	1.0	1.1
ID	7.4	1.4	1.5	0.0	1.6	0.0	3.2	6.2	1.6	0.0	3.2	4.4	4.8	0.0	1.5	0.0	1.4	2.8	5.2	2.5	2.3
IL	7.1	7.7	8.2	7.4	7.2	7.3	6.5	9.0	8.1	6.8	8.8	3.0	8.4	11.0	13.7	17.2	20.3	26.4	26.9	21.7	24.1
IN	2.1	3.2	3.1	3.7	5.7	2.9	3.2	2.1	2.5	4.3	4.0	3.7	4.4	5.1	5.2	5.6	7.2	8.6	9.1	11.9	6.7
KS	3.1	1.9	3.1	0.6	1.3	1.3	3.3	4.8	2.8	1.4	2.4	4.6	1.6	2.5	3.3	9.7	5.0	11.2
KY	6.8	4.4	2.6	4.5	5.2	2.2	5.4	4.3	1.7	3.8	2.6	0.0	...	3.1	1.0	2.8	6.0	1.9	3.9	4.7	3.6
LA	5.0	6.2	6.2	5.5	5.4	3.3	8.6	4.7	6.7	5.3	4.6	9.6	9.5	20.9	14.6	17.8	19.5	21.9	17.6	19.2	16.8
MA	2.8	1.3	2.4	3.9	2.8	3.2	2.4	1.7	3.2	2.4	2.9	2.8	3.3	6.3	8.6	6.8	4.9	8.1	6.8	4.4	2.3
MD	4.7	3.9	3.9	5.5	6.7	4.2	5.7	5.1	6.4	6.6	5.6	5.6	12.8	13.1	10.8	13.9	12.3	17.6	12.3	22.6	20.1
ME	1.3	1.2	2.1	1.2	4.8	3.7	1.4	0.0	1.3	1.4	1.4	1.4	0.0	2.7	0.0	0.0	0.0	0.0	0.0
MI	6.9	4.4	7.2	4.4	4.6	4.4	4.6	7.2	4.5	9.7	10.0	14.7	11.8	13.3	12.5	12.0	11.6	13.4	9.5	11.3	7.5
MN	2.5	2.0	1.7	1.2	1.3	1.4	1.4	0.4	0.4	1.7	1.7	0.9	2.5	3.0	2.5	1.9	5.5	3.2	4.1	5.9	4.5
MO	7.4	7.3	5.0	5.3	5.5	5.5	5.4	5.4	3.1	2.9	3.9	4.2	5.8	9.5	6.9	19.0	14.6	23.2	19.8	15.6	10.2
MS	3.3	7.1	6.8	6.9	3.6	2.1	4.2	1.6	2.5	7.9	4.9	3.5	2.6	3.4	7.7	14.4	12.1	8.5	17.9	12.3	8.7
MT	0.0	2.3	1.8	3.5	3.8	2.1	0.0	0.0	4.4	0.0	0.0	...	0.0	2.3	0.0	0.0	2.7
NB	0.9	2.1	1.1	1.9	1.1	3.7	1.0	1.1	3.3	1.1	1.1	7.5	3.4	1.1	4.8	3.3	0.0	0.0	0.0	6.8	4.9
NC	2.4	3.7	3.4	2.4	2.9	2.9	4.6	2.4	4.3	5.1	2.6	3.4	3.7	4.4	8.8	10.3	9.1	11.0	8.6	10.1	6.0
ND	2.1	0.0	0.0	1.9	2.0	0.0	0.0	0.0	0.0	0.0	0.0	2.5	2.5	0.0	0.0	0.0	2.7	2.7	0.0	0.0	0.0
NH	0.0	0.0	1.5	0.0	1.7	0.0	1.7	0.0	0.0	0.0	0.0	5.0	4.6	6.7	1.8	0.0	0.0	2.1	1.9	1.9	1.7
NJ	1.9	3.7	2.5	4.9	5.3	5.2	3.7	3.4	3.1	2.8	4.7	4.3	4.1	4.6	5.5	5.7	7.7	4.7	6.0	5.1	6.5
NM	1.0	1.1	7.3	8.7	2.5	0.0	11.7	1.6	1.8	5.3	13.0	6.5	8.5	2.8	5.0	9.7	3.2	8.4	13.2	15.7	10.8
NV	2.2	2.7	4.8	8.8	14.7	7.2	0.0	3.8	4.1	0.0	4.3	4.0	12.6	9.0	7.8	9.4	14.0	9.9	9.9	10.8	20.5
NY	5.5	6.2	6.8	8.0	10.0	10.3	8.4	7.4	6.6	7.2	5.0	8.7	11.9	12.3	14.8	16.9	15.5	15.4	11.7	9.5	7.5
OH	3.8	3.6	3.0	3.6	4.5	3.1	2.9	12.8	3.4	2.9	3.0	3.9	2.5	2.8	5.5	4.7	6.9	7.5	5.9	6.9	5.7
OK	0.9	5.7	7.1	2.4	4.4	4.3	3.8	7.3	4.2	3.5	4.2	3.1	4.7	3.7	7.8	4.4	6.0	5.9	8.4	3.2	6.7
OR	1.2	2.6	3.6	0.6	1.7	4.3	2.4	3.3	1.3	2.0	3.3	4.7	3.2	2.0	2.0	4.5	3.1	5.8	2.3	6.4	1.8
PA	5.5	4.3	5.7	2.5	3.9	4.5	2.3	3.5	1.5	2.5	4.0	3.3	4.6	6.2	6.2	5.2	8.4	8.5	6.8	7.5	6.9
RI	1.3	1.6	4.5	0.0	3.0	3.0	1.5	3.1	0.0	0.0	0.0	4.6	5.5	1.8	8.7	4.3	2.2	10.5	0.0	6.2	5.9
SC	3.0	4.6	2.6	3.5	3.0	2.7	2.6	1.3	4.1	5.5	6.4	2.8	4.6	3.2	6.5	6.8	5.5	11.0	10.5	5.6	7.4
SD	2.1	2.2	0.0	0.0	3.9	0.0	5.4	0.0	0.0	0.0	3.7	0.0	0.0	0.0	0.0	0.0	0.0	2.8	0.0	0.0	3.1
TN	4.4	2.6	2.9	4.2	4.8	4.9	3.9	1.4	3.1	4.2	4.3	5.1	2.4	3.2	6.3	8.0	7.8	5.0	8.6	12.3	12.4
TX	5.8	6.2	6.9	7.5	7.1	6.4	6.2	6.2	5.4	7.5	5.9	6.0	7.0	7.9	13.1	14.0	14.7	15.2	13.7	11.9	8.8
UT	2.7	2.4	2.9	2.4	4.1	1.0	3.0	2.8	0.9	0.9	0.9	1.7	1.7	0.8	0.0	2.2	3.7	1.8	3.4	2.6	3.8
VA	4.5	2.8	4.1	5.5	1.3	2.6	3.2	2.2	3.3	3.4	4.2	4.8	4.5	6.3	11.8	9.2	8.2	10.2	7.2	7.3	8.7
VT	6.1	0.0	0.0	0.0	0.0	6.6	0.0	0.0	2.5	3.1	3.0	0.0	0.0	0.0	0.0	4.1	8.1	0.0	0.0	0.0	2.1
WA	2.9	1.3	3.9	2.6	2.9	1.9	5.2	2.7	4.3	3.6	5.6	3.6	4.4	3.7	5.2	4.7	6.7	10.2	8.6	9.3	3.7
WI	3.9	2.4	1.6	1.9	0.6	1.3	9.6	1.6	1.6	1.0	2.5	3.1	1.8	4.4	4.5	7.0	8.1	8.0	7.2	5.6	5.4
WV	0.0	1.5	0.7	4.2	5.5	2.3	6.2	1.6	1.6	1.7	1.7	0.8	3.4	1.7	3.7	0.9	1.8	6.5	2.8	4.7	1.9
WY	0.0	8.6	0.0	0.0	3.0	0.0	0.0	3.1	0.0	3.2	3.1	0.0	0.0	0.0	3.5	3.4	0.0	0.0	0.0	3.0	0.0
US	4.5	4.9	5.1	5.2	5.9	5.0	4.8	4.5	4.2	4.9	5.2	5.7	6.5	7.9	9.8	11.1	11.3	12.1	11.2	11.0	9.2

Tabulations based on FBI Supplementary Homicide Reports and Census Bureau, Current Population Reports.

... Not available.

Table S2: Estimated State Homicide Offending Rates, Ages 14-17

State	1976	1977	1978	1979	1980	1981	1982	1983	1984	1985	1986	1987	1988	1989	1990	1991	1992	1993	1994	1995	1996
AK	15.3	6.4	15.0	17.0	9.0	10.7	36.1	6.2	17.1	3.3	6.2	7.8	14.3	8.4	7.7	6.3	12.9	19.9	28.8	10.1	6.4
AL	8.9	10.0	11.1	11.6	7.7	7.8	6.4	7.9	8.4	10.4	11.2	5.5	9.7	16.2	16.2	26.8	14.4	16.8	16.5	9.6	13.8
AR	11.1	12.3	5.8	13.3	13.2	2.2	1.3	6.6	8.7	10.7	7.6	8.6	9.5	11.3	25.7	24.1	28.3	33.9	40.7	30.3	18.8
AZ	5.3	6.8	17.5	7.5	14.0	6.8	9.5	5.6	11.0	7.1	15.7	3.8	11.7	6.7	13.1	10.2	18.1	24.0	34.6	21.7	22.9
CA	16.6	16.2	17.8	21.3	31.2	25.6	18.3	18.1	14.2	15.0	17.7	21.7	24.4	30.3	39.9	40.3	41.3	47.7	39.8	37.9	24.8
CO	7.2	6.5	8.3	5.9	9.6	2.6	4.5	4.4	6.8	8.8	6.7	5.5	8.4	4.4	12.2	17.6	18.3	18.0	12.4	17.5	21.9
CT	1.2	5.8	4.5	1.8	5.9	7.5	9.1	7.3	3.4	7.1	7.2	5.8	16.6	17.9	20.6	17.0	21.3	23.0	26.5	12.8	17.4
DC	27.1	32.2	53.0	12.5	75.8	5.3	25.3	19.0	6.5	9.5	34.8	48.1	35.0	535.1	0.0	412.6	452.1	501.2	352.8	365.6	...
DE	2.4	0.0	9.8	10.4	2.6	6.4	0.0	2.6	0.0	10.9	12.3	15.3	6.3	5.9	9.2	34.3	22.6	18.2	28.1	14.7	3.3
FL	10.5	9.8	11.0	12.2	14.0	12.0	10.3	8.4	10.6	12.8	11.4	16.3	20.6	22.1	18.2	15.8	21.0
GA	12.1	10.4	5.9	13.2	7.4	8.4	6.6	5.3	4.3	9.3	11.6	12.7	12.6	16.4	18.8	23.0	18.1	31.5	28.8	24.9	12.5
HI	12.0	4.9	5.4	6.6	2.3	2.0	0.0	7.5	2.0	2.5	0.0	3.6	10.9	6.0	9.7	6.6	6.1	1.8	6.0	14.6	16.5
IA	1.7	3.8	2.5	2.2	1.8	2.1	1.9	1.2	4.3	2.7	3.7	1.2	0.0	3.5	2.4	...	1.2	10.1	7.4	2.5	5.1
ID	9.1	8.0	6.6	3.9	0.0	1.6	11.0	1.6	3.4	3.5	5.6	0.0	0.0	3.2	1.6	1.9	4.3	4.3	8.2	11.9	2.9
IL	19.1	17.8	16.2	22.8	14.4	21.8	18.2	17.1	13.7	10.5	18.8	15.1	22.1	26.0	35.3	53.1	44.0	60.1	67.8	52.1	50.8
IN	6.5	9.5	6.9	5.6	6.7	5.7	7.8	7.1	5.5	7.5	9.3	2.8	9.9	8.2	12.2	10.5	12.9	12.9	23.7	19.8	15.4
KS	3.8	9.8	3.5	5.8	6.0	4.4	5.1	2.2	4.1	4.9	5.0	6.7	1.7	8.2	11.7	12.1	9.8	28.6
KY	10.9	11.6	8.7	7.7	6.5	4.6	2.9	9.3	3.8	7.5	4.5	6.5	...	4.6	11.8	7.8	4.4	11.0	25.6	11.3	8.9
LA	7.6	12.0	14.3	12.2	12.5	13.3	9.0	9.6	9.8	6.2	14.2	9.4	19.5	29.7	42.1	28.4	37.0	53.3	45.6	43.8	42.4
MA	4.0	4.0	3.8	6.6	6.3	5.2	6.0	3.9	4.1	7.8	5.5	7.7	7.2	10.9	15.9	10.9	15.2	14.6	7.2	8.0	6.9
MD	12.8	12.2	10.0	8.6	13.6	14.7	12.2	12.1	11.0	15.3	10.7	13.1	27.1	20.2	40.8	23.0	54.8	57.5	32.5	39.1	36.5
ME	3.4	6.1	2.2	1.8	0.0	1.3	3.1	1.6	5.5	4.4	1.7	1.4	4.6	1.4	0.0	0.0	2.7	0.0	2.9
MI	17.9	11.2	11.5	10.1	12.4	11.1	6.7	9.0	13.7	17.9	23.1	31.9	21.7	26.2	32.8	31.4	25.4	27.8	26.9	22.0	15.7
MN	1.5	1.6	0.7	2.4	3.3	1.0	1.9	1.0	0.5	1.8	4.0	3.7	8.5	3.3	3.0	9.9	11.2	10.4	12.9	12.9	5.3
MO	14.5	8.0	13.8	10.5	15.4	10.0	13.1	14.3	10.0	6.2	5.8	7.1	10.0	15.6	19.3	34.6	28.6	46.1	35.5	23.1	18.3
MS	10.1	7.5	9.5	11.0	12.2	4.5	8.0	5.9	4.4	7.5	10.2	6.5	6.6	5.5	10.7	33.6	31.1	31.2	40.6	28.6	21.9
MT	0.0	0.0	1.9	1.8	2.1	0.0	0.0	5.7	11.3	0.0	0.0	...	4.9	0.0	0.0	0.0	3.0
NB	1.3	7.4	2.3	8.7	4.6	3.2	1.0	2.3	4.6	4.4	5.5	5.0	10.3	8.2	7.3	5.8	4.7	0.0	0.0	4.8	3.7
NC	10.1	7.6	9.2	7.3	7.1	5.6	6.6	4.7	5.2	7.4	7.0	4.6	7.0	12.1	15.3	20.1	24.4	23.0	28.3	21.1	14.6
ND	0.0	0.0	0.0	1.9	9.2	2.9	0.0	0.0	1.6	0.0	0.0	5.7	0.0	0.0	0.0	0.0	2.7	2.7	0.0	29.0	3.8
NH	14.9	1.7	3.3	0.0	4.2	0.0	0.0	1.6	0.0	0.0	1.8	12.4	4.8	4.3	8.2	2.7	0.0	2.4	0.0	2.2	5.1
NJ	7.9	5.8	6.5	9.3	15.3	12.5	14.8	8.6	5.9	10.9	9.6	9.9	13.4	11.1	14.8	17.8	15.9	18.3	13.2	16.5	12.3
NM	11.3	4.3	5.5	17.6	8.8	0.0	6.7	1.7	4.6	7.9	29.4	10.7	15.8	8.6	11.8	9.5	13.8	7.9	25.8	29.4	24.7
NV	10.3	10.5	10.0	14.0	28.9	18.0	14.4	12.2	16.4	17.5	21.4	6.1	27.1	12.9	25.0	18.8	15.6	15.5	31.9	14.6	44.3
NY	19.2	18.5	14.8	22.2	21.8	26.9	20.6	19.6	14.0	13.3	18.3	21.0	31.0	25.7	49.4	42.1	39.0	43.9	39.6	23.1	23.1
OH	6.7	7.4	7.1	8.2	8.8	5.3	5.3	19.7	3.9	5.3	6.1	5.6	5.0	6.6	10.4	14.7	18.4	18.3	17.3	16.7	15.4
OK	4.7	8.1	5.8	6.4	4.5	8.4	3.4	44.2	6.2	4.0	14.3	9.6	13.3	15.0	15.6	15.3	20.8	24.2	28.1	17.9	18.0
OR	7.2	3.8	3.2	5.7	2.3	6.5	6.0	2.8	5.5	6.9	9.4	11.9	5.2	3.6	5.7	9.8	8.5	11.9	9.6	7.7	8.7
PA	11.9	4.0	7.9	5.5	9.9	9.6	6.0	3.6	3.6	4.4	6.5	6.4	9.2	11.8	12.2	11.5	15.7	16.4	21.1	14.9	13.0
RI	0.0	0.0	0.0	4.6	3.0	1.6	6.1	1.6	0.0	7.1	7.0	0.0	7.7	2.0	10.5	5.5	12.2	28.9	2.2	9.2	4.6
SC	9.3	13.9	6.7	7.3	6.6	7.9	5.5	3.8	4.9	8.9	8.6	10.3	9.9	10.6	16.1	22.4	24.0	28.9	37.1	21.9	20.1
SD	0.0	0.0	0.0	10.3	3.9	3.0	2.9	7.6	0.0	0.0	0.0	3.5	0.0	0.0	3.4	2.6	2.3	3.0	0.0	0.0	6.1
TN	5.7	7.0	5.6	7.2	7.1	6.7	8.3	7.7	8.8	6.6	12.3	13.8	13.3	11.6	19.4	26.8	25.3	25.0	22.0	28.7	25.8
TX	9.1	10.2	15.4	17.1	15.4	15.1	15.3	13.0	13.9	17.1	15.6	15.9	20.2	20.1	31.5	41.9	41.2	43.0	45.4	31.2	23.2
UT	4.7	0.0	3.8	1.6	5.3	2.3	1.7	2.3	4.3	0.0	6.3	3.8	2.5	2.8	4.4	7.0	4.6	4.8	7.3	12.2	8.6
VA	8.4	8.8	7.7	10.5	4.8	4.5	4.1	6.2	6.0	9.4	8.1	6.5	8.2	11.5	24.3	25.8	27.9	24.3	26.3	16.9	18.4
VT	0.0	0.0	0.0	3.6	14.5	6.6	0.0	0.0	0.0	0.0	0.0	0.0	3.6	0.0	0.0	0.0	5.0	7.0	0.0	0.0	4.4
WA	6.2	2.7	2.2	6.9	4.1	7.9	5.6	6.7	2.9	5.6	8.3	5.4	10.9	14.4	8.2	9.7	11.1	16.5	19.7	15.5	15.3
WI	4.9	4.9	3.2	3.1	3.0	2.5	33.6	2.3	5.2	3.9	4.0	5.8	4.4	8.5	13.3	15.7	17.7	20.7	16.4	11.1	12.3
WV	3.6	6.2	2.4	6.3	7.7	7.9	6.9	4.9	6.6	1.7	4.3	4.2	4.8	10.4	8.4	5.3	5.1	9.4	3.9	15.6	8.0
WY	8.2	4.3	0.0	6.5	14.0	3.4	18.0	0.0	10.1	0.0	13.2	0.0	0.0	0.0	3.7	3.4	3.3	12.0	3.1	3.0	3.2
US	10.6	10.0	10.1	11.7	12.9	11.2	10.4	9.4	8.5	9.8	11.7	12.3	15.5	18.1	23.7	26.6	26.3	30.2	29.3	23.6	19.8

Tabulations based on FBI Supplementary Homicide Reports and Census Bureau, Current Population Reports.

Rates include both known perpetrators and estimated share of unidentified perpetrators.

... Not available.

Table S3: State Homicide Victimization Rates, Ages 14-24

State	1976	1977	1978	1979	1980	1981	1982	1983	1984	1985	1986	1987	1988	1989	1990	1991	1992	1993	1994	1995	1996
AK	11.2	9.6	18.3	19.0	12.7	15.5	34.7	14.3	13.6	3.2	16.9	7.3	6.5	9.8	15.8	11.4	11.3	10.6	16.4	11.0	11.5
AL	13.2	13.4	15.1	14.0	11.4	11.0	10.6	9.6	8.8	10.3	9.5	11.3	11.0	13.2	18.4	18.9	15.5	21.1	22.3	18.0	18.4
AR	11.3	7.4	10.9	10.6	11.6	9.2	7.1	7.0	6.0	7.3	10.4	7.7	11.5	12.8	14.4	16.8	21.3	16.9	18.3	20.5	16.1
AZ	8.6	11.0	12.3	10.5	14.5	9.3	10.9	7.5	11.2	10.2	13.7	9.4	9.6	10.6	12.6	14.2	15.8	16.1	22.8	23.2	19.5
CA	14.1	16.6	16.8	20.1	23.0	19.5	16.1	16.0	15.2	16.3	18.5	18.0	17.7	20.4	25.3	29.2	30.1	31.0	28.6	27.4	20.8
CO	6.7	7.9	10.2	8.1	8.5	10.4	6.3	7.8	6.2	8.9	8.9	8.2	6.1	5.8	8.1	10.7	10.6	11.6	11.0	10.5	9.3
CT	4.2	6.1	6.3	5.4	5.9	6.4	7.6	6.9	7.3	6.6	6.4	7.8	11.2	11.1	11.9	13.4	13.1	17.6	21.5	14.4	12.3
DC	28.4	25.8	23.6	25.3	42.6	32.3	30.0	36.2	39.6	28.3	43.1	53.7	112.7	145.2	178.6	218.6	199.3	220.1	154.7	208.5	...
DE	8.2	3.6	7.8	2.4	10.1	10.8	9.6	4.1	3.6	2.6	5.1	5.6	6.2	2.0	8.3	10.2	7.5	11.5	9.6	7.9	3.0
FL	11.1	11.2	13.3	16.4	18.5	17.2	16.1	13.7	13.8	13.2	15.1	17.1	16.3	17.0	17.8	14.4	12.4
GA	11.9	10.7	11.1	17.4	14.7	18.0	10.9	6.7	11.0	11.4	10.5	14.2	15.5	16.7	16.9	20.1	18.4	19.2	19.0	17.7	17.3
HI	4.9	8.0	9.4	10.2	9.6	6.6	5.1	7.3	3.1	4.3	6.3	8.3	2.7	9.5	5.1	8.5	5.1	4.6	3.3	4.4	6.3
IA	3.1	2.7	2.4	3.2	4.3	3.9	3.3	3.8	3.0	2.2	3.0	3.3	1.5	4.0	2.2	...	2.5	4.6	3.1	3.0	2.0
ID	7.9	3.7	3.3	5.2	4.1	6.7	3.4	4.4	2.2	2.4	4.2	6.8	4.4	0.0	4.3	1.4	3.5	2.8	5.0	4.4	5.0
IL	15.3	14.9	15.1	17.3	15.7	16.1	14.4	15.2	10.6	11.1	14.4	13.0	15.1	17.4	21.3	26.1	28.4	30.8	32.9	30.1	32.8
IN	6.1	6.9	8.2	9.7	11.1	9.1	8.5	8.0	7.5	7.1	8.5	7.5	9.5	9.7	8.3	12.1	14.4	13.9	16.2	18.3	12.9
KS	5.9	9.4	6.9	9.5	9.0	6.7	5.8	7.1	5.2	4.5	6.3	6.6	5.7	9.0	6.8	11.8	10.2	21.5
KY	11.0	10.5	11.1	9.3	10.2	8.9	10.7	9.7	6.2	7.1	6.7	6.9	...	7.4	6.7	7.8	7.4	7.9	10.1	9.3	7.3
LA	15.2	18.1	18.5	19.2	15.9	20.4	22.3	20.1	15.3	13.5	15.9	15.8	21.5	27.8	30.9	29.2	38.5	47.1	43.9	38.3	38.2
MA	4.9	3.6	5.1	6.2	4.7	4.3	5.6	4.3	5.4	4.6	5.3	4.2	6.5	8.5	10.1	9.9	8.6	9.6	8.9	8.9	7.9
MD	11.2	9.6	9.7	9.7	13.5	13.8	14.7	11.9	12.8	13.2	13.6	16.0	18.3	24.0	27.6	27.9	30.1	33.7	30.2	31.7	30.8
ME	1.0	2.6	3.1	3.1	3.5	3.1	4.0	2.9	3.3	3.8	1.9	3.9	2.6	1.5	5.6	1.5	1.1	2.3	2.8
MI	14.2	12.0	13.5	11.1	12.7	10.1	9.8	13.3	12.7	16.3	18.3	22.3	18.2	18.9	21.0	23.1	21.9	22.0	21.1	18.3	14.1
MN	3.3	2.9	2.7	3.1	3.9	1.8	3.2	1.3	1.4	2.7	3.3	3.3	3.9	3.3	2.6	5.6	5.7	6.7	8.0	8.6	5.8
MO	14.4	15.6	14.7	16.8	16.9	13.5	13.4	11.5	10.6	11.1	12.7	11.1	11.1	14.9	14.9	24.3	26.4	28.2	25.7	20.0	17.3
MS	12.7	17.8	15.4	16.4	17.7	8.2	13.2	10.1	12.0	12.4	11.0	11.8	8.3	11.0	16.7	20.7	28.1	20.0	27.8	23.1	21.3
MT	1.8	4.4	4.6	6.3	4.7	1.5	0.0	5.5	6.2	7.0	0.0	...	1.8	3.6	0.0	1.0	2.1
NB	3.9	4.9	2.5	4.4	5.8	5.1	3.0	3.2	5.1	3.0	7.2	3.5	6.6	3.8	4.3	5.2	7.1	2.6	0.0	4.3	7.5
NC	9.9	11.1	11.2	10.8	10.6	9.0	9.6	6.8	9.3	8.7	9.2	10.4	8.5	10.7	15.0	20.6	16.4	20.0	19.4	17.4	15.0
ND	1.5	1.3	0.7	2.0	2.1	2.8	0.7	2.2	0.5	1.6	0.0	4.3	2.7	0.0	1.0	2.3	1.0	1.9	0.0	1.0	0.0
NH	4.7	3.1	1.7	1.1	4.1	2.9	3.0	2.7	1.1	2.7	1.1	6.3	2.7	3.4	2.3	5.5	4.1	2.8	0.7	2.9	1.3
NJ	6.7	6.6	7.1	8.5	8.4	9.3	8.3	6.4	7.9	6.8	7.8	6.4	7.9	9.1	8.4	8.5	10.6	10.1	10.5	11.2	10.8
NM	11.5	7.6	10.7	9.3	17.1	27.0	15.1	12.6	10.3	11.9	15.0	14.1	12.6	10.0	13.7	19.7	13.4	17.4	21.2	16.1	19.6
NV	13.0	19.5	17.9	19.1	26.1	20.4	14.7	13.5	15.0	10.2	12.6	9.3	13.3	12.6	13.9	21.7	18.4	20.9	23.0	24.5	25.4
NY	12.7	13.2	12.6	16.6	17.6	24.0	15.3	15.5	14.2	13.7	15.5	17.6	21.9	22.0	29.2	29.3	28.5	28.3	23.7	17.9	14.2
OH	8.8	9.3	8.7	10.7	10.1	9.1	8.0	34.9	7.3	6.7	7.0	5.9	5.9	8.9	10.4	13.5	13.5	13.4	12.6	10.3	9.5
OK	7.5	10.7	10.6	9.8	12.9	10.9	12.5	44.0	10.0	6.7	8.7	8.4	7.1	7.6	12.9	10.9	9.5	12.3	10.9	8.9	10.1
OR	4.6	6.7	5.6	4.4	6.2	6.1	5.7	4.1	5.0	6.5	6.4	6.1	6.0	4.9	6.1	6.4	5.8	8.6	7.8	9.0	6.2
PA	8.4	6.9	8.1	7.2	9.5	8.0	7.5	6.4	5.7	4.5	7.5	8.9	8.4	12.5	12.3	12.0	13.2	17.7	11.9	14.2	14.6
RI	4.8	3.0	5.9	6.0	6.7	5.5	6.0	4.0	5.7	6.5	3.9	4.5	7.8	5.2	6.1	9.2	8.5	9.1	8.8	11.6	6.5
SC	10.3	12.1	9.0	12.5	11.7	7.4	8.3	9.1	8.3	10.0	10.1	10.1	11.2	10.3	12.9	19.5	14.1	19.6	15.7	10.7	13.2
SD	0.8	1.7	1.0	0.9	1.4	1.9	4.6	0.0	0.0	4.6	7.7	3.0	3.2	0.0	2.2	1.0	1.4	3.3	1.9	2.4	2.4
TN	11.8	11.7	10.0	10.6	11.7	10.8	10.0	9.6	8.1	10.0	15.5	13.9	11.5	10.4	15.4	17.8	20.0	18.3	15.7	20.1	18.6
TX	13.3	16.4	18.1	20.8	21.4	21.4	19.8	17.4	15.8	17.2	17.1	15.5	17.0	17.4	22.8	25.9	23.6	22.5	20.8	18.5	14.3
UT	5.4	3.8	3.4	4.6	5.5	3.0	4.7	5.2	4.2	4.4	3.9	3.9	3.2	3.2	3.1	4.1	3.0	2.7	3.8	6.2	5.4
VA	7.9	10.2	9.0	9.1	8.1	8.2	8.1	7.6	8.8	7.7	8.9	10.0	10.4	12.8	17.2	18.5	18.0	16.1	18.5	16.7	15.5
VT	9.2	0.0	1.4	1.3	1.7	2.3	2.8	7.2	0.8	3.2	2.0	3.3	1.0	1.2	2.3	3.9	3.9	5.7	1.1	0.0	3.2
WA	5.7	3.9	5.4	4.7	6.6	5.8	6.3	6.5	6.9	7.5	7.5	8.3	6.3	7.0	7.9	8.0	9.9	10.8	12.0	10.0	8.4
WI	4.3	3.4	3.4	4.0	4.4	3.6	27.7	3.5	3.1	3.6	5.6	4.2	4.7	7.5	9.0	10.7	8.5	9.2	11.1	9.7	8.3
WV	6.1	4.7	5.4	7.5	7.1	5.4	6.3	5.8	6.1	4.0	7.5	4.1	7.5	7.1	6.6	7.7	6.7	8.6	7.0	6.4	5.3
WY	4.6	7.8	3.0	4.9	9.2	3.3	12.6	6.5	0.0	4.8	8.3	1.3	1.4	7.0	9.9	2.7	1.3	0.0	6.0	3.5	6.9
US	10.4	10.9	11.2	12.5	13.4	12.1	11.4	10.6	10.2	10.4	11.8	12.1	12.9	14.6	17.4	19.6	19.2	20.1	19.2	17.7	15.7

Tabulations based on FBI Supplementary Homicide Reports and Census Bureau, Current Population Reports.
 ... Not available.

Table S4: Estimated State Homicide Offending Rates, Ages 14-24

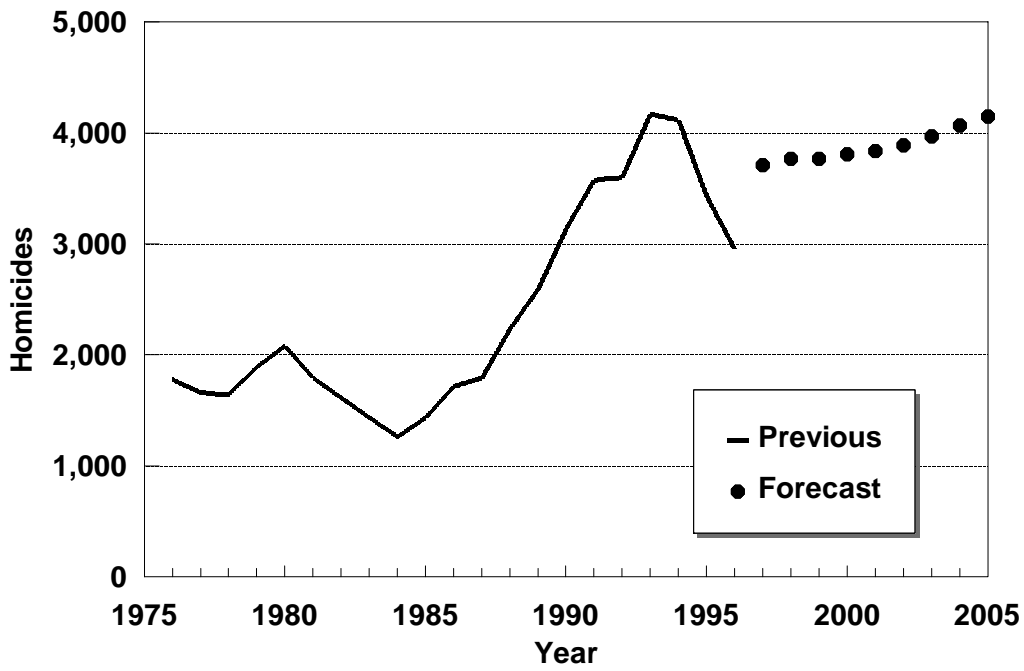
State	1976	1977	1978	1979	1980	1981	1982	1983	1984	1985	1986	1987	1988	1989	1990	1991	1992	1993	1994	1995	1996
AK	14.9	16.1	28.3	17.1	7.8	28.7	37.0	23.6	22.2	17.8	11.5	17.9	13.8	12.7	24.3	18.7	15.5	17.6	15.4	24.9	26.8
AL	21.7	20.4	19.9	18.0	20.4	16.9	16.1	13.0	13.5	17.0	17.1	11.7	20.0	26.0	27.8	39.2	25.8	27.9	31.9	31.8	28.0
AR	20.4	15.2	15.9	13.3	15.6	13.0	13.5	11.5	14.7	18.7	14.4	13.6	19.5	21.5	34.6	32.3	37.0	40.1	47.3	43.6	32.4
AZ	14.7	14.6	21.9	18.5	21.8	12.5	17.4	12.5	16.2	16.1	20.2	14.1	17.3	11.6	19.4	21.4	22.1	29.7	41.5	36.8	31.7
CA	27.3	29.6	29.9	35.3	43.2	34.8	27.7	27.9	26.7	26.3	28.8	29.9	31.5	40.0	47.9	50.0	51.8	55.2	51.6	47.9	40.4
CO	10.9	13.4	12.2	11.2	13.7	10.8	11.6	11.8	13.0	11.8	13.5	12.8	12.2	10.4	12.9	19.7	19.3	17.9	18.0	17.9	19.4
CT	5.9	8.2	9.7	9.6	11.7	12.3	15.5	12.1	8.0	11.6	8.8	13.3	14.7	20.5	16.5	19.5	20.6	24.2	30.2	20.2	24.3
DC	37.6	46.5	67.3	45.6	82.0	48.8	56.6	37.0	46.6	43.7	51.7	82.5	137.9	310.2	6.3	348.5	291.3	328.9	294.7	286.8	...
DE	10.0	7.9	15.6	9.7	12.5	14.0	14.7	5.1	5.2	9.0	19.7	18.5	7.2	7.1	12.9	39.6	23.5	25.2	35.0	15.7	8.4
FL	18.4	18.4	18.1	22.6	30.7	27.8	27.6	21.0	22.4	22.5	25.1	26.8	25.5	26.9	26.7	23.2	35.7
GA	18.1	16.8	18.8	27.7	21.2	21.3	18.4	12.8	12.6	18.1	19.4	21.2	25.4	27.1	30.0	34.0	33.2	41.6	35.7	35.2	29.9
HI	10.1	6.8	18.8	16.8	16.9	7.9	8.2	17.2	4.9	9.1	8.0	14.0	10.1	9.8	7.0	8.5	6.3	7.7	10.9	11.0	12.7
IA	6.8	3.7	4.1	3.9	4.2	4.9	5.0	5.0	5.2	3.6	4.8	6.7	3.2	7.0	4.0	...	3.9	7.9	7.0	6.7	5.9
ID	11.9	12.3	7.8	6.4	4.3	9.8	6.7	7.5	3.7	2.5	7.1	5.6	6.4	4.6	7.5	2.3	6.4	8.0	13.2	15.7	8.8
IL	28.5	24.0	25.2	29.9	26.6	30.7	24.5	26.4	19.7	21.7	25.5	20.9	26.4	32.6	38.7	55.2	50.2	59.0	60.0	60.9	58.1
IN	11.7	11.7	11.1	14.1	21.1	12.1	14.5	11.6	12.1	11.3	13.7	9.8	15.1	14.6	17.4	19.7	20.9	19.7	29.5	28.1	22.5
KS	7.5	11.5	9.7	12.8	14.8	12.8	10.7	11.5	9.4	10.4	11.1	9.3	6.7	14.2	13.7	25.2	17.3	25.9
KY	18.9	18.5	14.9	13.9	18.3	10.9	12.3	16.3	11.7	12.0	11.7	13.4	...	14.1	12.7	12.9	13.2	13.7	26.4	18.6	13.0
LA	20.6	27.3	26.2	31.7	29.3	33.6	26.8	27.2	26.6	18.3	30.4	23.8	31.8	38.4	52.3	59.4	60.6	70.9	72.0	58.0	65.9
MA	7.0	7.3	8.8	8.4	11.3	7.9	7.6	6.8	8.0	9.2	7.7	9.4	10.6	9.4	15.5	16.1	14.1	16.0	14.8	14.9	12.5
MD	21.6	18.2	15.2	17.9	25.2	27.7	26.0	21.6	21.7	21.4	21.4	24.8	28.8	35.7	45.5	44.4	53.7	58.8	48.9	55.9	54.1
ME	6.0	6.3	5.6	4.8	8.0	4.2	5.4	4.6	3.1	6.6	3.1	3.6	7.3	6.1	6.5	1.8	2.8	4.3	5.9
MI	26.2	21.3	22.5	19.5	21.6	19.1	16.0	16.4	21.7	25.1	25.7	36.2	33.0	35.0	42.6	41.4	39.6	43.5	40.5	32.4	26.6
MN	4.5	5.1	3.6	4.4	5.8	3.6	4.4	1.1	2.2	4.4	7.8	6.2	8.9	8.3	5.8	12.1	15.9	12.5	13.6	18.0	11.3
MO	23.8	21.6	22.6	26.2	31.7	19.5	22.2	22.0	17.5	15.3	16.9	14.2	21.3	22.7	27.5	41.1	33.3	51.8	43.8	36.4	29.0
MS	18.6	20.1	18.7	22.3	20.3	18.4	17.9	14.7	14.3	17.4	22.9	17.1	13.8	18.2	27.4	40.0	39.5	43.5	53.2	40.1	37.9
MT	8.0	12.7	4.9	9.3	8.5	7.2	20.2	4.5	8.7	6.1	26.5	...	5.6	13.2	0.0	1.0	10.6
NB	5.0	12.4	5.0	11.5	9.6	6.0	4.1	3.1	8.0	7.3	7.9	5.7	11.6	6.1	7.8	9.0	12.1	11.4	1.4	6.4	8.0
NC	17.0	17.2	17.7	17.3	17.4	13.3	17.9	14.6	11.5	13.3	14.0	15.2	13.7	16.6	25.0	33.6	33.3	39.8	38.5	32.5	30.3
ND	3.4	2.7	2.0	5.4	4.7	3.8	0.9	2.2	2.0	2.1	0.0	3.9	1.0	1.9	1.3	0.0	2.9	4.8	0.0	11.0	5.9
NH	11.2	5.3	1.8	7.6	6.8	3.7	1.3	3.3	0.7	2.7	4.0	12.9	4.4	4.1	5.5	7.1	2.7	4.2	2.0	4.2	4.6
NJ	12.7	10.8	14.4	17.2	22.5	18.5	17.9	13.9	14.3	14.1	13.6	13.0	18.2	16.7	19.8	22.1	22.3	24.3	20.1	22.6	21.0
NM	18.3	12.4	15.9	23.5	25.2	50.7	19.8	21.0	20.5	24.2	24.7	20.7	21.9	16.1	28.9	34.9	18.1	29.3	35.5	33.5	39.9
NV	30.5	32.9	26.7	33.8	50.4	30.2	35.1	20.4	18.6	25.5	30.4	6.9	28.0	16.3	30.7	30.3	34.7	31.9	38.7	30.0	53.2
NY	26.9	25.0	27.6	35.3	38.0	52.4	31.8	30.6	25.6	24.3	29.6	34.1	43.2	41.3	52.4	54.7	54.3	53.3	46.6	31.7	27.8
OH	13.8	12.7	14.8	17.5	15.8	13.3	12.1	55.8	10.4	9.6	10.6	11.2	10.7	15.2	17.0	24.7	25.5	26.8	22.7	22.1	19.9
OK	8.5	14.9	14.7	15.4	17.0	15.1	19.3	86.0	16.2	12.1	20.3	15.8	18.9	16.4	23.0	24.7	22.3	25.3	27.0	23.7	21.9
OR	10.9	7.7	6.4	9.0	6.3	11.1	11.2	7.3	11.8	13.0	13.3	14.0	11.7	9.7	8.8	12.5	14.0	20.4	12.5	12.2	10.7
PA	15.4	10.7	11.7	12.9	17.1	13.9	13.6	10.4	10.0	9.1	11.9	14.3	15.0	21.4	23.2	22.8	24.3	29.4	25.2	28.8	25.4
RI	4.6	8.7	10.2	7.3	8.5	12.9	9.3	3.1	9.4	6.9	8.1	3.3	8.8	12.9	9.4	6.2	16.5	19.5	15.1	12.5	12.8
SC	19.6	19.2	15.6	18.9	15.4	14.5	15.8	15.0	14.3	21.9	15.5	15.3	19.7	21.1	25.1	39.7	38.8	42.1	44.7	30.2	38.9
SD	2.6	3.7	2.2	8.4	2.1	6.2	6.9	6.3	2.5	5.9	5.1	4.9	8.0	4.6	2.5	6.9	1.8	12.6	3.7	6.1	3.7
TN	15.9	15.9	14.5	17.4	17.8	17.7	21.6	18.6	17.5	16.4	23.0	20.3	20.8	23.0	27.8	31.8	31.7	35.8	31.3	35.3	36.4
TX	19.2	22.2	25.6	30.7	33.5	30.3	28.7	27.8	29.9	29.8	28.7	26.9	30.8	29.6	43.7	53.2	45.6	48.4	44.3	34.7	28.6
UT	5.2	4.8	7.6	6.6	8.2	6.4	7.7	5.4	4.3	3.9	5.6	6.9	4.3	4.1	7.9	7.3	6.2	5.6	6.7	12.4	14.5
VA	15.2	15.4	15.4	13.7	15.5	12.3	14.5	13.3	12.1	16.2	14.1	16.7	16.4	20.2	29.7	32.7	34.0	32.9	36.2	29.0	26.8
VT	16.6	2.3	2.8	4.0	8.6	4.5	0.0	7.2	5.3	3.6	3.4	5.8	1.3	3.0	3.5	9.1	11.1	2.3	1.3	0.0	5.0
WA	7.6	6.1	8.1	8.7	11.4	13.2	7.5	10.9	7.8	9.9	12.4	10.2	13.3	12.8	10.4	14.9	19.0	20.0	23.8	15.1	16.8
WI	6.6	6.0	6.0	6.2	6.8	6.4	49.3	5.6	6.5	5.4	7.3	9.6	7.2	11.6	18.9	20.6	19.6	22.2	21.7	19.3	17.2
WV	8.8	9.3	12.1	12.5	13.8	13.3	10.5	9.4	8.0	6.7	13.5	7.8	10.8	16.1	13.9	12.8	10.0	25.7	11.5	15.6	8.8
WY	8.4	9.4	11.0	11.5	19.1	7.1	23.9	11.2	7.2	7.5	15.5	7.9	4.0	11.7	6.0	5.5	10.4	12.8	6.0	4.6	4.1
US	18.0	17.7	18.4	21.0	23.7	20.7	19.4	17.8	17.1	17.4	19.4	20.0	23.0	26.0	30.8	36.0	34.3	37.5	36.0	31.9	29.8

Tabulations based on FBI Supplementary Homicide Reports and Census Bureau, Current Population Reports.

Rates include both known perpetrators and estimated share of unidentified perpetrators.

... Not available.

Forecast of Teen Homicide Offenders



Counts include both known perpetrators and an estimated share of unidentified perpetrators.