



**RAPE  
IN  
ARKANSAS  
1988**

*CR-Sent*

**117580**

Arkansas Crime Information Center

*Arkansas Crime Information Center*

- David Eberdt**  
Director
- Charles Pruitt**  
Deputy Director
- Larry Cockrell**  
Special Services Manager
- Gary Vandersiice**  
System Support Manager

*ACIC Supervisory Board*

- Judge David Hale, Chairman**  
Municipal Judges Association
- Jack Lassiter, Vice Chairman**  
Arkansas Bar Association
- Chief Truman Brewer**  
Chiefs of Police Association
- Will Feland**  
Prosecuting Attorneys Association
- Blake Hendrix**  
Attorney General's Office
- Colonel Tommy Goodwin**  
Arkansas State Police
- David Guntharp**  
Department of Corrections
- Courtney Langston**  
Association of Arkansas Counties
- Chief Justice Jack Holt, Jr.**  
Arkansas Supreme Court
- Senator Knox Nelson**  
General Assembly
- Major Ron Stobaugh**  
Municipal Police Association
- Arch Wylie**  
Citizen-at-large
- Sheriff Jack Yancey**  
Arkansas Sheriff's Association

*Uniform Crime Reporting Staff*

- Lynn Bulloch**  
UCR Supervisor
- Nancy Krablin**  
Statistician & Graphics
- Glenda Smith**  
Quality Control
- Julie Collier**  
Composition
- Letha Osborne**  
DP Section, Programmer
- Berea Stennis**  
DP Section, Data Input

## Introduction

*Rape In Arkansas* is an annual publication. Data in this report comes from the state Uniform Crime Reporting program and a special supplement that allows collection of additional information on each rape and attempted rape. It should be understood that only those incidents that are reported to law enforcement are contained in this publication.

117580

**U.S. Department of Justice  
National Institute of Justice**

This document has been reproduced exactly as received from the person or organization originating it. Points of view or opinions stated in this document are those of the authors and do not necessarily represent the official position or policies of the National Institute of Justice.

Permission to reproduce this ~~copyrighted~~ material has been granted by  
Public Domain/BJS  
U.S. Department of Justice  
to the National Criminal Justice Reference Service (NCJRS).

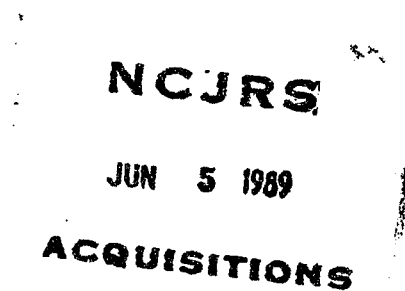
Further reproduction outside of the NCJRS system requires permission of the ~~copyright~~ owner.

All funding of this publication was made possible through cooperative agreement number 87-BJ-CX-K008 from the Bureau of Justice Statistics. Points of view or opinions expressed in this document do not necessarily represent the official position of the U.S. Department of Justice or the Bureau of Justice Statistics.

117580

A Special Services Report

**RAPE IN ARKANSAS  
1988**



May, 1989

**Arkansas Crime Information Center**  
One Capitol Mall  
Little Rock, AR 72201  
501/682-2222

## **Acknowledgement**

We thank all the law enforcement agencies in the state who participated in the Arkansas Uniform Crime Reporting Program during 1988. Without their support and cooperation, this publication and the resulting overview of crime would not be possible.

## **Dedication**

We are aware that numerous rapes occur that are not reported to law enforcement. This report is dedicated to rape victims who had the courage to report these offenses, and to all law enforcement officers endeavoring to uphold the laws and serve the people of Arkansas.

## Definitions of Rape

**The definition of rape in Arkansas, according to Arkansas Code 5-14-103 as amended is:**

*A person commits rape if he engages in sexual intercourse or deviate sexual activity with another person:*

- (a) by forcible compulsion; or*
- (b) who is incapable of consent because he is physically helpless; or*
- (c) who is less than fourteen (14) years of age. It is an affirmative defense to prosecution under this Section that the actor was not more than two (2) years older than the victim. Rape is a class Y felony.*

**The definition of forcible rape in the Uniform Crime Reporting (UCR) Program is:**

*Forcible rape is the carnal knowledge of a female forcibly and against her will. Assaults to commit forcible rape are also included; however, statutory rape (without force) is not counted in this category.*

There is a wide disparity between these two definitions. **This report utilizes the Uniform Crime Reporting definition of rape.** The report includes all data collected, with the cooperation of law enforcement agencies from their offense reports, as reported to the Arkansas Crime Information Center in the UCR Program.

Throughout this report, except where noted, rape and attempted rape are combined for statistical purposes.

## Rape In Arkansas 1988

There were 779 rapes and attempted rapes in Arkansas reported through the Uniform Crime Reporting Program. Of these, 656 were rapes and 123 were attempted rapes reported by law enforcement agencies. This is an increase of 0.6% over 1987.

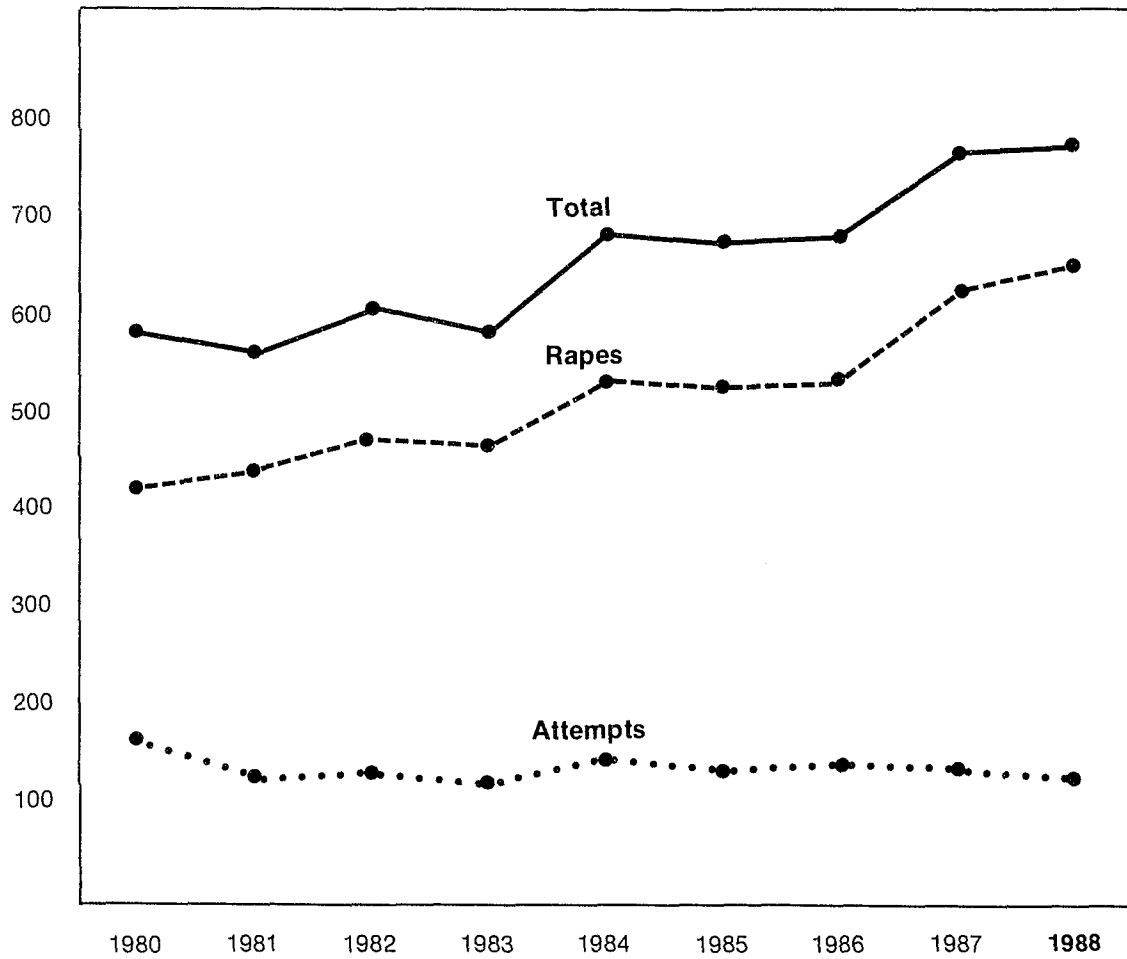
### Rape and Attempted Rape

Rape/Attempted Rape	Number	Percent Distribution
Rape	656	84.2
Attempted Rape	123	15.8
<b>Total</b>	<b>779</b>	<b>100</b>

### Trend

Year	Number of Offenses	Percent Change (Over Previous Year)	Rate Per 100,000	Percent Cleared
1984	692	+18.1	30.0	67.0
1985	681	- 1.6	29.0	66.0
1986	684	+ 0.4	29.2	70.8
1987	774	+13.2	32.8	69.3
<b>1988</b>	<b>779</b>	<b>+ 0.6</b>	<b>32.4</b>	<b>62.9</b>

### Comparison of Rapes and Attempted Rapes 1980 through 1988



## Rape by Time of Day

When time of day was known, 57.3% of all rapes occurred during the 8 hour period, between 8:01 p.m. and 4:00 a.m. The most common time for rapes and attempted rapes occurred between 12:01 a.m. and 2:00 a.m.

Time of Day	Number	Percent Distribution
A.M. 12:01 - 2	122	15.7
2:01 - 4	77	9.9
4:01 - 6	45	5.8
6:01 - 8	15	1.9
8:01 - 10	15	1.9
10:01 - Noon	20	2.6
P.M. 12:01 - 2	32	4.1
2:01 - 4	48	6.2
4:01 - 6	36	4.6
6:01 - 8	46	5.9
8:01 - 10	72	9.2
10:01 - Midnight	75	9.6
Unknown	176	22.6

## Rape by Day of Week

More rapes and attempted rapes were committed on Friday and Saturday.

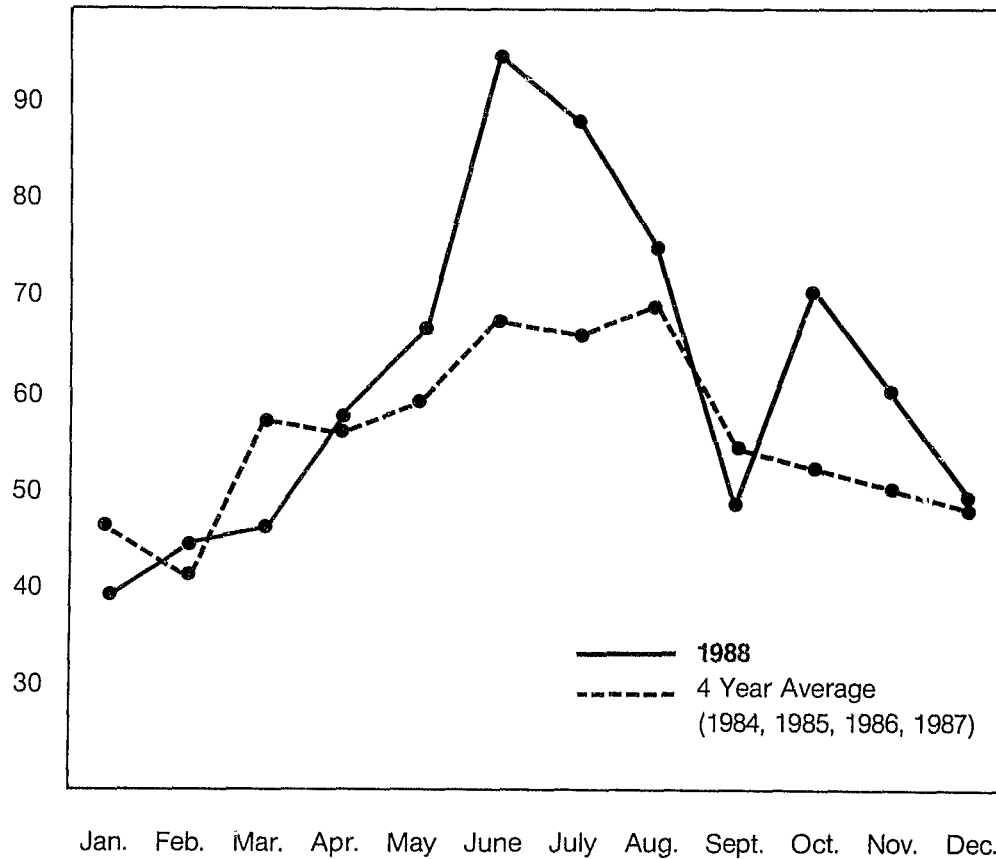
Day of Rape	Number	Percent Distribution
Sunday	109	14.0
Monday	83	10.7
Tuesday	76	9.8
Wednesday	87	11.1
Thursday	80	10.3
Friday	117	15.0
Saturday	120	15.4
Unknown	107	13.7



## Rapes by Month

(1988 compared to an average of the years 1984, 1985, 1986, and 1987)

In 1988, more rapes occurred in June than any other month. From 1984 through 1987, the largest number of rapes occurred during July.



Month	Number	Percent Distribution
January	40	5.1
February	45	5.8
March	47	6.0
April	58	7.5
May	67	8.6
June	95	12.2
July	89	11.4
August	76	9.8
September	49	6.3
October	71	9.1
November	61	7.8
December	50	6.4
Unknown	31	4.0
<b>Total</b>	<b>779</b>	<b>100</b>

## Victims of Rape

The victims of rape in Arkansas were predominantly white (55%) and less than 25 years of age (69%). The youngest victim was six weeks old and the oldest, 90. The victim characteristics by race and age are:

Victim Characteristics	Number	Percent Distribution
<b>Race</b>		
White	429	55.1
Black	345	44.3
Other	2	0.2
Unknown	3	0.4
<b>Age</b>		
5 & Under	41	5.3
6- 9	76	9.8
10-17	249	32.0
18-24	174	22.3
25-34	150	19.3
35-59	65	8.3
60 & Over	15	1.9
Unknown	9	1.1
<b>Total</b>	<b>779</b>	<b>100</b>

## Weapon Used to Exert Force Upon Victim

Where the type of force used was known only 15% of the offenders used an external weapon.

Weapon Used	Number	Percent Distribution
Firearm	43	5.5
Knife/Sharp instrument	54	6.9
Club/Blunt Instrument	15	1.9
Verbal threats, fists, etc.	641	82.3
Unknown	26	3.4

## Victim-Offender Race Relationship

The first race listed is the race of the *victim*, and the second race is that of the *offender(s)*. For example: *white/black* means that the victim was white and the offender was black (1 or more). For offenses in which race is known, 86.5% of the rapes were between members of the same race.

Victim/Offender(s) Race	Number	Percent Distribution
White/White	321	41.2
Black/Black	333	42.8
Total Intra-racial Rapes (same race)	654	84.0
White/Black	87	11.2
White/Other	4	0.5
Black/White	5	0.6
Black/Other	1	0.1
Other/White	3	0.4
White/White & Black*	2	0.3
Total Interracial Rapes (different races)	102	13.1
White/Unknown	12	1.5
Black/Unknown	9	1.2
Unknown/Black	1	0.1
Unknown/White	1	0.1
Total Unknown Rapes	23	2.9
<b>Total Rapes</b>	<b>779</b>	<b>100</b>

\*Rapes involving both white and black offenders are counted as interracial.

## Relationship of Offender to Victim

Seventy-one percent of all rapes were committed by persons known to the victim.

Relationship	Number	Percent Distribution
Known to victim	425	54.6
Unknown to victim	213	27.3
Family member	132	17.0
Unknown (data not available)	9	1.1

## Rapes Involving Family Members

Where the offender was known to the victim 24% of the rapes involved family members.

Relationship	Number	Percent Distribution
Husband	15	11.4
Father	25	18.9
Stepfather	40	30.3
Grandfather	5	3.8
Stepgrandfather	1	0.8
Brother	7	5.3
Half-brother	2	1.5
Stepbrother	3	2.2
Uncle	16	12.1
Great Uncle	1	0.8
Cousin	7	5.3
Nephew	1	0.8
Brother-in-law	4	3.0
Son-in-law	1	0.8
Stepson	1	0.8
Unknown	3	2.2
<b>Total</b>	<b>132</b>	<b>100</b>

## Location of Actual Rapes and Attempted Rapes

In 1988, 43% of all rapes occurred in the victim's residence.

Location of Rape	Number	Percent Distribution
Victim's residence	335	43.0
Suspect's residence	110	14.1
Other residences	46	5.9
Automobiles	50	6.4
Public outdoor areas (streets, parks, etc.)	101	13.0
Fields, vacant lots, etc.	56	7.2
Motels/Hotels	17	2.2
Bar or Lounge	1	0.1
Place of Employment	5	0.7
All other locations	38	4.9
Unknown	20	2.6

## Rape Reporting Time Lapse

Where time lapse was known 53% of the rapes were reported to law enforcement agencies within four hours of the commission of the offense.

Hours Reporting Time	Number	Percent Distribution
Less than 1	227	29.1
1 - 4	155	19.9
4+ - 8	56	7.2
8+ - 12	27	3.5
12+ - 24	45	5.8
More than 24	205	26.3
Unknown	64	8.2

## Number of Offenders Per Rape

There were two or more offenders in only 9% of the rapes or attempted rapes.

Offender(s) Per Offense	Number	Percent Distribution
One	698	89.6
Two	44	5.6
Three	20	2.6
Four	2	0.3
More than four	7	0.9
Unknown	8	1.0

## Rape Offenders (Suspects)

Where the age of the offender was known, 50% were between the ages of 20 and 30 years.

Age of Offender	White	Black	Unknown	Total
Under 20	37 (4.1%)	102 (11.3%)	0	139 (15.5%)
20 - 30	141 (15.7%)	247 (27.5%)	0	388 (43.1%)
Over 30	152 (16.9%)	104 (11.6%)	0	256 (28.5%)
Unknown	28 (3.1%)	67 (7.5%)	21 (2.3%)	116 (12.9%)
<b>Total</b>	<b>358 (39.8%)</b>	<b>520 (57.9%)</b>	<b>21 (2.3%)</b>	<b>899 (100%)</b>

## Medical Attention for Victims

Of the 656 victims of actual rape, 463 (71%) received a medical exam.\*

Type of Rape	Medical/Legal Examination			Total
	Received Exam	No Exam	Unknown	
Actual	463 (59.4%)	103 (13.2%)	90 (11.6%)	656 (84.2%)
Attempt	11 (1.4%)	99 (12.7%)	13 (1.7%)	123 (15.8%)
<b>Total</b>	<b>474 (60.8%)</b>	<b>202 (25.9%)</b>	<b>103 (13.3%)</b>	<b>779 (100%)</b>

\*This examination is performed on a victim by a physician to examine all areas of the body in order to collect evidence for further examination and possible use in prosecution, and to give treatment as needed. Presently the expense of the medical/legal examination is paid by the state and not by the victim.

## Number of Rapes and Attempted Rapes

\*(By Reporting Agency)

Agency	Rapes	Attempted	Agency	Rapes	Attempted
<b>ARKANSAS COUNTY</b>	<b>2</b>	<b>0</b>	<b>CROSS COUNTY</b>	<b>4</b>	<b>1</b>
Stuttgart	2	0	Sheriff	3	0
			Wynne	1	1
<b>ASHLEY COUNTY</b>	<b>3</b>	<b>3</b>	<b>DESHA COUNTY</b>	<b>3</b>	<b>1</b>
Sheriff	2	2	Sheriff	1	0
Crossett	1	1	Dumas	2	1
<b>BAXTER COUNTY</b>	<b>1</b>	<b>0</b>	<b>DREW COUNTY</b>	<b>3</b>	<b>0</b>
Sheriff	1	0	Monticello	3	0
<b>BENTON COUNTY</b>	<b>8</b>	<b>1</b>	<b>FAULKNER COUNTY</b>	<b>6</b>	<b>1</b>
Sheriff	3	1	Sheriff	2	0
Rogers	5	0	Conway	4	1
<b>CARROLL COUNTY</b>	<b>7</b>	<b>2</b>	<b>FRANKLIN COUNTY</b>	<b>1</b>	<b>0</b>
Sheriff	7	2	Sheriff	1	0
<b>CHICOT COUNTY</b>	<b>3</b>	<b>0</b>	<b>FULTON COUNTY</b>	<b>3</b>	<b>0</b>
Sheriff	2	0	Sheriff	3	0
Dermott	1	0	<b>GARLAND COUNTY</b>	<b>35</b>	<b>7</b>
<b>CLARK COUNTY</b>	<b>1</b>	<b>0</b>	Sheriff	10	0
Arkadelphia	1	0	Hot Springs	25	7
<b>CLAY COUNTY</b>	<b>2</b>	<b>1</b>	<b>GRANT COUNTY</b>	<b>2</b>	<b>0</b>
Corning	2	1	Sheriff	2	0
<b>CLEVELAND COUNTY</b>	<b>1</b>	<b>0</b>	<b>GREENE COUNTY</b>	<b>7</b>	<b>0</b>
Sheriff	1	0	Sheriff	4	0
<b>COLUMBIA COUNTY</b>	<b>7</b>	<b>2</b>	Paragould	3	0
Sheriff	7	2	<b>HEMPSTEAD COUNTY</b>	<b>5</b>	<b>1</b>
<b>CONWAY COUNTY</b>	<b>4</b>	<b>0</b>	Hope	5	1
Sheriff	4	0	<b>HOT SPRING COUNTY</b>	<b>4</b>	<b>0</b>
<b>CRAIGHEAD COUNTY</b>	<b>10</b>	<b>2</b>	Malvern	4	0
Sheriff	1	0	<b>HOWARD COUNTY</b>	<b>4</b>	<b>0</b>
Jonesboro	9	2	Sheriff	3	0
<b>CRAWFORD COUNTY</b>	<b>9</b>	<b>0</b>	Nashville	1	0
Sheriff	6	0	<b>INDEPENDENCE COUNTY</b>	<b>4</b>	<b>0</b>
Alma	2	0	Sheriff	4	0
Van Buren	1	0	<b>IZARD COUNTY</b>	<b>1</b>	<b>0</b>
<b>CRITTENDEN COUNTY</b>	<b>38</b>	<b>2</b>	Sheriff	1	0
Sheriff	10	0	<b>JACKSON COUNTY</b>	<b>1</b>	<b>1</b>
West Memphis	28	2	Newport	1	1

## Number of Rapes and Attempted Rapes

Agency	Rapes	Attempted	Agency	Rapes	Attempted
<b>JEFFERSON COUNTY</b>	<b>48</b>	<b>8</b>	<b>POPE COUNTY</b>	<b>8</b>	<b>3</b>
Sheriff	10	3	Sheriff	3	0
Pine Bluff	38	5	Russellville	5	3
<b>LAFAYETTE COUNTY</b>	<b>1</b>	<b>0</b>	<b>PULASKI COUNTY</b>	<b>237</b>	<b>62</b>
Sheriff	1	0	Sheriff	26	11
<b>LEE COUNTY</b>	<b>4</b>	<b>0</b>	Jacksonville	9	2
Sheriff	1	0	Little Rock	149	43
Marianna	3	0	North Little Rock	51	6
<b>LITTLE RIVER COUNTY</b>	<b>1</b>	<b>0</b>	Sherwood	2	0
Sheriff	1	0	<b>RANDOLPH COUNTY</b>	<b>6</b>	<b>0</b>
<b>LONOKE COUNTY</b>	<b>2</b>	<b>1</b>	Sheriff	6	0
Sheriff	1	1	<b>ST. FRANCIS COUNTY</b>	<b>14</b>	<b>3</b>
Lonoke	1	0	Sheriff	7	0
<b>MADISON COUNTY</b>	<b>4</b>	<b>0</b>	Forrest City	7	3
Sheriff	4	0	<b>SALINE COUNTY</b>	<b>4</b>	<b>0</b>
<b>MILLER COUNTY</b>	<b>15</b>	<b>7</b>	Sheriff	4	0
Sheriff	3	3	<b>SEBASTIAN COUNTY</b>	<b>54</b>	<b>0</b>
Texarkana	12	4	Sheriff	3	0
<b>MISSISSIPPI COUNTY</b>	<b>25</b>	<b>3</b>	Fort Smith	50	0
Sheriff	9	1	Greenwood	1	0
Blytheville	7	0	<b>SHARP COUNTY</b>	<b>5</b>	<b>0</b>
Osceola	9	2	Sheriff	5	0
<b>MONROE COUNTY</b>	<b>1</b>	<b>1</b>	<b>UNION COUNTY</b>	<b>11</b>	<b>1</b>
Sheriff	1	0	Sheriff	2	0
Brinkley	0	1	El Dorado	9	1
<b>MONTGOMERY COUNTY</b>	<b>1</b>	<b>0</b>	<b>VAN BUREN COUNTY</b>	<b>1</b>	<b>0</b>
Sheriff	1	0	Sheriff	1	0
<b>NEVADA COUNTY</b>	<b>3</b>	<b>0</b>	<b>WASHINGTON COUNTY</b>	<b>11</b>	<b>6</b>
Sheriff	3	0	Sheriff	1	1
<b>OUACHITA COUNTY</b>	<b>10</b>	<b>0</b>	Fayetteville	5	5
Sheriff	2	0	Springdale	5	0
Camden	8	0	<b>WHITE COUNTY</b>	<b>3</b>	<b>2</b>
<b>PERRY COUNTY</b>	<b>1</b>	<b>0</b>	Sheriff	2	1
Sheriff	1	0	Searcy	1	1
<b>POINSETT COUNTY</b>	<b>3</b>	<b>0</b>	<b>WOODRUFF COUNTY</b>	<b>1</b>	<b>0</b>
Marked Tree	3	0	Sheriff	1	0
<b>POLK COUNTY</b>	<b>1</b>	<b>0</b>	<b>YELL COUNTY</b>	<b>2</b>	<b>1</b>
Mena	1	0	Dardanella	2	1
			<b>STATE TOTAL</b>	<b>656</b>	<b>123</b>

\*Agencies reporting no rapes are not listed.



### ACIC Agent Staff Areas

