

RAPE
IN
ARKANSAS
1987

112246

Arkansas Crime Information Center

Arkansas Crime Information Center

David Eberdt
Director
Charles Pruitt
Deputy Director
Larry Cockrell
Special Services Manager
Gary Vanderslice
System Support Manager

ACIC Supervisory Board

Judge David Hale, Chairman
Municipal Judges Association
Jack Lassiter, Vice Chairman
Arkansas Bar Association
Chief Truman Brewer
Chiefs of Police Association
Will Feland
Prosecuting Attorneys Association
Blake Hendrix
Attorney General's Office
Colonel Tommy Goodwin
Arkansas State Police
David Guntharp
Department of Corrections
Courtney Langston
Association of Arkansas Counties
Chief Justice Jack Holt, Jr.
Arkansas Supreme Court
Senator Knox Nelson
General Assembly
Major Ron Stobaugh
Municipal Police Association
Arch Wylie
Citizen-at-large
Sheriff Jack Yancey
Arkansas Sheriff's Association

Uniform Crime Reporting Staff

Lynn Bulloch
UCR Supervisor
Nancy Krablin
Statistician & Graphics
Glenda Smith
Quality Control
Julie Collier
Composition

Letha Osborne
DP Section, Programmer
Karen Headrick
DP Section, Data Input

112246

**U.S. Department of Justice
National Institute of Justice**

This document has been reproduced exactly as received from the person or organization originating it. Points of view or opinions stated in this document are those of the authors and do not necessarily represent the official position or policies of the National Institute of Justice.

Permission to reproduce this copyrighted material has been granted by

Arkansas Crime Information
Center

to the National Criminal Justice Reference Service (NCJRS).

Further reproduction outside of the NCJRS system requires permission of the copyright owner.

Funding of this publication was made possible through cooperative agreement number 87-BJ-CX-K008 from the Bureau of Justice Statistics. Points of view or opinions expressed in this document do not necessarily represent the official position of the U.S. Department of Justice or the Bureau of Justice Statistics.

112246

A Special Services Report

**RAPE IN ARKANSAS
1987**

NCJRS

JUL 14 1988

ACQUISITIONS

May, 1988

**Arkansas Crime Information Center
One Capitol Mall
Little Rock, AR 72201
501/682-2222**

Acknowledgement

We thank all the law enforcement agencies in the state who participated in the Arkansas Uniform Crime Reporting Program during 1987. Without their support and cooperation, this publication and the resulting overview of crime would not be possible.

Dedication

This report is dedicated to all law enforcement officers endeavoring to uphold the laws and serve the people of Arkansas.

Definitions of Rape

The definition of rape in Arkansas, according to Arkansas Statute 41-1803 as amended is:

A person commits rape if he engages in sexual intercourse or deviate sexual activity with another person:

- (a) by forcible compulsion; or*
- (b) who is incapable of consent because he is physically helpless; or*
- (c) who is less than fourteen (14) years of age. It is an affirmative defense to prosecution under this Section that the actor was not more than two (2) years older than the victim. Rape is a class Y felony.*

The definition of forcible rape in the Uniform Crime Reporting (UCR) Program is:

Forcible rape is the carnal knowledge of a female forcibly and against her will. Assaults to commit forcible rape are also included; however, statutory rape (without force) is not counted in this category.

There is a wide disparity between these two definitions. **This report utilizes the Uniform Crime Reporting definition of rape.** The report includes all data collected, with the cooperation of law enforcement agencies from their offense reports, as reported to the Arkansas Crime Information Center in the UCR Program.

Throughout this report, except where noted, rape and attempted rape are combined for statistical purposes.

Rape in Arkansas 1987

There were 774 rapes and attempted rapes in Arkansas reported through the Uniform Crime Reporting Program. Of these, 626 were rapes and 148 were attempted rapes reported by law enforcement agencies. This is an increase of 13.1% over 1986.

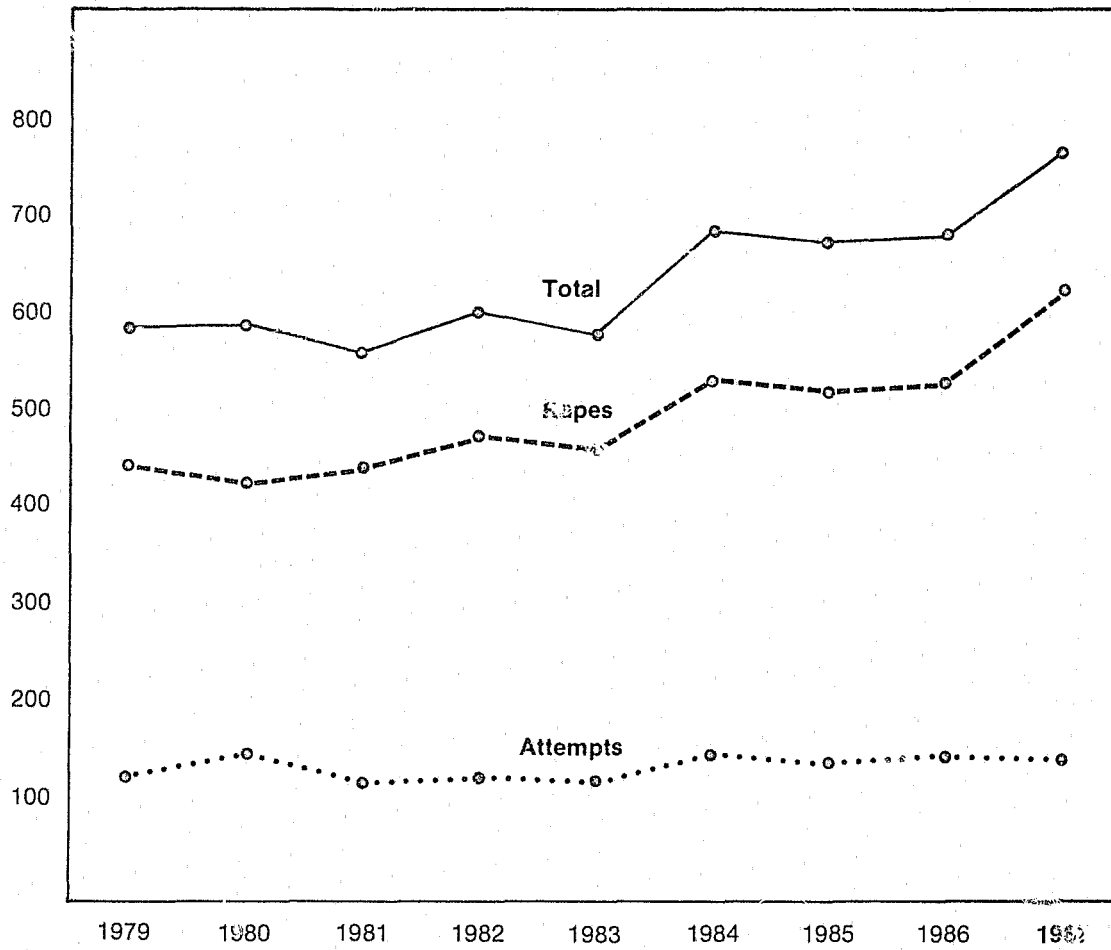
Rape and Attempted Rape

Rape/Attempted Rape	Number	Percent Distribution
Rape	626	80.9
Attempted Rape	148	19.1
Total	774	100

Trend

Year	Number of Offenses	Percent Change (Over Previous Year)	Rate Per 100,000	Percent Cleared
1983	586	- 5.2	25.7	63.5
1984	692	+18.1	30.0	67.0
1985	681	- 1.6	29.0	66.0
1986	684	+ 0.4	29.2	70.8
1987	774	+13.2	32.8	69.3

Comparison of Rapes and Attempted Rapes 1979 through 1987



Rape by Time of Day

When time of day was known, 51.5% of all rapes occurred during the 8 hour period, between 8:01 p.m. and 4:00 a.m. The most common time for rapes and attempted rapes occurred between 12:01 a.m. and 2:00 a.m.

Time of Day	Number	Percent Distribution
A.M. 12:01 - 2	91	11.8
2:01 - 4	82	10.6
4:01 - 6	47	6.1
6:01 - 8	30	3.9
8:01 - 10	26	3.3
10:01 - Noon	26	3.3
P.M. 12:01 - 2	40	5.2
2:01 - 4	39	5.0
4:01 - 6	41	5.3
6:01 - 8	63	8.1
8:01 - 10	73	9.4
10:01 - Midnight	85	11.1
Unknown	131	16.9

Rape by Day of Week

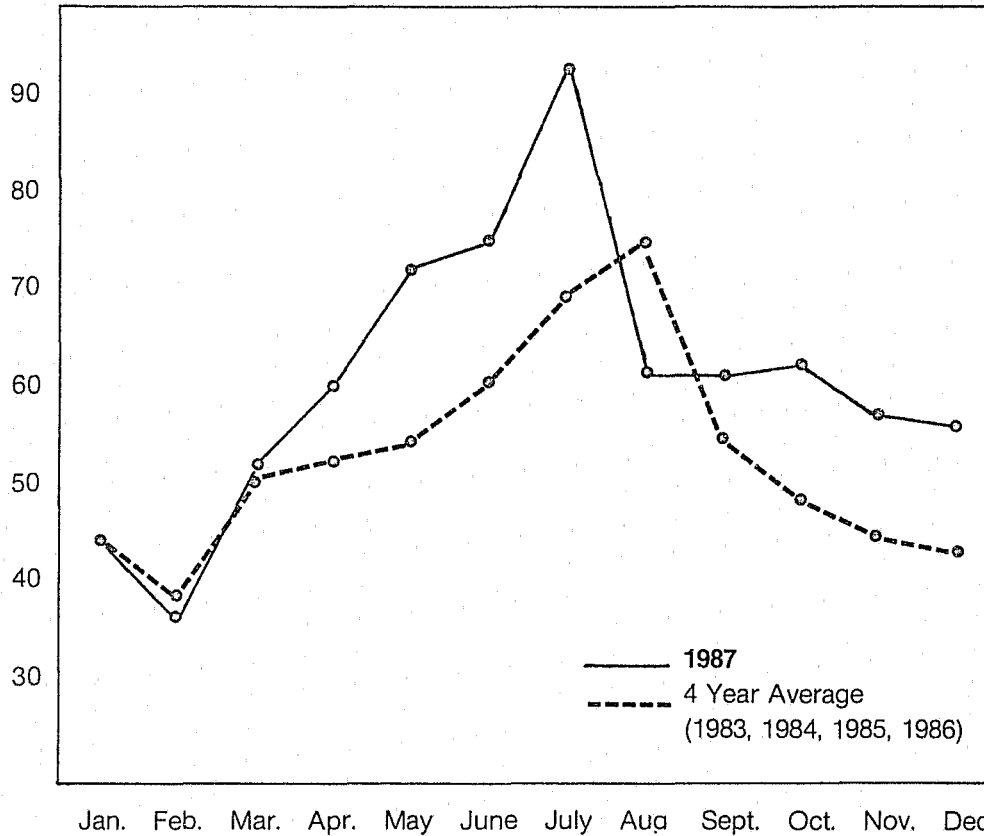
More rapes and attempted rapes were committed on Friday and Saturday.

Day of Rape	Number	Percent Distribution
Sunday	105	13.6
Monday	92	12.0
Tuesday	77	9.9
Wednesday	101	13.0
Thursday	94	12.1
Friday	114	14.7
Saturday	116	15.0
Unknown	75	9.7

Rapes by Month

(1987 compared to an average of the years 1983, 1984, 1985, and 1986)

In 1987, more rapes occurred in July than any other month. From 1983 through 1986, the largest number of rapes occurred during July and August.



Month	Number	Percent Distribution
January	45	5.8
February	37	4.8
March	53	6.9
April	61	7.9
May	73	9.4
June	76	9.8
July	94	12.1
August	62	8.0
September	62	8.0
October	63	8.1
November	58	7.5
December	57	7.4
Unknown	33	4.3
Total	774	100

Victims of Rape, 1987

The victims of rape in Arkansas were predominantly white (58.5%) and less than 25 years of age (70%). The youngest victim was one year old and the oldest, 87. The victim characteristics by race and age are:

Victim Characteristics	Number	Percent Distribution
Race		
White	454	58.5
Black	317	41.1
Unknown	3	0.4
Age		
5 & Under	28	3.6
6- 9	51	6.6
10-17	270	34.9
18-24	192	24.8
25-34	137	17.7
35-59	67	8.7
60 & Over	19	2.4
Unknown	10	1.3
Total	774	100

Weapon Used to Exert Force Upon Victim

Where the type of force used was known only 20% of the offenders used an external weapon.

Weapon Used	Number	Percent Distribution
Firearm	66	8.5
Knife/Sharp instrument	70	9.0
Club/Blunt Instrument	13	1.7
Verbal threats, fists, etc.	597	77.2
Unknown	28	3.6

Victim-Offender Race Relationship

The first race listed is the race of the *victim*, and the second race is that of the *offender(s)*. For example: *white/black* means that the victim was white and the offender was black (1 or more). For offenses in which race is known, 83% of the rapes were between members of the same race.

Victim/Offender(s) Race	Number	Percent Distribution
White/White	334	43.1
Black/Black	290	37.5
Total Intraracial Rapes (same race)	624	80.6
White/Black	117	15.1
White/Other	4	0.5
Black/White	6	0.8
Black/White & Black*	3	0.4
Total Interracial Rapes (different races)	130	16.8
White/Unknown	7	0.9
Black/Unknown	11	1.4
Unknown/Unknown	2	0.3
Total Unknown Rapes	20	2.6
Total Rapes	774	100

*Rapes involving both white and black offenders are counted as interracial.

Relationship of Offender to Victim

Sixty-five percent of all rapes were committed by persons known to the victim.

Relationship	Number	Percent Distribution
Known to victim	376	48.6
Unknown to victim	259	33.5
Family member	130	16.8
Unknown (data not available)	9	1.1

Rapes Involving Family Members

Where the offender was known to the victim 26% of the rapes involved family members.

Relationship	Number	Percent Distribution
Husband	8	6.1
Father	37	28.4
Stepfather	36	27.7
Grandfather	1	0.8
Stepgrandfather	1	0.8
Brother	1	0.8
Uncle	14	10.8
Cousin	14	10.8
Brother-in-law	10	7.7
Half-brother	1	0.8
Stepbrother	2	1.5
Unknown	5	3.8

Location of Actual Rapes and Attempted Rapes

In 1987 45% of all rapes occurred in the victim's residence.

Location of Rape	Number	Percent Distribution
Victim's residence	350	45.2
Suspect's residence	90	11.6
Other residences	46	5.9
Daycare	2	0.3
Automobiles	38	4.9
Public outdoor areas (streets, parks, etc.)	103	13.3
Fields, vacant lots, etc.	66	8.5
Motels/Hotels	20	2.6
Bar or Lounge	1	0.1
All other locations	36	4.7
Unknown	22	2.9

Rape Reporting Time Lapse

Where time lapse was known 55% of the rapes were reported to law enforcement agencies within four hours of the commission of the offense.

Hours Reporting Time	Number	Percent Distribution
Less than 1	256	33.1
1 - 4	134	17.3
4+ - 8	60	7.8
8+ - 12	30	3.9
12+ - 24	59	7.6
More than 24	162	20.9
Unknown	73	9.4

Number of Offenders Per Rape

There were two or more offenders in only 12% of the rapes or attempted rapes.

Offender(s) Per Offense	Number	Percent Distribution
One	675	87.2
Two	64	8.3
Three	19	2.4
Four	6	0.8
More than four	3	0.4
Unknown	7	0.9

Rape Offenders (Suspects)

Where the age of the offender was known, 53% were between the ages of 20 and 30 years.

Age of Offender	White	Black	Unknown	Total
Under 20	54 (6.0%)	104 (11.5%)	1 (0.1%)	159 (17.6%)
20 - 30	168 (18.5%)	248 (27.4%)	1 (0.1%)	417 (46.0%)
Over 30	125 (13.8%)	89 (9.8%)	1 (0.1%)	215 (23.7%)
Unknown	19 (2.1%)	77 (8.5%)	19 (2.1%)	115 (12.7%)
Total	366 (40.4%)	518 (57.2%)	22 (2.4%)	906 (100%)

Medical Attention for Victims

Of the 626 victims of actual rape, 461 (74%) received a medical exam.*

Type of Rape	Medical/Legal Examination			
	Received Exam	No Exam	Unknown	Total
Actual	461 (59.5%)	74 (9.6%)	91 (11.8%)	626 (80.9%)
Attempt	20 (2.6%)	114 (14.7%)	14 (1.8%)	148 (19.1%)
Total	481 (62.1%)	188 (24.3%)	105 (13.6%)	774 (100%)

*This examination is performed on a victim by a physician to examine all areas of the body in order to collect evidence for further examination and possible use in prosecution, and to give treatment as needed. Presently the expense of the medical/legal examination is paid by the state and not by the victim.

Number of Rapes and Attempted Rapes
 *(By Reporting Agency)

Agency	Rapes	Attempted	Agency	Rapes	Attempted
ARKANSAS COUNTY	1	1	FAULKNER COUNTY	12	4
Stuttgart	1	1	Sheriff	4	1
			Conway	8	3
ASHLEY COUNTY	6	0	FULTON COUNTY	1	0
Sheriff	3	0	Sheriff	1	0
Hamburg	3	0			
BAXTER COUNTY	1	0	GARLAND COUNTY	21	10
Sheriff	1	0	Sheriff	1	0
			Hot Springs	20	10
BENTON COUNTY	6	2	GREENE COUNTY	5	1
Sheriff	3	1	Sheriff	2	0
Rogers	3	1	Paragould	3	1
BOONE COUNTY	3	0	HEMPSTEAD COUNTY	1	0
Sheriff	3	0	Hope	1	0
CARROLL COUNTY	11	0	HOT SPRING COUNTY	4	1
Sheriff	11	0	Sheriff	1	0
			Malvern	3	1
CHICOT COUNTY	2	0	INDEPENDENCE COUNTY	1	0
Dermott	2	0	Sheriff	1	0
CLAY COUNTY	2	1	JEFFERSON COUNTY	50	11
Corning	2	1	Sheriff	10	0
			Pine Bluff	40	11
COLUMBIA COUNTY	9	3	JOHNSON COUNTY	1	0
Sheriff	9	3	Sheriff	1	0
CONWAY COUNTY	3	0	LAWRENCE COUNTY	1	0
Sheriff	2	0	Sheriff	1	0
Morrilton	1	0			
CRAIGHEAD COUNTY	3	2	LEE COUNTY	2	2
Jonesboro	3	2	Sheriff	1	0
			Marianna	1	2
CRAWFORD COUNTY	6	0	LITTLE RIVER COUNTY	2	0
Sheriff	3	0	Sheriff	1	0
Van Buren	3	0	Ashdown	1	0
CRITTENDEN COUNTY	33	3	LONOKE COUNTY	7	1
Sheriff	4	1	Sheriff	6	1
West Memphis	29	2	Cabot	1	0
CROSS COUNTY	2	0	MADISON COUNTY	3	0
Sheriff	1	0	Sheriff	3	0
Wynne	1	0			
DALLAS COUNTY	1	1			
Fordyce	1	1			

Number of Rapes and Attempted Rapes

Agency	Rapes	Attempted	Agency	Rapes	Attempted
MARION COUNTY	2	0	PULASKI COUNTY	229	70
Sheriff	2	0	Sheriff	19	2
			Jacksonville	12	3
MILLER COUNTY	21	3	Little Rock	155	56
Sheriff	3	0	North Little Rock	42	9
Texarkana	18	3	Maumelle	1	0
MISSISSIPPI COUNTY	21	9	RANDOLPH COUNTY	3	0
Sheriff	5	2	Sheriff	1	0
Blytheville	8	3	Pocahontas	2	0
Osceola	8	4			
MONROE COUNTY	4	0	ST. FRANCIS COUNTY	14	5
Sheriff	2	0	Sheriff	8	1
Brinkley	2	0	Forrest City	6	4
MONTGOMERY COUNTY	2	0	SALINE COUNTY	9	1
Sheriff	2	0	Sheriff	4	0
			Benton	5	1
NEWTON COUNTY	1	0	SEBASTIAN COUNTY	55	5
Sheriff	1	0	Sheriff	3	0
			Fort Smith	52	5
OUACHITA COUNTY	7	0	SHARP COUNTY	4	0
Sheriff	3	0	Sheriff	4	0
Camden	4	0			
PERRY COUNTY	1	1	UNION COUNTY	10	1
Sheriff	1	1	El Dorado	10	1
PHILLIPS COUNTY	3	0	VAN BUREN COUNTY	0	1
Sheriff	2	0	Sheriff	0	1
Helena	1	0			
PIKE COUNTY	1	0	WASHINGTON COUNTY	14	6
Sheriff	1	0	Sheriff	3	0
			Fayetteville	7	3
			Springdale	4	3
POINSETT COUNTY	2	0	WHITE COUNTY	4	0
Sheriff	1	0	Sheriff	3	0
Trumann	1	0	Kensett	1	0
POLK COUNTY	3	0	WOODRUFF COUNTY	5	0
Sheriff	3	0	Sheriff	5	0
POPE COUNTY	7	3	YELL COUNTY	1	0
Sheriff	5	0	Dardanelle	1	0
Russellville	2	3			
PRAIRIE COUNTY	3	0	STATE TOTAL	626	148
Sheriff	3	0			

*Agencies reporting no rapes are not listed.

ACIC Agent Staff Areas

