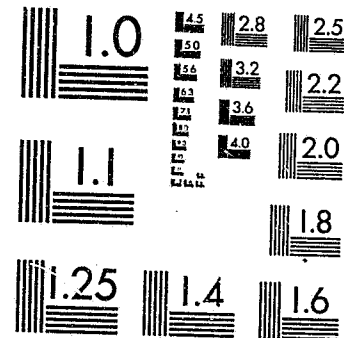


National Criminal Justice Reference Service

ncjrs

This microfiche was produced from documents received for inclusion in the NCJRS data base. Since NCJRS cannot exercise control over the physical condition of the documents submitted, the individual frame quality will vary. The resolution chart on this frame may be used to evaluate the document quality.



MICROCOPY RESOLUTION TEST CHART
NATIONAL BUREAU OF STANDARDS-1963-A

Microfilming procedures used to create this fiche comply with the standards set forth in 41CFR 101-11.504.

Points of view or opinions stated in this document are those of the author(s) and do not represent the official position or policies of the U. S. Department of Justice.

National Institute of Justice
United States Department of Justice
Washington, D. C. 20531

2/21/86

ICPSR
Inter-university Consortium for
Political and Social Research

National Jail Census, 1978

U.S. Dept. of Justice
Bureau of Justice Statistics

96112

ICPSR 7737

96112

NATIONAL JAIL CENSUS, 1978

(ICPSR 7737)

Principal Investigator

U.S. Department of Justice
Bureau of Justice Statistics

Inter-university Consortium for Political
and Social Research

P.O. BOX 1248
Ann Arbor, Michigan 48106

Second ICPSR Edition
Summer, 1984

U.S. Department of Justice
National Institute of Justice

This document has been reproduced exactly as received from the person or organization originating it. Points of view or opinions stated in this document are those of the authors and do not necessarily represent the official position or policies of the National Institute of Justice.

Permission to reproduce this copyrighted material has been granted by
Public Domain
U.S. Department of Justice

to the National Criminal Justice Reference Service (NCJRS).

Further reproduction outside of the NCJRS system requires permission of the copyright owner.

Table of Contents

	Page No.
Introduction	
Study Description	i
Processing Information and File Structure	ii
Codebook Information	iii
Variable Description List	v
Codebook	1
Questionnaires	
Form CJ3	
Form CJ4	

NCJRS
JAN 7 1985
ACQUISITIONS

Acknowledgment of Assistance

All manuscripts utilizing data made available through the Consortium should acknowledge that fact as well as identify the original collector of the data. The ICPSR Council urges all users of the ICPSR data facilities to follow some adaptation of this statement with the parentheses indicating items to be filled in appropriately or deleted by the individual user.

The data (and tabulations) utilized in this (publication) were made available (in part) by the Inter-university Consortium for Political and Social Research. The data for the NATIONAL JAIL CENSUS, 1978 were originally collected by the Bureau of the Census for the Bureau of Justice Statistics. Neither the collectors of the original data nor the Consortium bear any responsibility for the analyses or interpretations presented here.

In order to provide funding agencies with essential information about the use of archival resources and to facilitate the exchange of information about ICPSR participants' research activities, each user of the ICPSR data facilities is expected to send two copies of each completed manuscript or thesis abstract to the Consortium. Please indicate in the cover letter which data were used.

Study Description

The National Jail Census, 1978 was conducted in early 1978 by the United States Bureau of the Census for the Bureau of Justice Statistics under the National Prisoner Statistics program. The Census was conducted to determine the existing and future needs in correctional facilities in the Nation and to assess the adequacy of Federal, State, and local programs in meeting these needs. The Census was conducted for all locally administered county and municipal jails having the authority to hold prisoners for more than 48 hours. For the purposes of this study, a jail consists of a confinement facility administered by a local law enforcement agency which holds persons, usually adults but sometimes also juveniles, detained pending adjudication and/or committed after adjudication for sentences of one year or less. Temporary holding facilities, or lockups, that do not hold persons after being formally charged in court (usually within 48 hours of arraignment) are excluded.

The data were collected by mailed questionnaires, utilizing two different forms. Form CJ4 (short form) was employed for small facilities, i.e., facilities having an average daily inmate population of less than 50 inmates. The longer form, Form CJ3 was used for institutions having an average daily inmate population of 50 or more. Form CJ3 includes all the questions asked on Form CJ4 plus some additional questions regarding facility staffing and type of health care provided to the inmates. The records for all facilities have been coded according to the longer form, Form CJ3, with the appropriate locations padded as missing data for facilities which responded to the short form, Form CJ4.

The variables include: jail population by legal status (reason for being held), age and sex of prisoners, maximum sentence, admissions and releases, availability of services to prisoners, structural characteristics and capacity of the jail, expenditure and employment data for the facility.

Data are presented for 3,493 jails in 45 states. Five states: Connecticut, Delaware, Hawaii, Rhode Island and Vermont were excluded from the study since they had integrated jail-prison systems. One state, Alaska, which had 6 locally operated jails in addition to an integrated jail-prison system, was included.

Comparable data for 1970, 1972 and 1983 are also available from the ICPSR. Data for 1970 are available in the National Jail Census, 1970 (ICPSR 7641), data for 1972 are in the National Jail Census, 1972 (ICPSR 7638), and data for 1983 are in the National Jail Census, 1983 (ICPSR 8203).

FILE STRUCTURE

The National Jail Census, 1978 is available from the ICPSR in two formats: card-image and OSIRIS. The card-image file contains several decks per case in a format based on 80 column punched cards. The data are sorted by case with all decks for a case together in ascending order.

The OSIRIS dictionary gives the format and other information for each variable in the OSIRIS data file. The dictionary or dictionary-codebook file is used in conjunction with the OSIRIS software package. The OSIRIS data file is constructed with a single logical record for each case. There are 300 variables on 3,493 cases. The data are not weighted.

The OSIRIS data file can be accessed directly through software packages or programs which do not use the OSIRIS dictionary by specifying the tape locations of the desired variables. These tape locations are given in the OSIRIS dictionary-codebook.

CODEBOOK INFORMATION

The example below is a reproduction of information appearing in the machine-readable codebook for a typical variable. The numbers in brackets do not appear but are references to the descriptions which follow this example.

.....

[1] VAR 0003	[2] GOVT LEVEL NUMBER	NO MISSING DATA CODES
REF 0003	[4] LOC 4	[5] DK. COL
		[6] IMP DEC= d

[7] Level of government

[8]

[9] SEE NOTE(S) X

[10] Actual number is coded.

[11] [12]

1. County institution
 2. City insitution
-

[1] Indicates the variable and reference numbers. A variable number and a reference number are assigned to each variable in the data collection. In the present codebook which documents the archived data collection these numbers are identical. Should the data be subsetted or rearranged by an OSIRIS program (e.g., MMP to intersperse data from another source, or TCOT to produce an analysis deck), the variable numbers would change to reflect the order of the new data collection, while the reference number would remain unchanged to reflect the variable number in the codebook describing the archived data collection.

- [2] Indicates the abbreviated variable name (maximum of 24 characters) used in the OSIRIS system to identify the variable for the user. An expanded version of the variable name can be found in the variable description list.
- [3] Indicates the code values of missing data. In this example, there are no missing data values (NO MISSING DATA CODES). Alternative statements for other variables are "MD=0," or "MD GE 9." Some analysis software packages (including the OSIRIS software package) require that certain types of data which the user desires to be excluded from analysis be designated as "MISSING DATA," e.g., inappropriate, unascertained, unascertainable, or ambiguous data categories. Although these codes are defined as missing data categories, this does not mean that the user should not or cannot use them in a substantive role if so desired.
- [4] Indicates the starting location and width of this variable when the data are stored on a magnetic tape in the OSIRIS format. If the variable is of a multiple-response type, the width referenced is that of a single response. In this example the variable named "GOVT LEVEL NUMBER" is 1 column wide and is located in the 4th column within the record.
- [5] Indicates the location by deck and column of this variable when the data are stored on cards or in card-image format (80-column format).
- [6] A variable containing data with implied decimals is denoted by the message "IMP DEC= d," where d is the number of decimal places implied in the variable.
- [7] This is the full text (question) supplied by the investigator to describe the variable. The question text and the numbers and letters that may appear at the beginning reflect the original wording of the questionnaire item.
- [8] Indicates an additional comment or explanation appended to the variable description.
- [9] A variable which has a footnote associated with it is denoted by the message, "SEE NOTE(S) X" where X is the number of the footnote referenced.

- [10] "Actual number is coded" appears in the codebook to indicate that the variable has been declared continuous.
- [11] Indicates the code values occurring in the data for this variable.
- [12] Indicates the textual definitions of the codes. Abbreviations commonly used in the code definitions are "DK" (Do Not Know), "NA" (Not Ascertained), and "INAP" (Inappropriate).

ICPSR PROCESSING INFORMATION

The data collection was processed according to the standard ICPSR processing procedures. The data were checked for illegal or inconsistent code values which, when found, were recoded to OSIRIS missing data values. No consistency checks were performed. Statements bracketed in "[" and "]" signs in the body of the codebook were added by the processors for explanatory purposes.

Variable Description List

ICPSR PROCESSING VARIABLES

1. ICPSR Study Number-7737
2. ICPSR Edition Number-3
3. ICPSR Part Number-1
4. ICPSR Sequential Case Identification Number

IDENTIFICATION VARIABLES

5. Survey Form
6. Government Divisions State Code
7. Level of Government
8. County Number
9. City Number
10. Check Digit

--New Agency Identification Number--

11. Primary New Agency Number
12. Secondary New Agency Number
13. Unique New Agency Number
14. Sex of Inmates
15. Number of Female Inmates
16. Total Inmates

IMPUTED DATA FOR NON-RESPONDENTS

17. Census Imputed Data Cases

LENGTH OF TIME SERVED IN FACILITY

18. Frequency People Held More Than 48 Hours

--Length of Maximum Sentence Served at Facility--

19. Type of Maximum Sentence Set by Law
20. Maximum Sentence in Years
21. Maximum Sentence in Months
22. Maximum Sentence in Days

PERSONS HELD IN FACILITY

- 23. Adult Males
- 24. Adult Females
- 25. Juveniles

FACILITY STRUCTURAL INFORMATION

- 26. Facility is a Separate Structure
- 27. Year Constructed
- 28. Year First Used as a Jail

RENOVATION OF FACILITY

- 29. Renovation Plans Exist

--Increase in Capacity--

- 30. Anticipated Year of Change
- 31. Number of Beds to be Added
- 32. Total Estimated Cost
- 33. Funds Are Committed

--Decrease in Capacity--

- 34. Anticipated Year of Change
- 35. Number of Beds to be Removed
- 36. Total Estimated Cost
- 37. Funds Are Committed

--No Change in Capacity--

- 38. Anticipated Year of Change
- 39. Total Estimated Cost
- 40. Funds Are Committed

--Closing Part of Facility With Decrease in Capacity--

- 41. Anticipated Year of Change
- 42. Number of Beds to be Removed

--Closing Entire Facility--

- 43. Anticipated Year of Change
- 44. Number of Beds to be Removed

PLANS FOR BUILDING/ACQUIRING A NEW JAIL

- 45. Plan to Build or Acquire a New Jail
- 46. Year New Jail is to be Opened
- 47. Number of Beds Planned
- 48. Total Estimated Cost
- 49. Funds Are Committed

FACILITY POPULATION

--Average Daily WEEKDAY Population at Facility--

- 50. Total Population
- 51. Male Population
- 52. Female Population
- 53. Juvenile Population

--Average Daily WEEKEND Population at Facility--

- 54. Total Population
- 55. Male Population
- 56. Female Population
- 57. Juvenile Population

--Weekly Admissions and Releases--

- 58. Weekly Admissions
- 59. Weekly Releases

NUMBER OF INMATES ON FEBRUARY 15, 1978

--Total Population--

- 60. Total Number
- 61. Total Not Yet Arraigned
- 62. Total Arraigned and Awaiting Trial or Being Tried
- 63. Total Convicted and Awaiting Sentence
- 64. Total Serving Sentences of One Year or Less
- 65. Total Serving Sentences of More Than One Year
- 66. Total Held on Probation or Parole Violation Charges
- 67. Total Held for Other Reasons

--Adult Male Population--

- 68. Total Number
- 69. Total Not Yet Arraigned
- 70. Total Arraigned and Awaiting Trial or Being Tried
- 71. Total Convicted and Awaiting Sentence
- 72. Total Serving Sentences of One Year or Less
- 73. Total Serving Sentences of More Than One Year
- 74. Total Held on Probation or Parole Violation Charges
- 75. Total Held for Other Reasons

--Adult Female Population--

- 76. Total Number
- 77. Total Not Yet Arraigned
- 78. Total Arraigned and Awaiting Trial or Being Tried
- 79. Total Convicted and Awaiting Sentence
- 80. Total Serving Sentences of One Year or Less
- 81. Total Serving Sentences of More Than One Year
- 82. Total Held on Probation or Parole Violation Charges
- 83. Total Held for Other Reasons

--Juvenile Population--

- 84. Total Number of Males
- 85. Total Number of Females

PRISONERS BEING HELD FOR OTHER AUTHORITIES

--Held for Federal Authorities--

- 86. Number Held
- 87. Number Held Due to Overcrowding
- 88. Number Held for Other Reasons

--Held for State Authorities--

- 89. Number Held
- 90. Number Held Due to Overcrowding
- 91. Number Held for Other Reasons

--Held for Other County or City Authorities--

- 92. Number Held
- 93. Number Held Due to Overcrowding
- 94. Number Held for Other Authorities for Other Reasons

FACILITY CAPACITY

- 95. Total Design/Rated Sleeping Capacity of Jail

CELLS OR ROOMS WITH BEDS

--Units Designed for ONE Inmate--

- 96. Number of Units
- 97. Total Number of Inmates Assigned to Unit
- 98. Average Floor Space of Unit
- 99. Inmate Capacity per Unit

--Units Designed for TWO Inmates--

- 100. Number of Units
- 101. Total Number of Inmates Assigned to Unit
- 102. Average Floor Space of Unit
- 103. Inmate Capacity per Unit

--Units Designed for THREE Inmates--

- 104. Number of Units
- 105. Total Number of Inmates Assigned to Unit
- 106. Average Floor Space of Unit
- 107. Inmate Capacity per Unit

--Units Designed for FOUR Inmates--

- 108. Number of Units
- 109. Total Number of Inmates Assigned to Unit
- 110. Average Floor Space of Unit
- 111. Inmate Capacity per Unit

--Units Designed for Five [Three] or More Inmates--

--Cells or Dormitories: First Mention--

- 112. Size
- 113. Number of Units
- 114. Total Number of Inmates Assigned to Unit
- 115. Average Floor Space of Unit
- 116. Inmate Capacity per Unit

--Cells or Dormitories: Second Mention--

- 117. Size
- 118. Number of Units
- 119. Total Number of Inmates Assigned to Unit
- 120. Average Floor Space of Unit
- 121. Inmate Capacity per Unit

--Cells or Dormitories: Third Mention--

- 122. Size
- 123. Number of Units
- 124. Total Number of Inmates Assigned to Unit
- 125. Average Floor Space of Unit
- 126. Inmate Capacity per Unit

-- Units Designed for Five [Three] or More Inmates--

--Cells or Dormitories: Fourth Mention--

- 127. Size
- 128. Number of Units
- 129. Total Number of Inmates Assigned to Unit
- 130. Average Floor Space of Unit
- 131. Inmate Capacity per Unit

--Cells or Dormitories: Fifth Mention--

- 132. Size
- 133. Number of Units
- 134. Total Number of Inmates Assigned to Unit
- 135. Average Floor Space of Unit
- 136. Inmate Capacity per Unit

--Cells or Dormitories: Sixth Mention--

- 137. Size
- 138. Number of Units
- 139. Total Number of Inmates Assigned to Unit
- 140. Average Floor Space of Unit
- 141. Inmate Capacity of Unit

OTHER UNITS WITH BEDS

--First Mention--

- 142. Size of Unit
- 143. Number of Units
- 144. Total Number of Inmates Assigned to Unit
- 145. Average Floor Space of Unit
- 146. Inmate Capacity per Unit

--Second Mention--

- 147. Size of Unit
- 148. Number of Units
- 149. Total Number of Inmates Assigned to Unit
- 150. Average Floor Space of Unit
- 151. Inmate Capacity per Unit

--Third Mention--

- 152. Size of Unit
- 153. Number of Units
- 154. Total Number of Inmates Assigned to Unit
- 155. Average Floor Space of Unit
- 156. Inmate Capacity per Unit

--Fourth Mention--

- 157. Size of Unit
- 158. Number of Units
- 159. Total Number of Inmates Assigned to Unit
- 160. Average Floor Space of Unit
- 161. Inmate Capacity per Unit

OTHER UNITS WITHOUT BEDS

--First Mention--

- 162. Type of Unit
- 163. Number of Units
- 164. Total Number of Inmates Assigned to Unit
- 165. Average Floor Space of Unit
- 166. Inmate Capacity per Unit

--Second Mention--

- 167. Type of Unit
- 168. Number of Units
- 169. Total Number of Inmates Assigned to Unit
- 170. Average Floor Space of Unit
- 171. Inmate Capacity per Unit

--Third Mention--

- 172. Type of Unit
- 173. Number of Units
- 174. Total Number of Inmates Assigned to Unit
- 175. Average Floor Space of Unit
- 176. Inmate Capacity per Unit

--Fourth Mention--

- 177. Type of Unit
- 178. Number of Units
- 179. Total Number of Inmates Assigned to Unit
- 180. Average Floor Space of Unit
- 181. Inmate Capacity per Unit

FACILITY CAPACITY

--Total Number of Inmates--

- 182. Total Number of Inmates Assigned to Units
- 183. Total Inmate Capacity per all Units

EMPLOYEE INFORMATION

--Number of Full-Time Employees--

- 184. Total Number
- 185. Administration
- 186. Custodial Officers
- 187. Clerical and Maintenance Personnel
- 188. Academic Teachers
- 189. Vocational Teachers
- 190. Social Workers
- 191. Psychologists
- 192. Psychiatrists
- 193. Medical Doctors
- 194. Nurses
- 195. Paramedics
- 196. Other Personnel

--Number of Part-Time Employees

- 197. Total Number
- 198. Administration
- 199. Custodial Officers
- 200. Clerical and Maintenance Personnel
- 201. Academic Teachers
- 202. Vocational Teachers
- 203. Social Workers
- 204. Psychologists
- 205. Psychiatrists
- 206. Medical Doctors
- 207. Nurses
- 208. Paramedics
- 209. Other Personnel

FACILITY PROGRAMS

--Work Release Program--

- 210. Facility Has Work-Release Program

--Number of Inmates Participating in Program--

- 211. Male Inmates
- 212. Female Inmates

--Weekend Sentence Program

- 213. Does Facility Have Weekend Sentence Program?

--Number of Inmates Participating in Program--

- 214. Male Inmates
- 215. Female Inmates

INMATE HEALTH CARE AT FACILITY

--Health/Medical Examinations Upon Admission--

- 216. Health Interview or "Screening"
- 217. Medical Physical Examination

--Routine Tests/Exams in Admission Physical--

- 218. Blood Pressure Taken
- 219. Blood Sample Taken for Venereal Disease
- 220. Blood Sample Taken for Hepatitis
- 221. Blood Sample Taken for Other Reasons
- 222. Skin Test for Tuberculosis
- 223. Chest X-Ray
- 224. Dental Examination
- 225. Eye Examination
- 226. Height Measured
- 227. Weight Measured
- 228. Pulse Taken
- 229. Temperature Taken
- 230. Urine Sample Taken
- 231. Heartbeat Checked
- 232. Other
- 233. Physical Varies According to Condition of Inmate
- 234. Tests Cannot be Specified

--Health Care Personnel Administering Tests--

- 235. Doctor
- 236. Nurse
- 237. Paramedic
- 238. Admitting Officer
- 239. Other
- 240. Person Not Ascertainable

--Drug/Alcohol Diagnostic Tests upon Admission--

- 241. Drug Diagnostic Test Given
- 242. Alcohol Diagnostic Test Given

--Drug Counseling/Group Administering Program--

- 243. Drug Counseling Run by Facility
- 244. Drug Counseling Run by Other Organization
- 245. Drug Counseling Not Offered

--Alcohol Counseling/Group Administering Program--

- 246. Alcohol Counseling Run by Facility
- 247. Alcohol Counseling Run by Other Organization
- 248. Alcohol Counseling Not Offered

--Medical Facilities Available in the Jail--

- 249. No Medical Facilities
- 250. Medical Examining Room
- 251. Overnight Infirmary
- 252. Other Facility
- 253. Various Other Facilities
- 254. Dispensary for Medicine
- 255. Number of Inmates Currently under Medication
- 256. Frequency of Sick Calls
- 257. Distance to Emergency Medical Facility

--Availability of Doctor Within the Jail--

- 258. 24 Hours a Day
- 259. 16 Hours a Day
- 260. 8 Hours a Day
- 261. 4 Hours a Day
- 262. Less Than 4 Hours a Day
- 263. On Call
- 264. Never
- 265. Less Than Daily

--Availability of Nurse Within the Jail--

- 266. 24 Hours a Day
- 267. 16 Hours a Day
- 268. 8 Hours a Day
- 269. 4 Hours a Day
- 270. Less Than 4 Hours
- 271. On Call
- 272. Never
- 273. Less Than Daily

--Availability of Parmedic Within the Jail--

- 274. 24 Hours a Day
- 275. 16 Hours a Day
- 276. 8 Hours a Day
- 277. 4 Hours a Day
- 278. Less Than 4 Hours
- 279. On Call
- 280. Never
- 281. Less Than Daily

--Other Health Care Information--

- 282. Is Physician Responsible for Medical Services

INMATE DEATHS IN FACILITY FOR CALENDAR YEAR 1977

--Adult Male Deaths--

- 283. Total Adult Male Deaths
- 284. Deaths Due to Illness or Natural Causes
- 285. Deaths Due to Suicide
- 286. Deaths by Accidental Injury to Self
- 287. Deaths Due to Injury by Another Person
- 288. Deaths Due to Other Causes

--Adult Female Deaths--

- 289. Total Adult Female Deaths
- 290. Deaths Due to Illness or Natural Causes
- 291. Deaths Due to Suicide
- 292. Deaths by Accidental Injury to Self
- 293. Deaths Due to Injury by Another Person
- 294. Deaths Due to Other Causes

--Juvenile Inmate Deaths--

- 295. Total Juvenile Deaths
- 296. Deaths Due to Illness or Natural Causes
- 297. Deaths Due to Suicide
- 298. Deaths by Accidental Injury to Self
- 299. Deaths Due to Injury by Another Person
- 300. Deaths Due to Other Causes

DECK IDENTIFICATION NUMBER IS '01'

DK 1 COL 1- 2

VAR 0001
REF 0001

ICPSR STUDY NUMBER-7737
LOC 1 WIDTH 4

NO MISSING DATA CODES
DK 1 COL 3- 6

ICPSR Study Number-7737

7737. The ICPSR has attached this number as a unique data collection identification number.

VAR 0002
REF 0002

ICPSR EDITION NUMBER-3
LOC 5 WIDTH 1

NO MISSING DATA CODES
DK 1 COL 7

ICPSR Edition Number-3

The number identifying the release edition of the data collection.

3. Third ICPSR edition; summer, 1984 release

VAR 0003
REF 0003

ICPSR PART NUMBER-1
LOC 6 WIDTH 1

NO MISSING DATA CODES
DK 1 COL 8

ICPSR Part Number-1

The number identifying this part of a one-part data collection.

1. The entire data collection is contained in one part

VAR 0004 ICPSR SEQUENTIAL ID NO MISSING DATA CODES
 REF 0004 LOC 7 WIDTH 4 DK 1 COL 9-12

ICPSR Sequential Case Identification Number

The ICPSR has attached a sequential case identification number to uniquely identify each case.

VAR 0005 FORM NUMBER NO MISSING DATA CODES
 REF 0005 LOC 11 WIDTH 1 DK 1 COL 13

Form Number

The survey form number which the agency filled out

Two different survey forms were employed:

1. Form CJ3 - which was sent to jails having an average daily population of 50 or more, and
2. Form CJ4 - which was sent to jails having an average daily population of less than 50

Both survey forms are documented in this volume. Form CJ3 includes all of the questions which were asked on Form CJ4 plus some additional questions regarding structural aspects of the facility, facility staffing, and the type of health care provided to the inmates. The records for ALL of the facilities were coded according to the longer form, Form CJ3, with the appropriate locations padded as missing data for those facilities which responded to the short form, Form CJ4. The codebook documents variables which apply only to Form CJ3, as well as any question number or wording differences which exist between the two forms.

3. Form CJ3
4. Form CJ4

VAR 0006 GOVT STATE NUMBER NO MISSING DATA CODES
 REF 0006 LCC 12 WIDTH 2 DK 1 COL 14-15

Government Divisions State Identification Number

01. Alabama
02. Alaska
03. Arizona
04. Arkansas
05. California
06. Colorado
07. Connecticut [omitted from survey, see Introduction]
08. Delaware [omitted from survey, see Introduction]
09. District of Columbia
10. Florida
11. Georgia
12. Hawaii [omitted from survey, see Introduction]
13. Idaho
14. Illinois
15. Indiana
16. Iowa
17. Kansas
18. Kentucky
19. Louisiana
20. Maine
21. Maryland
22. Massachusetts
23. Michigan
24. Minnesota
25. Mississippi
26. Missouri
27. Montana
28. Nebraska
29. Nevada
30. New Hampshire
31. New Jersey
32. New Mexico
33. New York
34. North Carolina
35. North Dakota
36. Ohio
37. Oklahoma
38. Oregon
39. Pennsylvania
40. Rhode Island [omitted from survey, see Introduction]

(CONTINUED)

- 41. South Carolina
- 42. South Dakota
- 43. Tennessee
- 44. Texas
- 45. Utah
- 46. Vermont [omitted from survey, see Introduction]
- 47. Virginia
- 48. Washington
- 49. West Virginia
- 50. Wisconsin
- 51. Wyoming

.....

VAR 0007	GOVT LEVEL NUMBER	NO MISSING DATA CODES
REF 0007	LOC 14 WIDTH 1	DK 1 COL 16

Level of Government

- 1. County institution
- 2. City institution

.....

VAR 0008	GOVT COUNTY NUMBER	NO MISSING DATA CODES
REF 0008	LOC 15 WIDTH 3	DK 1 COL 17-19

Government County Number

County numbers are assigned alphabetically and are unique only within a given state.

.....

VAR 0009	GOVT CITY NUMBER	NO MISSING DATA CODES
REF 0009	LOC 18 WIDTH 3	DK 1 COL 20-22

Government City Number

City numbers are assigned alphabetically and are unique only

(CONTINUED)

within a given state. If the jail is a county institution, then the city number is padded with the county number.

.....

VAR 0010	CHECK DIGIT	NO MISSING DATA CODES
REF 0010	LOC 21 WIDTH 1	DK 1 COL 23

Check Digit

.....

VAR 0011	PRIM NEW AGENCY ID	NO MISSING DATA CODES
REF 0011	LOC 22 WIDTH 1	DK 1 COL 24

Primary New Agency Identification Number

6.

.....

VAR 0012	SECND NEW AGENCY ID	NO MISSING DATA CODES
REF 0012	LOC 23 WIDTH 1	DK 1 COL 25

Secondary New Agency Identification Number

0.

.....

VAR 0013	UNIQUE NEW AGENCY ID #	NO MISSING DATA CODES
REF 0013	LOC 24 WIDTH 2	DK 1 COL 26-27

Unique New Agency Identification Number

Actual number is coded.

VAR 0014 SEX OF INMATES MD=9
REF 0014 LOC 26 WIDTH 1 DK 1 COL 28

What is the sex of the inmates [held in this facility]?

- 01. Male
- 02. Female
- 03. Both male and female
- 09. NA

VAR 0015 NUMBER OF FEMALE INMATES NO MISSING DATA CODES
REF 0015 LOC 27 WIDTH 1 DK 1 COL 29

What is the number of FEMALE inmates in this facility?

- 00. None
- 01. One female inmate
- 02. 2-4 female inmates
- 03. 5-9 female inmates
- 04. 10-24 female inmates
- 05. 25-49 female inmates
- 06. 50-99 female inmates
- 07. 100-199 female inmates
- 08. 200-299 female inmates
- 09. Over 300 female inmates

VAR 0016 TOTAL # OF INMATES MD=-1
REF 0016 LOC 28 WIDTH 2 DK 1 COL 30-31

Total number of inmates

- 00. 1-24 inmates
- 01. 25-49 inmates
- 02. 50-99 inmates
- 03. 100-249 inmates
- 04. 250-499 inmates
- 05. 500-749 inmates

(CONTINUED)

- 06. 750-999 inmates
- 07. 1,000-1,499 inmates
- 08. 1,500-1,999
- 09. Over 2,000 inmates

-1. NA

VAR 0017 IMPUTED DATA CASES MD=0
REF 0017 LOC 30 WIDTH 1 DK 1 COL 32

Census Imputed Data Cases

- 9. Imputed data
- 0. INAP

VAR 0018 HOLD OVER 48 HRS OFTEN ? MD=9
REF 0018 LOC 31 WIDTH 1 DK 1 COL 33

Q.1. How often do you hold people in this facility more than 48 hours?

- 2. Sometimes
- 3. Usually or always
- 9. NA

VAR 0019 TYPE OF MAX SENTENCE MD=9
REF 0019 LOC 32 WIDTH 1 DK 1 COL 34

Q.2. NORMALLY, what is the maximum sentence that can be served in this jail by law?

- 1. Sentenced prisoners may not serve their terms in this jail

(CONTINUED)

2. Normally, the maximum that may be served here is some definite period
3. No maximum; any length may be served here
9. NA

.....
 VAR 0020 MAX SENTENCE IN YEARS MD=-1
 REF 0020 LOC 33 WIDTH 2 DK 1 COL 35-36

-- IF Q.2 IS CODED 2 --

Q.2(1). Normally, the maximum sentence that may be served here is: [years]?

Actual number is coded.

- 1. Inap., Q.2 coded other than 2; maximum sentence not coded in years; NA
-

VAR 0021 MAX SENTENCE IN MONTHS MD=-1
 REF 0021 LOC 35 WIDTH 2 DK 1 COL 37-38

-- IF Q.2 IS CODED 2 --

Q.2(2). Normally, the maximum sentence that may be served here is: [months]?

Actual number is coded.

- 1. Inap., Q.2 coded other than 2; maximum sentence not coded in months; NA

VAR 0022 MAX SENTENCE IN DAYS MD=-1
 REF 0022 LOC 37 WIDTH 2 DK 1 COL 39-40

-- IF Q.2 IS CODED 2 --

Q.2(3). Normally, the maximum sentence that may be served here is: [days]?

Actual number is coded.

- 1. Inap., Q.2 coded other than 2; maximum sentence not coded in days; NA
-

VAR 0023 TYPE HELD IN JAIL (MALE) MD=9
 REF 0023 LOC 39 WIDTH 1 DK 1 COL 41

Q.3(1). What types of persons are confined or held in this jail: [adult males]?

1. Yes, adult males held
 9. No; NA
-

VAR 0024 TYPE HELD IN JAIL (FEMALE) MD=9
 REF 0024 LOC 40 WIDTH 1 DK 1 COL 42

Q.3(2). What types of persons are confined or held in this jail: [adult females]?

2. Yes, adult females held
9. No; NA

VAR 0025 TYPE HELD IN JAIL (JUV) MD=9
 REF 0025 LOC 41 WIDTH 1 DK 1 COL 43

Q.3(3). What types of persons are confined or held in this jail: [juveniles]?

For the purposes of this survey, a juvenile is defined as a person subject to the juvenile court jurisdiction based on age and offense limitations as defined by State law. Persons above the statutory age limit for juveniles who are being held under special "youth" statutes, e.g., "youthful offenders" in California, "adolescents" or "minors" in New York, etc. should be considered as adults.

- 3. Yes, juveniles held
- 9. No; NA

VAR 0026 TYPE OF JAIL STRUCTURE MD=9
 REF 0026 LOC 42 WIDTH 1 DK 1 COL 44

Q.4. Is this jail structurally a part of one of the following?

- 1. Police station
- 2. Sheriff's office
- 3. Courthouse
- 4. Separate structure
- 5. Multi-purpose building
- 6. Other
- 9. NA

VAR 0027 YEAR OF CONSTRUCTION MD=-1
 REF 0027 LOC 43 WIDTH 4 DK 1 COL 45-48

Q.5(a). In what year was the building constructed?

(CONTINUED)

1754.

1978.

-001. NA

VAR 0028 YEAR JAIL FIRST USED MD=-1
 REF 0028 LOC 47 WIDTH 4 DK 1 COL 49-52

Q.5(b). In what year was the building first used as a jail?

1754.

1978.

-001. NA

VAR 0029 PLANS TO RENOVATE ? MD=9
 REF 0029 LOC 51 WIDTH 1 DK 1 COL 53

Q.6. Are there any definite plans to renovate the existing space in this facility or add to or close the structure between now and December 31, 1982?

Include all plans which have received final administrative approval, even though the necessary funds may not yet have been committed.

- 1. Yes
- 2. No
- 3. DK
- 9. NA

VAR 0030 RENO INCRS CAPACITY- YR MD=-1
REF 0030 LOC 52 WIDTH 2 DK 1 COL 54-55

-- IF Q.6 IS CODED 1--

Q.6a Type of change planned: renovation or addition with increase in capacity

Q.6a(a). Anticipated year of change [CODE LAST TWO DIGITS OF YEAR]?

Actual number is coded.

78. 1978

82. 1982

-1. Inap., Q.6 coded other than 1; no increase in capacity planned; NA

VAR 0031 RENO INCRS # BED (AD/RE) MD=-1
REF 0031 LOC 54 WIDTH 5 DK 1 COL 56-60

-- IF Q.6 IS CODED 1--

Q.6a Type of change planned: renovation or addition with increase in capacity

Q.6a(b). Number of beds to be added?

Actual number is coded.

-01. Inap., Q.6 coded other than 1; no increase in capacity planned; NA

VAR 0032 RENO INCRS TOT. COST MD=-1
REF 0032 LOC 59 WIDTH 7 DK 1 COL 61-67

-- IF Q.6 IS CODED 1 --

Q.6a Type of change planned: renovation or addition with increase in capacity

Q.6a(c). Total estimated cost [in dollars (omit cents)]?

Actual number is coded.

-1. Inap., Q.6 coded other than 1; no increase in capacity planned; NA

VAR 0033 RENO INCRS COMMITTED \$ MD=9
REF 0033 LOC 66 WIDTH 1 DK 1 COL 68

-- IF Q.6 IS CODED 1 --

Q.6a Type of change planned: renovation or addition with increase in capacity

Q.6a(d). Have any funds been committed?

- 1. Yes
- 2. No

9. Inap., Q.6 coded other than 1; no increase in capacity planned; NA

VAR 0034 RENO DECRS CAPACITY-YR MD=-1
REF 0034 LOC 67 WIDTH 2 DK 1 COL 69-70

-- IF Q.6 IS CODED 1 --

Q.6b Type of change planned: renovation with decrease in capacity

(CONTINUED)

Q.6b(a). Anticipated year of change [CODE LAST TWO DIGITS OF YEAR]?

78. 1978

82. 1982

-1. Inap., Q.6 coded other than 1; no decrease in capacity planned; NA

VAR 0035 RENO DECRS # BED (AD/RE) MD=-1
REF 0035 LOC 69 WIDTH 5 DK 1 COL 71-75

-- IF Q.6 IS CODED 1 --

Q.6b Type of change planned: renovation with decrease in capacity

Q.6b(b). Number of beds to be removed?

Actual number is coded.

-001. Inap., Q.6 coded other than 1; no decrease in capacity planned; NA

DECK IDENTIFICATION NUMBER IS '02' DK 2 COL 1- 2

VAR 0001 ICPSR STUDY NUMBER-7737 NO MISSING DATA CODES
REF 0001 LOC 1 WIDTH 4 DK 2 COL 3- 6

ICPSR Study Number-7737

7737. The ICPSR has attached this number as a unique data collection identification number.

VAR 0002 ICPSR EDITION NUMBER-3 NO MISSING DATA CODES
REF 0002 LOC 5 WIDTH 1 DK 2 COL 7

ICPSR Edition Number-3

The number identifying the release edition of the data collection.

3. Third ICPSR edition; summer, 1984 release

VAR 0003 ICPSR PART NUMBER-1 NO MISSING DATA CODES
REF 0003 LOC 6 WIDTH 1 DK 2 COL 8

ICPSR Part Number-1

The number identifying this part of a one-part data collection.

1. The entire data collection is contained in one part

VAR 0004 ICPSR SEQUENTIAL ID NO MISSING DATA CODES
REF 0004 LOC 7 WIDTH 4 DK 2 COL 9-12

ICPSR Sequential Case Identification Number

The ICPSR has attached a sequential case identification number to uniquely identify each case.

VAR 0036 RENO DECRS TOT. COST MD=-1
REF 0036 LOC 74 WIDTH 7 DK 2 COL 13-19

-- IF Q.6 IS CODED 1 --

(CONTINUED)

Q.6b Type of change planned: renovation with decrease in capacity

Q.6b(c). Total estimated cost [in dollars (omit cents)]?

Actual number is coded.

-1. Inap., Q.6 coded other than 1; no decrease in capacity planned; NA

VAR 0037 RENOV DECRS COMMITTED \$ MD=9
REF 0037 LOC 81 WIDTH 1 DK 2 COL 20

-- IF Q.6 IS CODED 1 --

Q.6b Type of change planned: renovation with decrease in capacity

Q.6b(d). Have funds been committed?

- 1. Yes
2. No

9. Inap., Q.6 coded other than 1; no decrease in capacity planned; NA

VAR 0038 RENOV NOCHG CAPACITY- YR MD=-1
REF 0038 LOC 82 WIDTH 2 DK 2 COL 21-22

-- IF Q.6 IS CODED 1 --

Q.6c Type of change planned: renovation with no change in capacity

Q.6c(a). Anticipated year of change [CODE LAST TWO DIGITS OF YEAR]?

(CONTINUED)

78. 1978

82. 1982

-1. Inap., Q.6 coded other than 1; change in capacity planned; NA

VAR 0039 RENOV NOCHG TOT. COST MD=-1
REF 0039 LOC 84 WIDTH 7 DK 2 COL 23-29

-- IF Q.6 IS CODED 1 --

Q.6c Type of change planned: renovation with no change in capacity

Q.6c(c). Total estimated cost [in dollars (omit cents)]?

Actual number is coded.

-1. Inap., Q.6 coded other than 1; change in capacity planned; NA

VAR 0040 RENOV NOCHG COMMITTED \$ MD=9
REF 0040 LOC 91 WIDTH 1 DK 2 COL 30

-- IF Q.6 IS CODED 1 --

Q.6c Type of change planned: renovation with no change in capacity

Q.6c(d). Have funds been committed?

- 1. Yes
2. No

9. Inap., Q.6 coded other than 1; change in capacity planned; NA

VAR 0041
REF 0041

CLOSE PART DECRS CAP-YR
LOC 92 WIDTH 2

MD=-1
DK 2 COL 31-32

-- IF Q.6 IS CODED 1 --

Q.6d Type of change planned: closing part of facility
with decrease in capacity

Q.6d(a). Anticipated year of change [CODE LAST TWO DIGITS
OF YEAR]?

78. 1978

82. 1982

-1. Inap., Q.6 coded other than 1; no planned closing;
NA

VAR 0042
REF 0042

CLOSE PART #BED(AD/RE)
LOC 94 WIDTH 5

MD=-1
DK 2 COL 33-37

-- IF Q.6 IS CODED 1 --

Q.6d Type of change planned: closing part of facility
with decrease in capacity

Q.6d(b). Number of beds to be removed?

Actual number is coded.

-01. Inap., Q.6 coded other than 1; no planned closing;
NA

VAR 0043
REF 0043

CLOSE ENTIRE FACILITY YR
LOC 99 WIDTH 2

MD=-1
DK 2 COL 38-39

--IF Q.6 IS CODED 1 --

(CONTINUED)

Q.6e Type of change planned: closing entire facility

Q.6e(a). Anticipated year of change [CODE LAST TWO DIGITS
OF YEAR]?

78. 1978

82. 1982

-1. Inap., Q.6 coded other than 1; no planned closing;
NA

VAR 0044
REF 0044

CLOSE FACIL # BED(AD/RE)
LOC 101 WIDTH 5

MD=-1
DK 2 COL 40-44

-- IF Q.6 IS CODED 1 --

Q.6e Type of change planned: closing entire facility

Q.6e(b). Number of beds to be removed?

Actual number is coded.

-001. Inap., Q.6 coded other than 1; no planned
closing; NA

VAR 0045
REF 0045

PLANS FOR NEW JAIL ?
LOC 106 WIDTH 1

MD=9
DK 2 COL 45

Q.7. Are there any definite plans to build or acquire a NEW
jail before December 31, 1982?

Include all plans which have received final administrative
approval, even though the necessary funds may not yet have
been committed.

(CONTINUED)

- 1. Yes
- 2. No
- 3. DK

- 9. NA

.....

VAR 0046 YR NEW JAIL OPEN MD=-1
 REF 0046 LOC 107 WIDTH 2 DK 2 COL 46-47

-- IF Q.7 IS CODED 1 --

Q.7a. What is the anticipated year in which the new jail will be opened [CODE LAST TWO DIGITS OF YEAR]?

78. 1978

82. 1982

-1. Inap., Q.7 coded other than 1; NA

.....

VAR 0047 # BEDS PLANNED IN NEW JL MD=-1
 REF 0047 LOC 109 WIDTH 5 DK 2 COL 48-52

-- IF Q.7 IS CODED 1 --

Q.7b. What is the number of beds planned for the new jail?

Actual number is coded.

-1. Inap., Q.7 coded other than 1; NA

VAR 0048 TOTAL \$ COST NEW JAIL MD=-1
 REF 0048 LOC 114 WIDTH 8 DK 2 COL 53-60

-- IF Q.7 IS CODED 1 --

Q.7c. What is the total estimated cost of the new jail [in dollars (omit cents)]?

Actual number is coded.

-1. Inap., Q.7 coded other than 1; NA

.....

VAR 0049 ANY \$ COMMITTED YET ? MD=9
 REF 0049 LOC 122 WIDTH 1 DK 2 COL 61

-- IF Q.7 IS CODED 1 --

Q.7d. Have any funds been committed [for the new jail] ?

- 1. Yes
- 2. No

9. Inap., Q.7 coded other than 1; NA

.....

VAR 0050 AVE 1 DAY POP TOTAL WKDY NO MISSING DATA CODES
 REF 0050 LOC 123 WIDTH 4 DK 2 COL 62-65

Q.8(a). What is the average one-day population on a typical weekday: [total]?

Actual number is coded.

VAR 0051 AVE 1 DAY POP MALE WKDY MD=-1
REF 0051 LOC 127 WIDTH 4 DK 2 COL 66-69

Q.8(b). What is the average one-day population on a typical weekday: [adult males]?

Actual number is coded.

-1. Inap., only females held at facility; NA

VAR 0052 AVE 1 DAY POP FEMALE WKDY MD=-1
REF 0052 LOC 131 WIDTH 4 DK 2 COL 70-73

Q.8(c). What is the average one-day population on a typical weekday: [adult females]?

Actual number is coded.

-1. Inap., only males held at facility; NA

VAR 0053 AVE 1 DAY POP JUV. WKDY MD=-1
REF 0053 LOC 135 WIDTH 3 DK 2 COL 74-76

Q.8(d). What is the average one-day population on a typical weekday: [juveniles]?

For the purposes of this survey, a juvenile is defined as a person subject to the juvenile court jurisdiction based on age and offense limitations as defined by State law. Persons above the statutory age limit for juveniles who are being held under special "youth" statutes, e.g., "youthful offenders" in California, "adolescents" or "minors" in New York, etc. should be considered as adults.

Actual number is coded.

(CONTINUED)

-1. Inap., only adults held at facility; NA

VAR 0054 AVE 1 DAY POP TOTAL WKED NO MISSING DATA CODES
REF 0054 LOC 138 WIDTH 4 DK 2 COL 77-80

Q.8(a). What is the average one-day population on a typical weekend: [total]?

Actual number is coded.

DECK IDENTIFICATION NUMBER IS '03' DK 3 COL 1-2

VAR 0001 ICPSR STUDY NUMBER-7737 NO MISSING DATA CODES
REF 0001 LOC 1 WIDTH 4 DK 3 COL 3-6

ICPSR Study Number-7737

7737. The ICPSR has attached this number as a unique data collection identification number.

VAR 0002 ICPSR EDITION NUMBER-3 NO MISSING DATA CODES
REF 0002 LOC 5 WIDTH 1 DK 3 COL 7

ICPSR Edition Number-3

The number identifying the release edition of the data collection.

3. Third ICPSR edition; summer, 1984 release

VAR 0003
REF 0003

ICPSR PART NUMBER-1
LOC 6 WIDTH 1

NO MISSING DATA CODES
DK 3 COL 8

ICPSR Part Number-1

The number identifying this part of a one-part data collection.

- 1. The entire data collection is contained in one part

VAR 0004
REF 0004

ICPSR SEQUENTIAL ID
LOC 7 WIDTH 4

NO MISSING DATA CODES
DK 3 COL 9-12

ICPSR Sequential Case Identification Number

The ICPSR has attached a sequential case identification number to uniquely identify each case.

VAR 0055
REF 0055

AVE 1 DAY POP MALE WKED
LOC 142 WIDTH 4

MD=-1
DK 3 COL 13-16

Q.8(b). What is the average one-day population on a typical weekend: [adult males]?

Actual number is coded.

- 1. Inap., only females held at facility; NA

VAR 0056
REF 0056

AVE 1 DAY POP FMALE WKED
LOC 146 WIDTH 4

MD=-1
DK 3 COL 17-20

Q.8(c). What is the average one-day population on a typical weekend: [adult females]?

Actual number is coded.

- 1. Inap., only males held at facility; NA

VAR 0057
REF 0057

AVE 1 DAY POP JUV. WKED
LOC 150 WIDTH 3

MD=-1
DK 3 COL 21-23

Q.8(d). What is the average one-day population on a typical weekend: [juveniles]?

For the purposes of this survey, a juvenile is defined as a person subject to the juvenile court jurisdiction based on age and offense limitations as defined by State law. Persons above the statutory age limit for juveniles who are being held under special "youth" statutes, e.g., "youthful offenders" in California, "adolescents" or "minors" in New York, etc. should be considered as adults.

Actual number is coded.

- 1. Inap., only adults held at facility; NA

VAR 0058
REF 0058

ADMISSIONS TYP WEEK
LOC 153 WIDTH 4

MD=-1
DK 3 COL 24-27

Q.10(a). What is the number of admissions in a typical week?

Does not include temporary moves such as court appearances.

(CONTINUED)

psychiatric examinations, brief furloughs, etc.

Actual number is coded.

-1. NA

VAR 0059 # RELEASES TYPICAL WEEK MD=-1
REF 0059 LOC 157 WIDTH 4 DK 3 COL 28-31

Q.10(b). What is the number of releases in a typical week?

Does not include temporary moves such as court appearances, psychiatric examinations, brief furloughs, etc.

Actual number is coded.

-1. NA

-- FOR Q.11a(a). - Q.11d(c)., (VARS.52-86), THE INMATE POPULATION AT THE FACILITY WAS FOR FEBRUARY 15, 1978, OR FOR THE DAY ON WHICH THE QUESTIONNAIRE WAS FILLED OUT --

VAR 0060 # INMT 2/15 TOTAL MD=-1
REF 0060 LOC 161 WIDTH 4 DK 3 COL 32-35

Q.11a(a). What was the total number of inmates in the facility on February 15, 1978?

Actual number is coded.

-1. NA

VAR 0061 # INMT 2/15 NOT ARR TOT MD=-1
REF 0061 LOC 165 WIDTH 4 DK 3 COL 36-39

Q.11b(1)(a). What was the [total] number of inmates in the facility on February 15, 1978:

Adults not yet arraigned?

Includes those who have been charged with another crime while on probation or parole.

Actual number is coded.

-1. Inap., another group held; NA

VAR 0062 # INMT 2/15 ARR/AWT TOT MD=-1
REF 0062 LOC 169 WIDTH 4 DK 3 COL 40-43

Q.11b(2)(a). What was the [total] number of inmates in the facility on February 15, 1978:

Adults arraigned and awaiting trial and/or persons being tried at this time?

Includes those who have been charged with another crime while on probation or parole.

Actual number is coded.

(CONTINUED)

-1. Inap., another group held; NA

.....

VAR 0063	# INMT 2/15 CVT/AWT TOT	MD=-1
REF 0063	LOC 173 WIDTH 4	DK 3 COL 44-47

Q.11b(3) (a). What was the [total] number of inmates in the facility on February 15, 1978:

Convicted adults awaiting sentence?

Actual number is coded.

-1. Inap., another group held; NA

.....

VAR 0064	# INMT 2/15 SENT<1Y TOT	MD=-1
REF 0064	LOC 177 WIDTH 4	DK 3 COL 48-51

Q.11b(4) (a). What was the [total] number of inmates in the facility on February 15, 1978:

Adults serving sentences of 1 year or less (whether or not they are appealing [their cases])?

Actual number is coded.

-1. Inap., another group held; NA

.....

VAR 0065	# INMT 2/15 SENT>1Y TOT	MD=-1
REF 0065	LOC 181 WIDTH 4	DK 3 COL 52-55

Q.11b(5) (a). What was the [total] number of inmates in the facility on February 15, 1978:

(CONTINUED)

Adults serving sentences of more than 1 year (whether or not they are appealing [their cases])?

Actual number is coded.

-1. Inap., another group held; NA

.....

VAR 0066	# INMT 2/15 PRB CHG TOT	MD=-1
REF 0066	LOC 185 WIDTH 3	DK 3 COL 56-58

Q.11b(6) (a). What was the [total] number of inmates in the facility on February 15, 1978:

Adults being held on probation or parole violation charges

Includes technical violators only; those who have been charged with another crime while on probation or parole should be reported under Q.11b(1) (a) [REF 53] or Q.11b(2) (a) [REF 54] above.

Actual number is coded.

-1. Inap., another group held; NA

.....

VAR 0067	# INMT 2/15 OTHER TOTAL	MD=-1
REF 0067	LOC 188 WIDTH 3	DK 3 COL 59-61

Q.11b(7) (a). What was the [total] number of inmates in the facility on February 15, 1978:

For other specified reasons?

Actual number is coded.

(CONTINUED)

-1. Inap., another group held; NA

VAR 0068 # INMT 2/15 ADLT MALE MD=-1
REF 0068 LOC 191 WIDTH 4 DK 3 COL 62-65

Q.11a(b). What was the number of inmates in the facility on February 15, 1978: [adult males]?

Actual number is coded.

-1. Inap., another group held; adult males not held at facility; NA

VAR 0069 # INMT 2/15 AD ML NO ARR MD=-1
REF 0069 LOC 195 WIDTH 4 DK 3 COL 66-69

Q.11b(1)(b). What was the number of inmates in the facility on February 15, 1978:

Adult [males] not yet arraigned?

Includes those who have been charged with another crime while on probation or parole.

Actual number is coded.

-1. Inap., another group held; adult males not held at facility; NA

VAR 0070 # INMT 2/15 AD ML ARR/AW MD=-1
REF 0070 LOC 199 WIDTH 4 DK 3 COL 70-73

Q.11b(2)(b). What was the number of inmates in the facility on February 15, 1978:

Adult [males] arraigned and awaiting trial and/or being tried at this time?

Includes those who have been charged with another crime while on probation or parole.

Actual number is coded.

-1. Inap., another group held; adult males not held at facility; NA

VAR 0071 # INMT 2/15 AD ML CON/AW MD=-1
REF 0071 LOC 203 WIDTH 4 DK 3 COL 74-77

Q.11b(3)(b). What was the number of inmates in the facility on February 15, 1978:

Convicted adult [males] awaiting sentence?

Actual number is coded.

-1. Inap., another group held; adult males not held at facility; NA

DECK IDENTIFICATION NUMBER IS '04' DK 4 COL 1-2

VAR 0001 ICPSR STUDY NUMBER-7737 NO MISSING DATA CODES
REF 0001 LOC 1 WIDTH 4 DK 4 COL 3-6

ICPSR Study Number-7737

7737. The ICPSR has attached this number as a unique data collection identification number.

VAR 0002 ICPSR EDITION NUMBER-3 NO MISSING DATA CODES
REF 0002 LOC 5 WIDTH 1 DK 4 COL 7

ICPSR Edition Number-3

The number identifying the release edition of the data collection.

3. Third ICPSR edition; summer, 1984 release

VAR 0003 ICPSR PART NUMBER-1 NO MISSING DATA CODES
REF 0003 LOC 6 WIDTH 1 DK 4 COL 8

ICPSR Part Number-1

The number identifying this part of a one-part data collection.

1. The entire data collection is contained in one part

VAR 0004 ICPSR SEQUENTIAL ID NO MISSING DATA CODES
REF 0004 LOC 7 WIDTH 4 DK 4 COL 9-12

ICPSR Sequential Case Identification Number

The ICPSR has attached a sequential case identification number to uniquely identify each case.

VAR 0072 # INMT 2/15 AD ML SEN<1Y MD=-1
REF 0072 LOC 207 WIDTH 4 DK 4 COL 13-16

Q.11b(4) (b). What was the number of inmates in the facility on February 15, 1978:

Adult [males] serving sentences of 1 year or less (whether or not they are appealing [their cases])?

Actual number is coded.

-1. Inap., another group held; adult males not held at facility; NA

VAR 0073 # INMT 2/15 AD ML SEN>1Y MD=-1
REF 0073 LOC 211 WIDTH 4 DK 4 COL 17-20

Q.11b(5) (b). What was the number of inmates in the facility on February 15, 1978:

Adult [males] serving sentences of more than 1 year (whether or not they are appealing [their cases])?

Actual number is coded.

-1. Inap., another group held; adult males not held at facility; NA

VAR 0074 # INMT 2/15 AD ML PROB C MD=-1
REF 0074 LOC 215 WIDTH 3 DK 4 COL 21-23

Q.11b(6) (b). What was the number of inmates in the facility on February 15, 1978:

Adult [males] being held on probation or parole violation charges

Includes technical violators only; those who have been charged with another crime while on probation or parole should be reported under Q.11b(1) (b) [REF 61] and Q.11b(2) (b) [REF 62] above.

Actual number is coded.

-1. Inap., another group held; adult males not held at facility; NA

VAR 0075 # INMT 2/15 AD ML OTHER MD=-1
REF 0075 LOC 218 WIDTH 3 DK 4 COL 24-26

Q.11b(7) (b). What was the number of inmates in the facility on February 15, 1978:

[Adult males held] for other specified reasons?

Actual number is coded.

-1. Inap., another group held; adult males not held at facility; NA

VAR 0076 # INMT 2/15 AD FML TOT MD=-1
REF 0076 LOC 221 WIDTH 4 DK 4 COL 27-30

Q.11a(c). What was the number of inmates in the facility on February 15, 1978: [adult females]?

Actual number is coded.

-1. Inap., another group held; adult females not held at facility; NA

VAR 0077 # INMT 2/15 AD FML N ARR MD=-1
REF 0077 LOC 225 WIDTH 4 DK 4 COL 31-34

Q.11b(1) (c). What was the number of inmates in the facility on February 15, 1978:

Adult [females] not yet arraigned?

Includes those who have been charged with another crime while on probation or parole.

Actual number is coded.

-1. Inap., another group held; adult females not held at facility; NA

VAR 0078 # INMT 2/15 AD FML AR/AW MD=-1
REF 0078 LOC 229 WIDTH 4 DK 4 COL 35-38

Q.11b(2) (c). What was the number of inmates in the facility on February 15, 1978:

Adult [females] arraigned and awaiting trial and/or persons being tried at this time?

(CONTINUED)

Includes those who have been charged with another crime while on probation or parole.

Actual number is coded.

-1. Inap., another group held; adult females not held at facility; NA

VAR 0079 # INMT 2/15 AD FML CN/AW MD=-1
REF 0079 LOC 233 WIDTH 4 DK 4 COL 39-42

Q.11b(3) (c). What was the number of inmates in the facility on February 15, 1978:

Convicted adult [females] awaiting sentence?

Actual number is coded.

-1. Inap., another group held; adult females not held at facility; NA

VAR 0080 # INMT 2/15 AD FML SN<1Y MD=-1
REF 0080 LOC 237 WIDTH 4 DK 4 COL 43-46

Q.11b(4) (c). What was the number of inmates in the facility on February 15, 1978:

Adult [females] serving sentences of 1 year or less (whether or not they are appealing [their cases])?

Actual number is coded.

(CONTINUED)

-1. Inap., another group held; adult females not held at facility; NA

VAR 0081 # INMT 2/15 AD FML SN>1Y MD=-1
REF 0081 LOC 241 WIDTH 4 DK 4 COL 47-50

Q.11b(5) (c). What was the number of inmates in the facility on February 15, 1978:

Adult [females] serving sentences of more than 1 year (whether or not they are appealing [their cases])?

Actual number is coded.

-1. Inap., another group held; adult females not held at facility; NA

VAR 0082 # INMT 2/15 AD FML PROB MD=-1
REF 0082 LOC 245 WIDTH 3 DK 4 COL 51-53

Q.11b(6) (c). What was the number of inmates in the facility on February 15, 1978:

Adult [females] being held on probation or parole violation charges

Includes technical violators only; those who have been charged with another crime while on probation or parole should be reported under Q.11b(1) (c) [REF 69] and Q.11b(2) (c) [REF 70] above.

Actual number is coded.

-1. Inap., another group held; adult females not held at facility; NA

VAR 0083 # INMT 2/15 AD FML OTHER MD=-1
REF 0083 LOC 248 WIDTH 3 DK 4 COL 54-56

Q.11b(7)(c). What was the number of inmates in the facility on February 15, 1978:

[Adult females held] for other specified reasons?

Actual number is coded.

- 1. Inap., another group held; adult females not held at facility; NA

.....
VAR 0084 # INMT 2/15 JUV ML TOTAL MD=-1
REF 0084 LOC 251 WIDTH 3 DK 4 COL 57-59

Q.11a(d). What was the total number of inmates in the facility on February 15, 1978: [juvenile males]?

For the purposes of this survey, a juvenile is defined as a person subject to the juvenile court jurisdiction based on age and offense limitations as defined by State law. Persons above the statutory age limit for juveniles who are being held under special "youth" statutes, e.g., "youthful offenders" in California, "adolescents" or "minors" in New York, etc. should be considered as adults.

Actual number is coded.

- 1. Inap., juvenile males not held at facility; juveniles not held at facility; NA

VAR 0085 # INMT 2/15 JUV FML TOT MD=-1
REF 0085 LOC 254 WIDTH 3 DK 4 COL 60-62

Q.11a(e). What was the total number of inmates in the facility on February 15, 1978: [juvenile females]?

For the purposes of this survey, a juvenile is defined as a person subject to the juvenile court jurisdiction based on age and offense limitations as defined by State law. Persons above the statutory age limit for juveniles who are being held under special "youth" statutes, e.g., "youthful offenders" in California, "adolescents" or "minors" in New York, etc. should be considered as adults.

Actual number is coded.

- 1. Inap., juvenile females not held at facility; juveniles not held at facility; NA

.....
VAR 0086 # INMT 2/15 HELD OTH FED MD=-1
REF 0086 LOC 257 WIDTH 3 DK 4 COL 63-65

Q.11c. Of the total number of inmates reported in Q.11a(a) [REF 52], how many were:

Q.11c(a). Inmates being held for FEDERAL authorities?

Actual number is coded.

- 1. Inap., inmate not being held for FEDERAL authorities; inmate not being held for other authorities; NA

VAR 0087 # INMT 2/15 HELD OVC FED MD=-1
REF 0087 LOC 260 WIDTH 3 DK 4 COL 66-68

Q.11d. Of those prisoners being held for FEDERAL authorities, how many were:

Q.11d(1) (a). Being held as a direct result of overcrowding in other institutions?

(i.e., inmates serving sentence or in an indefinite status pending availability of space in another institution)

Actual number is coded.

- 1. Inap., inmate held for another reason; inmate not being held for FEDERAL authorities; inmate not being held for other authorities; NA

VAR 0088 # INMT 2/15 HELD TRN FED MD=-1
REF 0088 LOC 263 WIDTH 3 DK 4 COL 69-71

Q.11d. Of those prisoners being held for FEDERAL authorities, how many were:

Q.11d(2) (a). Being held for other reasons?

(i.e., inmates whose early transfer is anticipated)

Actual number is coded.

- 1. Inap., inmate held for another reason; inmate not being held for FEDERAL authorities; inmate not being held for other authorities; NA

VAR 0089 # INMT 2/15 HELD OTH ST MD=-1
REF 0089 LOC 266 WIDTH 4 DK 4 COL 72-75

Q.11c. Of the total number of inmates reported in Q.11a(a) [REF 52], how many were:

Q.11c(b). Inmates being held for STATE authorities?

Actual number is coded.

- 1. Inap., inmate not being held for STATE authorities; inmate not being held for other authorities; NA

VAR 0090 # INMT 2/15 HELD OVC ST MD=-1
REF 0090 LOC 270 WIDTH 4 DK 4 COL 76-79

Q.11d. Of those prisoners being held for STATE authorities, how many were:

Q.11d(1) (b). Being held as a direct result of overcrowding in other institutions?

(i.e., inmates serving a sentence or in an indefinite status pending availability of space in another institution)

Actual number is coded.

- 1. Inap., inmate held for another reason; inmate not being held for STATE authorities; inmate not being held for other authorities; NA

DECK IDENTIFICATION NUMBER IS '05'

DK 5 COL 1- 2

VAR 0001 ICPSR STUDY NUMBER-7737 NO MISSING DATA CODES
REF 0001 LOC 1 WIDTH 4 DK 5 COL 3-6

ICPSR Study Number-7737

7737. The ICPSR has attached this number as a unique data collection identification number.

VAR 0002 ICPSR EDITION NUMBER-3 NO MISSING DATA CODES
REF 0002 LOC 5 WIDTH 1 DK 5 COL 7

ICPSR Edition Number-3

The number identifying the release edition of the data collection.

3. Third ICPSR edition; summer, 1984 release

VAR 0003 ICPSR PART NUMBER-1 NO MISSING DATA CODES
REF 0003 LOC 6 WIDTH 1 DK 5 COL 8

ICPSR Part Number-1

The number identifying this part of a one-part data collection.

1. The entire data collection is contained in one part

VAR 0004 ICPSR SEQUENTIAL ID NO MISSING DATA CODES
REF 0004 LOC 7 WIDTH 4 DK 5 COL 9-12

ICPSR Sequential Case Identification Number

The ICPSR has attached a sequential case identification number to uniquely identify each case.

VAR 0091 # INMT 2/15 HELD TRN ST MD=-1
REF 0091 LOC 274 WIDTH 3 DK 5 COL 13-15

Q.11d. Of those prisoners being held for STATE authorities, how many were:

Q.11d(2)(b). Being held for other reasons?

(i.e., inmates whose early transfer is anticipated)

Actual number is coded.

-1. Inap., inmate held for another reason; inmate not being held for STATE authorities; inmate not being held for other authorities; NA

VAR 0092 # INMT 2/15 HELD OTH CIT MD=-1
REF 0092 LOC 277 WIDTH 3 DK 5 COL 16-18

Q.11c. Of the total number of inmates reported in Q.11a(a) [REF 52], how many were:

Q.11c(c). Inmates being held for OTHER COUNTY OR CITY authorities?

Actual number is coded.

(CONTINUED)

-1. Inap., inmate not being held for OTHER COUNTY OR CITY authorities; inmate not being held for other authorities; NA

VAR 0093 # INMT 2/15 HELD OVC CIT MD=-1
REF 0093 LOC 280 WIDTH 3 DK 5 COL 19-21

Q.11d. Of those prisoners being held for OTHER COUNTY OR CITY authorities, how many were:

Q.11d(1)(c). Being held as a direct result of overcrowding in other institutions?

(i.e., inmates serving a sentence or in an indefinite status pending availability of space in another institution)

Actual number is coded.

-1. Inap., inmate held for another reason; inmate not being held for OTHER COUNTY OR CITY authorities; inmate not being held for other authorities; NA

VAR 0094 # INMT 2/15 HELD TRN CIT MD=-1
REF 0094 LOC 283 WIDTH 3 DK 5 COL 22-24

Q.11d. Of those prisoners being held for OTHER COUNTY OR CITY authorities, how many were:

Q.11d(2)(c). Being held for other reasons?

(i.e., inmates whose early transfer is anticipated)

Actual number is coded.

-1. Inap., inmate held for another reason; inmate not being held for OTHER COUNTY OR CITY authorities;

(CONTINUED)

inmate not being held for other authorities; NA

VAR 0095 # INMT DESGN/CAPACITY TOT MD=-1
REF 0095 LOC 286 WIDTH 4 DK 5 COL 25-28

Q.12. What is the total design/rated sleeping capacity of this jail?

Actual number is coded.

-1. NA

VAR 0096 # 1 INMT UNITS MD=-1
REF 0096 LOC 290 WIDTH 4 DK 5 COL 29-32

Q.13. For each category below, please give the number of cells, rooms, dormitories or other units where inmates spend the night. Also indicate the total number of inmates assigned to each type of unit TODAY [February 15, 1978 or the date on which the survey was filled out], and the average floor space in one unit of each type. Be sure all units are accounted for.

Q.13a. Cells or rooms with beds (For cell blocks, report the number and size of the individual units within the block)

Q.13a(1)(b) Units designed for ONE inmate: Number of units of each size

(e.g., if you have 4 units designed to hold 1 inmate each, the entry on line Q.13a(1)(b). would be "4")

Actual number is coded.

-1. Inap., other type(s) of units at facility; NA

VAR 0097 TOT # IN 1 INMT UNITS MD=-1
REF 0097 LOC 294 WIDTH 4 DK 5 COL 33-36

Q.13a(1) (c) Units designed for ONE inmate: Total number of inmates assigned to units of each size.

(e.g., if you have four units designed to hold 2 inmates each and they are filled today, the entry on line Q.13a(1) (c) would be "8").

[See Q.13a for complete question text.]

Actual number is coded.

-1. Inap., other type(s) of units at facility; NA

VAR 0098 AVE. SQ. FT./1 INMT UNIT MD=-1
REF 0098 LOC 298 WIDTH 3 DK 5 COL 37-39

Q.13a(1) (d). Units designed for ONE inmate: Average floor space of ONE unit of each size.

(e.g., 6 x 9 = 54 sq. ft.) Estimate if necessary.

[See Q.13a for complete question text.]

-1. Inap., other type(s) of units at facility; NA

VAR 0099 CENSUS CAP. 1 UNIT TYPE MD=-1
REF 0099 LOC 301 WIDTH 4 DK 5 COL 40-43

Q.13a(1) Units designed for ONE inmate: [Inmate capacity per cell type]

(CONTINUED)

CENSUS USE ONLY. This variable is derived by multiplying the number of inmates in a unit times the number of units. This gives the capacity of inmates for each type of cell or rooms with beds.

[See Q.13a for complete question text.]

-1. Inap., other type(s) of units at facility; NA

VAR 0100 # 2 INMT UNITS MD=-1
REF 0100 LOC 305 WIDTH 4 DK 5 COL 44-47

Q.13a(2) (b) Units designed for TWO inmates: Number of units of each size

(e.g., if you have 4 units designed to hold 2 inmates each, the entry on line Q.13a(2) (b) would be "4").

[See Q.13a for complete question text.]

Actual number is coded.

-1. Inap., other type(s) of units at facility; NA

VAR 0101 TOT # IN 2 INMT UNITS MD=-1
REF 0101 LOC 309 WIDTH 4 DK 5 COL 48-51

Q.13a(2) (c) Units designed for TWO inmates: Total number of inmates assigned to units of each size.

(e.g., if you have four units designed to hold 2 inmates each and they are filled today, the entry on line Q.13a(2) (c) would be "8").

(CONTINUED)

[See Q.13a for complete question text.]

Actual number is coded.

-1. Inap., other type(s) of units at facility; NA

.....

VAR 0102	AVE. SQ. FT./2 INMT UNIT	MD=-1
REF 0102	LOC 313 WIDTH 3	DK 5 COL 52-54

Q.13a(2) (d). Units designed for TWO inmates: Average floor space of TWO inmate units of each size

(e.g., 6 x 9 = 54 sq. ft.) Estimate if necessary.

[See Q.13a for complete question text.]

-1. Inap., other type(s) of units at facility; NA

.....

VAR 0103	CENSUS CAP. 2 UNIT TYPE	MD=-1
REF 0103	LOC 316 WIDTH 4	DK 5 COL 55-58

Q.13a(2) Units designed for TWO inmates: [Inmate capacity per cell type]

CENSUS USE ONLY. This variable is derived by multiplying the number of inmates in a unit times the number of units. This gives the capacity of inmates for each type of cell or rooms with beds.

[See Q.13a for complete question text.]

-1. Inap., other type(s) of units at facility; NA

VAR 0104	# 3 INMT UNITS	MD=-1
REF 0104	LOC 320 WIDTH 4	DK 5 COL 59-62

-- FORM CJ3 ONLY --

Q.13a(3) (b). Units designed for THREE inmates: Number of units of each size

(e.g., if you have 4 units designed to hold 2 inmates each, the entry on line Q.13a(2) (b). would be "4").

[See Q.13a for complete question text.]

-1. Inap., other type(s) of units at facility; facility filled out Form CJ4; NA

.....

VAR 0105	TOT # IN 3 INMT UNITS	MD=-1
REF 0105	LOC 324 WIDTH 4	DK 5 COL 63-66

-- FORM CJ3 ONLY --

Q.13a(3) (c). Units designed for THREE inmates: Total number of inmates assigned to units of each size.

(e.g., if you have four units designed to hold 2 inmates each and they are filled today, the entry on line Q.13a(2) (c) would be "8").

[See Q.13a for complete question text.]

Actual number is coded.

-1. Inap., other type(s) of units at facility; facility filled out Form CJ4; NA

VAR 0106 AVE. SQ. FT./3 UNIT TYPE MD=-1
REF 0106 LOC 328 WIDTH 3 DK 5 COL 67-69

-- FORM CJ3 ONLY --

Q.13a(3) (d). Units designed for THREE inmates: Average floor space of ONE unit of each size

(e.g., 6 x 9 = 54 sq. ft.) Estimate if necessary.

[See Q.13a for complete question text.]

Actual number is coded.

- 1. Inap., other type(s) of units at facility; facility filled out Form CJ4; NA

VAR 0107 CENSUS CAP. 3 UNIT TYPE MD=-1
REF 0107 LOC 331 WIDTH 4 DK 5 COL 70-73

-- FORM CJ3 ONLY --

Q.13a(3). Units designed for THREE inmates: [Inmate capacity per cell type]

CENSUS USE ONLY. This variable is derived by multiplying the number of inmates in a unit times the number of units. This gives the capacity of inmates for each type of cell or rooms with beds.

[See Q.13a for complete question text.]

- 1. Inap., other type(s) of units at facility; facility filled out Form CJ4; NA

VAR 0108 # 4 INMT UNITS MD=-1
REF 0108 LOC 335 WIDTH 4 DK 5 COL 74-77

-- FORM CJ3 ONLY --

Q.13a(4) (b). Units designed for FOUR inmates: Number of units of each size

(e.g., if you have 4 units designed to hold 2 inmates each, the entry on line Q.13a(4) (b) would be "4").

[See Q.13a for complete question text.]

Actual number is coded.

- 1. Inap., other type(s) of units at facility; facility filled out Form CJ4; NA

DECK IDENTIFICATION NUMBER IS '06' DK 6 COL 1- 2

VAR 0001 ICPSR STUDY NUMBER-7737 NO MISSING DATA CODES
REF 0001 LOC 1 WIDTH 4 DK 6 COL 3- 6

ICPSR Study Number-7737

7737. The ICPSR has attached this number as a unique data collection identification number.

VAR 0002 ICPSR EDITION NUMBER-3 NO MISSING DATA CODES
REF 0002 LOC 5 WIDTH 1 DK 6 COL 7

ICPSR Edition Number-3

The number identifying the release edition of the data

(CONTINUED)

collection.

3. Third ICPSR edition; summer, 1984 release

.....

VAR 0003	ICPSR PART NUMBER-1	NO MISSING DATA CODES
REF 0003	LOC 6 WIDTH 1	DK 6 COL 8

ICPSR Part Number-1

The number identifying this part of a one-part data collection.

1. The entire data collection is contained in one part

.....

VAR 0004	ICPSR SEQUENTIAL ID	NO MISSING DATA CODES
REF 0004	LOC 7 WIDTH 4	DK 6 COL 9-12

ICPSR Sequential Case Identification Number

The ICPSR has attached a sequential case identification number to uniquely identify each case.

.....

VAR 0109	TOT # IN 4 INMT UNITS	MD=-1
REF 0109	LOC 339 WIDTH 4	DK 6 COL 13-16

-- FORM CJ3 ONLY --

Q.13a(4) (c). Units designed for FOUR inmates: Total number of inmates assigned to units of each size.

(e.g., if you have four units designed to hold 2 inmates each and they are filled today, the entry on line Q.13a(4) (c) would be "8").

(CONTINUED)

[See Q.13a for complete question text.]

Actual number is coded.

- 1. Inap., other type(s) of units at facility; facility filled out Form CJ4; NA

.....

VAR 0110	AVE. SQ. FT./4 UNIT TYPE	MD=-1
REF 0110	LOC 343 WIDTH 3	DK 6 COL 17-19

-- FORM CJ3 ONLY --

Q.13a(4) (d). Units designed for FOUR inmates: Average floor space of ONE unit of each size

(e.g., 6 x 9 = 54 sq. ft.) Estimate if necessary.

[See Q.13a for complete question text.]

Actual number is coded.

- 1. Inap., other type(s) of units at facility; facility filled out Form CJ4; NA

.....

VAR 0111	CENSUS CAP. 4 UNIT TYPE	MD=-1
REF 0111	LOC 346 WIDTH 4	DK 6 COL 20-23

-- FORM CJ3 ONLY --

Q.13a(4) Units designed for FOUR inmates: [Inmate capacity per cell type]

CENSUS USE ONLY. This variable is derived by multiplying the number of inmates in a unit times the number of units. This gives the capacity of inmates for each type of cell or rooms with beds.

(CONTINUED)

[See Q.13a for complete question text.]

Actual number is coded.

-1. Inap., facility filled out Form CJ4

.....

VAR 0112	UNIT SIZE CJ3>5/CJ4>3 1M	MD=-1
REF 0112	LOC 350 WIDTH 2	DK 6 COL 24-25

-- FORM CJ3 --

Q.13a(5)a. Units designed for FIVE OR MORE inmates:
Cells/Dormitories:

Specify size; (e.g., 5-man, 6-man, etc.): [First mention]

-- FORM CJ4 --

Q.13a(3)a. Units designed for THREE OR MORE inmates:
Cells/Dormitories:

Specify size; (e.g., 3-man, 4-man, etc.): [First mention]

The distinction between "cells" and "dormitories" was
dropped as there is no universal definition for either.

[See Q.13a for complete question text.]

Actual number is coded.

-1. Inap., other type(s) of units in facility; NA

.....

VAR 0113	#INMT UNT CJ3>5/CJ4>3 1M	MD=-1
REF 0113	LOC 352 WIDTH 3	DK 6 COL 26-28

--FORM CJ3--

(CONTINUED)

Q.13a(5)a(b). Units designed for FIVE OR MORE inmates:
Cells/Dormitories:

Number of units of each size: [First mention]

-- FORM CJ4 --

Q.13a(3)a(b). Units designed for THREE OR MORE inmates:
Cells/Dormitories:

Number of units of each size: [First mention]

(e.g., if you have 4 units designed to hold 2 inmates each,
the entry would be "4").

[See Q.13a for complete question text.]

Actual number is coded.

-1. Inap., other type(s) of units in facility; NA

.....

VAR 0114	TOT # IN CJ3>5/CJ4>3 1M	MD=-1
REF 0114	LOC 355 WIDTH 4	DK 6 COL 29-32

-- FORM CJ3 --

Q.13a(5)a(c). Units designed for FIVE OR MORE inmates:
Cells/Dormitories:Total number of inmates assigned to units of each size
TODAY: [First mention]

-- FORM CJ4 --

Q.13a(3)a(c). Units designed for THREE OR MORE inmates:
Cells/Dormitories:Total number of inmates assigned to units of each size
TODAY: [First mention]

(e.g., if you have four units designed to hold 2 inmates

(CONTINUED)

each and they are filled today, the entry would be "8").

[See Q.13a for complete question text.]

Actual number is coded.

-1. Inap., other type(s) of units in facility; NA

VAR 0115 AVE SQ FT CJ3>5/CJ4>3 1M MD=-1
REF 0115 LOC 359 WIDTH 4 DK 6 COL 33-36

-- FORM CJ3 --

Q.13a(5)(d). Units designed for FIVE OR MORE inmates:
Cells/Dormitories:

Average floor space of ONE unit of each size: [First
mention]

-- FORM CJ4 --

Q.13a(3)(d). Units designed for THREE OR MORE inmates:
Cells/Dormitories:

Average floor space of ONE unit of each size: [First
mention]

(e.g., 6 x 9 = 54 sq. ft.) Estimate if necessary.

[See Q.13a for complete question text.]

Actual number is coded.

-1. Inap., other type(s) of units in facility; NA

VAR 0116 CENSS CAP CJ3>5/CJ4>3 1M MD=-1
REF 0116 LOC 363 WIDTH 4 DK 6 COL 37-40

-- FORM CJ3 --

Q.13a(5) Units designed for FIVE OR MORE inmates:
Cells/Dormitories:

[Inmate capacity per cell type]: [First mention]

-- FORM CJ4 --

Q.13a(3) Units designed for THREE OR MORE inmates:
Cells/Dormitories:

[Inmate capacity per cell type]: [First mention]

CENSUS USE ONLY. This variable is derived by multiplying
the number of inmates in a unit times the number of units.
This gives the capacity of inmates for each type of cell or
rooms with beds.

[See Q.13a for complete question text.]

Actual number is coded.

-1. Inap., other type(s) of units in facility; NA

VAR 0117 UNIT SIZE CJ3>5/CJ4>3 2M MD=-1
REF 0117 LOC 367 WIDTH 2 DK 6 COL 41-42

-- FORM CJ3 --

Q.13a(5)a. Units designed for FIVE OR MORE inmates:
Cells/Dormitories:

Specify size; (e.g., 5-man, 6-man, etc.): [Second mention]

-- FORM CJ4 --

Q.13a(3)a. Units designed for THREE OR MORE inmates:

(CONTINUED)

Cells/Dormitories:

Specify size; (e.g., 3-man, 4-man, etc.): [Second mention]

The distinction between "cells" and "dormitories" was dropped as there is no universal definition for either.

[See Q.13a for complete question text.]

Actual number is coded.

-1. Inap., other type(s) of units in facility; NA

VAR 0118 #INMT UNT CJ3>5/CJ4>3 2M MD=-1
REF 0118 LOC 369 WIDTH 3 DK 6 COL 43-45

-- FORM CJ3 --

Q.13a(5)a(b). Units designed for FIVE OR MORE inmates:
Cells/Dormitories:

Number of units of each size: [Second mention]

-- FORM CJ4 --

Q.13a(3)a(b). Units designed for THREE OR MORE inmates:
Cells/Dormitories:

Number of units of each size: [Second mention]

(e.g., if you have 4 units designed to hold 2 inmates each,
the entry would be "4").

[See Q.13a for complete question text.]

Actual number is coded.

-1. Inap., other type(s) of units in facility; NA

VAR 0119 TOT # IN CJ3>5/CJ4>3 2M MD=-1
REF 0119 LOC 372 WIDTH 4 DK 6 COL 46-49

-- FORM CJ3 --

Q.13a(5)a(c). Units designed for FIVE OR MORE inmates:
Cells/Dormitories:

Total number of inmates assigned to units of each size
TODAY: [Second mention]

-- FORM CJ4 --

Q.13a(3)a(c). Units designed for THREE OR MORE inmates:
Cells/Dormitories:

Total number of inmates assigned to units of each size
TODAY: [Second mention]

(e.g., if you have four units designed to hold 2 inmates
each and they are filled today, the entry would be "8").

[See Q.13a for complete question text.]

Actual number is coded.

-1. Inap., other type(s) of units in facility; NA

VAR 0120 AVE SQ FT CJ3>5/CJ4>3 2M MD=-1
REF 0120 LOC 376 WIDTH 4 DK 6 COL 50-53

-- FORM CJ3 --

Q.13a(5)(d). Units designed for FIVE OR MORE inmates:
Cells/Dormitories:

Average floor space of ONE unit of each size: [Second
mention]

-- FORM CJ4 --

(CONTINUED)

Q.13a(3)(d). Units designed for THREE OR MORE inmates:
Cells/Dormitories:

Average floor space of ONE unit of each size: [Second
mention]

(e.g., 6 x 9 = 54 sq. ft.) Estimate if necessary.

[See Q.13a for complete question text.]

Actual number is coded.

-1. Inap., other type(s) of units in facility; NA

.....
VAR 0121 CENSS CAP CJ3>5/CJ4>3 2M MD=-1
REF 0121 LOC 380 WIDTH 4 DK 6 COL 54-57

-- FORM CJ3 --

Q.13a(5) Units designed for FIVE OR MORE inmates:
Cells/Dormitories:

[Inmate capacity per cell type]: [Second mention]

-- FORM CJ4 --

Q.13a(3) Units designed for THREE OR MORE inmates:
Cells/Dormitories:

[Inmate capacity per cell type]: [Second mention]

CENSUS USE ONLY. This variable is derived by multiplying
the number of inmates in a unit times the number of units.
This gives the capacity of inmates for each type of cell or
rooms with beds.

[See Q.13a for complete question text.]

Actual number is coded.

-1. Inap., other type(s) of units in facility; NA

VAR 0122 UNIT SIZE CJ3>5/CJ4>3 3M MD=-1
REF 0122 LOC 384 WIDTH 2 DK 6 COL 58-59

-- FORM CJ3 --

Q.13a(5)a. Units designed for FIVE OR MORE inmates:
Cells/Dormitories:

Specify size; (e.g., 5-man, 6-man, etc.): [Third mention]

-- FORM CJ4 --

Q.13a(3)a. Units designed for THREE OR MORE inmates:
Cells/Dormitories:

Specify size; (e.g., 3-man, 4-man, etc.): [Third mention]

The distinction between "cells" and "dormitories" was
dropped as there is no universal definition for either.

[See Q.13a for complete question text.]

Actual number is coded.

-1. Inap., other type(s) of units in facility; NA

.....
VAR 0123 #INMT UNT CJ3>5/CJ4>3 3M MD=-1
REF 0123 LOC 386 WIDTH 3 DK 6 COL 60-62

-- FORM CJ3 --

Q.13a(5)a(b). Units designed for FIVE OR MORE inmates:
Cells/Dormitories:

Number of units of each size: [Third mention]

-- FORM CJ4 --

Q.13a(3)a(b). Units designed for THREE OR MORE inmates:
Cells/Dormitories:

Number of units of each size: [Third mention]

(CONTINUED)

(e.g., if you have 4 units designed to hold 2 inmates each, the entry would be "4").

[See Q.13a for complete question text.]

Actual number is coded.

-1. Inap., other type(s) of units in facility; NA

VAR 0124 TOT # IN CJ3>5/CJ4>3 3M MD=-1
REF 0124 LOC 389 WIDTH 4 DK 6 COL 63-66

-- FORM CJ3 --

Q.13a(5)a(c). Units designed for FIVE OR MORE inmates:
Cells/Dormitories:

Total number of inmates assigned to units of each size
TODAY: [Third mention]

-- FORM CJ4 --

Q.13a(3)a(c). Units designed for THREE OR MORE inmates:
Cells/Dormitories:

Total number of inmates assigned to units of each size
TODAY: [Third mention]

(e.g., if you have four units designed to hold 2 inmates each and they are filled today, the entry would be "8").

[See Q.13a for complete question text.]

Actual number is coded.

-1. Inap., other type(s) of units in facility; NA

VAR 0125 AVE SQ FT CJ3>5/CJ4>3 3M MD=-1
REF 0125 LOC 393 WIDTH 4 DK 6 COL 67-70

-- FORM CJ3 --

Q.13a(5)(d). Units designed for FIVE OR MORE inmates:
Cells/Dormitories:

Average floor space of ONE unit of each size: [Third
mention]

-- FORM CJ4 --

Q.13a(3)(d). Units designed for THREE OR MORE inmates:
Cells/Dormitories:

Average floor space of ONE unit of each size: [Third
mention]

(e.g., 6 x 9 = 54 sq. ft.) Estimate if necessary.

[See Q.13a for complete question text.]

Actual number is coded.

-1. Inap., other type(s) of units in facility; NA

VAR 0126 CENSS CAP CJ3>5/CJ4>3 3M MD=-1
REF 0126 LOC 397 WIDTH 4 DK 6 COL 71-74

-- FORM CJ3 --

Q.13a(5) Units designed for FIVE OR MORE inmates:
Cells/Dormitories:

[Inmate capacity per cell type]: [Third mention]

-- FORM CJ4 --

Q.13a(3) Units designed for THREE OR MORE inmates:
Cells/Dormitories:

(CONTINUED)

[Inmate capacity per cell type]: [Third mention]

CENSUS USE ONLY. This variable is derived by multiplying the number of inmates in a unit times the number of units. This gives the capacity of inmates for each type of cell or rooms with beds.

[See Q.13a for complete question text.]

Actual number is coded.

-1. Inap., other type(s) of units in facility; NA

.....
VAR 0127 UNIT SIZE CJ3>5/CJ4>3 4M MD=-1
REF 0127 LOC 401 WIDTH 3 DK 6 COL 75-77

-- FORM CJ3 --

Q.13a(5)a. Units designed for FIVE OR MORE inmates:
Cells/Dormitories:

Specify size; (e.g., 5-man, 6-man, etc.): [Fourth mention]

-- FORM CJ4 --

Q.13a(3)a. Units designed for THREE OR MORE inmates:
Cells/Dormitories:

Specify size; (e.g., 3-man, 4-man, etc.): [Fourth mention]

The distinction between "cells" and "dormitories" was dropped as there is no universal definition for either.

[See Q.13a for complete question text.]

Actual number is coded.

-1. Inap., other type(s) of units in facility; NA

VAR 0128 #INMT UNT CJ3>5/CJ4>3 4M MD=-1
REF 0128 LOC 404 WIDTH 3 DK 6 COL 78-80

-- FORM CJ3 --

Q.13a(5)a(b). Units designed for FIVE OR MORE inmates:
Cells/Dormitories:

Number of units of each size: [Fourth mention]

-- FORM CJ4 --

Q.13a(3)a(b). Units designed for THREE OR MORE inmates:
Cells/Dormitories:

Number of units of each size: [Fourth mention]

(e.g., if you have 4 units designed to hold 2 inmates each, the entry would be "4").

[See Q.13a for complete question text.]

Actual number is coded.

-1. Inap., other type(s) of units in facility; NA

DECK IDENTIFICATION NUMBER IS '07' DK 7 COL 1-2

.....
VAR 0001 ICPSR STUDY NUMBER-7737 NO MISSING DATA CODES
REF 0001 LOC 1 WIDTH 4 DK 7 COL 3-6

ICPSR Study Number-7737

7737. The ICPSR has attached this number as a unique data collection identification number.

VAR 0002 ICPSR EDITION NUMBER-3 NO MISSING DATA CODES
REF 0002 LOC 5 WIDTH 1 DK 7 COL 7

ICPSR Edition Number-3

The number identifying the release edition of the data collection.

3. Third ICPSR edition; summer, 1984 release

VAR 0003 ICPSR PART NUMBER-1 NO MISSING DATA CODES
REF 0003 LOC 6 WIDTH 1 DK 7 COL 8

ICPSR Part Number-1

The number identifying this part of a one-part data collection.

1. The entire data collection is contained in one part

VAR 0004 ICPSR SEQUENTIAL ID NO MISSING DATA CODES
REF 0004 LOC 7 WIDTH 4 DK 7 COL 9-12

ICPSR Sequential Case Identification Number

The ICPSR has attached a sequential case identification number to uniquely identify each case.

VAR 0129 TOT # IN CJ3>5/CJ4>3 4M MD=-1
REF 0129 LOC 407 WIDTH 4 DK 7 COL 13-16

-- FORM CJ3 --

(CONTINUED)

Q.13a(5)a(c). Units designed for FIVE OR MORE inmates:
Cells/Dormitories:

Total number of inmates assigned to units of each size
TODAY: [Fourth mention]

-- FORM CJ4 --

Q.13a(3)a(c). Units designed for THREE OR MORE inmates:
Cells/Dormitories:

Total number of inmates assigned to units of each size
TODAY: [Fourth mention]

(e.g., if you have four units designed to hold 2 inmates
each and they are filled today, the entry would be "8").

[See Q.13a for complete question text.]

Actual number is coded.

- 1. Inap., other type(s) of units in facility; NA

VAR 0130 AVE SQ FT CJ3>5/CJ4>3 4M MD=-1
REF 0130 LOC 411 WIDTH 4 DK 7 COL 17-20

-- FORM CJ3 --

Q.13a(5)(d). Units designed for FIVE OR MORE inmates:
Cells/Dormitories:

Average floor space of ONE unit of each size: [Fourth
mention]

-- FORM CJ4 --

Q.13a(3)(d). Units designed for THREE OR MORE inmates:
Cells/Dormitories:

Average floor space of ONE unit of each size: [Fourth
mention]

(CONTINUED)

(e.g., 6 x 9 = 54 sq. ft.) Estimate if necessary.

[See Q.13a for complete question text.]

Actual number is coded.

-1. Inap., other type(s) of units in facility; NA

VAR 0131 CENSS CAP CJ3>5/CJ4>3 4M MD=-1
REF 0131 LOC 415 WIDTH 4 DK 7 COL 21-24

-- FORM CJ3 --

Q.13a(5) Units designed for FIVE OR MORE inmates:
Cells/Dormitories:

[Inmate capacity per cell type]: [Fourth mention]

-- FORM CJ4 --

Q.13a(3) Units designed for THREE OR MORE inmates:
Cells/Dormitories:

[Inmate capacity per cell type]: [Fourth mention]

CENSUS USE ONLY. This variable is derived by multiplying the number of inmates in a unit times the number of units. This gives the capacity of inmates for each type of cell or rooms with beds.

[See Q.13a for complete question text.]

Actual number is coded.

-1. Inap., other type(s) of units in facility; NA

VAR 0132 UNIT SIZE CJ3>5/CJ4>3 5M MD=-1
REF 0132 LOC 419 WIDTH 3 DK 7 COL 25-27

-- FORM CJ3 --

Q.13a(5b)a. Units designed for FIVE OR MORE inmates:
Cells/Dormitories:

Specify size; (e.g., 10-bed, 20-bed, etc.): [Fifth mention]

-- FORM CJ4 --

Q.13a(3b)a. Units designed for THREE OR MORE inmates:

Specify size; (e.g., 10-bed, 20-bed, etc.): [Fifth mention]

The distinction between "cells" and "dormitories" was dropped as there is no universal definition for either.

[See Q.13a for complete question text.]

Actual number is coded.

-1. Inap., other type(s) of units in facility; NA

VAR 0133 #INMT UNT CJ3>5/CJ4>3 5M MD=-1
REF 0133 LOC 422 WIDTH 3 DK 7 COL 28-30

-- FORM CJ3 --

Q.13a(5b)b. Units designed for FIVE OR MORE inmates:
Cells/Dormitories:

Number of units of each size: [Fifth mention]

-- FORM CJ4 --

Q.13a(3b)b. Units designed for THREE OR MORE inmates:
Cells/Dormitories:

Number of units of each size: [Fifth mention]

(CONTINUED)

(e.g., if you have 4 units designed to hold 2 inmates each, the entry would be "4").

[See Q.13a for complete question text.]

Actual number is coded.

-1. Inap., other type(s) of units in facility; NA

VAR 0134 TOT # IN CJ3>5/CJ4>3 5M MD=-1
REF 0134 LOC 425 WIDTH 4 DK 7 COL 31-34

-- FORM CJ3 --

Q.13a(5b)c. Units designed for FIVE OR MORE inmates:
Cells/Dormitories:

Total number of inmates assigned to units of each size
TODAY: [Fifth mention]

-- FORM CJ4 --

Q.13a(3b)c. Units designed for THREE OR MORE inmates:
Cells/Dormitories:

Total number of inmates assigned to units of each size
TODAY: [Fifth mention]

(e.g., if you have four units designed to hold 2 inmates each and they are filled today, the entry would be "8").

[See Q.13a for complete question text.]

Actual number is coded.

-1. Inap., other type(s) of units in facility; NA

VAR 0135 AVE SQ FT CJ3>5/CJ4>3 5M MD=-1
REF 0135 LOC 429 WIDTH 4 DK 7 COL 35-38

-- FORM CJ3 --

Q.13a(5b)d. Units designed for FIVE OR MORE inmates:
Cells/Dormitories:

Average floor space of ONE unit of each size: [Fifth
mention]

-- FORM CJ4 --

Q.13a(3b)d. Units designed for THREE OR MORE inmates:
Cells/Dormitories:

Average floor space of ONE unit of each size: [Fifth
mention]

(e.g., 6 x 9 = 54 sq. ft.) Estimate if necessary.

[See Q.13a for complete question text.]

Actual number is coded.

-1. Inap., other type(s) of units in facility; NA

VAR 0136 CENSS CAP CJ3>5/CJ4>3 5M MD=-1
REF 0136 LOC 433 WIDTH 4 DK 7 COL 39-42

-- FORM CJ3 --

Q.13a(5b). Units designed for FIVE OR MORE inmates:
Cells/Dormitories:

[Inmate capacity per cell type]: [Fifth mention]

-- FORM CJ4 --

Q.13a(3b). Units designed for THREE OR MORE inmates:
Cells/Dormitories:

(CONTINUED)

[Inmate capacity per cell type]: [Fifth mention]

CENSUS USE ONLY. This variable is derived by multiplying the number of inmates in a unit times the number of units. This gives the capacity of inmates for each type of cell or rooms with beds.

[See Q.13a for complete question text.]

Actual number is coded.

-1. Inap., other type(s) of units in facility; NA

VAR 0137 UNIT SIZE CJ3>5/CJ4>3 6M MD=-1
REF 0137 LOC 437 WIDTH 3 DK 7 COL 43-45

-- FORM CJ3 --

Q.13a(5b)a. Units designed for FIVE OR MORE inmates:
Cells/Dormitories:

Specify size; (e.g., 10-bed, 20-bed, etc.): [Sixth mention]

-- FORM CJ4 --

Q.13a(3b)a. Units designed for THREE OR MORE inmates:
Cells/Dormitories:

Specify size; (e.g., 10-bed, 20-bed, etc.): [Sixth mention]

The distinction between "cells" and "dormitories" was dropped as there is no universal definition for either.

[See Q.13a for complete question text.]

Actual number is coded.

-1. Inap., other type(s) of units in facility; NA

VAR 0138 #INMT UNT CJ3>5/CJ4>3 6M MD=-1
REF 0138 LOC 440 WIDTH 3 DK 7 COL 46-48

-- FORM CJ3 --

Q.13a(5b)b. Units designed for FIVE OR MORE inmates:
Cells/Dormitories:

Number of units of each size: [Sixth mention]

-- FORM CJ4 --

Q.13a(3b)b. Units designed for THREE OR MORE inmates:
Cells/Dormitories:

Number of units of each size: [Sixth mention]

(e.g., if you have 4 units designed to hold 2 inmates each, the entry would be "4").

[See Q.13a for complete question text.]

Actual number is coded.

-1. Inap., other type(s) of units in facility; NA

VAR 0139 TOT # IN CJ3>5/CJ4>3 6M MD=-1
REF 0139 LOC 443 WIDTH 4 DK 7 COL 49-52

-- FORM CJ3 --

Q.13a(5b)c. Units designed for FIVE OR MORE inmates:
Cells/Dormitories:

Total number of inmates assigned to units of each size
TODAY: [Sixth mention]

-- FORM CJ4 --

Q.13a(3b)c. Units designed for THREE OR MORE inmates:
Cells/Dormitories:

CONTINUED

1 OF 2

(CONTINUED)

Total number of inmates assigned to units of each size
TODAY: [Sixth mention]

(e.g., if you have four units designed to hold 2 inmates
each and they are filled today, the entry would be "8").

[See Q.13a for complete question text.]

Actual number is coded.

-1. Inap., other type(s) of units in facility; NA

.....
VAR 0140 AVE SQ FT CJ3>5/CJ4>3 6M MD=-1
REF 0140 LOC 447 WIDTH 4 DK 7 COL 53-56

-- FORM CJ3 --

Q.13a(5b)d. Units designed for FIVE OR MORE inmates:
Cells/Dormitories:

Average floor space of ONE unit of each size: [Sixth
mention]

-- FORM CJ4 --

Q.13a(3b)d. Units designed for THREE OR MORE inmates:
Cells/Dormitories:

Average floor space of ONE unit of each size: [Sixth
mention]

(e.g., 6 x 9 = 54 sq. ft.) Estimate if necessary.

[See Q.13a for complete question text.]

Actual number is coded.

-1. Inap., other type(s) of units in facility; NA

VAR 0141 CENSS CAP CJ3>5/CJ4>3 6M MD=-1
REF 0141 LOC 451 WIDTH 4 DK 7 COL 57-60

-- FORM CJ3 --

Q.13a(5b). Units designed for FIVE OR MORE inmates:
Cells/Dormitories:

[Inmate capacity per cell type]: [Sixth mention]

-- FORM CJ4 --

Q.13a(3b). Units designed for THREE OR MORE inmates:
Cells/Dormitories:

[Inmate capacity per cell type]: [Sixth mention]

CENSUS USE ONLY. This variable is derived by multiplying
the number of inmates in a unit times the number of units.
This gives the capacity of inmates for each type of cell or
rooms with beds.

[See Q.13a for complete question text.]

Actual number is coded.

-1. Inap., other type(s) of units in facility; NA

.....
VAR 0142 SIZE OF OTHR (#1) MD=-1
REF 0142 LOC 455 WIDTH 3 DK 7 COL 61-63

Q.13 For each category below, please give the number of
cells, rooms, dormitories or other units where inmates spend
the night. Also indicate the total number of inmates
assigned to each type of unit TODAY [February 15, 1978 or
the date on which the survey was filled out], and the
average floor space in one unit of each type. Be sure all
units and inmates are accounted for.

Q.13b(1)a. Other units with beds; e.g., trustees' cells,
isolation cells, infirmary, etc.:

(CONTINUED)

Specify size; (e.g., 1-man trustee, 2-man trustee, etc.):
[First mention]

Actual number is coded.

-1. Inap., other type(s) of units in facility; NA

VAR 0143	# INMT UNITS (#1)	MD=-1
REF 0143	LOC 458 WIDTH 2	DK 7 COL 64-65

Q.13b(1)b. Other units with beds; e.g., trustees' cells, isolation cells, infirmary, etc.:

Number of units of each size: [First mention]

(e.g., if you have 4 units designed to hold 2 inmates each, the entry would be "4").

Actual number is coded.

-1. Inap., other type(s) of units in facility; NA

VAR 0144	TOT # IN UNITS (#1)	MD=-1
REF 0144	LOC 460 WIDTH 3	DK 7 COL 66-68

Q.13b(1)c. Other units with beds; e.g., trustees' cells, isolation cells, infirmary, etc.:

Total number of inmates assigned to units of each size TODAY: [First mention]

(e.g., if you have four units designed to hold 2 inmates each and they are filled today, the entry would be "8").

Actual number is coded.

-1. Inap., other type(s) of units in facility; NA

VAR 0145	AVE. SQ. FT./U T (#1)	MD=-1
REF 0145	LOC 463 WIDTH 4	DK 7 COL 69-72

Q.13b(1)d. Other units with beds; e.g., trustees' cells, isolation cells, infirmary, etc.:

Average floor space of ONE unit of each size: [First mention]

(e.g., 6 x 9 = 54 sq. ft.) Estimate if necessary.

Actual number is coded.

-1. Inap., other type(s) of units in facility; NA

VAR 0146	CENSUS CAP. OTHR (#1)	MD=-1
REF 0146	LOC 467 WIDTH 3	DK 7 COL 73-75

Q.13b(1). Other units with beds; e.g., trustees' cells, isolation cells, infirmary, etc.:

[Inmate capacity per cell type]: [First mention]

CENSUS USE ONLY. This variable is derived by multiplying the number of inmates in a unit times the number of units. This gives the capacity of inmates for each type of cell or rooms with beds.

Actual number is coded.

-1. Inap., other type(s) of units in facility; NA

VAR 0147	SIZE OF OTHR (#2)	MD=-1
REF 0147	LOC 470 WIDTH 3	DK 7 COL 76-78

Q.13b(1)a. Other units with beds; e.g., trustees' cells, isolation cells, infirmary, etc.:

Specify size; (e.g., 1-man trustee, 2-man trustee, etc.):

(CONTINUED)

[Second mention]

Actual number is coded.

- 1. Inap., other type(s) of units in facility; NA

VAR 0148 # INMT UNITS (#2) MD=-1
REF 0148 LOC 473 WIDTH 2 DK 7 COL 79-80

Q.13b(1)b. Other units with beds; e.g., trustees' cells, isolation cells, infirmary, etc.:

Number of units of each size: [Second mention]

(e.g., if you have 4 units designed to hold 2 inmates each, the entry would be "4").

Actual number is coded.

- 1. Inap., other type(s) of units in facility; NA

DECK IDENTIFICATION NUMBER IS '08' DK 8 COL 1- 2

VAR 0001 ICPSR STUDY NUMBER-7737 NO MISSING DATA CODES
REF 0001 LOC 1 WIDTH 4 DK 8 COL 3- 6

ICPSR Study Number-7737

7737. The ICPSR has attached this number as a unique data collection identification number.

VAR 0002 ICPSR EDITION NUMBER-3 NO MISSING DATA CODES
REF 0002 LOC 5 WIDTH 1 DK 8 COL 7

ICPSR Edition Number-3

The number identifying the release edition of the data collection.

3. Third ICPSR edition; summer, 1984 release

VAR 0003 ICPSR PART NUMBER-1 NO MISSING DATA CODES
REF 0003 LOC 6 WIDTH 1 DK 8 COL 8

ICPSR Part Number-1

The number identifying this part of a one-part data collection.

1. The entire data collection is contained in one part

VAR 0004 ICPSR SEQUENTIAL ID NO MISSING DATA CODES
REF 0004 LOC 7 WIDTH 4 DK 8 COL 9-12

ICPSR Sequential Case Identification Number

The ICPSR has attached a sequential case identification number to uniquely identify each case.

VAR 0149 TOT # IN UNITS (#2) MD=-1
REF 0149 LOC 475 WIDTH 3 DK 8 COL 13-15

Q.13b(1)c. Other units with beds; e.g., trustees' cells,

(CONTINUED)

isolation cells, infirmary, etc.:

Total number of inmates assigned to units of each size TODAY: [Second mention]

(e.g., if you have four units designed to hold 2 inmates each and they are filled today, the entry would be "8").

Actual number is coded.

-1. Inap., other type(s) of units in facility; NA

VAR 0150 AVE. SQ. FT./U T (#2) MD=-1
REF 0150 LOC 478 WIDTH 4 DK 8 COL 16-19

Q.13b(1)d. Other units with beds; e.g., trustees' cells, isolation cells, infirmary, etc.:

Average floor space of ONE unit of each size: [Second mention]

(e.g., 6 x 9 = 54 sq. ft.) Estimate if necessary.

Actual number is coded.

-1. Inap., other type(s) of units in facility; NA

VAR 0151 CENSUS CAP. OTHR (#2) MD=-1
REF 0151 LOC 482 WIDTH 3 DK 8 COL 20-22

Q.13b(1). Other units with beds; e.g., trustees' cells, isolation cells, infirmary, etc.:

[Inmate capacity per cell type]: [Second mention]

CENSUS USE ONLY. This variable is derived by multiplying the number of inmates in a unit times the number of units. This gives the capacity of inmates for each type of cell or rooms with beds.

(CONTINUED)

Actual number is coded.

-1. Inap., other type(s) of units in facility; NA

VAR 0152 SIZE OF OTHR (#3) MD=-1
REF 0152 LOC 485 WIDTH 3 DK 8 COL 23-25

Q.13b(1)a. Other units with beds; e.g., trustees' cells, isolation cells, infirmary, etc.:

Specify size; (e.g., 1-man trustee, 2-man trustee, etc.): [Third mention]

Actual number is coded.

-1. Inap., other type(s) of units in facility; NA

VAR 0153 # INMT UNITS (#3) MD=-1
REF 0153 LOC 488 WIDTH 2 DK 8 COL 26-27

Q.13b(1)b. Other units with beds; e.g., trustees' cells, isolation cells, infirmary, etc.:

Number of units of each size: [Third mention]

(e.g., if you have 4 units designed to hold 2 inmates each, the entry would be "4").

Actual number is coded.

-1. Inap., other type(s) of units in facility; NA

VAR 0154 TOT # IN UNITS (#3) MD=-1
 REF 0154 LOC 490 WIDTH 3 DK 8 COL 28-30

Q.13b(1)c. Other units with beds; e.g., trustees' cells, isolation cells, infirmary, etc.:

Total number of inmates assigned to units of each size TODAY: [Third mention]

(e.g., if you have four units designed to hold 2 inmates each and they are filled today, the entry would be "8").

Actual number is coded.

-1. Inap., other type(s) of units in facility; NA

VAR 0155 AVE. SQ. FT./ U T (#3) MD=-1
 REF 0155 LOC 493 WIDTH 4 DK 8 COL 31-34

Q.13b(1)d. Other units with beds; e.g., trustees' cells, isolation cells, infirmary, etc.:

Average floor space of ONE unit of each size: [Third mention]

(e.g., 6 x 9 = 54 sq. ft.) Estimate if necessary.

Actual number is coded.

-1. Inap., other type(s) of units in facility; NA

VAR 0156 CENSUS CAP. OTHR (#3) MD=-1
 REF 0156 LOC 497 WIDTH 3 DK 8 COL 35-37

Q.13b(1). Other units with beds; e.g., trustees' cells, isolation cells, infirmary, etc.:

[Inmate capacity per cell type]: [Third mention]

(CONTINUED)

CENSUS USE ONLY. This variable is derived by multiplying the number of inmates in a unit times the number of units. This gives the capacity of inmates for each type of cell or rooms with beds.

Actual number is coded.

-1. Inap., other type(s) of units in facility; NA

VAR 0157 SIZE OF OTHR (#4) MD=-1
 REF 0157 LOC 500 WIDTH 3 DK 8 COL 38-40

Q.13b(1)a. Other units with beds; e.g., trustees' cells, isolation cells, infirmary, etc.:

Specify size; (e.g., 1-man trustee, 2-man trustee, etc.): [Fourth mention]

Actual number is coded.

-1. Inap., other type(s) of units in facility; NA

VAR 0158 # INMT UNITS (#4) MD=-1
 REF 0158 LOC 503 WIDTH 2 DK 8 COL 41-42

Q.13b(1)b. Other units with beds; e.g., trustees' cells, isolation cells, infirmary, etc.:

Number of units of each size: [Fourth mention]

(e.g., if you have 4 units designed to hold 2 inmates each, the entry would be "4").

Actual number is coded.

-1. Inap., other type(s) of units in facility; NA

VAR 0159 TOT # IN UNITS (#4) MD=-1
REF 0159 LOC 505 WIDTH 3 DK 8 COL 43-45

Q.13b(1)c. Other units with beds; e.g., trustees' cells, isolation cells, infirmary, etc.:

Total number of inmates assigned to units of each size
TODAY: [Fourth mention]

(e.g., if you have four units designed to hold 2 inmates each and they are filled today, the entry would be "8").

Actual number is coded.

-1. Inap., other type(s) of units in facility; NA

VAR 0160 AVE. SQ. FT./U T (#4) MD=-1
REF 0160 LOC 508 WIDTH 4 DK 8 COL 46-49

Q.13b(1)d. Other units with beds; e.g., trustees' cells, isolation cells, infirmary, etc.:

Average floor space of ONE unit of each size: [Fourth mention]

(e.g., 6 x 9 = 54 sq. ft.) Estimate if necessary.

Actual number is coded.

-1. Inap., other type(s) of units in facility; NA

VAR 0161 CENSUS CAP. OTHR (#4) MD=-1
REF 0161 LOC 512 WIDTH 3 DK 8 COL 50-52

Q.13b(1). Other units with beds; e.g., trustees' cells, isolation cells, infirmary, etc.:

[Inmate capacity per cell type]: [Fourth mention]

(CONTINUED)

CENSUS USE ONLY. This variable is derived by multiplying the number of inmates in a unit times the number of units. This gives the capacity of inmates for each type of cell or rooms with beds.

Actual number is coded.

-1. Inap., other type(s) of units in facility; NA

VAR 0162 TYPE NO-BED UNIT (#1) MD=9
REF 0162 LOC 515 WIDTH 1 DK 8 COL 53

Q.13 For each category below, please give the number of cells, rooms, dormitories or other units where inmates spend the night. Also indicate the total number of inmates assigned to each type of unit TODAY, and the average floor space in one unit of each type. Be sure all units and inmates are accounted for.

Q.13c(1)a. Other units without beds; e.g., drunk tanks, bullpens, isolation cells, etc.:

Specify type of confinement unit: [First mention]

1. Bullpen
2. Isolation cell (segregation cell)
3. Drunk tank
4. Padded cell
5. Holding cell (prebook, court, etc.)
6. Other

9. Inap., other type(s) of units in facility; NA

VAR 0163 #INMT IN NO-BED (#1) MD=-1
REF 0163 LOC 516 WIDTH 3 DK 8 COL 54-56

Q.13c(1)b. Other units without beds; e.g., drunk tanks, bullpens, isolation cells, etc.:

Number of units of each size: [First mention]

(CONTINUED)

(e.g., if you have 4 units designed to hold 2 inmates each, the entry would be "4").

Actual number is coded.

-1. Inap., other type(s) of units in facility; NA

.....
VAR 0164 TOT # IN NO-BED U (#1) MD=-1
REF 0164 LOC 519 WIDTH 3 DK 8 COL 57-59

Q.13c(1)c. Other units without beds; e.g., drunk tanks, bullpens, isolation cells, etc.:

Total number of inmates assigned to units of each size TODAY: [First mention]

(e.g., if you have four units designed to hold 2 inmates each and they are filled today, the entry would be "8").

Actual number is coded.

-1. Inap., other type(s) of units in facility; NA

.....
VAR 0165 AVE. SQ. FT./NO-BED (#1) MD=-1
REF 0165 LOC 522 WIDTH 4 DK 8 COL 60-63

Q.13c(1)d. Other units without beds; e.g., drunk tanks, bullpens, isolation cells, etc.:

Average floor space of ONE unit of each size: [First mention]

(e.g., 6 x 9 = 54 sq. ft.) Estimate if necessary.

Actual number is coded.

-1. Inap., other type(s) of units in facility; NA

VAR 0166 CENSUS CAP. NO-BED (#1) MD=-1
REF 0166 LOC 526 WIDTH 3 DK 8 COL 64-66

Q.13c(1). Other units without beds; e.g., drunk tanks, bullpens, isolation cells, etc.:

[Inmate capacity per cell type]: [First mention]

CENSUS USE ONLY. This variable is derived by multiplying the number of inmates in a unit times the number of units. This gives the capacity of inmates for each type of cell or rooms without beds.

Actual number is coded.

-1. NA

.....
VAR 0167 TYPE NO-BED UNIT (#2) MD=9
REF 0167 LOC 529 WIDTH 1 DK 8 COL 67

Q.13c(2)a. Other units without beds; e.g., drunk tanks, bullpens, isolation cells, etc.:

Specify type of confinement unit: [Second mention]

- 1. Bullpen
2. Isolation cell (segregation cell)
3. Drunk tank
4. Padded cell
5. Holding cell (prebook, court, etc.)
6. Other

9. Inap., other type(s) of units in facility; NA

.....
VAR 0168 #INMT IN NO-BED (#2) MD=-1
REF 0168 LOC 530 WIDTH 3 DK 8 COL 68-70

Q.13c(2)b. Other units without beds; e.g., drunk tanks, bullpens, isolation cells, etc.:

(CONTINUED)

Number of units of each size: [Second mention]

(e.g., if you have 4 units designed to hold 2 inmates each, the entry would be "4").

Actual number is coded.

-1. Inap., other type(s) of units in facility; NA

VAR 0169 TOT # IN NO-BED U (#2) MD=-1
REF 0169 LOC 533 WIDTH 3 DK 8 COL 71-73

Q.13c(2)c. Other units without beds; e.g., drunk tanks, bullpens, isolation cells, etc.:

Total number of inmates assigned to units of each size TODAY: [Second mention]

(e.g., if you have four units designed to hold 2 inmates each and they are filled today, the entry would be "8").

Actual number is coded.

-1. Inap., other type(s) of units in facility; NA

VAR 0170 AVE. SQ. FT./NO-BED (#2) MD=-1
REF 0170 LOC 536 WIDTH 4 DK 8 COL 74-77

Q.13c(2)d. Other units without beds; e.g., drunk tanks, bullpens, isolation cells, etc.:

Average floor space of ONE unit of each size: [Second mention]

(e.g., 6 x 9 = 54 sq. ft.) Estimate if necessary.

Actual number is coded.

(CONTINUED)

-1. Inap., other type(s) of units in facility; NA

VAR 0171 CENSUS CAP. NO-BED (#2) MD=-1
REF 0171 LOC 540 WIDTH 3 DK 8 COL 78-80

Q.13c(2). Other units without beds; e.g., drunk tanks, bullpens, isolation cells, etc.:

[Inmate capacity per cell type]: [Second mention]

CENSUS USE ONLY. This variable is derived by multiplying the number of inmates in a unit times the number of units. This gives the capacity of inmates for each type of cell or rooms without beds.

Actual number is coded.

-1. NA

DECK IDENTIFICATION NUMBER IS '09' DK 9 COL 1-2

VAR 0001 ICPSR STUDY NUMBER-7737 NO MISSING DATA CODES
REF 0001 LOC 1 WIDTH 4 DK 9 COL 3-6

ICPSR Study Number-7737

7737. The ICPSR has attached this number as a unique data collection identification number.

VAR 0002 ICPSR EDITION NUMBER-3 NO MISSING DATA CODES
REF 0002 LOC 5 WIDTH 1 DK 9 COL 7

ICPSR Edition Number-3

(CONTINUED)

The number identifying the release edition of the data collection.

3. Third ICPSR edition; summer, 1984 release

.....
 VAR 0003 ICPSR PART NUMBER-1 NO MISSING DATA CODES
 REF 0003 LOC 6 WIDTH 1 DK 9 COL 8

ICPSR Part Number-1

The number identifying this part of a one-part data collection.

1. The entire data collection is contained in one part

.....
 VAR 0004 ICPSR SEQUENTIAL ID NO MISSING DATA CODES
 REF 0004 LOC 7 WIDTH 4 DK 9 COL 9-12

ICPSR Sequential Case Identification Number

The ICPSR has attached a sequential case identification number to uniquely identify each case.

.....
 VAR 0172 TYPE NO-BED UNIT (#3) MD=9
 REF 0172 LOC 543 WIDTH 1 DK 9 COL 13

Q.13c(3)a. Other units without beds; e.g., drunk tanks, bullpens, isolation cells, etc.:

Specify type of confinement unit: [Third mention]

1. Bullpen
2. Isolation cell (segregation cell)

(CONTINUED)

3. Drunk tank
4. Padded cell
5. Holding cell (prebook, court, etc.)
6. Other

9. Inap., other type(s) of units in facility; NA

.....
 VAR 0173 #INMT IN NO-BED (#3) MD=-1
 REF 0173 LOC 544 WIDTH 3 DK 9 COL 14-16

Q.13c(3)b. Other units without beds; e.g., drunk tanks, bullpens, isolation cells, etc.:

Number of units of each size: [Third mention]

(e.g., if you have 4 units designed to hold 2 inmates each, the entry would be "4").

 Actual number is coded.

- 1. Inap., other type(s) of units in facility; NA

.....
 VAR 0174 TOT # IN NO-BED U (#3) MD=-1
 REF 0174 LOC 547 WIDTH 3 DK 9 COL 17-19

Q.13c(3)c. Other units without beds; e.g., drunk tanks, bullpens, isolation cells, etc.:

Total number of inmates assigned to units of each size TODAY: [Third mention]

(e.g., if you have four units designed to hold 2 inmates each and they are filled today, the entry would be "8").

 Actual number is coded.

- 1. Inap., other type(s) of units in facility; NA

VAR 0175 AVE. SQ. FT./NO-BED (#3) MD=-1
REF 0175 LOC 550 WIDTH 4 DK 9 COL 20-23

Q.13c(3)d. Other units without beds; e.g., drunk tanks, bullpens, isolation cells, etc.:

Average floor space of ONE unit of each size: [Third mention]

(e.g., 6 x 9 = 54 sq. ft.) Estimate if necessary.

Actual number is coded.

-1. Inap., other type(s) of units in facility; NA

VAR 0176 CENSUS CAP. NO-BED (#3) MD=-1
REF 0176 LOC 554 WIDTH 3 DK 9 COL 24-26

Q.13c(3). Other units without beds; e.g., drunk tanks, bullpens, isolation cells, etc.:

[Inmate capacity per cell type]: [Third mention]

CENSUS USE ONLY. This variable is derived by multiplying the number of inmates in a unit times the number of units. This gives the capacity of inmates for each type of cell or rooms without beds.

Actual number is coded.

-1. NA

VAR 0177 TYPE NO-BED UNIT (#4) MD=9
REF 0177 LOC 557 WIDTH 1 DK 9 COL 27

Q.13c(4)a. Other units without beds; e.g., drunk tanks, bullpens, isolation cells, etc.:

Specify type of confinement unit: [Fourth mention]

(CONTINUED)

1. Bullpen
2. Isolation cell (segregation cell)
3. Drunk tank
4. Padded cell
5. Holding cell (prebook, court, etc.)
6. Other

9. Inap., other type(s) of units in facility; NA

VAR 0178 #INMT IN NO-BED (#4) MD=-1
REF 0178 LOC 558 WIDTH 3 DK 9 COL 28-30

Q.13c(4)b. Other units without beds; e.g., drunk tanks, bullpens, isolation cells, etc.:

Number of units of each size: [Fourth mention]

(e.g., if you have 4 units designed to hold 2 inmates each, the entry would be "4").

Actual number is coded.

-1. Inap., other type(s) of units in facility; NA

VAR 0179 TOT # IN NO-BED U (#4) MD=-1
REF 0179 LOC 561 WIDTH 3 DK 9 COL 31-33

Q.13c(4)c. Other units without beds; e.g., drunk tanks, bullpens, isolation cells, etc.:

Total number of inmates assigned to units of each size TODAY: [Fourth mention]

(e.g., if you have four units designed to hold 2 inmates each and they are filled today, the entry would be "8").

Actual number is coded.

-1. Inap., other type(s) of units in facility; NA

VAR 0180 AVE. SQ. FT./NO-BED (#4) MD=-1
REF 0180 LOC 564 WIDTH 4 DK 9 COL 34-37

Q.13c(4)d. Other units without beds; e.g., drunk tanks, bullpens, isolation cells, etc.:

Average floor space of ONE unit of each size: [Fourth mention]

(e.g., 6 x 9 = 54 sq. ft.) Estimate if necessary.

Actual number is coded.

-1. Inap., other type(s) of units in facility; NA

VAR 0181 CENSUS CAP. NO-BED (#4) MD=-1
REF 0181 LOC 568 WIDTH 3 DK 9 COL 38-40

Q.13c(4). Other units without beds; e.g., drunk tanks, bullpens, isolation cells, etc.:

[Inmate capacity per cell type]: [Fourth mention]

CENSUS USE ONLY. This variable is derived by multiplying the number of inmates in a unit times the number of units. This gives the capacity of inmates for each type of cell or rooms without beds.

Actual number is coded.

-1. NA

VAR 0182 TOTAL NUMBER OF INMATES MD=-1
REF 0182 LOC 571 WIDTH 4 DK 9 COL 41-44

Q.13d(d). Total number of inmates:

Total number of inmates assigned to units of each size TODAY

(CONTINUED)

(e.g., if you have 4 units designed to hold 2 inmates each, and they are filled today, the entry would be "8").

Actual number is coded.

-1. Inap., other type(s) of units in facility; NA

VAR 0183 TOT # CENSUS CAPACITY MD=-1
REF 0183 LOC 575 WIDTH 4 DK 9 COL 45-48

Q.13d. Total number of inmates:

[Inmate capacity per cell type]

CENSUS USE ONLY. This variable is derived by multiplying the number of inmates in a unit times the number of units. This gives the capacity of inmates for each type of cell or rooms without beds.

Actual number is coded.

-1. Inap., other type(s) of units in facility; NA

VAR 0184 TOTAL # FULLTIME EMPLOYEES MD=-1
REF 0184 LOC 579 WIDTH 4 DK 9 COL 49-52

Q.14(1). The TOTAL number of full-time employees.

Actual number is coded.

-1. Inap., no full-time employees; NA

VAR 0185 TOT # FULM ADMIN EMP MD=-1
REF 0185 LOC 583 WIDTH 4 DK 9 COL 53-56

Q.14a(1). The total number of full-time: Administrators - Chief Jailer (or Sheriff or Chief of Police), Deputies and/or assistants who work at the jail full-time in an administrative capacity.

Actual number is coded.

-1. Inap., other type(s) of full-time employees; no full-time employees; NA

VAR 0186 TOT # FULM CUSTD EMP MD=-1
REF 0186 LOC 587 WIDTH 4 DK 9 COL 57-60

Q.14b(1). The total number of full-time: Custodial officers (guards, jailers, etc.).

Actual number is coded.

-1. Inap., other type(s) of full-time employees; no full-time employees; NA

VAR 0187 TOT # FULM CLERC EMP MD=-1
REF 0187 LOC 591 WIDTH 3 DK 9 COL 61-63

Q.14c(1). The total number of full-time: Clerical and maintenance personnel (typists, secretaries, janitors, cooks, groundskeepers, etc.).

Actual number is coded.

-1. Inap., other type(s) of full-time employees; no full-time employees; NA

VAR 0188 TOT # FULM TEACH EMP MD=-1
REF 0188 LOC 594 WIDTH 3 DK 9 COL 64-66

-- FORM CJ3 --

Q.14d(1). The total number of full-time: Academic teachers.

-- FORM CJ4 --

Q.14d(1). The total number of full-time: Services (academic teachers, vocational teachers, social workers, psychologists, counselors, doctors, nurses, etc.).

Actual number is coded.

-1. Inap., other type(s) of full-time employees; no full-time employees; NA

VAR 0189 TOT # FULM VOCTH EMP MD=-1
REF 0189 LOC 597 WIDTH 3 DK 9 COL 67-69

-- FORM CJ3 ONLY --

Q.14e(1). The total number of full-time: Vocational teachers.

Actual number is coded.

-1. Inap., other type(s) of full-time employees; no full-time employees; facility responded to Form CJ4; NA

VAR 0190 TOT # FULM SOCWK EMP MD=-1
REF 0190 LOC 600 WIDTH 3 DK 9 COL 70-72

-- FORM CJ3 ONLY --

Q.14f(1). The total number of full-time: Social workers

Actual number is coded.

-1. Inap., other type(s) of full-time employees;
no full-time employees; facility responded to
Form CJ4; NA

VAR 0191 TOT # FULM PSYCHOL EMP MD=-1
REF 0191 LOC 603 WIDTH 2 DK 9 COL 73-74

-- FORM CJ3 ONLY --

Q.14g(1). The total number of full-time: Psychologists

Actual number is coded.

-1. Inap., other type(s) of full-time employees;
no full-time employees; facility responded to
Form CJ4; NA

VAR 0192 TOT # FULM PSYCHIAT EMP MD=-1
REF 0192 LOC 605 WIDTH 2 DK 9 COL 75-76

-- FORM CJ3 ONLY --

Q.14h(1). The total number of full-time: Psychiatrists

Actual number is coded.

(CONTINUED)

-1. Inap., other type(s) of full-time employees;
no full-time employees; facility responded to
Form CJ4; NA

VAR 0193 TOT # FULM DOCTR EMP MD=-1
REF 0193 LOC 607 WIDTH 2 DK 9 COL 77-78

-- FORM CJ3 ONLY --

Q.14i(1). The total number of full-time: Medical doctors

Actual number is coded.

-1. Inap., other type(s) of full-time employees;
no full-time employees; facility responded to
Form CJ4; NA

VAR 0194 TOT # FULM NURSE EMP MD=-1
REF 0194 LOC 609 WIDTH 2 DK 9 COL 79-80

-- FORM CJ3 ONLY --

Q.14j(1). The total number of full-time: Nurses

Actual number is coded.

-1. Inap., other type(s) of full-time employees;
no full-time employees; facility responded to
Form CJ4; NA

DECK IDENTIFICATION NUMBER IS '10'

DK 10 COL 1- 2

VAR 0001 ICPSR STUDY NUMBER-7737 NO MISSING DATA CODES
REF 0001 LOC 1 WIDTH 4 DK 10 COL 3- 6

ICPSR Study Number-7737

7737. The ICPSR has attached this number as a unique data collection identification number.

VAR 0002 ICPSR EDITION NUMBER-3 NO MISSING DATA CODES
REF 0002 LOC 5 WIDTH 1 DK 10 COL 7

ICPSR Edition Number-3

The number identifying the release edition of the data collection.

3. Third ICPSR edition; summer, 1984 release

VAR 0003 ICPSR PART NUMBER-1 NO MISSING DATA CODES
REF 0003 LOC 6 WIDTH 1 DK 10 COL 8

ICPSR Part Number-1

The number identifying this part of a one-part data collection.

1. The entire data collection is contained in one part

VAR 0004 ICPSR SEQUENTIAL ID NO MISSING DATA CODES
REF 0004 LOC 7 WIDTH 4 DK 10 COL 9-12

ICPSR Sequential Case Identification Number

The ICPSR has attached a sequential case identification number to uniquely identify each case.

VAR 0195 TOT # FULTM PARAM EMP MD=-1
REF 0195 LOC 611 WIDTH 2 DK 10 COL 13-14

-- FORM CJ3 ONLY --

Q.14k(1). The total number of full-time: Paramedics

Actual number is coded.

-1. Inap., other type(s) of full-time employees; no full-time employees; facility responded to Form CJ4; NA

VAR 0196 TOT # FULTM OTHER EMP MD=-1
REF 0196 LOC 613 WIDTH 2 DK 10 COL 15-16

-- FORM CJ3 --

Q.14l(1). The total number of full-time: Other specified employees.

-- FORM CJ4 --

Q.14e(1). The total number of full-time: Other specified employees.

Actual number is coded.

(CONTINUED)

-1. Inap., other type(s) of full-time employees;
no full-time employees; NA

VAR 0197 TOT # PRSTM EMP MD=-1
REF 0197 LOC 615 WIDTH 4 DK 10 COL 17-20

Q.14(2). The TOTAL number of part-time employees.

Actual number is coded.

-1. Inap., other type(s) of part-time employees;
no part-time employees; NA

VAR 0198 TOT # PRSTM ADMIN EMP MD=-1
REF 0198 LOC 619 WIDTH 4 DK 10 COL 21-24

Q.14a(2). The total number of part-time: Administrators -
Chief Jailer (or Sheriff or Chief of Police), Deputies
and/or assistants who work at the jail part-time in an
administrative capacity.

Actual number is coded.

-1. Inap., other type(s) of part-time employees;
no part-time employees; NA

VAR 0199 TOT # PRSTM CUSTD EMP MD=-1
REF 0199 LOC 623 WIDTH 4 DK 10 COL 25-28

Q.14b(2). The total number of part-time: Custodial
officers (guards, jailers, etc.).

(CONTINUED)

Actual number is coded.

-1. Inap., other type(s) of part-time employees;
no part-time employees; NA

VAR 0200 TOT # PRSTM CLERC EMP MD=-1
REF 0200 LOC 627 WIDTH 3 DK 10 COL 29-31

Q.14c(2). The total number of part-time: Clerical and
maintainance personnel (typists, secretaries, janitors,
cooks, groundskeepers, etc.).

Actual number is coded.

-1. Inap., other type(s) of part-time employees;
no part-time employees; NA

VAR 0201 TOT # PRSTM TEACH EMP MD=-1
REF 0201 LOC 630 WIDTH 3 DK 10 COL 32-34

-- FORM CJ3 --

Q.14d(2). The total number of part-time: Academic
teachers.

-- FORM CJ4 --

Q.14d(2). The total number of part-time: Services
(academic teachers, vocational teachers, social workers,
psychologists, counselors, doctors, nurses, etc.).

Actual number is coded.

-1. Inap., other type(s) of part-time employees;
no part-time employees; NA

VAR 0202 TOT # PRTTM VOCTH EMP MD=-1
REF 0202 LOC 633 WIDTH 3 DK 10 COL 35-37

-- FORM CJ3 ONLY --

Q.14e(2). The total number of part-time: Vocational
teachers.

Actual number is coded.

-1. Inap., other type(s) of part-time employees;
no part-time employees; facility responded to
Form CJ4; NA

VAR 0203 TOT # PRTTM SOCWK EMP MD=-1
REF 0203 LOC 636 WIDTH 3 DK 10 COL 38-40

-- FORM CJ3 ONLY --

Q.14f(2). The total number of part-time: Social workers

Actual number is coded.

-1. Inap., other type(s) of part-time employees;
no part-time employees; facility responded to
Form CJ4; NA

VAR 0204 TOT # PRTTM PSYCHOL EMP MD=-1
REF 0204 LOC 639 WIDTH 2 DK 10 COL 41-42

-- FORM CJ3 ONLY --

Q.14g(2). The total number of part-time: Psychologists

Actual number is coded.

(CONTINUED)

-1. Inap., other type(s) of part-time employees;
no part-time employees; facility responded to
Form CJ4; NA

VAR 0205 TOT # PRTTM PSYCHIAT EMP MD=-1
REF 0205 LOC 641 WIDTH 2 DK 10 COL 43-44

-- FORM CJ3 ONLY --

Q.14h(2). The total number of part-time: Psychiatrists

Actual number is coded.

-1. Inap., other type(s) of part-time employees;
no part-time employees; facility responded to
Form CJ4; NA

VAR 0206 TOT # PRTTM DOCTR EMP MD=-1
REF 0206 LOC 643 WIDTH 2 DK 10 COL 45-46

-- FORM CJ3 ONLY --

Q.14i(2). The total number of part-time: Medical doctors

Actual number is coded.

-1. Inap., other type(s) of part-time employees;
no part-time employees; facility responded to
Form CJ4; NA

VAR 0207 TOT # PRTTM NURSE EMP MD=-1
REF 0207 LOC 645 WIDTH 2 DK 10 COL 47-48

-- FORM CJ3 ONLY --

Q.14j(2). The total number of part-time: Nurses

Actual number is coded.

- 1. Inap., other type(s) of part-time employees; no part-time employees; facility responded to Form CJ4; NA

VAR 0208 TOT # PRTTM PARAM EMP MD=-1
REF 0208 LOC 647 WIDTH 2 DK 10 COL 49-50

-- FORM CJ3 ONLY --

Q.14k(2). The total number of part-time: Paramedics

Actual number is coded.

- 1. Inap., other type(s) of part-time employees; no part-time employees; facility responded to Form CJ4; NA

VAR 0209 TOT # PRTTM OTHER EMP MD=-1
REF 0209 LOC 649 WIDTH 2 DK 10 COL 51-52

-- FORM CJ3 --

Q.14l(2). The total number of part-time: Other specified employees.

-- FORM CJ4 --

(CONTINUED)

Q.14e(2). The total number of part-time: Other specified employees.

Actual number is coded.

- 1. Inap., other type(s) of part-time employees; no part-time employees; NA

VAR 0210 INSTIT HAVE WRK RELEASE? MD=9
REF 0210 LOC 651 WIDTH 1 DK 10 COL 53

Q.15. Does your institution have a work-release program?

- 1. Yes
- 2. No
- 9. NA

VAR 0211 # ML IN WRK RELEASE MD=-1
REF 0211 LOC 652 WIDTH 4 DK 10 COL 54-57

-- IF Q.15 IS CODED 1 --

Q.15.1. How many male inmates are now participating in the work-release program?

Actual number is coded.

- 1. Inap., Q.15 coded other than 1; all female facility; NA

VAR 0212 # FML IN WRL RELEASE
REF 0212 LOC 656 WIDTH 4

MD=-1
DK 10 COL 58-61

-- IF Q.15 IS CODED 1 --

Q.15.1. How many female inmates are now participating in the work-release program?

Actual number is coded.

-1. Inap., Q.15 coded other than 1; all male facility;
NA

VAR 0213 INSTIT HAVE WKEND SENT.?
REF 0213 LOC 660 WIDTH 1

MD=9
DK 10 COL 62

Q.16. Does your institution have a weekend sentence program?

- 1. Yes
- 2. No
- 9. NA

VAR 0214 # ML IN WKEND SENTENCE
REF 0214 LOC 661 WIDTH 4

MD=-1
DK 10 COL 63-66

-- IF Q.16 IS CODED 1 --

Q.16.1. On a typical weekend, how many males are usually serving a weekend sentence?

Actual number is coded.

-1. Inap., Q.16 coded other than 1; all female facility; NA

VAR 0215 # FML IN WKEND SENTENCE
REF 0215 LOC 665 WIDTH 4

MD=-1
DK 10 COL 67-70

-- IF Q.16 IS CODED 1 --

Q.16.1. on a typical weekend how many females are usually serving a weekend sentence?

Actual number is coded.

-1. Inap., Q.16 coded other than 1; all male facility;
NA

VAR 0216 INMT HEALTH INTVW IN ADM
REF 0216 LOC 669 WIDTH 1

MD=9
DK 10 COL 71

Q.17. Of the persons admitted to your institution, how many are given a health interview or "screening" upon admission (i.e, during which an initial assessment of the person's health is made from observation and medically-related questions are asked such as "are you on medication?", etc.)?

- 1. All
- 2. None
- 3. Some
- 4. Only obviously sick, indicating health problem, etc..
- 5. Health screening/physical given elsewhere.
- 6. Health screening/physical given to some inmates at this facility, to others elsewhere.
- 9. NA

VAR 0217 INMT PHYSICAL ON ADMIT?
REF 0217 LOC 670 WIDTH 1

MD=9
DK 10 COL 72

Q.18. Of the persons admitted to your institution, how many are given a medical examination upon admission (i.e, in

(CONTINUED)

which such things are done as taking blood pressure, blood or urine sample, chest x-ray, eye and ear examination, etc.)?

- 1. All
- 2. None
- 3. Some
- 4. Only obviously sick, indicating health problem, etc..
- 5. Health screening/physical given elsewhere.
- 6. Health screening/physical given to some inmates at this facility, to others elsewhere.
- 9. NA

.....

VAR 0218 ROUTINE BLOOD PRESSURE ? MD=9
 REF 0218 LOC 671 WIDTH 1 DK 10 COL 73

-- FORM CJ3 ONLY --

Q.19. Please indicate which of the following things are routinely done in the admission physical:

Blood pressure taken?

- 1. Yes
- 9. No; Inap., other test(s) administered; no admission test(s) administered; facility responded to Form CJ4; NA

.....

VAR 0219 ROUTINE BLD SAMPLE (VD) ? MD=9
 REF 0219 LOC 672 WIDTH 1 DK 10 COL 74

-- FORM CJ3 ONLY --

Q.19. Please indicate which of the following things are routinely done in the admission physical:

Blood sample taken for Venereal Disease?

(CONTINUED)

- 1. Yes
- 9. No; Inap., other test(s) administered; no admission test(s) administered; facility responded to Form CJ4; NA

.....

VAR 0220 ROUTINE BLD SAMPLE (HEP) ? MD=9
 REF 0220 LOC 673 WIDTH 1 DK 10 COL 75

-- FORM CJ3 ONLY --

Q.19. Please indicate which of the following things are routinely done in the admission physical:

Blood sample taken for hepatitis?

- 1. Yes
- 9. No; Inap., other test(s) administered; no admission test(s) administered; facility responded to Form CJ4; NA

.....

VAR 0221 ROUTINE BLD SAMPLE (OTH) ? MD=9
 REF 0221 LOC 674 WIDTH 1 DK 10 COL 76

-- FORM CJ3 ONLY --

Q.19. Please indicate which of the following things are routinely done in the admission physical:

Blood sample taken for other reasons?

- 1. Yes
- 9. No; Inap., other test(s) administered; no admission test(s) administered; facility responded to Form CJ4; NA

VAR 0222 ROUTINE SKIN TEST (TB) ? MD=9
REF 0222 LOC 675 WIDTH 1 DK 10 COL 77

-- FORM CJ3 ONLY --

Q.19. Please indicate which of the following things are routinely done in the admission physical:

Skin test for tuberculosis?

- 1. Yes
- 9. No; Inap., other test(s) administered; no admission test(s) administered; facility responded to Form CJ4; NA

.....
VAR 0223 ROUTINE CHEST X-RAY ? MD=9
REF 0223 LOC 676 WIDTH 1 DK 10 COL 78

-- FORM CJ3 ONLY --

Q.19. Please indicate which of the following things are routinely done in the admission physical:

A chest x-ray?

- 1. Yes
- 9. No; Inap., other test(s) administered; no admission test(s) administered; facility responded to Form CJ4; NA

.....
VAR 0224 ROUTINE DENTAL CHECK ? MD=9
REF 0224 LOC 677 WIDTH 1 DK 10 COL 79

-- FORM CJ3 ONLY --

Q.19. Please indicate which of the following things are routinely done in the admission physical:

(CONTINUED)

A dental examination?

- 1. Yes
- 9. No; Inap., other test(s) administered; no admission test(s) administered; facility responded to Form CJ4; NA

.....
VAR 0225 ROUTINE EYE EXAM ? MD=9
REF 0225 LOC 678 WIDTH 1 DK 10 COL 80

-- FORM CJ3 ONLY --

Q.19. Please indicate which of the following things are routinely done in the admission physical:

An eye examination?

- 1. Yes
- 9. No; Inap., other test(s) administered; no admission test(s) administered; facility responded to Form CJ4; NA

.....
DECK IDENTIFICATION NUMBER IS '11' DK 11 COL 1- 2

.....
VAR 0001 ICPSR STUDY NUMBER-7737 NO MISSING DATA CODES
REF 0001 LOC 1 WIDTH 4 DK 11 COL 3- 6

ICPSR Study Number-7737

7737. The ICPSR has attached this number as a unique data collection identification number.

VAR 0002 ICPSR EDITION NUMBER-3 NO MISSING DATA CODES
REF 0002 LOC 5 WIDTH 1 DK 11 COL 7

ICPSR Edition Number-3

The number identifying the release edition of the data collection.

- 3. Third ICPSR edition; summer, 1984 release

VAR 0003 ICPSR PART NUMBER-1 NO MISSING DATA CODES
REF 0003 LOC 6 WIDTH 1 DK 11 COL 8

ICPSR Part Number-1

The number identifying this part of a one-part data collection.

- 1. The entire data collection is contained in one part

VAR 0004 ICPSR SEQUENTIAL ID NO MISSING DATA CODES
REF 0004 LOC 7 WIDTH 4 DK 11 COL 9-12

ICPSR Sequential Case Identification Number

The ICPSR has attached a sequential case identification number to uniquely identify each case.

VAR 0226 ROUTINE HEIGHT MEASURE ? MD=9
REF 0226 LOC 679 WIDTH 1 DK 11 COL 13

-- FORM CJ3 ONLY --

(CONTINUED)

Q.19. Please indicate which of the following things are routinely done in the admission physical:

Height measured?

- 1. Yes
- 9. No; Inap., other test(s) administered; no admission test(s) administered; facility responded to Form CJ4; NA

VAR 0227 ROUTINE WEIGHT MEASURE ? MD=9
REF 0227 LOC 680 WIDTH 1 DK 11 COL 14

-- FORM CJ3 ONLY --

Q.19. Please indicate which of the following things are routinely done in the admission physical:

Weight measured?

- 1. Yes
- 9. No; Inap., other test(s) administered; no admission test(s) administered; facility responded to Form CJ4; NA

VAR 0228 ROUTINE PULSE TAKEN ? MD=9
REF 0228 LOC 681 WIDTH 1 DK 11 COL 15

-- FORM CJ3 ONLY --

Q.19. Please indicate which of the following things are routinely done in the admission physical:

Pulse taken?

- 1. Yes
- 9. No; Inap., other test(s) administered; no admission test(s) administered; facility responded to Form

(CONTINUED)

CJ4; NA

VAR 0229 ROUTINE TEMP TAKEN ? MD=9
REF 0229 LOC 682 WIDTH 1 DK 11 COL 16

-- FORM CJ3 ONLY --

Q.19. Please indicate which of the following things are routinely done in the admission physical:

Temperature taken?

- 1. Yes
- 9. No; Inap., other test(s) administered; no admission test(s) administered; facility responded to Form CJ4; NA

VAR 0230 ROUTINE URINE SAMPLE ? MD=9
REF 0230 LOC 683 WIDTH 1 DK 11 COL 17

-- FORM CJ3 ONLY --

Q.19. Please indicate which of the following things are routinely done in the admission physical:

Urine sample taken?

- 1. Yes
- 9. No; Inap., other test(s) administered; no admission test(s) administered; facility responded to Form CJ4; NA

VAR 0231 ROUTINE HEARTBEAT CHECK? MD=9
REF 0231 LOC 684 WIDTH 1 DK 11 COL 18

-- FORM CJ3 ONLY --

(CONTINUED)

Q.19. Please indicate which of the following things are routinely done in the admission physical:

Heartbeat checked?

- 1. Yes
- 9. No; Inap., other test(s) administered; no admission test(s) administered; facility responded to Form CJ4; NA

VAR 0232 OTHER ROUTINE TEST MD=9
REF 0232 LOC 685 WIDTH 1 DK 11 COL 19

-- FORM CJ3 ONLY --

Q.19. Please indicate which of the following things are routinely done in the admission physical:

Other specified practice?

- 1. Yes
- 9. No; Inap., other test(s) administered; no admission test(s) administered; facility responded to Form CJ4; NA

VAR 0233 MED PHY VARIES CONDT MD=9
REF 0233 LOC 686 WIDTH 1 DK 11 COL 20

-- FORM CJ3 ONLY --

Q.19. Please indicate which of the following things are routinely done in the admission physical:

Medical physical varies depending on condition of inmate.

- 1. Yes
- 9. No; Inap., other test(s) administered; no admission test(s) administered; facility responded to Form

(CONTINUED)

CJ4; NA

VAR 0234 CAN NOT SPECIFY WHT ROUT MD=9
REF 0234 LOC 687 WIDTH 1 DK 11 COL 21

-- FORM CJ3 ONLY --

Q.19. Please indicate which of the following things are routinely done in the admission physical:

Can not specify what tests are routinely done.

1. Yes

9. No; Inap., other test(s) administered; no admission test(s) administered; facility responded to Form CJ4; NA

VAR 0235 WHG ADMIN. TEST DOCTOR ? MD=9
REF 0235 LOC 688 WIDTH 1 DK 11 COL 22

Q.20. Who administered these tests: A doctor?

1. Yes - a doctor

9. Inap., other person(s) administered test(s); NA

VAR 0236 WHO ADMIN. TEST NURSE ? MD=9
REF 0236 LOC 689 WIDTH 1 DK 11 COL 23

Q.20. Who administered these tests: A nurse?

2. Yes - a nurse

9. Inap., other person(s) administered test(s); NA

VAR 0237 WHO ADMIN. TEST PARAMEDIC? MD=9
REF 0237 LOC 690 WIDTH 1 DK 11 COL 24

Q.20. Who administered these tests: A paramedic?

3. Yes - a paramedic

9. Inap., other person(s) administered test(s); NA

VAR 0238 WHO ADMIN. ADMT OFFICER? MD=9
REF 0238 LOC 691 WIDTH 1 DK 11 COL 25

Q.20. Who administered these tests: An admitting officer?

4. Yes - an admitting officer

9. Inap., other person(s) administered test(s); NA

VAR 0239 WHO ADMIN. TEST OTHER MD=9
REF 0239 LOC 692 WIDTH 1 DK 11 COL 26

Q.20. Who administered these tests: Some other person?

5. Yes - some other person

9. Inap., other person(s) administered test(s); NA

VAR 0240 DO NOT KNOW WHO ADMIN T MD=9
REF 0240 LOC 693 WIDTH 1 DK 11 COL 27

Q.20. Who administered these tests: Not available?

6. Yes - Do not know who administered tests

(CONTINUED)

9. Inap., other person(s) administered test(s); NA

VAR 0241 INSTIT ADMIN DRUG TEST ? MD=9
REF 0241 LOC 694 WIDTH 1 DK 11 COL 28

-- FORM CJ3 ONLY --

Q.21.a. Does your institution administer DRUG diagnostic tests to inmates upon admission?

- 1. Yes
- 2. No

9. Inap., facility responded to Form CJ4; NA

VAR 0242 INSTIT ADMIN ALCH TEST ? MD=9
REF 0242 LOC 695 WIDTH 1 DK 11 COL 29

-- FORM CJ3 ONLY --

Q.21.b. Does your institution administer ALCOHOL diagnostic tests to inmates upon admission?

- 1. Yes
- 2. No

9. Inap., facility responded to Form CJ4; NA

VAR 0243 DRUG COUNSELING BY INST MD=9
REF 0243 LOC 696 WIDTH 1 DK 11 COL 30

-- FORM CJ3 ONLY --

Q.22.a(a). Does your institution offer DRUG counseling to inmates that is run by the institution?

(CONTINUED)

1. Yes - drug counseling is run by the institution

9. No; Inap., facility responded to Form CJ4; NA

VAR 0244 DRUG COUNS. OUTSIDE INST MD=9
REF 0244 LOC 697 WIDTH 1 DK 11 COL 31

-- FORM CJ3 ONLY --

Q.22.a(b). Does your institution offer DRUG counseling to inmates that is run by an outside organization?

2. Yes - drug counseling is run by an outside organization

9. No; Inap., facility responded to Form CJ4; NA

VAR 0245 NO DRUG COUNSELING ? MD=9
REF 0245 LOC 698 WIDTH 1 DK 11 COL 32

-- FORM CJ3 ONLY --

Q.22.a(c). [Institution DOES NOT] offer DRUG counseling?

3. This institution has NO drug counseling

9. Inap., facility has DRUG counseling; facility responded to Form CJ4; NA

VAR 0246 ACHL COUNSELING BY INST MD=9
REF 0246 LOC 699 WIDTH 1 DK 11 COL 33

-- FORM CJ3 ONLY --

Q.22.a(a). Does your institution offer ALCOHOL counseling

(CONTINUED)

to inmates that is run by the institution?

- 1. Yes - alcohol counseling is run by the institution
- 9. No; Inap., facility responded to Form CJ4; NA

.....

VAR 0247	ACHL COUNS. OUTSIDE INST	MD=9
REF 0247	LOC 700 WIDTH 1	DK 11 COL 34

-- FORM CJ3 ONLY --

Q.22.a(b). Does your institution offer ALCOHOL counseling to inmates that is run by an outside organization?

- 2. Yes - alcohol counseling is run by an outside organization
- 9. No; Inap., facility responded to Form CJ4; NA

.....

VAR 0248	NO ACHL COUNSELING	MD=9
REF 0248	LOC 701 WIDTH 1	DK 11 COL 35

-- FORM CJ3 ONLY --

Q.22.a(c). [Institution DOES NOT] offer ALCOHOL counseling?

- 3. This institution has NO alcohol counseling
- 9. Inap., facility has ALCOHOL counseling; facility responded to Form CJ4; NA

VAR 0249	NO MED FAC. AT JAIL ?	MD=9
REF 0249	LOC 702 WIDTH 1	DK 11 COL 36

Q.23.1. What medical facilities are available IN THE JAIL:

None?

- 1. None are available IN THE JAIL
- 9. Inap., medical facilities are available; NA

.....

VAR 0250	MED EXAM. RM AT JAIL ?	MD=9
REF 0250	LOC 703 WIDTH 1	DK 11 COL 37

Q.23.2. What medical facilities are available IN THE JAIL:

A medical examining room?

- 2. Yes - a medical examining room
- 9. Inap., other medical facilities available; NA

.....

VAR 0251	INFIRM/NO BED OVNGT JAIL	MD=9
REF 0251	LOC 704 WIDTH 1	DK 11 COL 38

Q.23.3. What medical facilities are available IN THE JAIL:

An infirmary - with beds for overnight stay?

- 3. Yes - an infirmary with beds for overnight stay
- 9. Inap., other medical facilities available; NA

VAR 0252 INFIRM/BED OVRNGT JAIL MD=9
REF 0252 LOC 705 WIDTH 1 DK 11 COL 39

Q.23.4. What medical facilities are available IN THE JAIL:

Some other facility?

- 4. Yes - some other facility
- 9. Inap., other medical facilities available; NA

VAR 0253 OTHER MED FAC. IN JAIL MD=0
REF 0253 LOC 706 WIDTH 1 DK 11 COL 40

Q.23.5. What medical facilities are available IN THE JAIL:

Various other facilities?

- 5. Other facilities
- 6. Shared medical facilities of another jail
- 7. Has access to a hospital prison ward
- 8. Both shared facility and access to prison ward
- 9. Has other medical facilities and/or shared facility with another jail or access to hospital prison ward
- 0. Inap., other medical facilities available; NA

VAR 0254 JAIL HAVE DISPENSARY ? MD=9
REF 0254 LOC 707 WIDTH 1 DK 11 COL 41

-- FORM CJ3 ONLY --

Q.24. Does this facility have a dispensary in which medicines are kept for distribution to inmates upon doctor's orders?

- 1. Yes
- 2. No

(CONTINUED)

9. Inap., facility responded to Form CJ4; NA

VAR 0255 # INMT ON PRESCRIPTIONS MD=-1
REF 0255 LOC 708 WIDTH 4 DK 11 COL 42-45

-- FORM CJ3 --

Q.25. How many inmates are currently receiving medication under prescription? (Exclude non-prescription drugs such as aspirin, etc.)

-- FORM CJ4 --

Q.20. How many inmates are currently receiving medication under prescription? (Exclude non-prescription drugs such as aspirin, etc.)

Actual number is coded.

-1. NA

VAR 0256 HOW OFTEN JAIL SICK CALL MD=9
REF 0256 LOC 712 WIDTH 1 DK 11 COL 46

-- FORM CJ3 ONLY --

Q.26. How frequently does your jail have sick calls?

- 1. Once a week
- 2. Two to six times a week
- 3. Daily
- 4. Never
- 9. Inap., facility responded to Form CJ4; NA

VAR 0257 # MILE TO FAC.FOR EMERG MD=-1
REF 0257 LOC 713 WIDTH 3 DK 11 COL 47-49

-- FORM CJ3 --

Q.27. For medical emergencies requiring care which your jail can not provide, how many miles is it to the medical facility to which the inmate is usually taken?

-- FORM CJ4 --

Q.22. For medical emergencies requiring care which your jail can not provide, how many miles is it to the medical facility to which the inmate is usually taken?

Actual number is coded.

-1. NA

VAR 0258 DOCTORS AVAILABLE 24H/DA MD=9
REF 0258 LOC 716 WIDTH 1 DK 11 COL 50

-- FORM CJ3 --

Q.28.a(a). On a typical day, how many hours a day are the following medical personnel available WITHIN the JAIL:

Doctors - Twenty four hours a day?

-- FORM CJ4 --

Q.23.a(a). On a typical day, how many hours a day are the following medical personnel available WITHIN the JAIL:

Doctors - Twenty four hours a day?

1. Yes

9. No; Inap., available for other length of time; other medical personnel available; NA

VAR 0259 DOCTORS AVAILABLE 16H/DA MD=9
REF 0259 LOC 717 WIDTH 1 DK 11 COL 51

-- FORM CJ3 --

Q.28.b(a). On a typical day, how many hours a day are the following medical personnel available WITHIN the JAIL:

Doctors - Sixteen hours a day?

-- FORM CJ4 --

Q.23.b(a). On a typical day, how many hours a day are the following medical personnel available WITHIN the JAIL:

Doctors - Sixteen hours a day?

1. Yes

9. No; Inap., available for other length of time; other medical personnel available; NA

VAR 0260 DOCTORS AVAILABLE 8HR/DA MD=9
REF 0260 LOC 718 WIDTH 1 DK 11 COL 52

-- FORM CJ3 --

Q.28.c(a). On a typical day, how many hours a day are the following medical personnel available WITHIN the JAIL:

Doctors - Eight hours a day?

-- FORM CJ4 --

Q.23.c(a). On a typical day, how many hours a day are the following medical personnel available WITHIN the JAIL:

Doctors - Eight hours a day?

1. Yes

(CONTINUED)

9. No; Inap., available for other length of time;
other medical personnel available; NA

VAR 0261 DOCTORS AVAILABLE 4HR/DA MD=9
REF 0261 LOC 719 WIDTH 1 DK 11 COL 53

-- FORM CJ3 --

Q.28.d(a). On a typical day, how many hours a day are the
following medical personnel available WITHIN the JAIL:

Doctors - Four hours a day?

-- FORM CJ4 --

Q.23.d(a). On a typical day, how many hours a day are the
following medical personnel available WITHIN the JAIL:

Doctors - Four hours a day?

1. Yes

9. No; Inap., available for other length of time;
other medical personnel available; NA

VAR 0262 DOCTORS AVAILABLE <4H/DA MD=9
REF 0262 LOC 720 WIDTH 1 DK 11 COL 54

-- FORM CJ3 --

Q.28.e(a). On a typical day, how many hours a day are the
following medical personnel available WITHIN the JAIL:

Doctors - Daily but less than four hours?

-- FORM CJ4 --

Q.23.e(a). On a typical day, how many hours a day are the
following medical personnel available WITHIN the JAIL:

(CONTINUED)

Doctors - Daily but less than four hours?

1. Yes

9. No; Inap., available for other length of time;
other medical personnel available; NA

VAR 0263 DOCTORS AVAILBLE ON CALL MD=9
REF 0263 LOC 721 WIDTH 1 DK 11 COL 55

-- FORM CJ3 --

Q.28.f(a). On a typical day, how many hours a day are the
following medical personnel available WITHIN the JAIL:

Doctors - On call?

-- FORM CJ4 --

Q.23.f(a). On a typical day, how many hours a day are the
following medical personnel available WITHIN the JAIL:

Doctors - On call?

1. Yes

9. No; Inap., available for other length of time;
other medical personnel available; NA

VAR 0264 DOCTORS NEVER AVAILABLE MD=9
REF 0264 LOC 722 WIDTH 1 DK 11 COL 56

-- FORM CJ3 --

Q.28.g(a). On a typical day, how many hours a day are the
following medical personnel available WITHIN the JAIL:

Doctors - Never?

(CONTINUED)

-- FORM CJ4 --

Q.23.g(a). On a typical day, how many hours a day are the following medical personnel available WITHIN the JAIL:

Doctors - Never?

- 1. Yes
- 9. No; Inap., available for other length of time; other medical personnel available; NA

.....

VAR 0265	DOCTORS HAVE OTHER AVAIL	MD=9
REF 0265	LOC 723 WIDTH 1	DK 11 COL 57

-- FORM CJ3 --

Q.28(a). CENSUS USE ONLY On a typical day, how many hours a day are the following medical personnel available WITHIN the JAIL:

Doctors - Less than daily?

-- FORM CJ4 --

Q.23(a). CENSUS USE ONLY On a typical day, how many hours a day are the following medical personnel available WITHIN the JAIL:

Doctors - Less than daily?

- 1. Yes
- 9. No; Inap., available for other length of time; other medical personnel available; NA

VAR 0266	NURSES AVAILABLE 24H/DA	MD=9
REF 0266	LOC 724 WIDTH 1	DK 11 COL 58

-- FORM CJ3 --

Q.28.a(b). On a typical day, how many hours a day are the following medical personnel available WITHIN the JAIL:

Nurses - Twenty four hours a day?

-- FORM CJ4 --

Q.23.a(b). On a typical day, how many hours a day are the following medical personnel available WITHIN the JAIL:

Nurses - Twenty four hours a day?

- 1. Yes
- 9. No; Inap., available for other length of time; other medical personnel available; NA

.....

VAR 0267	NURSES AVAILABLE 16H/DA	MD=9
REF 0267	LOC 725 WIDTH 1	DK 11 COL 59

-- FORM CJ3 --

Q.28.b(b). On a typical day, how many hours a day are the following medical personnel available WITHIN the JAIL:

Nurses - Sixteen hours a day?

-- FORM CJ4 --

Q.23.b(b). On a typical day, how many hours a day are the following medical personnel available WITHIN the JAIL:

Nurses - Sixteen hours a day?

- 1. Yes

(CONTINUED)

9. No; Inap., available for other length of time;
available for other length of time;

.....
VAR 0268 NURSES AVAILABLE 8HR/DA MD=9
REF 0268 LOC 726 WIDTH 1 DK 11 COL 60

-- FORM CJ3 --

Q.28.c(b). On a typical day, how many hours a day are the
following medical personnel available WITHIN the JAIL:

Nurses - Eight hours a day?

-- FORM CJ4 --

Q.23.c(b). On a typical day, how many hours a day are the
following medical personnel available WITHIN the JAIL:

Nurses - Eight hours a day?

1. Yes

9. No; Inap., available for other length of time;
other medical personnel available; NA

.....
VAR 0269 NURSES AVAILABLE 4HR/DA MD=9
REF 0269 LOC 727 WIDTH 1 DK 11 COL 61

-- FORM CJ3 --

Q.28.d(b). On a typical day, how many hours a day are the
following medical personnel available WITHIN the JAIL:

Nurses - Four hours a day?

-- FORM CJ4 --

Q.23.d(b). On a typical day, how many hours a day are the
following medical personnel available WITHIN the JAIL:

(CONTINUED)

Nurses - Four hours a day?

1. Yes

9. No; Inap., available for other length of time;
other medical personnel available; NA

.....
VAR 0270 NURSES AVAILABLE <4H/DA MD=9
REF 0270 LOC 728 WIDTH 1 DK 11 COL 62

-- FORM CJ3 --

Q.28.e(b). On a typical day, how many hours a day are the
following medical personnel available WITHIN the JAIL:

Nurses - Daily but less than four hours?

-- FORM CJ4 --

Q.23.e(b). On a typical day, how many hours a day are the
following medical personnel available WITHIN the JAIL:

Nurses - Daily but less than four hours?

1. Yes

9. No; Inap., available for other length of time;
other medical personnel available; NA

.....
VAR 0271 NURSES AVAILBLE ON CALL MD=9
REF 0271 LOC 729 WIDTH 1 DK 11 COL 63

-- FORM CJ3 --

Q.28.f(b). On a typical day, how many hours a day are the
following medical personnel available WITHIN the JAIL:

Nurses - On call?

(CONTINUED)

-- FORM CJ4 --

Q.23.f(b). On a typical day, how many hours a day are the following medical personnel available WITHIN the JAIL:

Nurses - On call?

- 1. Yes
- 9. No; Inap., available for other length of time; other medical personnel available; NA

.....

VAR 0272	NURSES NEVER AVAILABLE	MD=9
REF 0272	LOC 730 WIDTH 1	DK 11 COL 64

-- FORM CJ3 --

Q.28.g(b). On a typical day, how many hours a day are the following medical personnel available WITHIN the JAIL:

Nurses - Never?

-- FORM CJ4 --

Q.23.g(b). On a typical day, how many hours a day are the following medical personnel available WITHIN the JAIL:

Nurses - Never?

- 1. Yes
- 9. No; Inap., available for other length of time; other medical personnel available; NA

.....

VAR 0273	NURSES HAVE OTHER AVAIL	MD=9
REF 0273	LOC 731 WIDTH 1	DK 11 COL 65

-- FORM CJ3 --

(CONTINUED)

Q.28(b). CENSUS USE ONLY On a typical day, how many hours a day are the following medical personnel available WITHIN the JAIL:

Nurses - Less than daily?

-- FORM CJ4 --

Q.23(b). CENSUS USE ONLY On a typical day, how many hours a day are the following medical personnel available WITHIN the JAIL:

Nurses - Less than daily?

- 1. Yes
- 2. Matron also serves as a nurse
- 9. No; Inap., available for other length of time; other medical personnel available; NA

.....

VAR 0274	PARAMED AVAILABLE 24H/DA	MD=9
REF 0274	LOC 732 WIDTH 1	DK 11 COL 66

-- FORM CJ3 --

Q.28.a(c). On a typical day, how many hours a day are the following medical personnel available WITHIN the JAIL:

Paramedics - Twenty four hours a day?

-- FORM CJ4 --

Q.23.a(c). On a typical day, how many hours a day are the following medical personnel available WITHIN the JAIL:

Paramedics - Twenty four hours a day?

- 1. Yes
- 9. No; Inap., available for other length of time; other medical personnel available; NA

VAR 0275 PARAMED AVAILABLE 16H/DA MD=9
REF 0275 LOC 733 WIDTH 1 DK 11 COL 67

-- FORM CJ3 --

Q.28.b(c). On a typical day, how many hours a day are the following medical personnel available WITHIN the JAIL:

Paramedics - Sixteen hours a day?

-- FORM CJ4 --

Q.23.b(c). On a typical day, how many hours a day are the following medical personnel available WITHIN the JAIL:

Paramedics - Sixteen hours a day?

- 1. Yes
- 9. No; Inap., available for other length of time; other medical personnel available; NA

VAR 0276 PARAMED AVAILABLE 8HR/DA MD=9
REF 0276 LOC 734 WIDTH 1 DK 11 COL 68

-- FORM CJ3 --

Q.28.c(c). On a typical day, how many hours a day are the following medical personnel available WITHIN the JAIL:

Paramedics - Eight hours a day?

-- FORM CJ4 --

Q.23.c(c). On a typical day, how many hours a day are the following medical personnel available WITHIN the JAIL:

Paramedics - Eight hours a day?

- 1. Yes

(CONTINUED)

9. No; Inap., available for other length of time; other medical personnel available; NA

VAR 0277 PARAMED AVAILABLE 4HR/DA MD=9
REF 0277 LOC 735 WIDTH 1 DK 11 COL 69

-- FORM CJ3 --

Q.28.d(c). On a typical day, how many hours a day are the following medical personnel available WITHIN the JAIL:

Paramedics - Four hours a day?

-- FORM CJ4 --

Q.23.d(c). On a typical day, how many hours a day are the following medical personnel available WITHIN the JAIL:

Paramedics - Four hours a day?

- 1. Yes
- 9. No; Inap., available for other length of time; other medical personnel available; NA

VAR 0278 PARAMED AVAILABLE <4H/DA MD=9
REF 0278 LOC 736 WIDTH 1 DK 11 COL 70

-- FORM CJ3 --

Q.28.e(c). On a typical day, how many hours a day are the following medical personnel available WITHIN the JAIL:

Paramedics - Daily but less than four hours?

-- FORM CJ4 --

Q.23.e(c). On a typical day, how many hours a day are the following medical personnel available WITHIN the JAIL:

(CONTINUED)

Paramedics - Daily but less than four hours?

- 1. Yes
- 9. No; Inap., available for other length of time; other medical personnel available; NA

.....

VAR 0279	PARAMED ON CALL		MD=9
REF 0279	LOC 737 WIDTH 1	DK 11 COL 71	

-- FORM CJ3 --

Q.28.f(c). On a typical day, how many hours a day are the following medical personnel available WITHIN the JAIL:

Paramedics - On call?

-- FORM CJ4 --

Q.23.f(c). On a typical day, how many hours a day are the following medical personnel available WITHIN the JAIL:

Paramedics - On call?

- 1. Yes
- 9. No; Inap., available for other length of time; other medical personnel available; NA

.....

VAR 0280	PARAMED NEVER AVAILABLE		MD=9
REF 0280	LOC 738 WIDTH 1	DK 11 COL 72	

-- FORM CJ3 --

Q.28.g(c). On a typical day, how many hours a day are the following medical personnel available WITHIN the JAIL:

Paramedics - Never?

(CONTINUED)

-- FORM CJ4 --

Q.23.g(c). On a typical day, how many hours a day are the following medical personnel available WITHIN the JAIL:

Paramedics - Never?

- 1. Yes
- 9. No; Inap., available for other length of time; other medical personnel available; NA

.....

VAR 0281	PARAMED OTHER AVAIL		MD=9
REF 0281	LOC 739 WIDTH 1	DK 11 COL 73	

-- FORM CJ3 --

Q.28(c). CENSUS USE ONLY On a typical day, how many hours a day are the following medical personnel available WITHIN the JAIL:

Paramedics - Less than daily?

-- FORM CJ4 --

Q.23(c). CENSUS USE ONLY On a typical day, how many hours a day are the following medical personnel available WITHIN the JAIL:

Paramedics - Less than daily?

- 1. Yes
- 2. Deputy or custodial guard who is an EMT (Emergency Medical Technician)
- 9. No; Inap., available for other length of time; other medical personnel available; NA

VAR 0282 LICENSED DR. ASSUME RESP MD=9
REF 0282 LOC 740 WIDTH 1 DK 11 COL 74

-- FORM CJ3 ONLY --

Q.29. Does a licensed physician(s) assume responsibility for the availability and quality of all medical services rendered to the inmates of your jail?

- 1. Yes
- 2. No

9. Inap., facility responded to Form CJ4; NA

VAR 0283 1977 # AD ML TOTAL DEATH MD=-1
REF 0283 LOC 741 WIDTH 2 DK 11 COL 75-76

-- FORM CJ3 --

Q.30.1(a). For the calendar year 1977, please report the number of inmates who died while confined in this facility: [TOTAL number of ADULT MALE deaths]

-- FORM CJ4 --

Q.24.a(a). For the calendar year 1977, please report the number of inmates who died while confined in this facility: [TOTAL number of ADULT MALE deaths]?

Actual number is coded.

- 1. None; Inap., no male adults in facility; NA

VAR 0284 1977 # AD ML NAT. CAUSES MD=-1
REF 0284 LOC 743 WIDTH 2 DK 11 COL 77-78

-- FORM CJ3 --

Q.30.2.a(a). For the calendar year 1977, please report the number of inmates who died while confined in this facility: [ADULT MALE deaths due to illness or natural causes]?

-- FORM CJ4 --

Q.24.1.b(a). For the calendar year 1977, please report the number of inmates who died while confined in this facility: [ADULT MALE deaths due to illness or natural causes]?

Actual number is coded.

- 1. None; no adult males in facility; NA

VAR 0285 1977 # AD ML SUICIDES MD=-1
REF 0285 LOC 745 WIDTH 2 DK 11 COL 79-80

-- FORM CJ3 --

Q.30.2.b(a). For the calendar year 1977, please report the number of inmates who died while confined in this facility: [ADULT MALE deaths due to suicide]?

-- FORM CJ4 --

Q.24.b.2(a). For the calendar year 1977, please report the number of inmates who died while confined in this facility: [ADULT MALE deaths due to suicide]?

Actual number is coded.

- 1. None; no adult males in facility; NA

DECK IDENTIFICATION NUMBER IS '12'

DK 12 COL 1- 2

VAR 0001 ICPSR STUDY NUMBER-7737 NO MISSING DATA CODES
REF 0001 LOC 1 WIDTH 4 DK 12 COL 3- 6

ICPSR Study Number-7737

7737. The ICPSR has attached this number as a unique data collection identification number.

VAR 0002 ICPSR EDITION NUMBER-3 NO MISSING DATA CODES
REF 0002 LOC 5 WIDTH 1 DK 12 COL 7

ICPSR Edition Number-3

The number identifying the release edition of the data collection.

3. Third ICPSR edition; summer, 1984 release

VAR 0003 ICPSR PART NUMBER-1 NO MISSING DATA CODES
REF 0003 LOC 6 WIDTH 1 DK 12 COL 8

ICPSR Part Number-1

The number identifying this part of a one-part data collection.

1. The entire data collection is contained in one part

VAR 0004 ICPSR SEQUENTIAL ID NO MISSING DATA CODES
REF 0004 LOC 7 WIDTH 4 DK 12 COL 9-12

ICPSR Sequential Case Identification Number

The ICPSR has attached a sequential case identification number to uniquely identify each case.

VAR 0286 1977 # AD ML ACC INJURY MD=-1
REF 0286 LOC 747 WIDTH 2 DK 12 COL 13-14

-- FORM CJ3 --

Q.30.2.c(a). For the calendar year 1977, please report the number of inmates who died while confined in this facility: [ADULT MALE deaths due to accidental injury to self]?

-- FORM CJ4 --

Q.24.b.3(a). For the calendar year 1977, please report the number of inmates who died while confined in this facility: [ADULT MALE deaths due to accidental injury to self]?

Actual number is coded.

-1. None; no adult males in facility; NA

VAR 0287 1977 # AD ML INJ OTH PER MD=-1
REF 0287 LOC 749 WIDTH 2 DK 12 COL 15-16

-- FORM CJ3 --

Q.30.2.d(a). For the calendar year 1977, please report the number of inmates who died while confined in this facility: [ADULT MALE deaths due to injury by another person]?

(CONTINUED)

-- FORM CJ4 --

Q.24.b.4(a). For the calendar year 1977, please report the number of inmates who died while confined in this facility: [ADULT MALE deaths due to injury by another person]?

Actual number is coded.

-1. None; no adult males in facility; NA
.....

VAR 0288	1977 # AD ML OTHER DEATH	MD=-1
REF 0288	LOC 751 WIDTH 2	DK 12 COL 17-18

-- FORM CJ3 --

Q.30.2.e(a). For the calendar year 1977, please report the number of inmates who died while confined in this facility: [ADULT MALE deaths due to some other reason]?

-- FORM CJ4 --

Q.24.b.5(a). For the calendar year 1977, please report the number of inmates who died while confined in this facility: [ADULT MALE deaths due to some other reason]?

Actual number is coded.

-1. None; no adult males in facility; NA
.....

VAR 0289	1977 # AD FML TOT DEATH	MD=-1
REF 0289	LOC 753 WIDTH 2	DK 12 COL 19-20

-- FORM CJ3 --

Q.30.1(b). For the calendar year 1977, please report the

(CONTINUED)

number of inmates who died while confined in this facility: [TOTAL number of ADULT FEMALE deaths]?

-- FORM CJ4 --

Q.24.a(b). For the calendar year 1977, please report the number of inmates who died while confined in this facility: [TOTAL number of ADULT FEMALE deaths]?

Actual number is coded.

-1. None; no adult females in facility; NA
.....

VAR 0290	1977 # AD FML NAT.CAUSES	MD=-1
REF 0290	LOC 755 WIDTH 2	DK 12 COL 21-22

-- FORM CJ3 --

Q.30.2.a(b). For the calendar year 1977, please report the number of inmates who died while confined in this facility: [ADULT FEMALE deaths due to illness or natural causes]?

-- FORM CJ4 --

Q.24.1.b(b). For the calendar year 1977, please report the number of inmates who died while confined in this facility: [ADULT FEMALE deaths due to illness or natural causes]?

Actual number is coded.

-1. None; no adult females in facility; NA

VAR 0291 1977 # AD FML SUICIDES MD=-1
REF 0291 LOC 757 WIDTH 2 DK 12 COL 23-24

-- FORM CJ3 --

Q.30.2.b(b). For the calendar year 1977, please report the number of inmates who died while confined in this facility: [ADULT FEMALE deaths due to suicide]?

-- FORM CJ4 --

Q.24.b.2(b). For the calendar year 1977, please report the number of inmates who died while confined in this facility: [ADULT FEMALE deaths due to suicide]?

Actual number is coded.

-1. None; no adult females in facility; NA

.....
VAR 0292 1977 # AD FML ACC INJURY MD=-1
REF 0292 LOC 759 WIDTH 2 DK 12 COL 25-26

-- FORM CJ3 --

Q.30.2.c(b). For the calendar year 1977, please report the number of inmates who died while confined in this facility: [ADULT FEMALE deaths due to accidental injury to self]?

-- FORM CJ4 --

Q.24.b.3(b). For the calendar year 1977, please report the number of inmates who died while confined in this facility: [ADULT FEMALE deaths due to accidental injury to self]?

Actual number is coded.

-1. None; no adult females in facility; NA

VAR 0293 1977 # AD FML INJ OTH PE MD=-1
REF 0293 LOC 761 WIDTH 2 DK 12 COL 27-28

-- FORM CJ3 --

Q.30.2.d(b). For the calendar year 1977, please report the number of inmates who died while confined in this facility: [ADULT FEMALE deaths due to injury by another person]?

-- FORM CJ4 --

Q.24.b.4(b). For the calendar year 1977, please report the number of inmates who died while confined in this facility: [ADULT FEMALE deaths due to injury by another person]?

Actual number is coded.

-1. None; no adult females in facility; NA

.....
VAR 0294 1977 # AD FML OTHR DEATH MD=-1
REF 0294 LOC 763 WIDTH 2 DK 12 COL 29-30

-- FORM CJ3 --

Q.30.2.e(b). For the calendar year 1977, please report the number of inmates who died while confined in this facility: [ADULT FEMALE deaths due to some other reason]?

-- FORM CJ4 --

Q.24.b.5(b). For the calendar year 1977, please report the number of inmates who died while confined in this facility: [ADULT FEMALE deaths due to some other reason]?

Actual number is coded.

-1. None; no adult females in facility; NA

VAR 0295 1977 # JUVEN TOT DEATHS MD=-1
REF 0295 LOC 765 WIDTH 2 DK 12 COL 31-32

-- FORM CJ3 --

Q.30.1(c). For the calendar year 1977, please report the number of inmates who died while confined in this facility: [TOTAL number of JUVENILE deaths]?

-- FORM CJ4 --

Q.24.a(c). For the calendar year 1977, please report the number of inmates who died while confined in this facility: [TOTAL number of JUVENILE deaths]?

Actual number is coded.

-1. None; no juveniles in facility; NA

VAR 0296 1977 # JUVEN NAT. CAUSES MD=-1
REF 0296 LOC 767 WIDTH 2 DK 12 COL 33-34

-- FORM CJ3 --

Q.30.2.a(c). For the calendar year 1977, please report the number of inmates who died while confined in this facility: [JUVENILE deaths due to illness or natural causes]?

-- FORM CJ4 --

Q.24.1.b(c). For the calendar year 1977, please report the number of inmates who died while confined in this facility: [JUVENILE deaths due to illness or natural causes]?

Actual number is coded.

-1. None; no juveniles in facility; NA

VAR 0297 1977 # JUVEN SUICIDES MD=-1
REF 0297 LOC 769 WIDTH 2 DK 12 COL 35-36

-- FORM CJ3 --

Q.30.2.b(c). For the calendar year 1977, please report the number of inmates who died while confined in this facility: [JUVENILE deaths due to suicide]?

-- FORM CJ4 --

Q.24.b.2(c). For the calendar year 1977, please report the number of inmates who died while confined in this facility: [JUVENILE deaths due to suicide]?

Actual number is coded.

-1. None; no juveniles in facility; NA

VAR 0298 1977 # JUVEN ACC INJURY MD=-1
REF 0298 LOC 771 WIDTH 2 DK 12 COL 37-38

-- FORM CJ3 --

Q.30.2.c(c). For the calendar year 1977, please report the number of inmates who died while confined in this facility: [JUVENILE deaths due to accidental injury to self]?

-- FORM CJ4 --

Q.24.b.3(c). For the calendar year 1977, please report the number of inmates who died while confined in this facility: [JUVENILE deaths due to accidental injury to self]?

Actual number is coded.

-1. None; no juveniles in facility; NA

VAR 0299
REF 0299

1977 # JUVEN INJ OTHR PE
LOC 773 WIDTH 2

MD=-1
DK 12 COL 39-40

-- FORM CJ3 --

Q.30.2.d(c). For the calendar year 1977, please report the number of inmates who died while confined in this facility: [JUVENILE deaths due to injury by another person]?

-- FORM CJ4 --

Q.24.b.4(c). For the calendar year 1977, please report the number of inmates who died while confined in this facility: [JUVENILE deaths due to injury by another person]?

Actual number is coded.

-1. None; no juveniles in facility; NA

VAR 0300
REF 0300

1977 # JUVEN OTHER DEATH
LOC 775 WIDTH 2

MD=-1
DK 12 COL 41-42

-- FORM CJ3 --

Q.30.2.e(c). For the calendar year 1977, please report the number of inmates who died while confined in this facility: [JUVENILE deaths due to some other reason]?

-- FORM CJ4 --

Q.24.b.5(c). For the calendar year 1977, please report the number of inmates who died while confined in this facility: [JUVENILE deaths due to some other reason]?

Actual number is coded.

-1. None; no juveniles in facility; NA

END