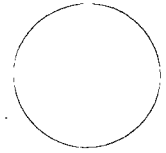




NORTH DAKOTA
Office of Attorney General
Bureau of Criminal Investigation



Crime in North Dakota, 1999

186567

Attorney General
Heidi Heitkamp

186567

Office of Attorney General

Bureau of Criminal Investigation

Crime in North Dakota, 1999

UNIVERSITY OF
NORTH DAKOTA LIBRARY SERVICE (NDSLS)
1010 UNIVERSITY AVENUE
GRAND FORK, ND 58202-8001

A Summary of Uniform Crime Report Data

**Heidi Heitkamp
Attorney General**

**Prepared by
Judith H. Volk
Research Analyst
2000**

Data collection, report preparation and publication of this report are supported by a grant from the Bureau of Justice Statistics, U.S. Department of Justice

INTRODUCTION

The North Dakota Uniform Crime Reporting (UCR) program involves the collection, compilation, and analysis of crime and arrest statistics reported by the various local law enforcement agencies throughout the state. Forty-six sheriffs' departments and 38 police departments reported to the UCR program in 1999.

Law enforcement agencies may report UCR data in two ways:

INCIDENT-BASED REPORTING: Law enforcement agencies use a standard incident form to collect data on each incident reported to their respective agencies. This form collects much more detailed information than is collected using summary reporting. Data collected includes: type of incident, where and when the incident took place, victim characteristics, suspect/arrestee characteristics, property involved in the incident, etc. A total of seventy-seven police departments and sheriffs' departments reported incident data for all or part of 1999.

In order to continue the statistical time-series begun with summary reporting, computer programs were written to extract summary data from the incident data reported. Crime in North Dakota, 1999 is a report on summary data.

SUMMARY REPORTING: Law enforcement agencies use a tally system to report the number of crime index offenses and arrests for each month. Seven law enforcement agencies reported summary data in 1999.

The federal counterpart of the North Dakota UCR program is the National UCR program under the direction of the Federal Bureau of Investigation (FBI). The UCR program has been used nationally and in North Dakota for many years to measure the extent, distribution and fluctuation of crime through the crime index. The crime index is not an absolute measure, but rather an indication of the amount and type of crime occurring in any given jurisdiction. The index is composed of seven crimes that are sub-classified as follows:

VIOLENT CRIME: Murder/Non-Negligent Manslaughter
 Forcible Rape
 Robbery
 Aggravated Assault

PROPERTY CRIME: Burglary
 Larceny/Theft
 Motor Vehicle Theft

A Modified Crime Index is also calculated at the federal level. This includes arson as the fourth property crime and the eighth index offense. Data on arson is not included in this report.

Prior to an offense becoming recorded in the UCR program, it must first be brought to the attention of local law enforcement officials and then must be reported by the local agency to the UCR program. Therefore, the UCR program can only reflect crime indirectly in its reports as the statistics gathered in the program are based on reported crimes only. No one can state precisely how much crime goes unreported each year. Reporting of crimes depends on several factors,

including actual perception of an act as a crime, the probability of loss of status for reporting (as in cases of rape), and the perceived probability of action on the part of the law enforcement agency contacted.

Several types of data are gathered, including:

Offense data

- Number of known crime index offenses
- Type and value of stolen property
- Additional information on homicides and arson
- Law enforcement officers killed or assaulted

Arrest and Clearance Data

- Number and type of offenses cleared
- Number and type of index offenses involving juveniles cleared
- Number of persons arrested, by offense
- Characteristics of persons arrested (age, sex, race)

To allow for comparison among several geographic or jurisdictional areas with differing populations or to allow comparisons across time in an area undergoing population fluctuations, the UCR program provides for the calculation of crime rates to remove any potential biases created by population differences. Because a rate relates the incidence of activity to population, it is possible to measure annual fluctuations in criminal activity by comparing rates of crime reported in any given year with those reported in other years. National publications report crime rates calculated based on the number of reported offenses per 100,000 population. This publication provides crime rate information calculated in the same manner.

TABLE OF CONTENTS

Introduction	i
Table of Contents	iii
North Dakota Crime Summary, 1999	v
Crime Index Offense Analysis	1
Violent Crime	7
Murder/Non-Negligent Manslaughter	9
Forcible Rape	11
Robbery	13
Aggravated Assault	16
Property Crime	18
Burglary	20
Larceny/Theft	23
Motor Vehicle Theft	26
Crime Index Offenses by Reporting Jurisdiction	29
Arrest Analysis	33
Arrests in 1999	35
Arrest Analysis by Reporting Jurisdiction	41
Arrests 1990-1999	44
Drug Arrest Analysis	50
DUI Arrest Analysis	54
UCR Offense Definitions	57
Full-Time Law Enforcement Employees	63

(This page intentionally left blank.)

NORTH DAKOTA CRIME SUMMARY, 1999

In 1999, 14,590 crime index offenses were reported by local law enforcement agencies. This is a decrease of 11.8 percent from the total of 16,537 reported in 1998.

Crime index offenses include: murder/non-negligent manslaughter, forcible rape, robbery, aggravated assault, burglary, larceny/theft, and motor vehicle theft.

The Census Bureau estimate of North Dakota's population for 1999 is 634,000. The index crime rate per 100,000 population for 1999 was 2301.3. The index crime rate for 1998 was 2592.0 per 100,000 population. This is an 11.2 percent decline in the crime rate.

The total number of reported violent index crimes (murder, rape, robbery, and aggravated assault) was 445. This represents a decrease of 21.4 percent from the total of 566 reported in 1998.

Violent crime accounted for 3.1 percent of total index crimes reported in 1999.

Collectively, property crimes (burglary, larceny/theft and motor vehicle theft) decreased by 11.4 percent from 15,971 reported in 1998 to 14,145 reported in 1999.

Property crime accounted for 96.9 percent of total crime index offenses reported in 1999.

The 10,956 larceny/theft offenses reported in 1999 accounted for 75 percent of total index crimes.

Over \$11.2 million worth of property was reported stolen in 1999, with approximately 29 percent of that amount reported as recovered by law enforcement officials.

North Dakota law enforcement agencies reported 30,258 arrests in 1999. A total of 33,548 arrests were reported in 1998.

Approximately 28 percent of total arrests in 1999 were arrests of juveniles. Fifty-one percent of arrests for crime index offenses were arrests of juveniles.

Juveniles were arrested most often for liquor law violations, while adults were arrested most often for driving under the influence (DUI).

The number of arrests for DUI decreased slightly from 5,187 reported in 1998 to 5,179 reported in 1999.

Arrests for drug offenses decreased four percent from a 1998 total of 1,517 to 1,456 in 1999.

(This page intentionally left blank.)

CRIME INDEX OFFENSE ANALYSIS

(This page intentionally left blank.)

Crime Index Offenses

Crime index offenses include the violent crimes of murder/non-negligent manslaughter, forcible rape, robbery, and aggravated assault, and the property crimes of burglary, larceny/theft, and motor vehicle theft.

In 1999, 14,590 crime index offenses were reported by local law enforcement agencies. This is a decrease of 11.8 percent from the total of 16,537 reported in 1998.

The Census Bureau estimate of North Dakota's population for 1999 is 634,000. The index crime rate per 100,000 population for 1999 was 2301.3, as compared to 2592.0 for 1998. See the crime index offense summary on page 5 for crime rate information for the period 1990-1999.

Approximately 27 percent of crime index offenses were reported as cleared by arrest or exceptional means. The UCR program defines an offense as "cleared" by law enforcement when at least one person is arrested, charged with the commission of the offense, and turned over to the court for prosecution. Several crimes may be cleared by the arrest of one person, while the arrests of many persons may clear only one offense. Law enforcement agencies may clear a crime by exceptional means when some element beyond law enforcement control precludes the placing of formal charges against the offender. Examples of circumstances that allow such clearances are the death of the offender (suicide, justifiably killed by police or private citizen, etc.); the victim's refusal to cooperate with prosecution after the offender has been identified; or the denial of extradition.

In 1999, 3,191 arrests were reported for crime index offenses. Fifty-one percent of that total were arrests of juveniles.

Over \$11.2 million worth of property was reported stolen in 1999, with 28.6 percent of that amount reported as recovered by law enforcement officials.

Crime Index Offenses Reported, 1999

Crime Index Offense	Number Reported	Percent of Total Index Offenses
Murder/Non-Negligent Manslaughter	11	0.1 %
Forcible Rape	147	1.0
Robbery	70	0.5
Aggravated Assault	217	1.5
Violent Crime Subtotal	445	3.1
Burglary	2,200	15.0
Larceny/Theft	10,956	75.1
Motor Vehicle Theft	989	6.8
Property Crime Subtotal	14,145	96.9
Crime Index Offense Total	14,590	100.0

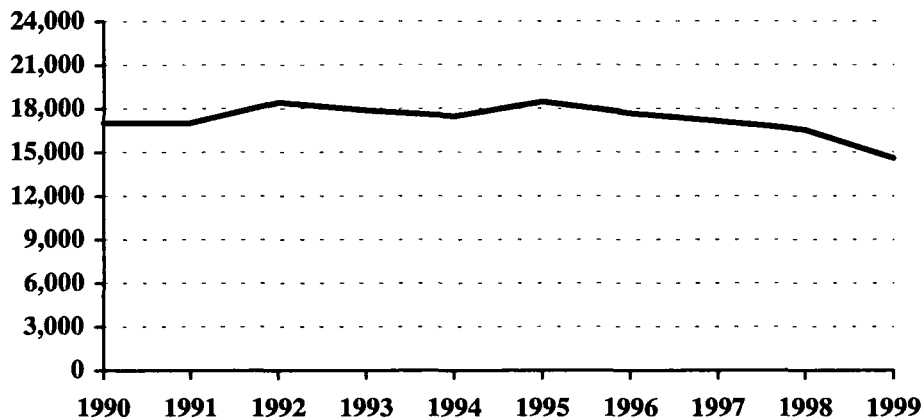
Comparison of Crime Index Offenses Reported, 1998-1999

Crime Index Offense	1998	1999	Percent Change
Murder/Non-Negligent Manslaughter	7	11	57.1 %
Forcible Rape	169	147	-13.0
Rape by Force	160	139	-13.1
Attempts to Rape	9	8	-11.1
Robbery	78	70	-10.3
Firearm	14	16	14.3
Knife or Cutting Instrument	9	3	-66.7
Other Dangerous Weapon	17	11	-35.3
Strong Arm – No Weapon	38	40	5.3
Aggravated Assault	312	217	-30.4
Firearm	8	9	12.5
Knife or Cutting Instrument	45	45	0.0
Other Dangerous Weapon	94	67	-28.7
Hands, Fists, Feet, Etc.	165	96	-41.8
Violent Crime Subtotal	566	445	-21.4
Burglary	2,194	2,200	0.3
Forcible Entry	1,288	1,268	-1.6
Unlawful Entry – No Force	725	739	1.9
Attempted Forcible Entry	181	193	6.6
Larceny/Theft	12,704	10,956	-13.8
Motor Vehicle Theft	1,073	989	-7.8
Autos	850	814	-4.2
Trucks and Buses	106	99	-6.6
Other Vehicles	117	76	-35.0
Property Crime Subtotal	15,971	14,145	-11.4
Crime Index Offense Total	16,537	14,590	-11.8

Crime Index Offenses, 1990-1999

Crime Index Offense	1990	1991	1992	1993	1994	1995	1996	1997	1998	1999
Murder/Non-Neg. Mansl.	8	11	15	22	5	9	12	10	7	11
Forcible Rape	98	120	162	150	154	151	175	150	169	147
Robbery	36	47	52	54	70	64	72	45	78	70
Aggravated Assault	223	223	349	332	299	360	335	344	312	217
Burglary	2357	2305	2440	2346	2080	2275	2008	2271	2194	2200
Larceny/Theft	13505	13543	14390	14031	13898	14435	13898	13163	12704	10956
Motor Vehicle Theft	794	772	1023	940	981	1164	1182	1139	1073	989
Crime Index Offense Total	17021	17021	18431	17875	17487	18458	17682	17122	16537	14590

Crime Index Offense Totals, 1990-1999



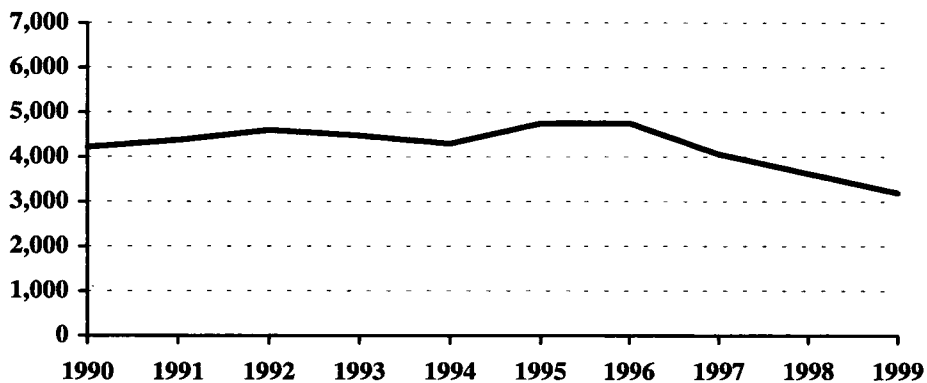
Crime Index Offense Summary

Year	Population	Crime Index Offense Total	% Change in Number from Previous Year	Crime Rate per 100,000 Population	% Change in Rate from Previous Year	Percent Cleared
1990	638,800	17,021	1.9 %	2664.5	5.3 %	29.5 %
1991	635,000	17,021	0.0	2680.5	0.6	26.2
1992	636,000	18,431	8.3	2898.0	8.1	25.9
1993	635,000	17,875	-3.0	2815.0	-2.9	26.7
1994	638,000	17,487	-2.2	2740.9	-2.6	25.7
1995	641,000	18,458	5.6	2879.6	5.1	28.1
1996	644,000	17,682	-4.2	2745.7	-4.6	29.9
1997	641,000	17,122	-3.2	2671.1	-2.7	29.0
1998	638,000	16,537	-3.4	2592.0	-3.0	26.5
1999	634,000	14,590	-11.8	2301.3	-11.2	27.2

Arrests for Crime Index Offenses, 1990-1999

Year	Juvenile	Adult	Age Not Reported	Total
1990	1,977	2,241		4,218
1991	2,332	2,007	33	4,372
1992	2,506	2,063	28	4,597
1993	2,393	2,051	33	4,477
1994	2,324	1,926	43	4,293
1995	2,642	2,083	21	4,746
1996	2,523	2,221	11	4,755
1997	2,252	1,783	26	4,061
1998	1,803	1,813	12	3,628
1999	1,640	1,543	8	3,191

Arrests for Crime Index Offenses, 1990-1999



Property Loss Due to Crime Index Offenses, 1990-1999

Year	Population	Total Property Loss	% Change from Previous Year	Property Loss per Capita	Percent Recovered
1990	638,800	\$11,115,640	34.7 %	\$ 17.40	31.0 %
1991	635,000	8,443,034	-24.0	13.30	32.0
1992	636,000	11,216,943	32.9	17.64	22.8
1993	635,000	9,439,645	-15.8	14.87	33.6
1994	638,000	9,696,414	2.7	15.20	48.2
1995	641,000	11,070,248	14.2	17.27	32.2
1996	644,000	11,022,665	-0.4	17.12	34.4
1997	641,000	12,507,812	13.5	19.51	33.3
1998	638,000	11,429,270	-8.6	17.91	30.8
1999	634,000	11,201,544	-2.0	17.67	28.6

Violent Crime

Violent crime includes the offenses of murder/non-negligent manslaughter, forcible rape, robbery, and aggravated assault. (See the UCR offense definitions section beginning on page 57 of this publication for definitions of these and other offenses.)

In 1999, 445 violent crimes were reported in North Dakota. This is a 21.4 percent decrease from the 1998 total of 566 violent offenses reported.

Violent crime comprised 3.1 percent of reported crime index offenses in North Dakota in 1999.

The violent crime rate for 1999 is 70.2 per 100,000, as compared to 88.7 per 100,000 in 1998. This is a 20.9 percent decrease in the violent crime rate.

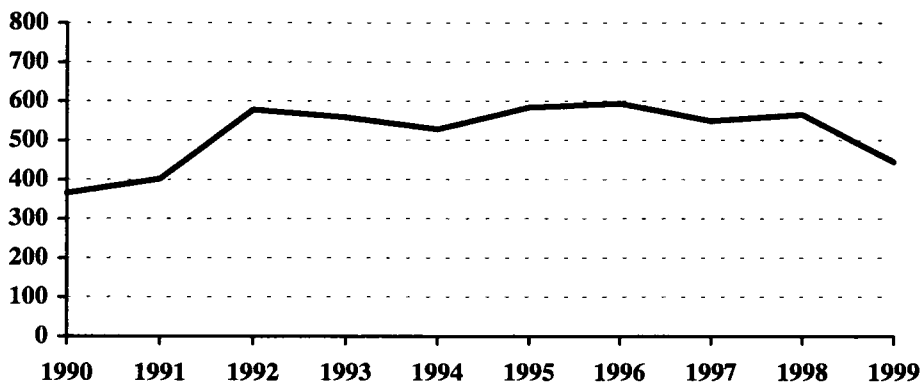
Approximately 67 percent of violent crimes were reported as cleared by arrest or exceptional means in 1999.

A total of 166 arrests was reported for violent crimes. Of those, 24.7 percent were arrests of juveniles.

Violent Crime Summary

Year	Population	Violent Index Offenses	% Change in Number from Previous Year	Rate per 100,000 Population	% Change in Rate from Previous Year	Percent Cleared
1990	638,800	365	-11.8 %	57.1	-8.9 %	62.2 %
1991	635,000	401	9.9	63.1	10.5	56.1
1992	636,000	578	44.1	90.9	44.1	59.0
1993	635,000	558	-3.5	87.9	-3.3	64.0
1994	638,000	528	-5.4	82.8	-5.8	55.9
1995	641,000	584	10.6	91.1	10.0	67.6
1996	644,000	594	1.7	92.2	1.2	73.2
1997	641,000	549	-7.6	85.6	-7.2	66.8
1998	638,000	566	3.1	88.7	3.6	61.7
1999	634,000	445	-21.4	70.2	-20.9	67.0

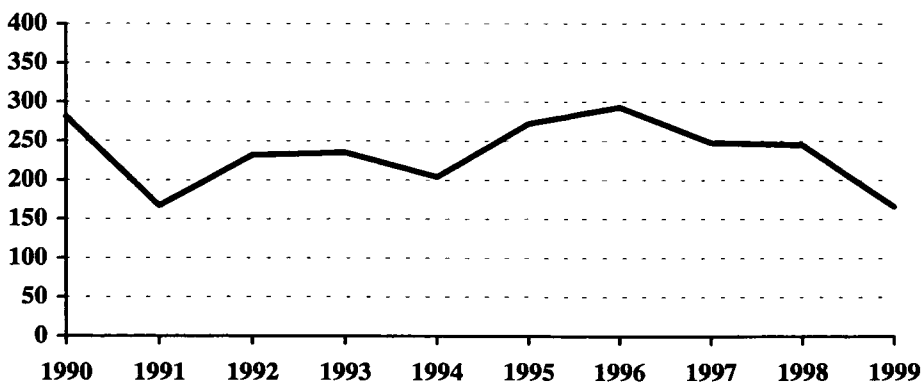
Violent Crime Totals, 1990-1999



Arrests for Violent Crimes, 1990-1999

Year	Juvenile	Adult	Age Not Reported	Total
1990	44	237		281
1991	41	121	5	167
1992	51	178	3	232
1993	71	162	2	235
1994	58	144	2	204
1995	106	164	2	272
1996	68	224	1	293
1997	54	193	1	248
1998	68	177		245
1999	41	124	1	166

Arrests for Violent Crimes, 1990-1999



Murder/Non-Negligent Manslaughter

The UCR program defines Murder/Non-Negligent Manslaughter as the “willful killing of one human being by another.” Attempts to murder, assaults to murder, suicides, accidental deaths, justifiable homicides, and deaths caused by gross negligence are not included in this category.

Eleven murder/non-negligent manslaughter deaths were known to the North Dakota UCR program in 1999.

Ten of the victims were adults. “Adult” is defined as a person aged 18 years or older.

Seven of the victims were male.

Five victims died as the result of gunshot wounds. (See the summary of homicide incidents and the weapons involved on page 10.)

The Office of Attorney General publishes a detailed report titled Homicide in North Dakota. The report provides an analysis of homicides for the period 1978-1999 and is available by request.

Murder/Non-Negligent Manslaughter Summary

Year	Population	Offense Total	% Change in Number from Previous Year	Rate per 100,000 Population	% Change in Rate from Previous Year	Percent Cleared
1990	638,800	8	-11.1 %	1.3	-7.1 %	87.5 %
1991	635,000	11	37.5	1.7	30.8	81.8
1992	636,000	15	36.4	2.4	41.2	100.0
1993	635,000	22	46.7	3.5	45.8	100.0
1994	638,000	5	-77.3	0.8	-77.1	100.0
1995	641,000	9	80.0	1.4	75.0	100.0
1996	644,000	12	33.3	1.9	35.7	100.0
1997	641,000	10	-16.7	1.6	-15.8	100.0
1998	638,000	7	-30.0	1.1	-31.3	100.0
1999	634,000	11	57.1	1.7	54.5	100.0

Murder/Non-Negligent Manslaughter Totals, 1990-1999



Summary of Murder/Non-Negligent Manslaughter Incidents, 1999

Date and Location of Incident	Victims		Assailants		Weapon Used	Relationship of Victim to Assailant	Circumstances
	Age	Sex	Age	Sex			
01/30/99 Grand Forks	Infant	F	24	M	Shotgun	Daughter	Victim was shot by father who then shot and injured himself.
02/21/99 Bismarck	25	M	22	M	Handgun	Acquaintance	Victim was shot during a liquor store robbery.
03/20/99 Fargo	77	M	55	M	Blunt Object	Acquaintance	Victim was an attorney that had represented the assailant in the past. Victim's apartment was also set on fire.
05/16/99 Hamilton Pembina County	34 44	F F	40	M	Shotgun	Girlfriend Acquaintance	One of the victims had a restraining order regarding the assailant and was staying with a friend. The assailant killed both and later committed suicide.
06/06/99 Grand Forks	30	M	19	M	Knife	Step-Father	Victim was stabbed once in the back.
07/29/99 Cannon Ball Standing Rock Res.	52	M	37	F	Knife	Boyfriend	Victim was stabbed seven times.
08/21/99 Grand Forks	41	F	43	M	Shotgun	Wife	Murder-suicide. Wife had recently filed for divorce.
10/17/99 Minot	18 29	M M	29	M	Automobile	Relationship Unknown Friend	Assailant drove into a crowd of people after being asked to leave a party and getting into a fight.
11/19/99 Fargo	24	M	44	M	Knife	Friend	Victim was stabbed in the neck by a man he had been drinking with earlier.

Forcible Rape

The UCR program defines Forcible Rape as “the carnal knowledge of a female forcibly and against her will.” Assaults to rape, attempts to commit rape by force or threat of force are included. Carnal abuse, statutory offenses (no force -- victim under age of consent), and other sex offenses are not included.

In 1999, 147 forcible rapes were reported to local law enforcement in North Dakota. This is a decrease of 13 percent from the 1998 total of 169 offenses.

Because the UCR definition states that victims of rape must be female, the rate of occurrence for reported rapes is calculated based only on the female population. The Census Bureau’s 1999 population estimate for North Dakota is 634,000. The number of females is approximately half of that figure. The resulting rate for 1999 is 46.4 reported rapes per 100,000 females, compared with 53.0 rapes per 100,000 females in 1998.

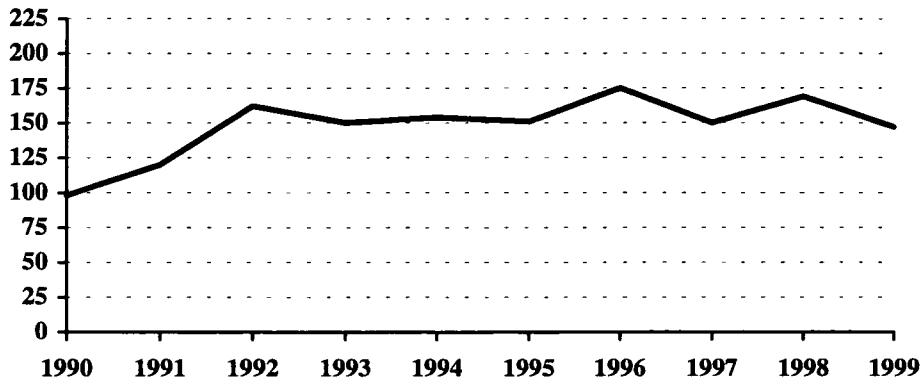
Approximately 67 percent of reported rapes were cleared by arrest or exceptional means in 1999.

Twenty-four arrests for forcible rape were reported in 1999. Seventy-five percent of those arrested were adults. In 1998, 44 arrests for rape were reported.

Forcible Rape Summary

Year	Population	Offense Total	% Change in Number from Previous Year	Rate per 100,000 Females	% Change in Rate from Previous Year	Percent Cleared
1990	638,800	98	25.6 %	30.7	30.1 %	59.2 %
1991	635,000	120	22.4	37.8	23.1	42.5
1992	636,000	162	35.0	50.9	34.7	44.4
1993	635,000	150	-7.4	47.2	-7.3	56.0
1994	638,000	154	2.7	48.3	2.3	47.4
1995	641,000	151	-1.9	47.1	-2.5	68.2
1996	644,000	175	15.9	54.3	15.3	76.6
1997	641,000	150	-14.3	46.8	-13.8	57.3
1998	638,000	169	12.7	53.0	13.2	51.5
1999	634,000	147	-13.0	46.4	-12.5	67.3

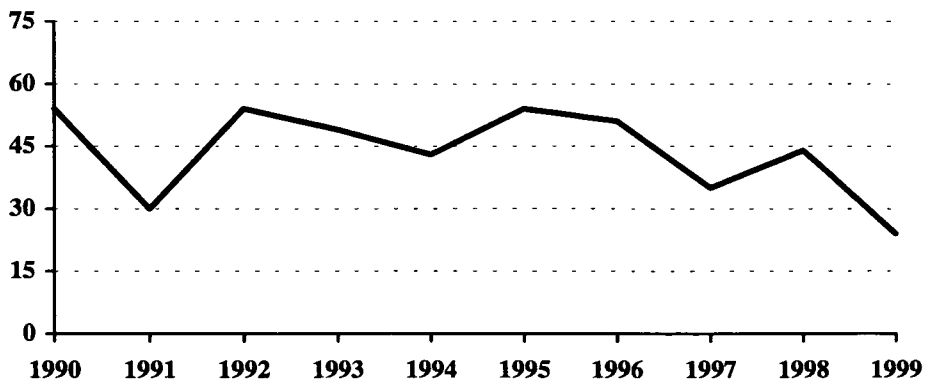
Forcible Rape Totals, 1990-1999



Arrests for Forcible Rape, 1990-1999

Year	Juvenile	Adult	Age Not Reported	Total
1990	8	46		54
1991	6	23	1	30
1992	13	40	1	54
1993	8	40	1	49
1994	13	29	1	43
1995	16	36	2	54
1996	12	39		51
1997	6	29		35
1998	13	31		44
1999	6	18		24

Arrests for Forcible Rape, 1990-1999



Robbery

Robbery is defined by the UCR program as “the taking or attempting to take anything of value from the care, custody, or control of a person or persons by force or threat of force or violence and/or by putting the victim in fear.”

Seventy robberies were reported in North Dakota in 1999, a decrease of 10.3 percent from the total of 78 reported in 1998. In 1997, 45 robberies were reported.

The 1999 robbery rate was 11.0 per 100,000 population, as compared with 12.2 per 100,000 population in 1998. This is a 9.8 percent decrease in the robbery rate.

Approximately 49 percent of reported robberies were cleared by arrest or exceptional means.

Twenty-eight arrests for robbery were reported in 1999. Of those, nine were arrests of juveniles.

Firearms were used in 23 percent of the reported robberies in 1999. Fifty-seven percent were strong-arm robberies where no weapon was used.

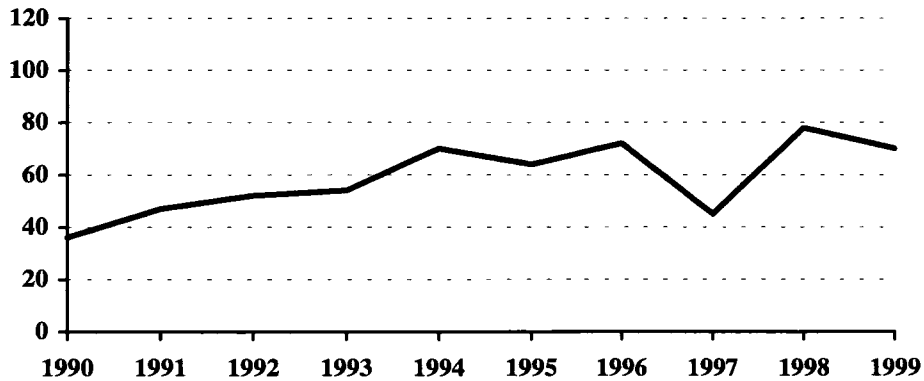
The value of property stolen in robbery incidents increased from \$19,393 in 1998 to \$23,808 in 1999.

The average robbery in 1999 involved \$340 worth of property.

Robbery Summary

Year	Population	Offense Total	% Change in Number from Previous Year	Rate per 100,000 Population	% Change in Rate from Previous Year	Percent Cleared
1990	638,800	36	-41.0 %	5.6	-39.1 %	44.4 %
1991	635,000	47	30.6	7.4	32.1	40.4
1992	636,000	52	10.6	8.2	10.8	53.8
1993	635,000	54	3.8	8.5	3.7	33.3
1994	638,000	70	29.6	11.0	29.4	44.3
1995	641,000	64	-8.6	10.0	-9.1	42.2
1996	644,000	72	12.5	11.2	12.0	48.6
1997	641,000	45	-37.5	7.0	-37.5	64.4
1998	638,000	78	73.3	12.2	74.3	41.0
1999	634,000	70	-10.3	11.0	-9.8	48.6

Robbery Totals, 1990-1999



Robbery by Type of Weapon Involved, 1999

Type of Weapon	Number Reported	Percent of Total Offenses
Firearm	16	22.9 %
Knife or Cutting Instrument	3	4.3
Other Dangerous Weapon	11	15.7
Hands, Fists, Feet, etc.	40	57.1
Robbery Total	70	100.0

Robbery by Place of Occurrence and Value of Property, 1999

Place of Occurrence	Number Reported	Value of Property	Average Value per Robbery
Highway	12	\$ 1,687	\$ 140.58
Commercial House	23	14,576	633.74
Gas or Service Station	1	542	542.00
Convenience Store	6	747	124.50
Residence	12	4,772	397.67
Bank	1	0	0.00
Other	15	1,484	98.93
Robbery Total	70	23,808	340.11

Arrests for Robbery, 1990-1999

Year	Juvenile	Adult	Age Not Reported	Total
1990	8	14		22
1991	1	16	1	18
1992	8	21		29
1993	14	8		22
1994	8	23		31
1995	13	18		31
1996	10	28		38
1997	13	17		30
1998	8	20		28
1999	9	19		28

Property Loss Due to Robbery, 1990-1999

Year	Offense Total	Property Loss	Average Loss per Robbery
1990	36	\$ 12,893	\$ 358.14
1991	47	22,989	489.13
1992	52	31,341	602.71
1993	54	37,608	696.44
1994	70	14,030	200.43
1995	64	20,515	320.55
1996	72	11,734	162.97
1997	45	7,029	156.20
1998	78	19,393	248.63
1999	70	23,808	340.11

Aggravated Assault

The UCR program defines Aggravated Assault as “an unlawful attack by one person upon another for the purpose of inflicting severe or aggravated bodily injury. This type of assault is usually accompanied by the use of a weapon or by means likely to produce death or great bodily harm. Attempts are included because it is not necessary that an injury result when a gun, knife, or other weapon is used which could and probably would result in serious personal injury if the crime were successfully completed.”

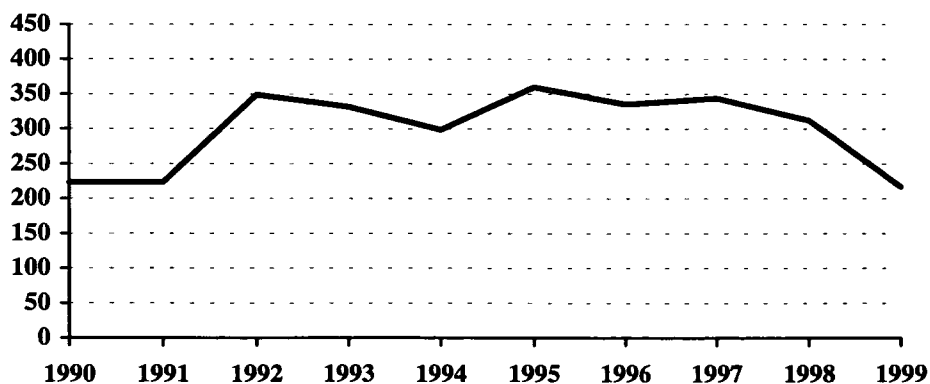
In 1999, 217 aggravated assaults were reported in North Dakota, a decrease of 30.4 percent from the 312 aggravated assaults reported in 1998.

The aggravated assault rate for North Dakota declined 30.1 percent from 48.9 per 100,000 population in 1998 to 34.2 per 100,000 population in 1999.

Aggravated Assault Summary

Year	Population	Offense Total	% Change in Number from Previous Year	Rate per 100,000 Population	% Change in Rate from Previous Year	Percent Cleared
1990	638,800	223	-16.2 %	34.9	-13.4 %	65.5 %
1991	635,000	223	0.0	35.1	0.6	65.5
1992	636,000	349	56.5	54.9	56.4	64.8
1993	635,000	332	-4.9	52.3	-4.7	70.2
1994	638,000	299	-9.9	46.9	-10.3	62.2
1995	641,000	360	20.4	56.2	19.8	71.1
1996	644,000	335	-6.9	52.0	-7.5	75.8
1997	641,000	344	2.7	53.7	3.3	70.3
1998	638,000	312	-9.3	48.9	-8.9	71.8
1999	634,000	217	-30.4	34.2	-30.1	71.0

Aggravated Assault Totals, 1990-1999



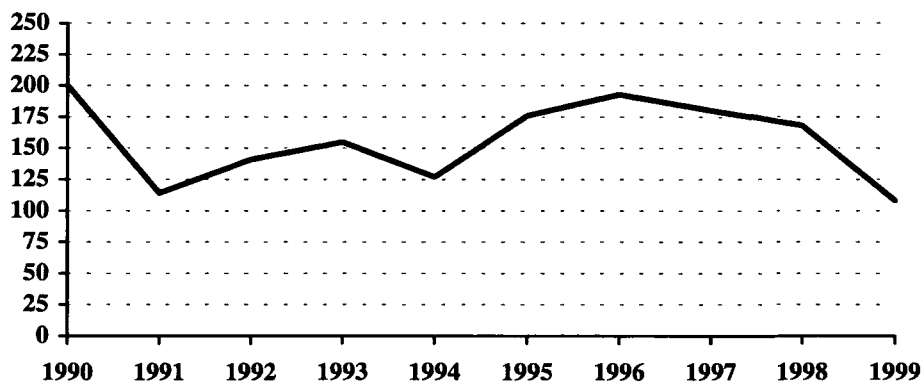
Aggravated Assault by Type of Weapon Involved, 1999

Type of Weapon	Number Reported	Percent of Total Offenses
Firearm	9	4.2 %
Knife or Cutting Instrument	45	20.7
Other Dangerous Weapon	67	30.9
Hands, Fists, Feet, etc.	96	44.2
Aggravated Assault Total	217	100.0

Arrests for Aggravated Assault, 1990-1999

Year	Juvenile	Adult	Age Not Reported	Total
1990	28	172		200
1991	34	77	3	114
1992	30	110	1	141
1993	47	107	1	155
1994	37	89	1	127
1995	68	108		176
1996	45	147	1	193
1997	35	144	1	180
1998	47	121		168
1999	25	82	1	108

Arrests for Aggravated Assault, 1990-1999



Property Crime

Property crime includes the offenses of burglary, larceny/theft, and motor vehicle theft.

In 1999, the total number of property crimes reported was 14,145. This is a decrease of 11.4 percent from the 1998 total of 15,971.

Property crime accounted for 96.9 percent of the index offenses reported in North Dakota.

The property crime rate declined 10.9 percent from 2503.3 per 100,000 population in 1998 to 2231.1 per 100,000 in 1999.

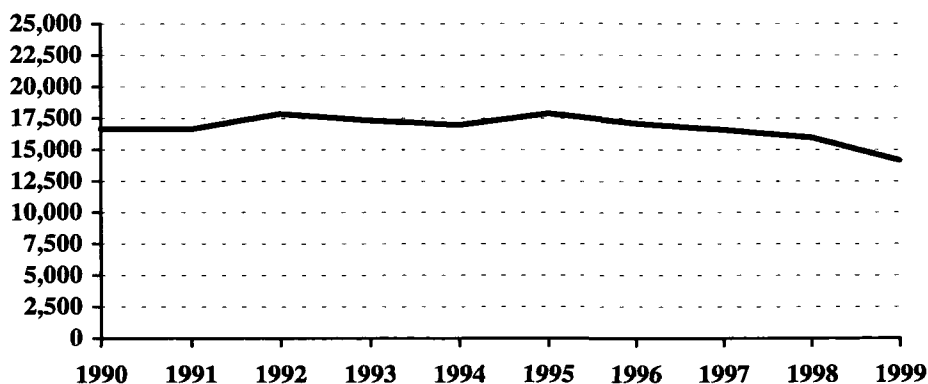
Approximately 26 percent of property crimes were cleared by arrest or exceptional means in 1999.

A total of 3,025 arrests was reported for property crimes. Of those, 53 percent were arrests of juveniles.

Property Crime Summary

Year	Population	Property Index Offenses	% Change in Number from Previous Year	Rate per 100,000 Population	% Change in Rate from Previous Year	Percent Cleared
1990	638,800	16,656	2.2 %	2607.4	5.6 %	28.7 %
1991	635,000	16,620	-0.2	2617.3	0.4	25.5
1992	636,000	17,853	7.4	2807.1	7.3	24.8
1993	635,000	17,317	-3.0	2727.1	-2.8	25.5
1994	638,000	16,959	-2.1	2658.2	-2.5	24.7
1995	641,000	17,874	5.4	2788.5	4.9	26.8
1996	644,000	17,088	-4.4	2653.4	-4.8	28.4
1997	641,000	16,573	-3.0	2585.5	-2.6	27.7
1998	638,000	15,971	-3.6	2503.3	-3.2	25.2
1999	634,000	14,145	-11.4	2231.1	-10.9	25.9

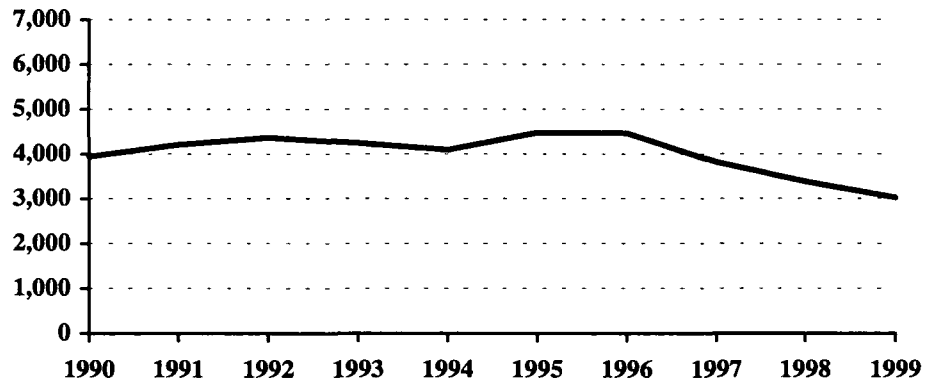
Property Crime Totals, 1990-1999



Arrests for Property Crimes, 1990-1999

Year	Juvenile	Adult	Age Not Reported	Total
1990	1,933	2,004		3,937
1991	2,291	1,886	28	4,205
1992	2,455	1,885	25	4,365
1993	2,322	1,889	31	4,242
1994	2,266	1,782	41	4,089
1995	2,536	1,919	19	4,474
1996	2,455	1,997	10	4,462
1997	2,198	1,590	25	3,813
1998	1,735	1,636	12	3,383
1999	1,599	1,419	7	3,025

Arrests for Property Crimes, 1990-1999



Burglary

The UCR program defines Burglary as the “unlawful entry of a structure to commit a felony or theft. The use of force to gain entry is not required to classify an offense as burglary.”

Burglaries are classified into three categories: forcible entry, unlawful entry where no force is used, and attempted forcible entry.

In 1999, 2,200 burglaries were reported to the UCR program. This represents a slight increase of 0.3 percent from the total of 2,194 burglaries reported in 1998.

The rate of burglaries based on population was 347.0 per 100,000 inhabitants for 1999. This is a 0.9 percent increase from the rate of 343.9 per 100,000 population in 1998.

Approximately 21 percent of burglaries were cleared by arrest or exceptional means in 1999.

A total of 409 arrests for burglary was reported in 1999. Of these, 49 percent were juveniles.

The UCR program classifies burglaries by time of day and location of the incident. Approximately 49 percent were burglaries of residences. Fifty-three percent of burglaries were known to have been committed at night.

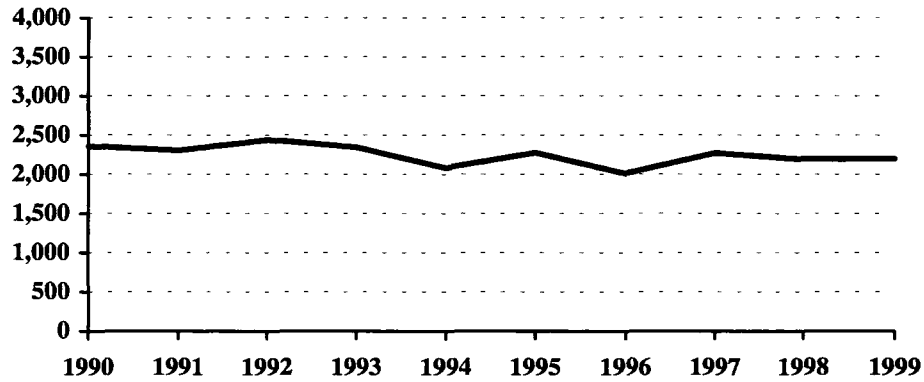
About 58 percent of burglaries involved forcible entry.

Property loss due to burglary is substantial. Over 1.8 million dollars worth of property was reported stolen in burglary incidents in 1999. The average burglary involved \$843 worth of property.

Burglary Summary

Year	Population	Offense Total	% Change in Number from Previous Year	Rate per 100,000 Population	% Change in Rate from Previous Year	Percent Cleared
1990	638,800	2,357	0.7 %	369.0	4.0 %	22.4 %
1991	635,000	2,305	-2.2	363.0	-1.6	17.6
1992	636,000	2,440	5.9	383.6	5.7	17.6
1993	635,000	2,346	-3.9	369.4	-3.7	19.8
1994	638,000	2,080	-11.3	326.0	-11.7	17.7
1995	641,000	2,275	9.4	354.9	8.9	18.7
1996	644,000	2,008	-11.7	311.8	-12.1	20.7
1997	641,000	2,271	13.1	354.3	13.6	19.8
1998	638,000	2,194	-3.4	343.9	-2.9	19.5
1999	634,000	2,200	0.3	347.0	0.9	20.8

Burglary Totals, 1990-1999



Burglary by Type of Entry, 1999

Type of Entry	Number Reported	Percent of Total Offenses
Forcible Entry	1,268	57.6 %
Unlawful Entry - No Force	739	33.6
Attempted Forcible Entry	193	8.8
Burglary Total	2,200	100.0

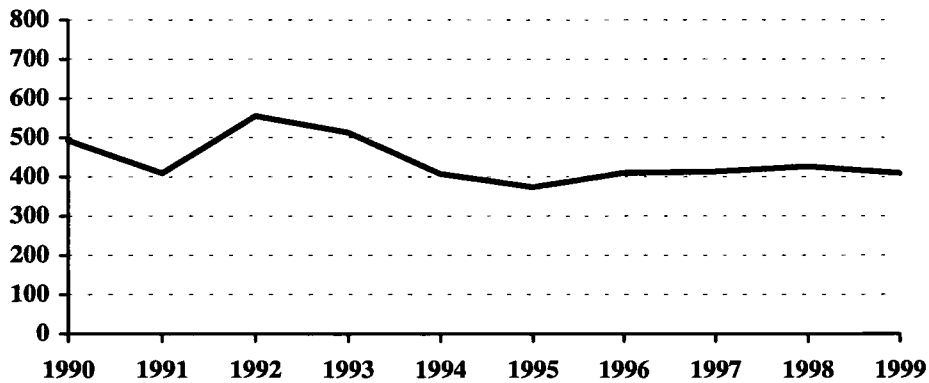
Burglary by Location and Value of Property, 1999

Location/Time	Number Reported	Value of Property	Average Value per Burglary
Residence - Night	488	\$ 303,414	\$ 621.75
Residence - Day	485	480,639	991.01
Residence - Unknown	111	59,365	534.82
Residence Subtotal	1,084	843,418	778.06
Non-Residence - Night	678	737,052	1087.10
Non-Residence - Day	373	235,197	630.55
Non-Residence - Unknown	65	38,096	586.09
Non-Residence Subtotal	1,116	1,010,345	905.33
Burglary Total	2,200	1,853,763	842.62

Arrests for Burglary, 1990-1999

Year	Juvenile	Adult	Age Not Reported	Total
1990	171	322		493
1991	166	240	3	409
1992	272	280	3	555
1993	226	283	4	513
1994	197	204	6	407
1995	208	164	2	374
1996	201	208	1	410
1997	222	185	6	413
1998	201	220	5	426
1999	202	205	2	409

Arrests for Burglary, 1990-1999



Property Loss Due to Burglary, 1990-1999

Year	Offense Total	Property Loss	Average Loss per Burglary
1990	2,357	\$ 2,204,614	\$ 935.35
1991	2,305	1,545,064	670.31
1992	2,440	2,101,987	861.47
1993	2,346	1,571,149	669.71
1994	2,080	1,696,717	815.73
1995	2,275	1,939,595	852.57
1996	2,008	1,404,087	699.25
1997	2,271	2,114,489	931.08
1998	2,194	1,630,902	743.35
1999	2,200	1,853,763	842.62

Larceny/Theft

The UCR program defines Larceny/Theft as the “unlawful taking, carrying, leading, or riding away of property from the possession or constructive possession of another. It includes crimes such as shoplifting, pocket-picking, purse-snatching, thefts from motor vehicles, thefts of motor vehicle parts and accessories, bicycle thefts, etc., in which no use of force, violence or fraud occurs. In the Uniform Crime Reporting program, this crime category does not include embezzlement, confidence games, forgery, and worthless checks. Motor vehicle theft is also excluded from this category inasmuch as it is a separate crime index offense.”

A total of 10,956 larceny/theft offenses was reported in North Dakota in 1999. This is a 13.8 percent decrease from the 1998 total of 12,704.

The larceny/theft rate per 100,000 population was 1728.1 compared with 1991.2 in 1998, a 13.2 percent reduction in the rate.

Twenty-six percent of larceny/theft offenses were cleared by arrest or exceptional means in 1999.

The number of arrests for this offense decreased from 2,671 in 1998 to 2,327 in 1999. Fifty-two percent of those arrested for larceny/theft in 1999 were juveniles.

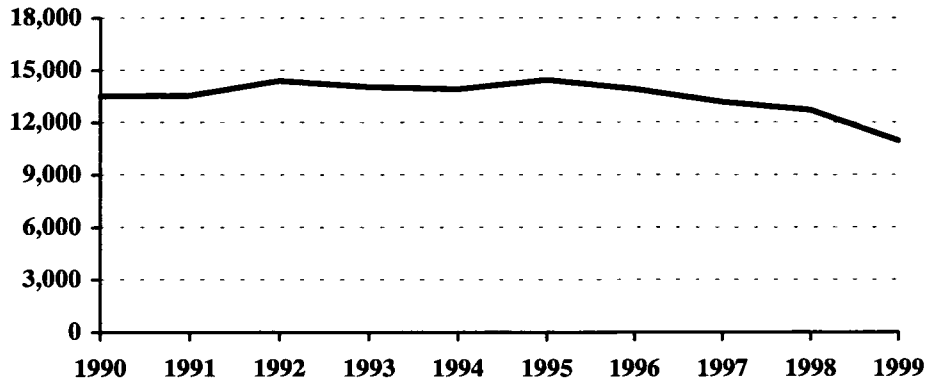
Over 5.6 million dollars worth of property was reported stolen as the result of larceny/theft offenses in the state. The average dollar value per offense increased from \$461 in 1998 to \$519 in 1999.

Larceny/theft accounted for 75.1 percent of the total index offenses reported and amounted to approximately 51 percent of the total value of stolen property.

Larceny/Theft Summary

Year	Population	Offense Total	% Change in Number from Previous Year	Rate per 100,000 Population	% Change in Rate from Previous Year	Percent Cleared
1990	638,800	13,505	2.2 %	2114.1	5.6 %	28.8 %
1991	635,000	13,543	0.3	2132.8	0.9	25.9
1992	636,000	14,390	6.3	2262.6	6.1	25.0
1993	635,000	14,031	-2.5	2209.6	-2.3	25.6
1994	638,000	13,898	-0.9	2178.4	-1.4	25.0
1995	641,000	14,435	3.9	2252.0	3.4	27.2
1996	644,000	13,898	-3.7	2158.1	-4.2	28.6
1997	641,000	13,163	-5.3	2053.5	-4.8	28.3
1998	638,000	12,704	-3.5	1991.2	-3.0	25.4
1999	634,000	10,956	-13.8	1728.1	-13.2	25.9

Larceny/Theft Totals, 1990-1999



Monetary Value of Larceny/Theft, 1999

Value of Larceny/Theft	Number Reported	Percent of Total Offenses
Under \$50	3,578	32.6 %
\$50 to \$200	2,726	24.9
Over \$200	4,652	42.5
Larceny/Theft Total	10,956	100.0

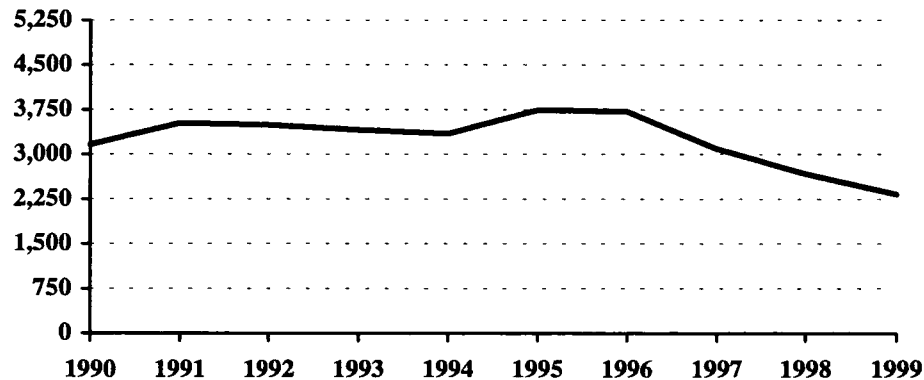
Larceny/Theft by Type and Value, 1999

Type of Larceny/Theft	Number Reported	Value of Property	Average Value per Larceny/Theft
From Motor Vehicle	2,763	\$ 1,494,789	\$ 541.00
From Building	1,647	1,193,027	724.36
Shoplifting	1,464	114,296	78.07
Bicycles	923	201,081	217.86
Motor Vehicle Parts, Accessories	434	161,158	371.33
From Coin-Operated Machine	71	16,557	233.20
Pocket Picking	25	4,327	173.08
Purse Snatching	13	1,834	141.08
All Other	3,616	2,503,011	692.20
Larceny/Theft Total	10,956	5,690,080	519.36

Arrests for Larceny/Theft, 1990-1999

Year	Juvenile	Adult	Age Not Reported	Total
1990	1,602	1,560		3,162
1991	1,947	1,555	22	3,524
1992	1,972	1,505	15	3,492
1993	1,900	1,485	24	3,409
1994	1,846	1,472	28	3,346
1995	2,066	1,662	14	3,742
1996	2,056	1,656	6	3,718
1997	1,771	1,306	16	3,093
1998	1,372	1,292	7	2,671
1999	1,212	1,110	5	2,327

Arrests for Larceny/Theft, 1990-1999



Property Loss Due to Larceny/Theft, 1990-1999

Year	Offense Total	Property Loss	Average Loss per Larceny/Theft
1990	13,505	\$ 6,474,966	\$ 479.45
1991	13,543	4,713,264	348.02
1992	14,390	6,283,654	436.67
1993	14,031	4,819,935	343.52
1994	13,898	4,842,899	348.46
1995	14,435	5,394,911	373.74
1996	13,898	5,118,818	368.31
1997	13,163	5,680,026	431.51
1998	12,704	5,858,913	461.19
1999	10,956	5,690,080	519.36

Motor Vehicle Theft

Motor Vehicle Theft is defined by the UCR program as “the theft or attempted theft of a motor vehicle; the offense category includes the stealing of automobiles, trucks, buses, motorcycles, motorscooters, snowmobiles, etc. The definition excludes the taking of a motor vehicle for temporary use by those persons having lawful access.”

A total of 989 motor vehicle thefts was reported in 1999. This is a decrease of 7.8 percent from the 1998 total of 1,073.

Based on a Census Bureau population estimate of 634,000 for North Dakota, the resulting motor vehicle theft rate is 156.0 per 100,000 population.

Thirty-seven percent of reported motor vehicle thefts were cleared by arrest or exceptional means in 1999.

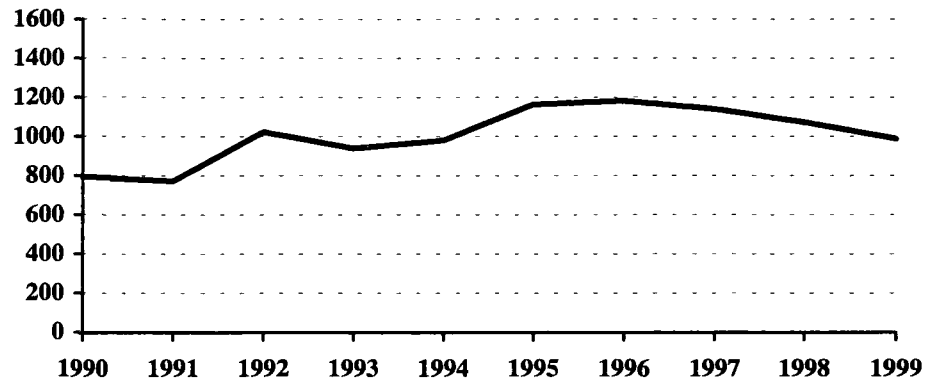
The number of arrests for motor vehicle theft increased slightly from 286 in 1998 to 289 in 1999.

The average value per motor vehicle theft was approximately \$3,674.

Motor Vehicle Theft Summary

Year	Population	Offense Total	% Change in Number from Previous Year	Rate per 100,000 Population	% Change in Rate from Previous Year	Percent Cleared
1990	638,800	794	8.2 %	124.3	11.8 %	45.8 %
1991	635,000	772	-2.8	121.6	-2.2	41.8
1992	636,000	1,023	32.5	160.8	32.2	39.4
1993	635,000	940	-8.1	148.0	-8.0	38.3
1994	638,000	981	4.4	153.8	3.9	34.8
1995	641,000	1,164	18.7	181.6	18.1	37.3
1996	644,000	1,182	1.5	183.5	1.0	40.1
1997	641,000	1,139	-3.6	177.7	-3.2	37.1
1998	638,000	1,073	-5.8	168.2	-5.3	35.3
1999	634,000	989	-7.8	156.0	-7.3	37.0

Motor Vehicle Theft Totals, 1990-1999



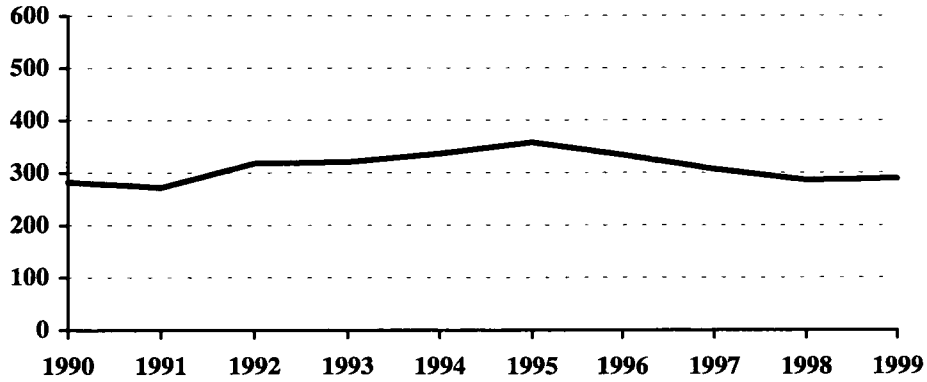
Type of Vehicle Stolen, 1999

Type of Vehicle	Number Reported	Percent of Total Offenses
Automobiles	814	82.3 %
Trucks and Buses	99	10.0
Other Vehicles	76	7.7
Motor Vehicle Theft Total	989	100.0

Arrests for Motor Vehicle Theft, 1990-1999

Year	Juvenile	Adult	Age Not Reported	Total
1990	160	122		282
1991	178	91	3	272
1992	211	100	7	318
1993	196	121	3	320
1994	223	106	7	336
1995	262	93	3	358
1996	198	133	3	334
1997	205	99	3	307
1998	162	124		286
1999	185	104		289

Arrests for Motor Vehicle Theft, 1990-1999



Property Loss Due to Motor Vehicle Theft, 1990-1999

Year	Offense Total	Property Loss	Average Loss per Offense
1990	794	\$ 2,401,562	\$ 3,024.64
1991	772	2,161,717	2,800.15
1992	1,023	2,799,939	2,736.99
1993	940	3,010,954	3,203.14
1994	981	3,142,478	3,203.34
1995	1,164	3,714,582	3,191.22
1996	1,182	4,488,026	3,796.98
1997	1,139	4,706,068	4,131.75
1998	1,073	3,909,583	3,643.60
1999	989	3,633,353	3,673.76

Crime Index Offenses by Reporting Jurisdiction

The rate per 100,000 population is shown immediately below the actual number of crime index offenses reported by each jurisdiction. A county total is also shown for each of those counties that have more than one reporting jurisdiction within its geographic boundaries. The rate is reported per 100,000 for easy comparison to national publications.

Number and Rate of Index Offenses, 1999

County	Reporting Jurisdiction	Population	Murder/ Non-Negligent Manslaughter	Forcible Rape	Robbery	Aggravated Assault	Burglary	Larceny/ Theft	Motor Vehicle Theft	Total Index Offenses
Adams	County SO	2,695				1 37.1	4 148.4	27 1001.9		32 1187.4
Barnes	County SO	5,059				1 19.8	10 197.7	10 197.7		21 415.1
	Valley City PD	6,813					12 176.1	75 1100.8	6 88.1	93 1365.0
	County Total	11,872				1 8.4	22 185.3	85 716.0	6 50.5	114 960.2
Benson	County SO	6,844	DID NOT REPORT IN 1999							
Billings	County SO	1,050	DID NOT REPORT IN 1999							
Bottineau	County SO	7,174					2 27.9	32 446.1	3 41.8	37 515.8
Bowman	County SO	1,701	DID NOT REPORT IN 1999							
	Bowman PD	1,592		1 62.8				7 439.7		8 502.5
Burke	County SO	2,250					4 177.8	5 222.2		9 400.0
Burleigh	County SO	12,735		4 31.4		7 55.0	47 369.1	41 321.9	3 23.6	102 800.9
	Bismarck PD	53,652	1 1.9	7 13.0	9 16.8	15 28.0	259 482.7	1567 2920.7	103 192.0	1961 3655.0
	County Total	66,387	1 1.5	11 16.6	9 13.6	22 33.1	306 460.9	1608 2422.2	106 159.7	2063 3107.5
Cass	County SO	15,908		4 25.1	1 6.3	2 12.6	59 370.9	174 1093.8	24 150.9	264 1659.5
	Fargo PD*	86,430	2 2.3	61 70.6	26 30.1	55 63.6	470 543.8	2342 2709.7	206 238.3	3162 3658.5
	West Fargo PD	13,990		1 7.1		3 21.4	49 350.3	221 1579.7	22 157.3	296 2115.8
	County Total	116,328	2 1.7	66 56.7	27 23.2	60 51.6	578 496.9	2737 2352.8	252 216.6	3722 3199.6
Cavalier	County SO	4,975					19 381.9	63 1266.3	5 100.5	87 1748.7
Dickey	County SO	3,941		4 101.5			8 203.0	42 1065.7	1 25.4	55 1395.6
	Oakes PD	1,663						2 120.3		2 120.3
	County Total	5,604		4 71.4			8 142.8	44 785.2	1 17.8	57 1017.1
Divide	County SO**	1,328					2 150.6			2 150.6
	Crosby PD	1,021	DID NOT REPORT IN 1999							
Dunn	County SO	3,534						1 28.3		1 28.3

* Includes 180 index offenses reported by the NDSU PD.

** Partial Year

County	Reporting Jurisdiction	Population	Murder/ Non-Negligent Manslaughter	Forcible Rape	Robbery	Aggravated Assault	Burglary	Larceny/ Theft	Motor Vehicle Theft	Total Index Offenses
Eddy	County SO	2,827					8 283.0	13 459.9	4 141.5	25 884.3
Emmons	County SO	3,059					13 425.0	20 653.8	2 65.4	35 1144.2
	Linton PD	1,221					4 327.6	4 327.6	1 81.9	9 737.1
	County Total	4,280					17 397.2	24 560.7	3 70.1	44 1028.0
Foster	County SO	1,679					4 238.2	3 178.7		7 416.9
	Carrington PD*	2,096								0 0.0
Golden Valley	County SO	1,863	DID NOT REPORT IN 1999							
Grand Forks	County SO	15,649		9 57.5	2 12.8	2 12.8	40 255.6	119 760.4	18 115.0	190 1214.1
	Emerado PD	460					1 217.4	4 869.6	1 217.4	6 1304.3
	Grand Forks PD**	46,988	3 6.4	11 23.4	13 27.7	40 85.1	310 659.7	1986 4226.6	197 419.3	2560 5448.2
	Larimore PD	1,303						1 76.7		1 76.7
	Northwood PD	1,067					3 281.2	10 937.2	3 281.2	16 1499.5
	Thompson PD	922					1 108.5	4 433.8		5 542.3
	County Total	66,389	3 4.5	20 30.1	15 22.6	42 63.3	355 534.7	2124 3199.3	219 329.9	2778 4184.4
Grant	County SO	1,993					3 150.5	9 451.6		12 602.1
	Carson PD	315						8 2539.7		8 2539.7
	Elgin PD	640						1 156.3		1 156.3
	County Total	2,948					3 101.8	18 610.6		21 712.3
Griggs	County SO	1,719					6 349.0	1 58.2		7 407.2
	Cooperstown PD	1,103	DID NOT REPORT IN 1999							
Hettinger	County SO	2,903					1 34.4			1 34.4
Kidder	County SO	2,221				1 45.0	6 270.1	9 405.2		16 720.4
	Steele PD	635						1 157.5		1 157.5
	County Total	2,856				1 35.0	6 210.1	10 350.1		17 595.2
LaMoure	County SO	4,725					1 21.2	3 63.5		4 84.7
Logan	County SO	1,572						13 827.0		13 827.0
	Napoleon PD	766	DID NOT REPORT IN 1999							
McHenry	County SO	6,032		2 33.2			21 348.1	42 696.3	7 116.0	72 1193.6
McIntosh	County SO	2,431					2 82.3	10 411.4	1 41.1	13 534.8
	Wishek PD	986	DID NOT REPORT IN 1999							
McKenzie	County SO	4,095					4 97.7	17 415.1		21 512.8
	Watford City PD	1,546					1 64.7	9 582.1	1 64.7	11 711.5
	County Total	5,641					5 88.6	26 460.9	1 17.7	32 567.3

* Partial Year

** Includes 186 index offenses reported by the UND PD.

County	Reporting Jurisdiction	Population	Murder/ Non-Negligent Manslaughter	Forcible Rape	Robbery	Aggravated Assault	Burglary	Larceny/ Theft	Motor Vehicle Theft	Total Index Offenses
McLean	County SO	9,634					35 363.3	121 1256.0	3 31.1	159 1650.4
Mercer	County SO	3,159					1 31.7	17 538.1	1 31.7	19 601.5
	Beulah PD	3,135		3 95.7			9 287.1	53 1690.6	1 31.9	66 2105.3
	Hazen PD	2,587				1 38.7	7 270.6	19 734.4	2 77.3	29 1121.0
	Stanton PD	469								0 0.0
	County Total	9,350		3 32.1		1 10.7	17 181.8	89 951.9	4 42.8	114 1219.3
Morton	County SO	8,653		2 23.1		6 69.3	12 138.7	86 993.9	3 34.7	109 1259.7
	Mandan PD	15,746		1 6.4	3 19.1	7 44.5	41 260.4	463 2940.4	45 285.8	560 3556.5
	County Total	24,399		3 12.3	3 12.3	13 53.3	53 217.2	549 2250.1	48 196.7	669 2741.9
Mountrail	County SO	5,664			1 17.7		9 158.9	49 865.1	7 123.6	66 1165.3
	Parshall PD	921					1 108.6			1 108.6
	County Total	6,585			1 15.2		10 151.9	49 744.1	7 106.3	67 1017.5
Nelson	County SO	3,689	DID NOT REPORT IN 1999							
Oliver	County SO	2,199					2 91.0	9 409.3		11 500.2
Pembina	County SO	7,016	2 28.5	2 28.5		1 14.3	13 185.3	32 456.1	5 71.3	55 783.9
	Cavalier PD	1,408		1 71.0			4 284.1	33 2343.8	3 213.1	41 2911.9
	County Total	8,424	2 23.7	3 35.6		1 11.9	17 201.8	65 771.6	8 95.0	96 1139.6
Pierce	County SO	1,891					2 105.8	10 528.8	2 105.8	14 740.3
	Rugby PD	2,699					7 259.4	28 1037.4	3 111.2	38 1407.9
	County Total	4,590					9 196.1	38 827.9	5 108.9	52 1132.9
Ramsey	County SO*	4,636				1 21.6	13 280.4	52 1121.7	12 258.8	78 1682.5
	Devils Lake PD	7,397		1 13.5	1 13.5	14 189.3	41 554.3	377 5096.7	34 459.6	468 6326.9
	County Total	12,033		1 8.3	1 8.3	15 124.7	54 448.8	429 3565.2	46 382.3	546 4537.5
Ransom	County SO	3,581				3 83.8	30 837.8	43 1200.8	4 111.7	80 2234.0
	Lisbon PD	2,154	DID NOT REPORT IN 1999							
Renville	County SO	2,788					6 215.2	12 430.4	1 35.9	19 681.5
Richland	County SO	8,886		3 33.8		3 33.8	42 472.7	71 799.0	5 56.3	124 1395.5
	Wahpeton PD	9,255		2 21.6		4 43.2	35 378.2	280 3025.4	22 237.7	343 3706.1
	County Total	18,141		5 27.6		7 38.6	77 424.5	351 1934.8	27 148.8	467 2574.3
Rolette	County SO	14,117				1 7.1	26 184.2	42 297.5	13 92.1	82 580.9
Sargent	County SO	4,425					20 452.0	49 1107.3	2 45.2	71 1604.5
Sheridan	County SO	1,682					11 654.0	12 713.4	1 59.5	24 1426.9
Sioux	County SO	4,162	DID NOT REPORT IN 1999							

* Ramsey SO reported for January through October 1999 only.

County	Reporting Jurisdiction	Population	Murder/ Non-Negligent Manslaughter	Forcible Rape	Robbery	Aggravated Assault	Burglary	Larceny/ Theft	Motor Vehicle Theft	Total Index Offenses	
Slope	County SO	859						1 116.4		1 116.4	
Stark	County SO	6,512		3 46.1		3 46.1	4 61.4	31 476.0	2 30.7	43 660.3	
	Dickinson PD	16,105		1 6.2	4 24.8	3 18.6	57 353.9	383 2378.1	28 173.9	476 2955.6	
	County Total	22,617		4 17.7	4 17.7	6 26.5	61 269.7	414 1830.5	30 132.6	519 2294.7	
Steele	County SO	2,247	DID NOT REPORT IN 1999								
Stutsman	County SO	6,207		1 16.1			28 451.1	33 531.7	7 112.8	69 1111.6	
	Jamestown PD	14,607		5 34.2	4 27.4	9 61.6	52 356.0	247 1691.0	19 130.1	336 2300.3	
	County Total	20,814		6 28.8	4 19.2	9 43.2	80 384.4	280 1345.2	26 124.9	405 1945.8	
Towner	County SO	1,711						1 58.4	1 58.4	2 116.9	
	Cando PD	1,285					4 311.3	9 700.4	2 155.6	15 1167.3	
	County Total	2,996					4 133.5	10 333.8	3 100.1	17 567.4	
Traill	County SO	3,655					6 164.2	15 410.4	7 191.5	28 766.1	
	Mayville PD	2,026				1 49.4	1 49.4	18 888.5	1 49.4	21 1036.5	
	Hatton PD	761					5 657.0	6 788.4	2 262.8	13 1708.3	
	Hillsboro PD	1,423	DID NOT REPORT IN 1999								
	Portland PD	618								0 0.0	
	Reporting Agency Totals	7,060					1 14.2	12 170.0	39 552.4	10 141.6	62 878.2
Walsh	County SO	8,355				3 35.9	31 371.0	65 778.0	4 47.9	103 1232.8	
	Grafton PD	5,080			1 19.7	7 137.8	25 492.1	155 3051.2	28 551.2	216 4252.0	
	County Total	13,435			1 7.4	10 74.4	56 416.8	220 1637.5	32 238.2	319 2374.4	
Ward	County SO	23,224		5 21.5			48 206.7	141 607.1	11 47.4	205 882.7	
	Minot PD	35,033		2 5.7	10 28.5	5 14.3	16 45.7	124 354.0	853 2434.8	74 211.2	1084 3094.2
	County Total	58,257		2 3.4	15 25.7	5 8.6	16 27.5	172 295.2	994 1706.2	85 145.9	1289 2212.6
Wells	County SO	2,633					17 645.7	10 379.8	1 38.0	28 1063.4	
	Harvey PD	1,973					14 709.6	3 152.1		17 861.6	
	Fessenden PD	557	DID NOT REPORT IN 1999								
	Reporting Agency Totals	4,606					31 673.0	13 282.2	1 21.7	45 977.0	
Williams	County SO	7,648				4 52.3	27 353.0	45 588.4	7 91.5	83 1085.3	
	Williston PD	12,357		3 24.3		3 24.3	16 129.5	186 1505.2	18 145.7	226 1828.9	
	County Total	20,005		3 15.0		7 35.0	43 214.9	231 1154.7	25 125.0	309 1544.6	

ARREST ANALYSIS

(This page intentionally left blank.)

Arrests in 1999

Although primarily an indication of law enforcement activity, the number of arrests reported does provide a limited profile of the perpetrators of crime, especially for those crimes which have high clearance rates. Differing arrest practices, policies and enforcement emphases among agencies influence the volume of arrests for various offenses, particularly those against public order such as vagrancy, disorderly conduct, and related violations. However, arrests for serious crimes, e.g., robbery or burglary, are more likely to be consistent and uniform throughout all jurisdictions across the state.

The UCR program requires that an arrest be counted for each separate occasion an individual is taken into custody. Although several charges may be lodged against a person at the time of the arrest, one arrest is counted for each separate time the person is taken into custody.

North Dakota law enforcement agencies reported 30,258 arrests in 1999. A total of 33,548 arrests were reported in 1998.

In 1999, approximately 28 percent of total arrests were arrests of juveniles.

Seventy-two percent of total arrests were males.

Juveniles were arrested most often for liquor law violations.

Adults were arrested most often for the offense of DUI.

Approximately 11 percent of the reported arrests were arrests for crime index offenses. Fifty-one percent of the arrests for crime index offenses were arrests of juveniles. In 1998, 50 percent of arrests for crime index offenses were arrests of juveniles.

The total of 11,556 reported arrests for DUI and liquor law violations represents approximately 38 percent of the total arrests reported in the state of North Dakota in 1999. Arrests for DUI declined slightly from 5,187 in 1998 to 5,179 in 1999. Liquor law violation arrests increased 2.3 percent from 6,231 in 1998 to 6,377 reported in 1999.

Approximately 86 percent of total arrests were white; about 12 percent were Native American.

These statistics are provided by local law enforcement agencies that contribute to the North Dakota UCR program. No arrest figures for reservations in the state are included in these totals. Tribal law enforcement agencies do not participate in the state UCR program.

Total Arrests Reported, 1999

Offense Classification	Number Reported	Percent of Total Arrests
Murder/Non-Negligent Manslaughter	6	*
Negligent Manslaughter	4	*
Forcible Rape	24	0.1 %
Robbery	28	0.1
Aggravated Assault	108	0.4
Burglary	409	1.4
Larceny/Theft	2,327	7.7
Motor Vehicle Theft	289	1.0
Other Assaults	1,651	5.5
Arson	16	0.1
Forgery and Counterfeiting	160	0.5
Fraud	3,274	10.8
Embezzlement	6	*
Stolen Property Offenses	84	0.3
Vandalism	709	2.3
Weapons Offenses	107	0.4
Prostitution	3	*
Other Sex Offenses	76	0.3
Drug Abuse Violations	1,456	4.8
Gambling	5	*
Offenses Against Family and Children	200	0.7
Driving Under the Influence	5,179	17.1
Liquor Law Violations	6,377	21.1
Disorderly Conduct	1,568	5.2
Vagrancy	8	*
All Other Offenses	4,998	16.5
Suspicion	1	*
Curfew and Loitering	382	1.3
Runaways	803	2.7
Arrest Total	30,258	100.0

* Less than 0.1 percent of total arrests.

Comparison of Reported Arrests, 1998-1999

Offense Classification	1998	1999	Percent Change
Murder/Non-Negligent Manslaughter	5	6	20.0 %
Negligent Manslaughter	2	4	100.0
Forcible Rape	44	24	-45.5
Robbery	28	28	0.0
Aggravated Assault	168	108	-35.7
Burglary	426	409	-4.0
Larceny/Theft	2,671	2,327	-12.9
Motor Vehicle Theft	286	289	1.0
Other Assaults	1,567	1,651	5.4
Arson	33	16	-51.5
Forgery and Counterfeiting	191	160	-16.2
Fraud	4,291	3,274	-23.7
Embezzlement	6	6	0.0
Stolen Property Offenses	150	84	-44.0
Vandalism	774	709	-8.4
Weapons Offenses	102	107	4.9
Prostitution	7	3	-57.1
Other Sex Offenses	82	76	-7.3
Drug Abuse Violations	1,517	1,456	-4.0
Gambling	6	5	-16.7
Offenses Against Family and Children	401	200	-50.1
Driving Under the Influence	5,187	5,179	-0.2
Liquor Law Violations	6,231	6,377	2.3
Disorderly Conduct	1,783	1,568	-12.1
Vagrancy	2	8	300.0
All Other Offenses	6,392	4,998	-21.8
Suspicion	0	1	----
Curfew and Loitering	347	382	10.1
Runaways	849	803	-5.4
Arrest Total	33,548	30,258	-9.8

Juvenile and Adult Arrests, 1999

Offense Classification	Juvenile	Adult	Age Not Reported	Total
Murder/Non-Negligent Manslaughter	1	5		6
Negligent Manslaughter	1	3		4
Forcible Rape	6	18		24
Robbery	9	19		28
Aggravated Assault	25	82	1	108
Burglary	202	205	2	409
Larceny/Theft	1,212	1,110	5	2,327
Motor Vehicle Theft	185	104		289
Other Assaults	401	1,244	6	1,651
Arson	10	6		16
Forgery and Counterfeiting	37	123		160
Fraud	17	3,243	14	3,274
Embezzlement		6		6
Stolen Property Offenses	49	35		84
Vandalism	420	287	2	709
Weapons Offenses	27	80		107
Prostitution		3		3
Other Sex Offenses	18	58		76
Drug Abuse Violations	284	1,169	3	1,456
Gambling		5		5
Offenses Against Family and Children	98	100	2	200
Driving Under the Influence	169	5,005	5	5,179
Liquor Law Violations	2,176	4,191	10	6,377
Disorderly Conduct	709	856	3	1,568
Vagrancy	1	7		8
All Other Offenses	1,187	3,804	7	4,998
Suspicion		1		1
Curfew and Loitering	382			382
Runaways	803			803
Arrest Total	8,429	21,769	60	30,258

Arrests by Gender, 1999

Offense Classification	Male	Female	Total
Murder/Non-Negligent Manslaughter	6		6
Negligent Manslaughter	4		4
Forcible Rape	24		24
Robbery	27	1	28
Aggravated Assault	90	18	108
Burglary	368	41	409
Larceny/Theft	1,522	805	2,327
Motor Vehicle Theft	233	56	289
Other Assaults	1,254	397	1,651
Arson	12	4	16
Forgery and Counterfeiting	78	82	160
Fraud	1,954	1,320	3,274
Embezzlement	3	3	6
Stolen Property Offenses	62	22	84
Vandalism	608	101	709
Weapons Offenses	105	2	107
Prostitution	2	1	3
Other Sex Offenses	75	1	76
Drug Abuse Violations	1,161	295	1,456
Gambling	2	3	5
Offenses Against Family and Children	147	53	200
Driving Under the Influence	4,149	1,030	5,179
Liquor Law Violations	4,337	2,040	6,377
Disorderly Conduct	1,165	403	1,568
Vagrancy	6	2	8
All Other Offenses	3,828	1,170	4,998
Suspicion	1		1
Curfew and Loitering	227	155	382
Runaways	352	451	803
Arrest Total	21,802	8,456	30,258

Arrests by Race, 1999

Offense Classification	White	Black	Native American	Asian	Total
Murder/Non-Negligent Manslaughter	5		1		6
Negligent Manslaughter	2	2			4
Forcible Rape	21	1	2		24
Robbery	18	1	8	1	28
Aggravated Assault	72	8	25	3	108
Burglary	325	7	77		409
Larceny/Theft	1,853	56	402	16	2,327
Motor Vehicle Theft	237	5	44	3	289
Other Assaults	1,254	78	311	8	1,651
Arson	15		1		16
Forgery and Counterfeiting	144	5	9	2	160
Fraud	3,101	40	124	9	3,274
Embezzlement	6				6
Stolen Property Offenses	62	1	21		84
Vandalism	606	8	95		709
Weapons Offenses	96	3	8		107
Prostitution	2	1			3
Other Sex Offenses	61	2	9	4	76
Drug Abuse Violations	1,303	36	115	2	1,456
Gambling	5				5
Offenses Against Family and Children	169	10	20	1	200
Driving Under the Influence	4,553	49	565	12	5,179
Liquor Law Violations	5,757	54	555	11	6,377
Disorderly Conduct	1,206	43	312	7	1,568
Vagrancy	6		2		8
All Other Offenses	4,282	93	610	13	4,998
Suspicion	1				1
Curfew and Loitering	291	3	87	1	382
Runaways	657	20	119	7	803
Arrest Total	26,110	526	3,522	100	30,258

Arrest Analysis by Reporting Jurisdiction

The table below contains arrest totals for each reporting agency in 1999. Juvenile and adult arrests as well as arrests reported without age information are included.

Arrests by Reporting Jurisdiction, 1999

Agency	Murder/Non-Neg. Mansl.	Negligent Manslaughter	Forcible Rape	Robbery	Aggravated Assault	Burglary	Larceny/Theft	Motor Vehicle Theft	Other Assault	Arson	Forgery/Counterfeiting	Fraud	Embezzlement	Stolen Property Offenses	Vandalism	Weapons Offenses	Prostitution	Other Sex Offenses	Drug Abuse Violations	Gambling Violations	Off. Against Fam & Children	DUI	Liquor Law Violations	Disorderly Conduct	Vagrancy	All Other Offenses	Suspicion	Carfew/Lottery	Runaway	Total
Adams SO					1		9		1						3							7	26	2		3				52
Barnes SO							2		1							2							4	12			1		1	23
Valley City PD						5	27	1	12						1	14	2		4	6			49	86	6		47	6	8	274
Benson SO	Did not report in 1999																													
Billings SO	Did not report in 1999																													
Botineau SO							4	1	3																	1			9	
Bowman SO	Did not report in 1999																													
Bowman PD																			5				9	55			23			92
Burke SO						5			5							2			11				3	3			12		1	42
Burleigh SO			2		5	7	1	2	24			604							4	52		2	68	152			1		24	948
Bismarck PD	1	1		10	41	461	21	228	3	23	23	1	14	127	15	2	13	106			5	457	481	175		259	89	132	2688	
Cass SO						2	1	9	21			799		2	3				34			5	105	237	15		21		2	1256
Fargo PD	2	11	17	21	113	448	78	271	8	27	30	1	11	66	11			3	227	1	109	866	89	140		306		2	35	2893
West Fargo PD					3	4	38	4	54		7	2		4	9	4		1	62		15	177	136	43		97	20	27	707	
NDSU PD						1													1			14	4			2			22	
Cavalier SO						8	1	2			1												1							13
Dickey SO						2	9		2			35										1	26	5		6			4	90
Oakes PD																														0
Divide SO*								1				2																		3
Crosby PD	Did not report in 1999																													
Dunn SO																							13							13
Eddy SO							7	2	3			57			2								6	3			2			82
Emmons SO							7		2		1	19			3					2			2	55			21			112
Linton PD						2	3																	5			1			11
Foster SO																														0
Carrington PD*																							2	2						4
Golden Valley SO	Did not report in 1999																													
Grand Forks SO				1		1	60	3	23		1	137			7	2			7		22	23	61	10		855		21	1234	
Emerado PD									2																					2
Grand Forks PD	2	1	3	1	9	23	311	37	161	1	16	6		13	51	18	1	6	153		15	476	567	301		301	37	158	2668	
Larimore PD*																			2			10	6	4		12			34	
Northwood PD									1									1												2
Thompson PD*																										1			1	2

* Partial Year

Agency	Murder/Non-Neg. Mansl.	Negligent Manslaughter	Forcible Rape	Robbery	Aggravated Assault	Burglary	Larceny/Theft	Motor Vehicle Theft	Other Assault	Arson	Forgery/Counterfeiting	Fraud	Embezzlement	Stolen Property Offenses	Vandalism	Weapons Offenses	Prostitution	Other Sex Offenses	Drug Abuse Violations	Gambling Violations	Off. Against Fam. & Children	DUI	Liquor Law Violations	Disorderly Conduct	Vagrancy	All Other Offenses	Suspicion	Curfew/Littering	Runaway	Total
UND PD					1		4	2	8							2			9		2	107	231	14		38				418
Grant SO							1		9						1			1					6			1				19
Carson PD									2						2				2				2			1				9
Elgin PD																														0
Griggs SO						8			1																					9
Cooperstown PD	Did not report in 1999																													
Hettinger SO																														0
Kidder SO									1			16											1	4			1			23
Steele PD																														0
LaMoure SO															1				1											2
Logan SO							1								1								3	4			2			11
Napoleon PD	Did not report in 1999																													
McHenry SO								1	5							4			1			32	31	1		19				94
McIntosh SO							1		2						5								1							9
Wishek PD	Did not report in 1999																													
McKenzie SO									3						3			1				8	12			1				28
Watford City PD												1					1						2	13	3		1			21
McLean SO					1		1													1			23	15	2		5			48
Mercer SO	1								2										2			17	28	1		1			52	
Beulah PD							5	1	3		1								5			27	16	4		12			74	
Hazen PD					1				2													2	13						18	
Stanton PD																				1				1					2	
Morton SO					6	1	9		2		1	3			14	3			21			53	135	14		145			407	
Mandan PD					3	5	81	17	98	1	9				72	7		2	66			496	140	46		354			1397	
Mountrail SO			1	2			5		3						22				3			5	4			6			51	
Parshall PD																										2			2	
Nelson SO	Did not report in 1999																													
Lakota PD	Did not report in 1999																													
Oliver SO							1		5										3			1		1					11	
Pembina SO						2	6	1	21		1				10	5		1	1			26	65	5		34	6	6	190	
Cavalier PD							4	6	4						6	1			2			27	53	10		28	6		147	
Pierce SO									1			4							1		1	6	11	3	1	9			37	
Rugby PD							2	1			1				4							4	12	3			3		30	
Ramsey SO*				1		4	3		1		2			1	4	1			1		1	16	21	5		38			99	
Devils Lake PD				1	17	54	129	12	86		6			20	51	2			40		1	96	394	253		93	82	6	1343	
Ransom SO						4	1		5			33			4			2	3			20	66	4		31			173	
Lisbon PD	Did not report in 1999																													
Renville SO						4			6			14			1				4			5				24			58	
Richland SO			1			11	8		9		1	190			22				2		1	34	128	9		4		6	426	
Wahpeton PD					2	3	32	13	24			2			8			3	19	2	1	39	185	15		20	9	14	391	
Rolette SO					1	4	12	6	19					6	5				1			3	24	7		11	4		103	
Sargent SO						5	3	1	7			37			6			3	15		1	68	72	3		38			259	
Sheridan SO							2		3						1				5			1	11	3		10			1	37
Sioux SO	Did not report in 1999																													

* Partial Year

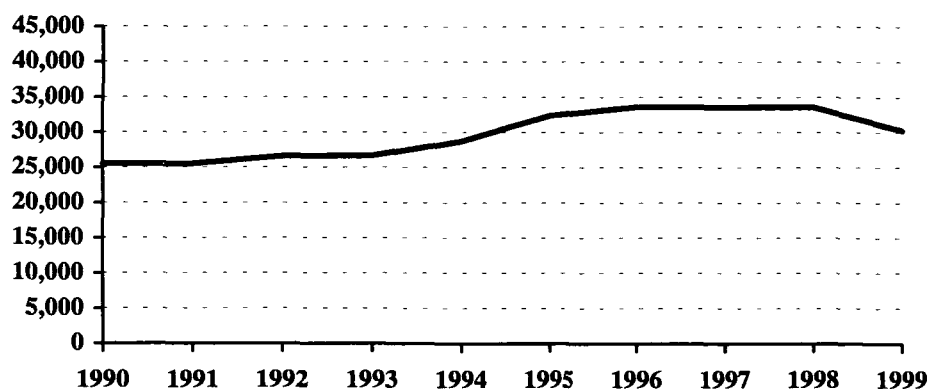
Agency	Murder/Non-Neg. Mansl.	Negligent Manslaughter	Forcible Rape	Robbery	Aggravated Assault	Burglary	Larceny/Theft	Motor Vehicle Theft	Other Assault	Arson	Forgery/Counterfeiting	Fraud	Embezzlement	Stolen Property Offenses	Vandalism	Weapons Offenses	Prostitution	Other Sex Offenses	Drug Abuse Violations	Gambling Violations	Off. Against Fam. & Children	DUI	Lower Law Violations	Disorderly Conduct	Vagrancy	All Other Offenses	Suspicion	Carjacking/Looting	Runaway	Total		
Slope SO																															0	
Stark SO							2	1	7			403				1			3				19	90			259				785	
Dickinson PD					2	13	74	10	68	1	6	19		6	33	3		5	17		7	101	306	116	1	109		7	140	1044		
Steele SO	Did not report in 1999																															
Stutsman SO						8	2	1	10			112			5				6				25	65	4		25			3	266	
Jamestown PD		1		4	2	8	124	14	104			19	6		41	5		4	9				113	264	44		450		18	40	1270	
Towner SO	Did not report in 1999																															
Cando PD							1														1	1	4	2		5					14	
Trails SO						1	4	1	4		2	99			2			2			1	29	6	2		6					159	
Mayville PD					1	3	9		6									1	1			25	44	4		2					96	
Hatton PD						2			3		1							2														9
Hillsboro PD	Did not report in 1999																															
Portland PD									1										1				5	14	1						22	
Walsh SO					2	6	5		2	1				1	9			2	2	1			15	10			10				66	
Grafton PD				1	3	5	26	11	14			13		2	20	2			9				18	38	4	1	16	1		1	185	
Ward SO						4	15	1	22			226			9				1				51	142	26	1	196		2	24	720	
Minot PD		2	2		10	17	269	24	153	1	13	7	1	4	39	1		2	47		5	143	356	221	4	469		66	127	1983		
Wells SO			1				2	2	5		1	35			1			1	1				4	37			27				117	
Harvey PD						3																										3
Fessenden PD	Did not report in 1999																															
Williams SO			1		4	14	5		16			353		1	9	3		2	3				28	160	4		190			2	795	
Williston PD		1		3	6	87	2	89			6		1		13	7		8	7	1	4		61	278	36		151		25	19	805	
Highway Patrol																				156			1100	872			49					2177
Drug Task Forces							2		1		1					3				318				9	1		133					468
Total	6	4	24	28	108	409	2327	289	1651	16	160	3274	6	84	709	107	3	76	1456	5	200	5179	6377	1568	8	4998	1	382	803	30258		

Arrests 1990-1999

Arrest Summary

Year	Population	Arrest Total	% Change from Previous Year	Rate per 100,000 Pop.
1990	638,800	25,508	3.3 %	3993.1
1991	635,000	25,532	0.1	4020.8
1992	636,000	26,571	4.1	4177.8
1993	635,000	26,670	0.4	4200.0
1994	638,000	28,737	7.8	4504.2
1995	641,000	32,399	12.7	5054.4
1996	644,000	33,614	3.8	5219.6
1997	641,000	33,634	0.1	5247.1
1998	638,000	33,548	-0.3	5258.3
1999	634,000	30,258	-9.8	4772.6

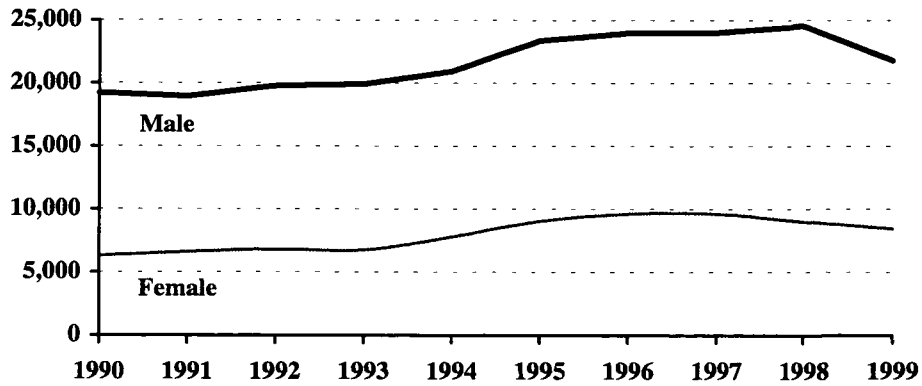
Arrest Totals, 1990-1999



Arrests by Gender, 1990-1999

Year	Male	% of Total	Female	% of Total	Total
1990	19,219	75.3 %	6,289	24.7 %	25,508
1991	18,919	74.1	6,613	25.9	25,532
1992	19,768	74.4	6,803	25.6	26,571
1993	19,913	74.7	6,757	25.3	26,670
1994	20,931	72.8	7,806	27.2	28,737
1995	23,363	72.1	9,036	27.9	32,399
1996	23,992	71.4	9,622	28.6	33,614
1997	24,011	71.4	9,623	28.6	33,634
1998	24,538	73.1	9,010	26.9	33,548
1999	21,802	72.1	8,456	27.9	30,258

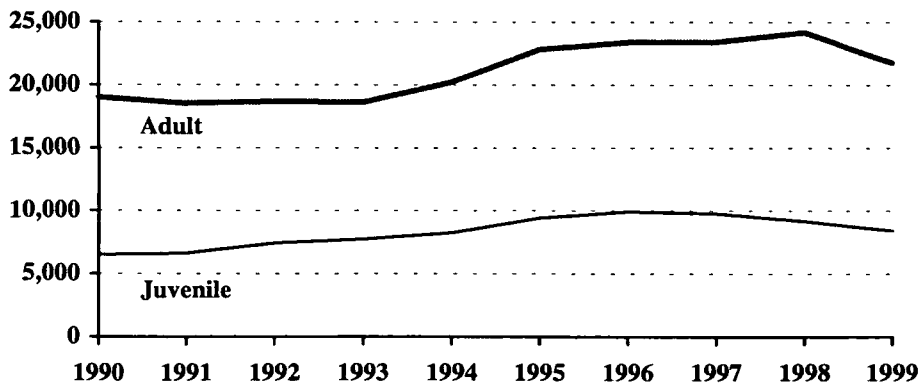
Arrests by Gender, 1990-1999



Juvenile and Adult Arrests, 1990-1999

Year	Juvenile	Percent of Total	Adult	Percent of Total	Age Not Reported	Percent of Total	Total
1990	6,500	25.5 %	19,008	74.5 %			25,508
1991	6,625	26.0	18,514	72.5	393	1.5 %	25,532
1992	7,441	28.0	18,685	70.3	445	1.7	26,571
1993	7,743	29.0	18,617	69.8	310	1.2	26,670
1994	8,246	28.7	20,227	70.4	264	0.9	28,737
1995	9,432	29.1	22,820	70.4	147	0.5	32,399
1996	9,938	29.6	23,409	69.6	267	0.8	33,614
1997	9,780	29.1	23,428	69.6	426	1.3	33,634
1998	9,175	27.3	24,188	72.1	185	0.6	33,548
1999	8,429	27.9	21,769	71.9	60	0.2	30,258

Juvenile and Adult Arrests, 1990-1999



Arrests by Age Group, 1990-1999

Age Group	1990	1991	1992	1993	1994	1995	1996	1997	1998	1999
Under 10	213	217	200	207	199	281	208	204	205	202
10-12	573	713	809	754	765	895	881	953	758	628
13-14	1486	1677	1784	1827	2137	2396	2433	2429	2165	1877
15	1272	1223	1461	1395	1609	1796	2077	1980	1775	1586
16	1370	1340	1501	1873	1646	2044	2138	2115	2034	1977
17	1586	1455	1686	1687	1890	2020	2201	2099	2238	2159
18	1763	1906	1887	1810	1828	2306	2238	2210	2610	2356
19	2072	1878	2110	1783	2143	2238	2279	2330	2611	2693
20	1779	1777	1749	1753	1774	1997	1991	2170	2366	2220
21	1138	1081	1086	1057	1200	1320	1304	1240	1385	1186
22	970	902	1029	1057	1057	1149	1163	1166	1063	1039
23	860	768	809	858	930	940	1026	922	1040	807
24	839	703	703	677	859	951	929	911	821	741
25-29	3340	3104	2830	2841	3002	3242	3506	3451	3390	2858
30-34	2204	2214	2258	2347	2542	2910	3023	2709	2642	2230
35-39	1460	1587	1624	1711	1854	2278	2264	2494	2497	2166
40-44	935	1012	1029	1046	1244	1431	1633	1710	1689	1500
45-49	613	579	592	659	717	901	918	958	967	919
50-54	359	379	373	378	463	485	516	523	513	515
55-59	280	243	213	226	225	262	251	266	270	234
60-64	169	132	149	122	126	154	143	153	103	107
65 +	227	249	244	292	263	256	225	215	221	198
Age Not Reported		393	445	310	264	147	267	426	185	60
Arrest Total	25508	25532	26571	26670	28737	32399	33614	33634	33548	30258

Arrests by Offense, 1990-1999

Offense Classification	1990	1991	1992	1993	1994	1995	1996	1997	1998	1999
Murder/Non-Neg. Manslaughter	5	5	8	9	3	11	11	3	5	6
Negligent Manslaughter	7	3	3	2	2	1	1	1	2	4
Forcible Rape	54	30	54	49	43	54	51	35	44	24
Robbery	22	18	29	22	31	31	38	30	28	28
Aggravated Assault	200	114	141	155	127	176	193	180	168	108
Burglary	493	409	555	513	407	374	410	413	426	409
Larceny/Theft	3162	3524	3492	3409	3346	3742	3718	3093	2671	2327
Motor Vehicle Theft	282	272	318	320	336	358	334	307	286	289
Other Assaults	788	931	1067	1227	1337	1536	1671	1550	1567	1651
Arson	25	55	31	19	25	34	24	36	33	16
Forgery and Counterfeiting	353	204	247	214	286	261	223	189	191	160
Fraud	2649	4252	4205	4255	5661	5839	6006	5491	4291	3274
Embezzlement	6	4		6	5	5	14	5	6	6
Stolen Property Offenses	279	196	176	172	140	156	204	159	150	84
Vandalism	610	678	819	874	844	806	631	855	774	709
Weapons Offenses	102	85	116	143	157	139	121	119	102	107
Prostitution	5	2	3	1	1	4	2		7	3
Other Sex Offenses	126	95	85	85	72	89	103	99	82	76
Drug Abuse Violations	745	461	517	643	779	799	1106	1242	1517	1456
Gambling	24	9	16	2	3	0	3	1	6	5
Off. Against Family & Children	210	167	334	271	229	344	283	327	401	200
Driving Under the Influence	4322	4607	4781	4418	4206	4439	4467	4777	5187	5179
Liquor Law Violations	4641	4448	4475	4188	4401	5109	5260	5521	6231	6377
Disorderly Conduct	1013	1132	1139	1253	1253	1579	1468	1487	1783	1568
Vagrancy	2		6		1	20		4	2	8
All Other Offenses	4243	2750	2722	3060	3509	4970	5602	6164	6392	4998
Suspicion	15	38	6					17		1
Curfew and Loitering	359	337	364	409	495	414	561	486	347	382
Runaways	766	706	862	951	1038	1109	1109	1043	849	803
Arrest Total	25508	25532	26571	26670	28737	32399	33614	33634	33548	30258

Juvenile Arrests by Offense, 1990-1999

Offense Classification	1990	1991	1992	1993	1994	1995	1996	1997	1998	1999
Murder/Non-Neg. Manslaughter				2		9	1			1
Negligent Manslaughter		2			1					1
Forcible Rape	8	6	13	8	13	16	12	6	13	6
Robbery	8	1	8	14	8	13	10	13	8	9
Aggravated Assault	28	34	30	47	37	68	45	35	47	25
Burglary	171	166	272	226	197	208	201	222	201	202
Larceny/Theft	1602	1947	1972	1900	1846	2066	2056	1771	1372	1212
Motor Vehicle Theft	160	178	211	196	223	262	198	205	162	185
Other Assaults	193	247	316	368	379	467	517	424	420	401
Arson	17	47	26	13	19	24	20	25	23	10
Forgery and Counterfeiting	77	49	52	51	77	65	54	46	42	37
Fraud	12	11	13	23	19	16	28	20	28	17
Embezzlement				1		1				
Stolen Property Offenses	159	132	93	109	86	83	138	105	81	49
Vandalism	444	455	551	605	609	569	420	654	532	420
Weapons Offenses	42	40	56	64	61	62	50	34	30	27
Prostitution							2			
Other Sex Offenses	30	28	28	34	25	31	30	32	32	18
Drug Offenses	94	26	27	63	84	136	205	229	269	284
Gambling	1									
Off. Against Family/Children	3	41	155	126	97	142	109	96	110	98
Driving Under the Influence	90	83	86	85	77	77	62	104	114	169
Liquor Law Violations	1279	1143	1297	1291	1426	1712	1900	1976	2169	2176
Disorderly Conduct	315	346	315	356	454	579	575	611	762	709
Vagrancy			2							1
All Other Offenses	636	571	689	801	975	1303	1635	1643	1564	1187
Suspicion	6	30	3							
Curfew and Loitering	359	337	364	409	495	414	561	486	347	382
Runaways	766	705	862	951	1038	1109	1109	1043	849	803
Juvenile Arrest Total	6500	6625	7441	7743	8246	9432	9938	9780	9175	8429

Juvenile Arrests by Gender, 1990-1999

Year	Male	% of Total	Female	% of Total	Total
1990	4,531	69.7 %	1,969	30.3 %	6,500
1991	4,782	72.2	1,843	27.8	6,625
1992	5,241	70.4	2,200	29.6	7,441
1993	5,452	70.4	2,291	29.6	7,743
1994	5,726	69.4	2,520	30.6	8,246
1995	6,423	68.1	3,009	31.9	9,432
1996	6,512	65.5	3,426	34.5	9,938
1997	6,363	65.1	3,417	34.9	9,780
1998	6,129	66.8	3,046	33.2	9,175
1999	5,457	64.7	2,972	35.3	8,429

Adult Arrests by Offense, 1990-1999

Offense Classification	1990	1991	1992	1993	1994	1995	1996	1997	1998	1999
Murder/Non-Neg. Manslaughter	5	5	7	7	3	2	10	3	5	5
Negligent Manslaughter	7	1	2	2	1	1	1	1	2	3
Forcible Rape	46	23	40	40	29	36	39	29	31	18
Robbery	14	16	21	8	23	18	28	17	20	19
Aggravated Assault	172	77	110	107	89	108	147	144	121	82
Burglary	322	240	280	283	204	164	208	185	220	205
Larceny/Theft	1560	1555	1505	1485	1472	1662	1656	1306	1292	1110
Motor Vehicle Theft	122	91	100	121	106	93	133	99	124	104
Other Assaults	595	675	742	849	946	1067	1151	1106	1136	1244
Arson	8	8	5	6	5	10	4	11	10	6
Forgery and Counterfeiting	276	152	189	157	207	195	169	140	148	123
Fraud	2637	4058	3995	4108	5542	5771	5874	5354	4173	3243
Embezzlement	6	3		5	5	4	13	5	6	6
Stolen Property Offenses	120	63	82	54	54	71	66	53	68	35
Vandalism	166	210	260	260	230	235	209	190	242	287
Weapons Offenses	60	44	60	78	96	77	69	83	72	80
Prostitution	5	2	3	1	1	4			7	3
Other Sex Offenses	96	67	54	49	46	58	73	66	49	58
Drug Offenses	651	433	459	572	684	660	894	998	1248	1169
Gambling	23	7	16	2	3		3	1	6	5
Off. Against Family/Children	207	123	174	144	132	202	174	230	291	100
Driving Under the Influence	4232	4494	4632	4289	4102	4351	4364	4629	5051	5005
Liquor Law Violations	3362	3241	3139	2884	2942	3370	3323	3462	4033	4191
Disorderly Conduct	698	778	820	893	792	995	891	866	1017	856
Vagrancy	2		4		1	20		4	2	7
All Other Offenses	3607	2140	1983	2213	2512	3646	3910	4429	4814	3804
Suspicion	9	8	3					17		1
Adult Arrest Total	19008	18514	18685	18617	20227	22820	23409	23428	24188	21769

Adult Arrests by Gender, 1990-1999

Year	Male	% of Total	Female	% of Total	Total
1990	14,688	77.3 %	4,320	22.7 %	19,008
1991	13,845	74.8	4,669	25.2	18,514
1992	14,204	76.0	4,481	24.0	18,685
1993	14,225	76.4	4,392	23.6	18,617
1994	15,004	74.2	5,223	25.8	20,227
1995	16,828	73.7	5,992	26.3	22,820
1996	17,283	73.8	6,126	26.2	23,409
1997	17,354	74.1	6,074	25.9	23,428
1998	18,280	75.6	5,908	24.4	24,188
1999	16,304	74.9	5,465	25.1	21,769

Drug Arrest Analysis

Drug offense arrests declined four percent from 1,517 in 1998 to 1,456 in 1999. The arrest totals shown should not be interpreted as the number of individuals arrested for drug offenses because it is possible that some individuals may have been arrested on more than one occasion for this offense.

Eighty percent of drug arrests in 1999 were arrests of males.

Juveniles, persons under the age of 18, comprised approximately 20 percent of the total in 1999.

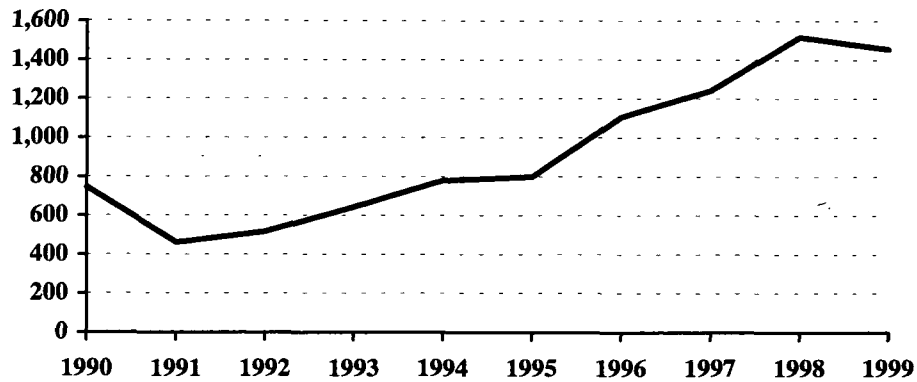
Approximately 82 percent of the drug arrests during the 10-year period were arrests for possession of drugs.

Eighty-one percent of the arrests for drug offenses during the period 1990-1999 involved marijuana.

Arrests for Drug Offenses, 1990-1999

Year	Total	Percent Change from Previous Year
1990	745	9.2 %
1991	461	-38.1
1992	517	12.1
1993	643	24.4
1994	779	21.2
1995	799	2.6
1996	1,106	38.4
1997	1,242	12.3
1998	1,517	22.1
1999	1,456	-4.0

Arrests for Drug Offenses, 1990-1999



Drug Arrests by Gender, 1990-1999

Year	Male	% of Total	Female	% of Total	Total
1990	612	82.1 %	133	17.9 %	745
1991	380	82.4	81	17.6	461
1992	446	86.3	71	13.7	517
1993	546	84.9	97	15.1	643
1994	659	84.6	120	15.4	779
1995	646	80.9	153	19.1	799
1996	888	80.3	218	19.7	1,106
1997	1,035	83.3	207	16.7	1,242
1998	1,260	83.1	257	16.9	1,517
1999	1,161	79.7	295	20.3	1,456

Drug Arrests by Age Category, 1990-1999

Year	Juvenile	Percent of Total	Adult	Percent of Total	Age Not Reported	Percent of Total	Total
1990	94	12.6 %	651	87.4 %			745
1991	26	5.7	433	93.9	2	0.4 %	461
1992	27	5.2	459	88.8	31	6.0	517
1993	63	9.8	572	89.0	8	1.2	643
1994	84	10.8	684	87.8	11	1.4	779
1995	136	17.0	660	82.6	3	0.4	799
1996	205	18.6	894	80.8	7	0.6	1,106
1997	229	18.4	998	80.4	15	1.2	1,242
1998	269	17.7	1,248	82.3			1,517
1999	284	19.5	1,169	80.3	3	0.2	1,456

Drug Arrests by Age Group, 1990-1999

Age Group	1990	1991	1992	1993	1994	1995	1996	1997	1998	1999
Under 10									1	
10-12	2		3		1	3	1	4	6	2
13-14	18	2	5	14	11	19	38	35	27	33
15	19	2	3	10	14	26	33	44	49	47
16	28	12	4	21	21	39	67	55	75	104
17	27	10	12	18	37	49	66	91	111	98
18	50	25	20	32	53	72	106	122	158	138
19	50	22	27	35	54	74	109	105	133	133
20	54	27	26	48	40	66	79	102	97	93
21	42	17	21	24	29	38	46	52	87	62
22	49	17	25	29	44	29	45	50	60	80
23	23	15	22	20	34	18	29	38	54	56
24	29	26	22	31	32	23	42	46	37	56
25-29	166	116	108	126	131	79	139	143	185	144
30-34	116	96	116	126	119	111	134	116	150	147
35-39	45	40	46	65	84	101	99	127	154	125
40-44	14	16	17	22	47	32	36	66	84	76
45-49	5	8	6	10	14	9	24	24	33	39
50-54	1	3	1	4	1	7	3	6	10	14
55-59	3	1			2		2	1	5	6
60-64	3	4	1			1	1		1	
65 +	1		1							
No Age Data		2	31	8	11	3	7	15		3
Total	745	461	517	643	779	799	1106	1242	1517	1456

Drug Arrests by Type of Offense, 1990-1999

Year	Sale or Manufacture	% of Total	Possession	% of Total	Total
1990	303	40.7 %	442	59.3 %	745
1991	124	26.9	337	73.1	461
1992	137	26.5	380	73.5	517
1993	132	20.5	511	79.5	643
1994	200	25.7	579	74.3	779
1995	92	11.5	707	88.5	799
1996	183	16.5	923	83.5	1,106
1997	109	8.8	1,133	91.2	1,242
1998	257	16.9	1,260	83.1	1,517
1999	159	10.9	1,297	89.1	1,456

Drug Arrests by Age Category and Type of Offense, 1990-1999

Year	Juvenile		Adult		Age Not Reported	
	Sale or Manufacture	Possession	Sale or Manufacture	Possession	Sale or Manufacture	Possession
1990	39	55	264	387		
1991	10	16	113	320	1	1
1992	5	22	122	337	10	21
1993	8	55	116	456	8	
1994	14	70	184	500	2	9
1995	14	122	78	582		3
1996	23	182	158	736	2	5
1997	24	205	82	916	3	12
1998	37	232	220	1,028		
1999	11	273	145	1,024	3	

Drug Arrests by Type of Drug, 1990-1999

Year	Opiates, Cocaine or Derivatives	Percent of Total	Marijuana	Percent of Total	Other Drugs or Narcotics	Percent of Total	Total
1990	99	13.3 %	438	58.8 %	208	27.9 %	745
1991	23	5.0	352	76.3	86	18.7	461
1992	23	4.4	457	88.4	37	7.2	517
1993	23	3.6	585	91.0	35	5.4	643
1994	37	4.7	672	86.3	70	9.0	779
1995	21	2.6	687	86.0	91	11.4	799
1996	59	5.3	914	82.7	133	12.0	1,106
1997	39	3.1	1,050	84.6	153	12.3	1,242
1998	96	6.3	1,189	78.4	232	15.3	1,517
1999	53	3.6	1,173	80.6	230	15.8	1,456

Drug Arrests by Age Category and Type of Drug, 1990-1999

Year	Juvenile			Adult			Age Not Reported		
	Opiates, Cocaine or Deriv.	Marijuana	Other Drugs or Narcotics	Opiates, Cocaine or Deriv.	Marijuana	Other Drugs or Narcotics	Opiates, Cocaine or Deriv.	Marijuana	Other Drugs or Narcotics
1990	11	45	38	88	393	170			
1991	1	20	5	22	331	80		1	1
1992	1	20	6	22	409	28		28	3
1993		61	2	23	518	31		6	2
1994	8	68	8	29	593	62		11	
1995		122	14	21	562	77		3	
1996	2	186	17	56	722	116	1	6	
1997	2	197	30	37	842	119		11	4
1998	5	227	37	91	962	195			
1999		260	24	52	911	206	1	2	

DUI Arrest Analysis

DUI arrests declined slightly from 5,187 in 1998 to 5,179 in 1999. The arrest totals should not be interpreted as the number of individuals arrested for DUI offenses because it is possible that some individuals may have been arrested on more than one occasion.

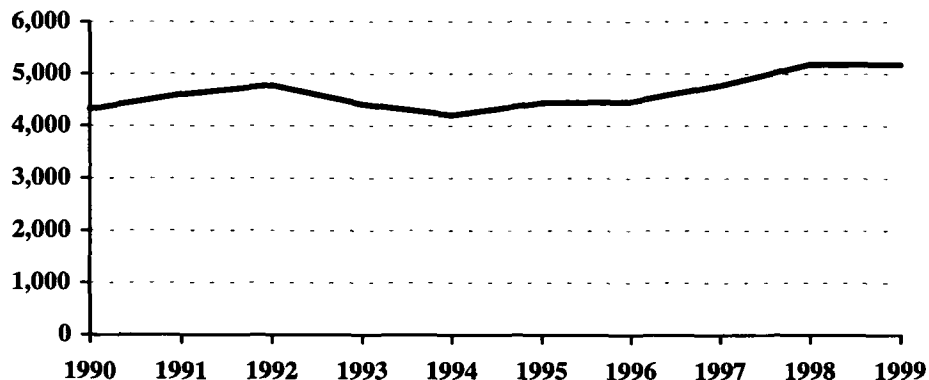
Eighty percent of the DUI arrests in 1999 were arrests of males.

Juveniles, persons under the age of 18, made up about 3.3 percent of the total in 1999.

DUI Arrests, 1990-1999

Year	DUI Arrests Reported	Percent Change from Previous Year
1990	4,322	4.8 %
1991	4,607	6.6
1992	4,781	3.8
1993	4,418	-7.6
1994	4,206	-4.8
1995	4,439	5.5
1996	4,467	0.6
1997	4,777	6.9
1998	5,187	8.6
1999	5,179	-0.2

DUI Arrests, 1990-1999



DUI Arrests by Gender, 1990-1999

Year	Male	% of Total	Female	% of Total	Total
1990	3,639	84.2 %	683	15.8 %	4,322
1991	3,830	83.1	777	16.9	4,607
1992	3,987	83.4	794	16.6	4,781
1993	3,651	82.6	767	17.4	4,418
1994	3,481	82.8	725	17.2	4,206
1995	3,672	82.7	767	17.3	4,439
1996	3,652	81.8	815	18.2	4,467
1997	3,917	82.0	860	18.0	4,777
1998	4,185	80.7	1,002	19.3	5,187
1999	4,149	80.1	1,030	19.9	5,179

DUI Arrests by Age Category, 1990-1999

Year	Juvenile	Percent of Total	Adult	Percent of Total	Age Not Reported	Percent of Total	Total
1990	90	2.1 %	4,232	97.9 %			4,322
1991	83	1.8	4,494	97.5	30	0.7 %	4,607
1992	86	1.8	4,632	96.9	63	1.3	4,781
1993	85	1.9	4,289	97.1	44	1.0	4,418
1994	77	1.8	4,102	97.5	27	0.7	4,206
1995	77	1.7	4,351	98.0	11	0.3	4,439
1996	62	1.4	4,364	97.7	41	0.9	4,467
1997	104	2.2	4,629	96.9	44	0.9	4,777
1998	114	2.2	5,051	97.4	22	0.4	5,187
1999	169	3.3	5,005	96.6	5	0.1	5,179

DUI Arrests by Age Group, 1990-1999

Age Group	1990	1991	1992	1993	1994	1995	1996	1997	1998	1999
Under 10								1		
10-12				1		1				2
13-14	1	4	1	1	1	2	2	3	2	4
15	4	6	10	10	9	9	10	8	10	14
16	27	21	22	22	12	16	13	40	42	32
17	58	52	53	51	55	49	37	52	60	117
18	137	160	116	104	100	94	107	103	158	141
19	175	170	162	130	123	121	112	143	174	228
20	167	191	166	151	139	143	144	180	181	228
21	215	231	231	224	222	205	214	234	272	274
22	198	187	237	226	195	203	212	225	203	269
23	196	192	186	183	175	163	195	156	234	220
24	187	156	193	141	143	189	185	162	194	203
25-29	875	875	868	760	670	690	702	755	777	770
30-34	670	772	812	778	751	756	713	711	713	641
35-39	449	542	587	575	565	617	624	717	752	754
40-44	306	372	416	375	383	435	475	506	566	493
45-49	227	250	238	255	262	313	295	293	396	351
50-54	142	154	145	149	162	173	159	191	188	207
55-59	129	101	100	88	86	111	88	110	107	101
60-64	81	64	73	54	52	59	56	69	58	50
65 +	78	77	102	96	74	79	83	74	78	75
No Age Data		30	63	44	27	11	41	44	22	5
Total	4322	4607	4781	4418	4206	4439	4467	4777	5187	5179

UCR OFFENSE DEFINITIONS

(This page intentionally left blank.)

UNIFORM CRIME REPORTING OFFENSE DEFINITIONS

Offenses in Uniform Crime Reporting are divided into two groups designated as Part I and Part II crimes. Information on the number of Part I offenses known to law enforcement, the number cleared by arrest or exceptional means, and the number of persons arrested is reported monthly. Arrest data are reported for Part I and Part II offenses. The Crime Index is composed of offenses 1-7 with the exception as noted in item 1 below.

NOTE: The classifications of these offenses for UCR reporting purposes are based on law enforcement investigation as opposed to determination by a court, medical examiner, jury, or other judicial hearing.

PART I OFFENSES:

1. CRIMINAL HOMICIDE

a. Murder and Non-Negligent Manslaughter

The willful (non-negligent) killing of one human being by another. Deaths caused by negligence, attempts to kill, assaults to kill, suicides, accidental deaths, and justifiable homicides are excluded. Justifiable homicides are limited to: (1) the killing of a felon by a law enforcement officer in the line of duty, and (2) the killing of a felon by a private citizen.

b. Manslaughter by Negligence

The killing of another person through gross negligence. Excludes traffic fatalities. While manslaughter by negligence is a Part I crime, it is not included in the Crime Index.

2. FORCIBLE RAPE

The carnal knowledge of a female forcibly and against her will. Included are rapes by force and attempts or assaults to rape. Statutory offenses (no force used -- victim under age of consent) are excluded.

3. ROBBERY

The taking or attempting to take anything of value from the care, custody, or control of a person or persons by force or threat of force or violence, or putting the victim in fear.

4. AGGRAVATED ASSAULT

An unlawful act by one person upon another for the purpose of inflicting severe or aggravated bodily injury. This type of assault usually is accompanied by the use of a weapon or by a means likely to produce death or great bodily harm. Simple assaults are excluded.

5. BURGLARY

Breaking or entering. The unlawful entry of a structure to commit a felony or theft. Attempted forcible entry is included.

6. LARCENY/THEFT

The unlawful taking, carrying, leading, or riding away of property from the possession or constructive possession of another. Examples are thefts of bicycles or automobile accessories, shoplifting, pocket-picking, or the stealing of any property or article which is not taken by force and violence or by fraud. Attempted larcenies are included. Embezzlement, "con" games, forgery, worthless checks, etc., are excluded.

7. MOTOR VEHICLE THEFT

The theft or attempted theft of a motor vehicle. A motor vehicle is self-propelled and runs on the surface and not on rails. Specifically excluded from this category are motorboats, construction equipment, airplanes, and farming equipment.

8. ARSON

Any willful or malicious burning or attempting to burn, with or without intent to defraud, a dwelling house, public building, motor vehicle, personal property of another, etc.

PART II OFFENSES:

9. OTHER ASSAULTS (SIMPLE)

Assaults or attempted assaults where no weapon was used or which did not result in serious or aggravated injury to the victim.

10. FORGERY AND COUNTERFEITING

Making, altering, uttering, or possessing, with the intent to defraud, anything false which is made to appear true. Attempts are included.

11. FRAUD

Fraudulent conversion and obtaining money or property by false pretenses. Included are larceny by bailee and bad checks except forgeries and counterfeiting. Attempts are included.

12. EMBEZZLEMENT

Misappropriation or misapplication of money or property entrusted to one's care, custody or control. Attempts are included.

13. STOLEN PROPERTY -- BUYING, RECEIVING, POSSESSING

Buying, receiving, or possessing stolen property, including attempts.

14. VANDALISM

Willful or malicious destruction, injury, disfigurement, or defacement of any public or private property, real or personal, without consent of the owner or person having custody or control. Attempts are included.

15. WEAPON OFFENSES -- CARRYING, POSSESSING, ETC.

All violations of regulations or statutes controlling the carrying, using, possessing, furnishing, and manufacturing of deadly weapons or silencers. Attempts are included.

16. PROSTITUTION AND COMMERCIALIZED VICE

Sex offenses of a commercialized nature, such as prostitution, keeping a bawdy house, procuring, or transporting women for immoral purposes. Attempts are included.

17. OTHER SEX OFFENSES (except forcible rape, prostitution and commercialized vice)

Statutory rape and offenses against chastity, common decency, morals and the like. Attempts are included.

18. DRUG ABUSE VIOLATIONS

State and local offenses relating to narcotic and non-narcotic drugs, such as unlawful possession, sale, use, growing and manufacturing of narcotic and non-narcotic drugs. Attempts are included.

19. GAMBLING

Promoting, permitting, or engaging in illegal gambling.

20. OFFENSES AGAINST FAMILY AND CHILDREN

Non-support, neglect, desertion, or abuse of family and children.

21. DRIVING UNDER THE INFLUENCE

Driving or operating any vehicle or common carrier while drunk or under the influence of liquor or drugs.

22. LIQUOR LAWS

State or local liquor law violations, except "drunkenness" (offense 23) and "driving under the influence" (offense 21).

23. DRUNKENNESS

Drunkenness or intoxication. Excluded is "driving under the influence" (offense 21). This is not a crime in North Dakota, but is included in the national program.

24. DISORDERLY CONDUCT

Breach of peace.

25. VAGRANCY

Vagabondage, begging, loitering, etc.

26. ALL OTHER OFFENSES

All violations of state or local laws, except offenses 1-25 and traffic offenses.

27. SUSPICION

No specific offense; suspect released without formal charges being placed.

28. CURFEW AND LOITERING

Offenses relating to violation of local curfew and loitering ordinances where such laws exist.

29. RUNAWAYS

Limited to juveniles taken into protective custody under provisions of local statutes.

**FULL-TIME LAW
ENFORCEMENT EMPLOYEES**

(This page intentionally left blank.)

**NUMBER OF FULL-TIME LAW ENFORCEMENT EMPLOYEES
REPORTED BY UCR AGENCIES
AS OF OCTOBER 31, 1999**

Agency	Law Enforcement Officers		Civilian Personnel		Total Full-Time			Population
	Male	Female	Male	Female	Male	Female	Total	
Adams SO	4				4		4	2,695
Barnes SO	6			1	6	1	7	5,059
Valley City PD	11	1	3	2	14	3	17	6,813
Benson SO	4				4		4	6,844
Billings SO	3			1	3	1	4	1,050
Bottineau SO	9		3	1	12	1	13	7,174
Bowman SO	1				1		1	1,701
Bowman PD	3				3		3	1,592
Burke SO	3	1			3	1	4	1,943
Powers Lake PD	1				1		1	307
Burleigh SO	30	5	17	6	47	11	58	12,735
Bismarck PD	75	6	7	20	82	26	108	53,652
Cass SO	38	9	9	12	47	21	68	15,908
Fargo PD	86	15	4	28	90	43	133	86,430
West Fargo PD	19	2	1	7	20	9	29	13,990
NDSU PD	9				9		9	
Cavalier SO	5		3	3	8	3	11	4,975
Dickey SO	4			1	4	1	5	3,941
Oakes PD	3				3		3	1,663
Divide SO	2				2		2	1,328
Crosby PD	3				3		3	1,021
Dunn SO	3			1	3	1	4	3,534
Eddy SO	4	1			4	1	5	2,827
Emmons SO	3				3		3	3,059
Linton PD	NR							1,221
Foster SO	2			1	2	1	3	1,679
Carrington PD	4				4		4	2,096
Golden Valley SO	2	1		1	2	2	4	1,863
Grand Forks SO	22			6	22	6	28	15,649
Grand Forks PD	68	7	7	9	75	16	91	46,988
Larimore PD	2				2		2	1,303
Northwood PD	2				2		2	1,067
Emerado PD	1				1		1	460
Thompson PD	1				1		1	922
UND PD	9	1	2	1	11	2	13	
Grant SO	2				2		2	1,993
Carson PD	1				1		1	315
Elgin PD	1				1		1	640
Griggs SO	2				2		2	1,719
Cooperstown PD	1				1		1	1,103
Hettinger SO	3				3		3	2,903
Kidder SO	2			1	2	1	3	2,221
Steele PD	1				1		1	635
LaMoure SO	3	1		1	3	2	5	4,725
Logan SO	2				2		2	1,572
Napoleon PD	1				1		1	766
McHenry SO	5			1	5	1	6	6,032
McIntosh SO	2				2		2	2,431
Wishek PD	1				1		1	986
McKenzie SO	5			4	5	4	9	4,095
Watford City PD	4				4		4	1,546
McLean SO	22			3	22	3	25	9,634
Mercer SO	7		5	6	12	6	18	3,159
Beulah PD	6			1	6	1	7	3,135
Hazen PD	4				4		4	2,587
Stanton PD	1				1		1	469
Morton SO	18		6	6	24	6	30	8,653
Mandan PD	26	2	1	6	27	8	35	15,746
Mountrail SO	4		1	3	5	3	8	5,664
Parshall PD	1				1		1	921

Agency	Law Enforcement Officers		Civilian Personnel		Total Full-Time			Population
	Male	Female	Male	Female	Male	Female	Total	
Nelson SO	4			1	4	1	5	3,689
Oliver SO	2			1	2	1	3	2,199
Pembina SO	14	1	2	4	16	5	21	7,016
Cavalier PD	4				4		4	1,408
Pierce SO	3		1	3	4	3	7	1,891
Rugby PD	4				4		4	2,699
Ramsey SO	6			1	6	1	7	4,636
Devils Lake PD	13	3		2	13	5	18	7,397
Ransom SO	4	1			4	1	5	3,581
Lisbon PD	2	1			2	1	3	2,154
Renville SO	4	1			4	1	5	2,788
Richland SO	10		7	2	17	2	19	8,886
Wahpeton PD	14			2	14	2	16	9,255
Rolette SO	9		3	2	12	2	14	14,117
Sargent SO	3			1	3	1	4	4,425
Sheridan SO	3				3		3	1,682
Sioux SO	1				1		1	4,162
Slope SO	1				1		1	859
Stark SO	9			3	9	3	12	6,512
Dickinson PD	22	1	1	10	23	11	34	16,105
Steele SO	NR							2,247
Stutsman SO	8			2	8	2	10	6,207
Jamestown PD	27	2		4	27	6	33	14,607
Towner SO	2			1	2	1	3	1,711
Cando PD	3				3		3	1,285
Trail SO	4			5	4	5	9	3,655
Hillsboro PD	2				2		2	1,423
Mayville/Portland PD	3				3		3	2,644
Hatton PD		1				1	1	761
Walsh SO	9		3	3	12	3	15	8,355
Grafton PD	11			1	11	1	12	5,080
Ward SO	17	2	12	12	29	14	43	23,224
Minot PD	51	4	6	16	57	20	77	35,033
Wells SO	2				2		2	2,633
Harvey PD	3				3		3	1,973
Fessenden PD	1				1		1	557
Williams SO	20	2	4	2	24	4	28	7,648
Williston PD	20	1	1	7	21	8	29	12,357
Highway Patrol	122	5	35	27	157	32	189	
Total	1004	77	144	245	1,148	322	1,470	634,000

PROPERTY OF
National Criminal Justice Reference Service (NCJRS)
708 3349-3600





