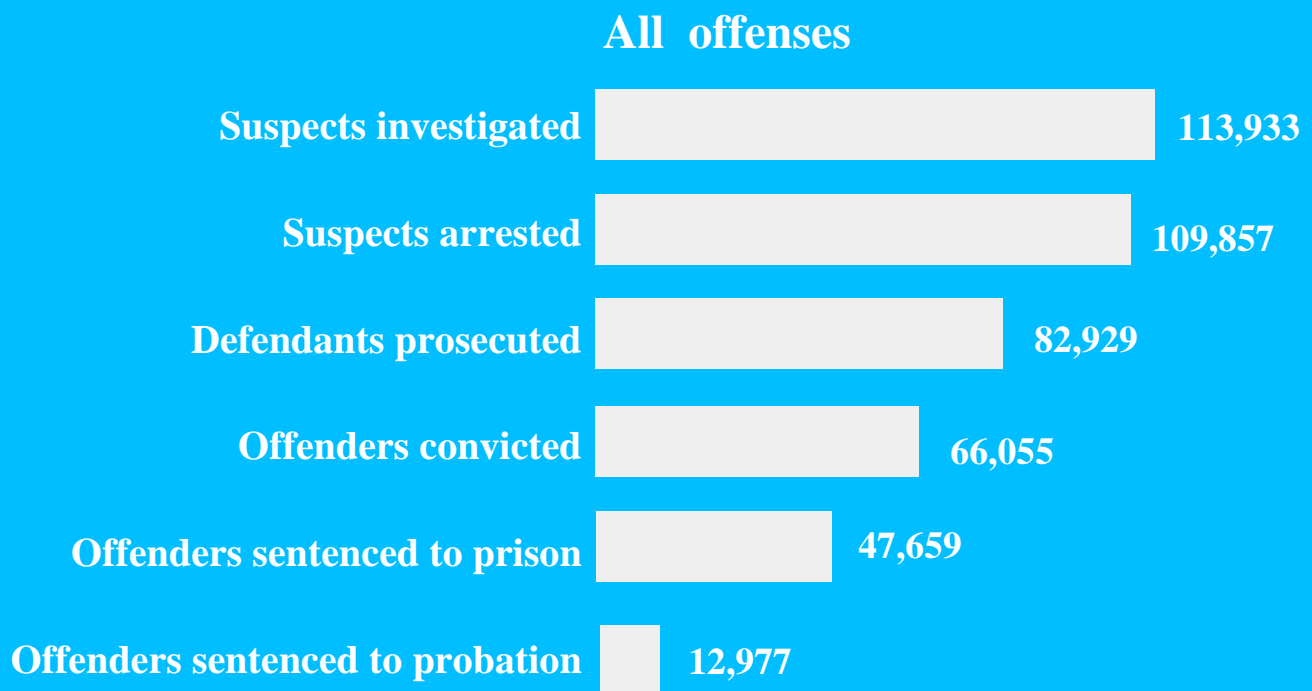




Bureau of Justice Statistics

Compendium of Federal Justice Statistics, 1999

Federal criminal case processing, October 1, 1998, through September 30, 1999



A Federal Justice Statistics Program Report

U.S. Department of Justice
Office of Justice Programs
810 Seventh Street, N.W.
Washington, D.C. 20531

John Ashcroft
Attorney General

Office of Justice Programs
World Wide Web site:
<http://www.ojp.usdoj.gov>

Bureau of Justice Statistics
World Wide Web site:
<http://www.ojp.usdoj.gov/bjs/>

For information contact:
BJS Clearinghouse
1-800-732-3277



Compendium of Federal Justice Statistics, 1999

April 2001, NCJ 186179

Discussion	37
-------------------------	-----------

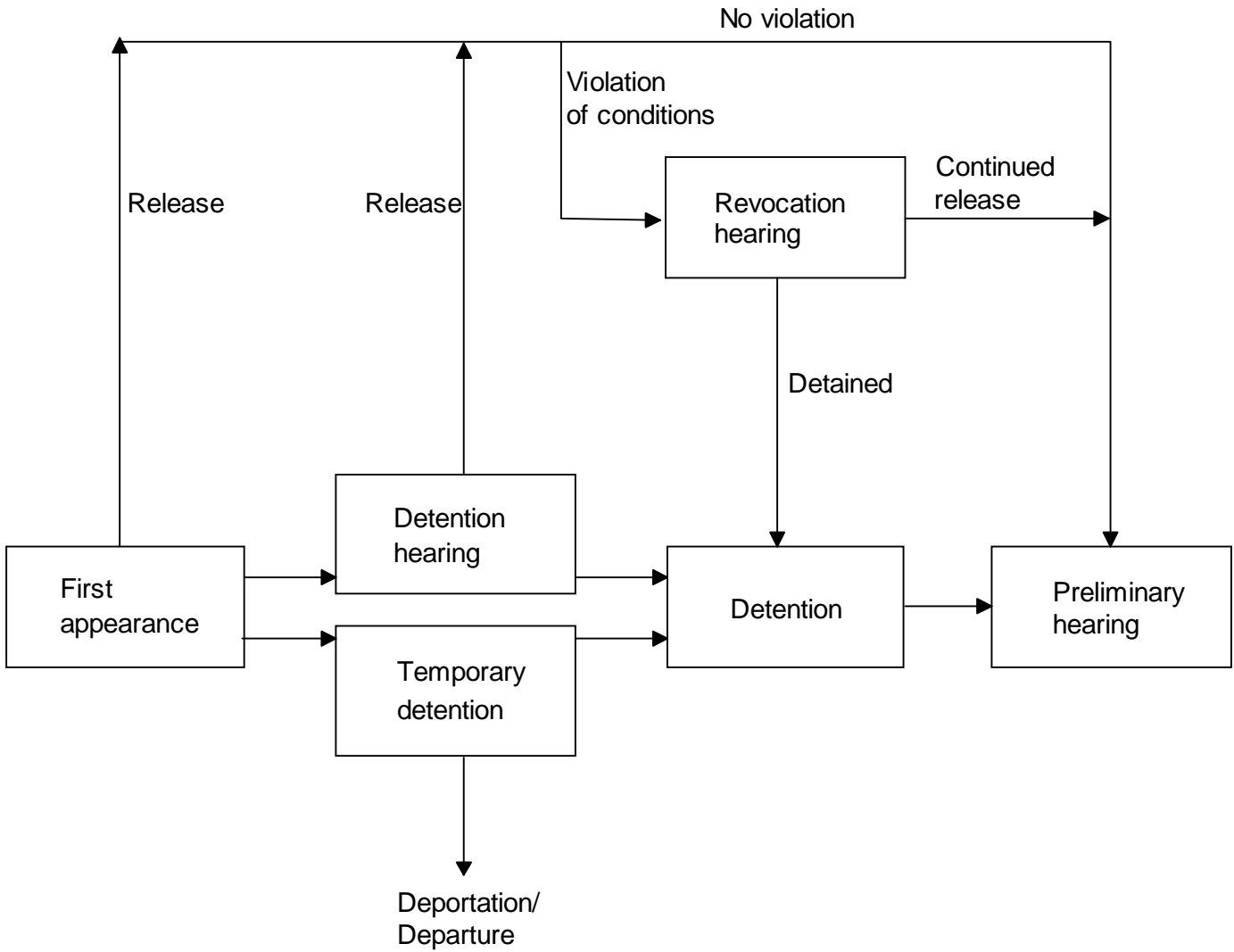
Tables*October 1, 1998 - September 30, 1999*

3.1. Type of pretrial release, by offense	41
3.2. Type of pretrial release, by defendant characteristics	42
3.3. Form of pretrial detention, by offense	43
3.4. Form of pretrial detention, by defendant characteristics	44
3.5. Pretrial detention hearing outcomes, by offense	45
3.6. Pretrial detention hearing outcomes, by defendant characteristics	46
3.7. Behavior of defendants released prior to trial, by offense	47
3.8. Behavior of defendants released prior to trial, by type of release	47
3.9. Behavior of defendants released prior to trial, by defendant characteristics	48
3.10. Length of pretrial detention, by form of release or detention, and most serious offense charged	49

Chapter notes	50
----------------------------	-----------

Chapter 3

Pretrial release



The Bail Reform Act of 1984 (18 U.S.C. § 3141) sets the terms for release and detention of defendants facing charges in Federal courts. At the time defendants first appear before a judicial officer, they may be (1) released on personal recognizance or unsecured bond; (2) released subject to conditions imposed by the court, possibly including traditional bail; (3) temporarily detained without bail (limited to 10 working days) to permit deportation, exclusion, or the revocation of previously granted conditional release; or (4) detained pending the outcome of a detention hearing.*

According to the statute, a defendant must be brought before a judicial officer without "unnecessary delay" upon arrest. The judicial officer, who may be a judge but is generally a U.S. magistrate, determines whether the defendant will be released or detained prior to trial. If a hearing is required, the release decision may be delayed no longer than 3 days (or 5 days if requested by the defendant).

At the initial appearance a recommendation to detain the defendant is made by the U.S. attorney and/or the pretrial services officer. If the court concurs with the recommendation to detain the defendant, a pretrial detention hearing is scheduled — typically within 1 week of the initial appearance. At the pretrial detention hearing evidence is presented to show cause why the defendant should be detained pending adjudication of the charges.

Recommendations to detain a defendant are limited to those instances where the defendant was charged with (1) a crime of violence, (2) an offense with a statutory maximum sentence of life imprisonment or death, (3) a drug offense with a statutory maximum sentence of 10 years or more imprisonment, or (4) any felony offense if the defendant had been convicted on two or more occasions of an offense described above or a similar State-level offense. Additionally, a detention recommendation may

be made if there is a serious risk that the defendant would flee in an attempt to avoid prosecution or would obstruct justice or intimidate witnesses or jurors.

Types of pretrial release

Defendants may be released without financial conditions according to the following:

Personal recognizance — defendant is released subject to no financial or other conditions.

Unsecured bond — no money is required to be posted before release, but defendant is liable for full bail amount if he or she fails to appear.

Conditional release — any combination of restrictions that are deemed necessary to guarantee the defendant's appearance at trial or the safety of the community. Non-financial conditions commonly place restrictions on the defendant's movements, associations, and/or actions. They may also involve employment or treatment for medical, psychological, or substance abuse conditions.

Defendants may also be released on financial conditions. Financial conditions include (1) deposit bond (the defendant is required to post a percentage of the total bail amount, usually 10%), (2) surety bond (the defendant is released subject to guarantees by a third person that the full amount will be paid), or (3) collateral bond (collateral equal to the full bail amount required to be posted by the defendant before release). Financial conditions may occur in combination with non-financial conditions.

Factors relating to release or detention

In deciding whether to release a defendant and in setting release conditions, the court is directed to consider the nature and circumstances of the offense charges, the weight of evidence against the defendant, the defendant's character, physical and mental condition, family ties, employment, financial resources, length of

residence in the community, community ties, past conduct, history relating to drug or alcohol abuse, criminal history, and record concerning appearance at court proceedings.

During 1999, 30,841 defendants were released for some period of time prior to trial (table 3.1). Those defendants released made up 47% of the 65,559 defendants who terminated pretrial services during 1999. Of the defendants released, 82% completed pretrial services without violating the conditions of their release (table 3.8).

In 1999, 44,626 defendants were detained for some period of time prior to the disposition of their case (table 3.3). Those defendants detained comprised about 68% of all defendants who terminated pretrial services during 1999. Included are those who were detained prior to having a preliminary hearing with the magistrate, at which point they could have been either released or ordered to have a detention hearing. Of the defendants detained, 55% were ordered detained by the court until case disposition.

Pretrial detention hearings were held for 33,188 defendants. Of these, 24,561, or 74%, were ordered detained (table 3.5).

Of the 30,841 defendants released prior to trial, 18% violated a condition of their release (table 3.7). The majority (91%) of these violations were technical violations of the bail conditions. Defendants released on deposit bond were more likely (26%) than other defendants to incur some violation of the conditions of their release (table 3.8). Conversely, defendants given conditional release violated their release at the lowest rates (4%). Seven percent of all released defendants had their release revoked.

Pretrial outcomes by offense categories

Releases (table 3.1) — Defendants charged with property offenses were more likely than other defendants to be released prior to criminal trial; in 1999, 81% of the 13,850 property offenders were released (figure 3.1).

*18 U.S.C. § 3142(e) (1984)

The percent released varied greatly across offense categories. Among violent offenders, 24% of those charged with robbery were released compared to 39% of those charged with murder and 59% of those charged with assault. Among public order offenders, 10% of those charged with immigration offenses were released compared to 96% of those charged with tax law violations and 46% of those with weapons offenses.

Nearly 41% of all drug defendants were released. Drug trafficking defendants were less likely to be released than those charged with non-trafficking offenses (40% compared to 54%), but defendants charged with trafficking offenses outnumbered those charged with nontrafficking offenses 10 to 1.

The release types for those defendants who were released prior to trial varied among offense categories (table 3.1). Within each major offense category except violent offenses, the highest percentage of defendants released was on unsecured bond. Of the 35% of released violent defendants, 41% were released on unsecured bond and 44% on personal recognizance compared to 81% of all property defendants released, of whom 54% were released on unsecured bond and 32% on personal recognizance.

Detentions (tables 3.3 and 3.5) — Among the major offense categories, defendants charged with drug or violent offenses were the most likely (81% each) to be detained for some period of time (table 3.3). However, violent defendants were more likely than drug offenders to be detained by the court (64% versus 54%). Property and public-order defendants were less likely to be detained than were drug and violent defendants. During 1999, 75% of public-order defendants were detained, with 57% of these detained by the court. Of public-order defendants, those charged with immigration offenses were the most likely to be detained (97%). In 1999, 31% of defendants charged with property

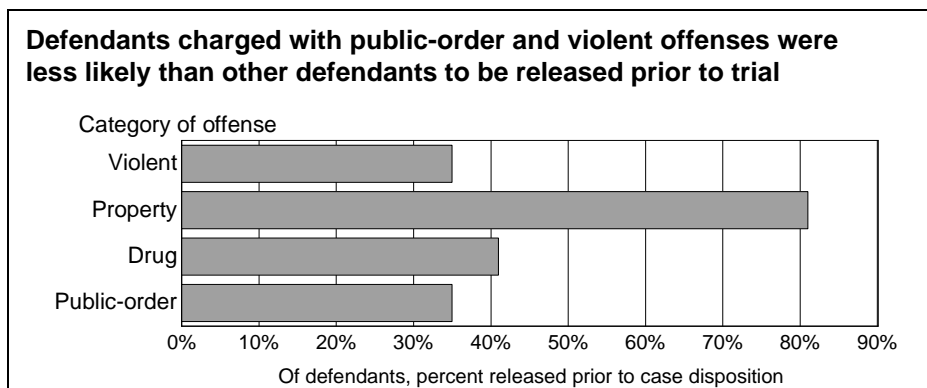


Figure 3.1. Percent of defendants released prior to case disposition, by offense category, October 1, 1998 - September 30, 1999

offenses were detained, with 45% of these detained by the court.

For 69% of defendants charged with violent offenses, it was decided at the initial appearance that a detention hearing was warranted (table 3.5, figure 3.2). This rate varied by offense category: 62% of those charged with drug-related offenses, 52% of those charged with public-order offenses, and 23% of those charged with property offenses were ordered to have a detention hearing. Of those charged with violent offenses, the offenders most likely to have a pretrial detention hearing were those charged with kidnapping, robbery, or murder. The least likely to have a pretrial detention hearing were those charged with sexual abuse and those charged with assault.

Once a defendant was ordered to have a detention hearing, the chances of being detained were less variable across offense categories (table 3.5). The highest rate of defendants ordered detained were those charged with public-order offenses (82%) - primarily immigration (89%) and weapons offenders (72%). Of the 69% of defendants charged with violent offenses and given a pretrial detention hearing, 74% were ordered detained. In 1999, 71% of those charged with drug offenses and 61% of those charged with property offenses were ordered detained following a pretrial hearing.

Violations (table 3.7) — Of defendants released prior to trial and terminating pretrial services during 1999, those charged with drug offenses were more likely (29%) than other defendants to incur at least one violation during the release period. Among major offense categories, those charged with property offenses were less likely (12%) than others to violate conditions of their release. Those charged with drug offenses and violent offenses were more likely to have their release revoked (10% of all released drug defendants, 12% of all released violent defendants). Only 4% of released public-order defendants were revoked, as were 5% of released property defendants.

Pretrial outcomes across demographic groups

Releases (table 3.2) — Females were more likely (73%) than males (42%) to be released during 1999 (figure 3.3). Males were more likely to have a financial condition imposed on them as females (20% versus 12%). Sixty-three percent of all defendants identified as non-Hispanic were released during 1999 compared to 23% of Hispanics. Non-Hispanic releasees were twice as likely to be released on personal recognizance as Hispanics.

The higher the education level of the defendant, the greater the probability of release. Forty percent of defendants with less than a high school education were released in 1999, while 80% of those who had

completed college were released. Releasees with a college degree were less likely to receive financial conditions (16%) and more likely to be released on personal recognizance (30%) than those who had less education.

Defendants with a history of drug abuse were released less frequently than those defendants with no known drug history (51% versus 60%). However, among all released defendants, drug abuse history does not appear to have had a major effect on the form of pretrial release.

Detentions (tables 3.4 and 3.6) — Males were more likely (72% versus 46%) than females to be detained (table 3.4). Of all detainees, 57% of the men and 43% of the women were detained following a detention hearing. Hispanics had a substantially higher probability of being detained (91%) as compared with non-Hispanics (54%). However, among those detained, Hispanics and non-Hispanics had nearly equal chances of being detained following a detention hearing (56% compared to 54%).

Younger defendants were more likely than older ones to be detained. Seventy-two percent of defendants between the ages of 16-18 and 72% of defendants in their twenties were detained, compared to 50% of those over 40. However, among all defendants detained, the chances of being detained following a detention hearing were similar across all age groups. These patterns were more dramatic with education levels. Those defendants with lower levels of education were more likely to be detained. Seventy-eight percent of those who did not graduate from high school were detained versus 33% of college graduates. Of those detained, 54% of defendants without a high school diploma were detained following a detention hearing compared to 48% of college graduates.

Not only were male defendants nearly twice as likely as female defendants to have a detention hearing (54% versus 33%), they were also more likely

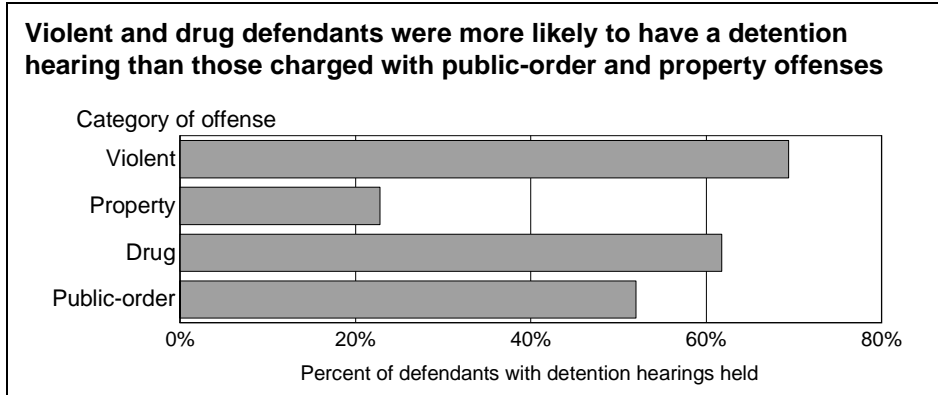


Figure 3.2. Detention hearings held, by offense category, October 1, 1998 - September 30, 1999

(76% versus 59%) to be ordered detained as a result of the hearing (table 3.6).

The likelihood of having a detention hearing increased with the number of prior convictions and severity of the defendant's criminal history. Furthermore, 55% of those with a history of drug abuse had detention hearings as compared to 43% of those without such a past. Those with a history of drug abuse were slightly more likely to be detained after a hearing.

Violations (table 3.9) — Released males were more likely than females to incur a violation during the pretrial release period (20% versus 14%) and were slightly more likely to have their release revoked. Native Americans

were more likely to incur at least one violation than were either blacks or whites (26% vs. 22% for black and 17% for whites), and to have their release revoked (17% vs. 8% for blacks and 6% for whites). Defendants with no prior criminal history were less likely to have a pretrial release violation than those with a prior conviction. Released defendants with a known drug history were nearly 3 times as likely to incur a violation than those with no known drug history. Also, those with a history of drug use were substantially more likely to have their release revoked (14% vs. 4%).

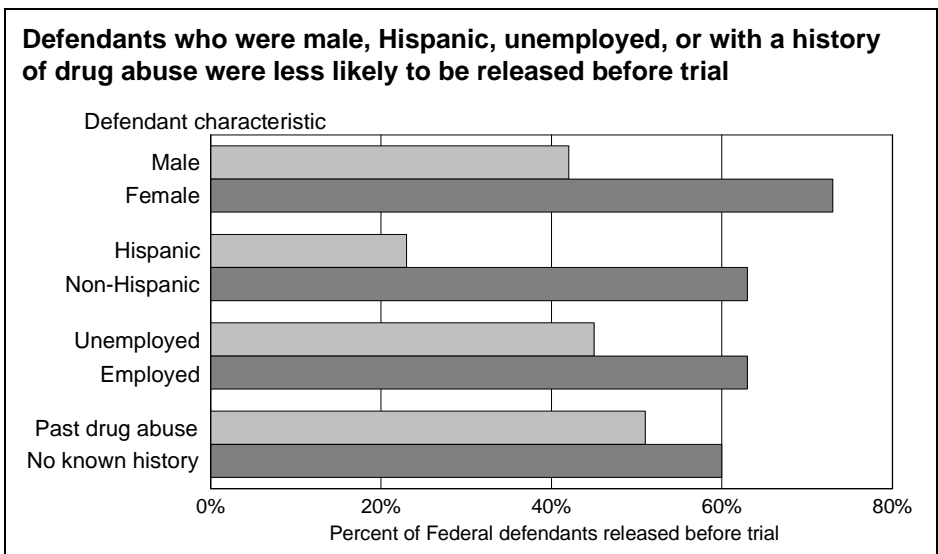


Figure 3.3. Pretrial release rates, by defendant characteristics, October 1, 1998 - September 30, 1999

Length of pretrial detention (table 3.10)

Among defendants detained for any time prior to case disposition, those charged with violent offenses were detained the longest (an average of 96.7 days) compared to drug (82.7 days), public-order (59.9 days), and property (43.1 days) defendants (not shown in a table).

Of defendants released, those released conditionally spent the greatest average number of days detained (71.4 days) compared to those released on personal recognizance (42.5 days), unsecured bond (34.5 days), or financial conditions (26.1 days). This trend varied only slightly across all major offense categories — in general, defendants released by conditional means were detained more days than defendants who were released by any other means.

Of defendants not released, those detained following a detention hearing were detained longer, on average, than those held on financial conditions (107.1 days compared with 83.9 days). This pattern was true across all major offense types.

Table 3.1. Type of pretrial release, by offense, October 1, 1998 - September 30, 1999

Most serious offense charged	Percent released	Of defendants released at any time prior to case disposition, percent released on—				Number of defendants	
		Financial ^a	Unsecured bond	Personal recognizance	Conditional release	Released	All defendants
All offenses^b	47.0%	17.8%	48.8%	27.8%	5.6%	30,841	65,559
Violent offenses	35.1%	10.6%	40.7%	43.6%	5.0%	1,212	3,453
Murder ^c	39.1	10.5	17.4	66.3	5.8	86	220
Negligent manslaughter	—	—	—	—	—	7	8
Assault	58.5	4.0	41.0	47.8	7.2	446	762
Robbery	24.0	18.2	48.6	29.6	3.6	500	2,081
Sexual abuse ^c	66.2	3.1	22.5	70.5	3.9	129	195
Kidnaping	25.9	18.4	47.4	31.6	2.6	38	147
Threats against the President	15.0	—	—	—	—	6	40
Property offenses	80.9%	9.3%	54.4%	31.8%	4.5%	11,201	13,850
Fraudulent	81.0%	10.2%	57.8%	29.7%	2.3%	8,754	10,808
Embezzlement	94.4	2.6	53.7	39.9	3.8	1,429	1,514
Fraud ^c	79.3	12.1	57.7	28.1	2.0	6,134	7,736
Forgery	80.8	5.8	66.0	25.2	2.9	206	255
Counterfeiting	75.6	10.2	62.1	25.9	1.8	985	1,303
Other	80.4%	6.0%	42.4%	39.0%	12.5%	2,447	3,042
Burglary	58.8	6.3	41.3	50.0	2.5	80	136
Larceny ^c	85.9	4.0	40.9	40.8	14.3	1,964	2,286
Motor vehicle theft	53.4	26.9	46.2	22.7	4.2	119	223
Arson and explosives	60.5	19.1	57.3	23.6	0	89	147
Transportation of stolen property	70.3	10.8	56.8	29.7	2.7	111	158
Other property offenses ^c	91.3	3.6	39.3	38.1	19.0	84	92
Drug offenses	40.9%	29.1%	47.9%	19.0%	4.1%	10,762	26,291
Trafficking	39.6	30.4	50.2	16.8	2.7	9,461	23,901
Other drug	54.4	19.6	31.5	34.7	14.1	1,301	2,390
Public-order offenses	34.5%	15.7%	43.4%	31.7%	9.2%	7,506	21,727
Regulatory	70.4%	16.3%	46.4%	33.0%	4.4%	1,678	2,382
Agriculture	93.7	8.4	53.8	33.6	4.2	119	127
Antitrust	100	0	14.3	85.7	0	28	28
Food and drug	95.1	12.8	41.0	38.5	7.7	39	41
Transportation	82.5	10.6	48.9	31.9	8.5	47	57
Civil rights	93.0	24.7	47.3	28.0	0	93	100
Communications	91.3	7.1	54.8	35.7	2.4	42	46
Custom laws	81.7	30.6	56.1	11.2	2.0	98	120
Postal laws	90.7	0.7	63.3	34.0	2.0	147	162
Other regulatory offenses	62.6	18.5	42.8	33.5	5.2	1,065	1,701
Other	30.1%	15.5%	42.6%	31.3%	10.7%	5,828	19,345
Weapons	45.6	14.9	53.2	28.7	3.2	1,225	2,687
Immigration offenses	9.7	33.0	41.0	18.3	7.7	1,150	11,859
Tax law violations ^c	95.7	5.3	53.7	37.8	3.3	641	670
Bribery	91.0	12.5	57.2	30.3	0	152	167
Perjury, contempt, and intimidation	72.4	10.4	53.2	32.9	3.5	173	239
National defense	65.4	11.8	35.3	41.2	11.8	34	52
Escape	15.2	18.5	35.9	39.1	6.5	92	604
Racketeering and extortion	56.4	32.0	49.2	16.6	2.3	482	855
Gambling	97.7	6.0	71.4	22.6	0	84	86
Liquor offenses	—	—	—	—	—	3	3
Nonviolent sex offenses	72.2	15.4	47.4	33.7	3.5	312	432
Obscene material ^c	79.0	14.3	53.1	30.6	2.0	49	62
Migratory birds	95.8	0	26.1	43.5	30.4	23	24
All other offenses ^c	87.7	2.5	22.1	45.1	30.3	1,408	1,605

Note: Released defendants include some defendants who were also detained prior to trial. Total also includes defendants for whom release status data were unavailable. Percentages in these tables are not directly comparable to those in the 1993 and prior compendia; see *Chapter notes*, items 1 and 2, p. 50.

—Too few cases to obtain statistically reliable data.

^aIncludes deposit bond, surety bond, and collateral bond.

^bIncludes 238 defendants for whom an offense category could not be determined, 160 of whom were released.

^cIn this table, "Murder" includes nonnegligent manslaughter; "Sexual abuse" includes only violent sex offenses; "Fraud" excludes tax fraud; "Larceny" excludes transportation of stolen property; "Other property offenses" excludes fraudulent property offenses, and includes destruction of property and trespassing; "Tax law violations" includes tax fraud; "Obscene material" denotes the mail or transport thereof; and "All other offenses" includes offenses with unclassifiable offense type.

Defendant characteristic	Percent released	Of defendants released at any time prior to case disposition, percent released on—				Number of defendants	
		Financial ^a	Unsecured bond	Personal recognizance	Conditional release	Released	All defendants
All defendants^b	47.0%	17.8%	48.8%	27.8%	5.6%	30,841	65,559
Male/female							
Male	42.0%	19.7%	47.7%	27.0%	5.6%	23,032	54,795
Female	72.5	12.1	52.1	30.2	5.7	7,754	10,689
Race							
White	44.5%	19.4%	48.1%	27.1%	5.5%	19,812	44,519
Black	52.5	15.6	54.1	25.1	5.2	8,970	17,098
Native American	64.0	2.4	19.9	67.6	10.0	787	1,229
Asian/Pacific Islander	46.6	20.1	37.4	37.4	5.1	904	1,939
Ethnicity							
Hispanic	22.7%	36.5%	43.3%	15.0%	5.2%	5,908	25,970
Non-Hispanic	63.1	13.5	50.9	30.7	4.8	24,312	38,541
Age							
16-18 years	51.4%	13.8%	43.2%	36.5%	6.5%	586	1,140
19-20 years	53.0	15.3	49.3	31.3	4.2	1,664	3,137
21-30 years	46.1	20.7	50.8	25.6	3.0	9,741	21,144
31-40 years	49.3	20.0	50.3	27.0	2.7	7,773	15,754
Over 40 years	65.6	16.0	51.8	29.4	2.9	8,660	13,210
Education							
Less than high school graduate	40.3%	23.9%	48.5%	24.0%	3.6%	7,955	19,756
High school graduate	60.9	16.7	50.0	28.4	5.0	9,796	16,098
Some college	71.7	16.0	52.8	28.2	3.0	7,288	10,165
College graduate	79.8	15.5	52.1	29.6	2.8	3,278	4,108
Marital status							
Never married	51.2%	16.9%	51.0%	28.1%	4.0%	10,425	20,381
Divorced/separated	59.0	17.5	51.3	27.3	3.9	5,675	9,611
Married	60.3	19.7	49.3	26.9	4.1	10,326	17,113
Common law	44.8	23.8	49.1	24.5	2.6	2,063	4,608
Other	17.0	8.8	30.2	34.7	26.3	2,352	13,846
Employment status at arrest							
Unemployed	44.8%	18.0%	51.3%	27.0%	3.8%	10,042	22,395
Employed	63.3	18.7	50.0	27.4	3.9	18,572	29,331
Criminal record							
No convictions ^c	59.1%	16.2%	47.4%	29.2%	7.3%	13,077	22,140
Misdemeanor only	59.5	16.2	50.1	28.6	5.0	6,141	10,328
Felony							
Nonviolent	31.9	20.6	50.6	25.0	3.9	4,529	14,219
Violent	25.2	21.2	47.1	26.8	4.9	2,407	9,568
Number of prior convictions							
1	48.9%	18.1%	51.0%	26.9%	4.1%	5,121	10,463
2 to 4	38.2	20.2	49.2	26.0	4.6	5,371	14,061
5 or more	27.0	16.4	48.4	29.5	5.6	2,585	9,591
Criminal justice status							
Not under supervision	57.1%	17.4%	48.8%	27.8%	5.9%	24,148	42,322
Pretrial release	54.4	22.6	50.0	24.8	2.6	1,458	2,681
Probation	41.0	20.0	50.4	26.8	2.8	1,451	3,541
Parole	17.6	17.6	54.8	23.3	4.3	301	1,710
Court appearance history							
No prior arrests	56.5%	16.2%	47.3%	29.2%	7.3%	13,260	23,477
Failure to appear							
None	44.0	19.6	50.9	25.4	4.1	14,664	33,329
1	34.9	17.2	44.7	33.4	4.7	1,561	4,470
More than 1	31.7	14.6	45.2	33.8	6.4	1,356	4,283
Drug abuse							
No known abuse	59.7%	18.4%	50.5%	27.0%	4.1%	19,623	32,861
Drug history	50.7	18.2	51.8	26.9	3.1	7,586	14,960

Note: Released defendants include some defendants who were also detained prior to trial. Total also includes defendants for whom release status data were unavailable. Percentages in these tables are not directly comparable to those in the 1993 and prior compendia; see *Chapter notes*, items 1 and 2, p. 50.

^aIncludes deposit bond, surety bond, and collateral bond.

^bIncludes defendants for whom characteristics could not be determined.

^cIncludes only those defendants whose PSA records explicitly showed no prior convictions.

Table 3.3. Form of pretrial detention, by offense, October 1, 1998 - September 30, 1999

Most serious offense charged	Of defendants detained at any time prior to case disposition, percent detained by—							Number of defendants	
	Percent detained	Temporary detention ^a	Held on bail for—		Court	Other detentions	Detained	All defendants	
			Part of pre-trial period	All of pre-trial period					
All offenses^b	68.1%	2.7%	18.8%	13.1%	55.1%	10.3%	44,626	65,559	
Violent offenses	80.5%	0.7%	14.7%	4.3%	64.2%	16.1%	2,778	3,453	
Murder ^c	79.1	0.6	10.3	1.1	78.2	9.8	174	220	
Negligent manslaughter	—	—	—	—	—	—	4	8	
Assault	61.7	0.6	24.3	9.1	53.6	12.3	470	762	
Robbery	88.8	0.8	11.4	3.7	66.9	17.2	1,847	2,081	
Sexual abuse ^c	57.4	0	35.7	0	54.5	9.8	112	195	
Kidnaping	90.5	0	13.5	3.0	59.4	24.1	133	147	
Threats against the President	95.0	2.6	7.9	5.3	50.0	34.2	38	40	
Property offenses	31.1%	1.2%	33.4%	8.1%	44.9%	12.4%	4,301	13,850	
Fraudulent	31.2%	1.3%	33.8%	7.6%	45.9%	11.4%	3,373	10,808	
Embezzlement	10.9	2.4	41.8	5.5	32.1	18.2	165	1,514	
Fraud ^c	33.5	1.2	33.2	7.0	46.9	11.7	2,588	7,736	
Forgery	28.2	0	30.6	8.3	38.9	22.2	72	255	
Counterfeiting	42.1	1.5	34.7	11.1	46.4	6.4	548	1,303	
Other	30.5%	0.9%	32.1%	9.6%	41.3%	16.2%	928	3,042	
Burglary	61.8	1.2	32.1	9.5	42.9	14.3	84	136	
Larceny ^c	23.2	0.6	35.8	10.2	39.4	14.0	530	2,286	
Motor vehicle theft	63.2	2.1	19.1	5.0	49.6	24.1	141	223	
Arson and explosives	58.5	1.2	29.1	9.3	41.9	18.6	86	147	
Transportation of stolen property	43.7	0	24.6	14.5	42.0	18.8	69	158	
Other property offenses ^c	19.6	0	66.7	11.1	16.7	5.6	18	92	
Drug offenses	80.7%	2.0%	22.5%	12.3%	54.2%	9.1%	21,221	26,291	
Trafficking	82.8	1.8	22.6	12.6	54.1	9.0	19,784	23,901	
Other drug offenses	60.1	5.1	21.3	7.3	55.0	11.2	1,437	2,390	
Public-order offenses	74.7%	4.4%	11.0%	17.1%	57.4%	10.2%	16,221	21,727	
Regulatory	44.1%	1.0%	30.3%	9.7%	43.0%	16.1%	1,050	2,382	
Agriculture	13.4	0	35.3	5.9	35.3	23.5	17	127	
Antitrust	46.4	0	100	0	0	0	13	28	
Food and drug	14.6	—	—	—	—	—	6	41	
Transportation	29.8	0	41.2	11.8	47.1	0	17	57	
Civil rights	13.0	0	38.5	0	30.8	30.8	13	100	
Communications	15.2	—	—	—	—	—	7	46	
Custom laws	49.2	0	55.9	20.3	22.0	1.7	59	120	
Postal laws	11.1	0	16.7	0	50.0	33.3	18	162	
Other regulatory offenses	52.9	1.1	27.2	9.6	45.1	17.0	900	1,701	
Other	78.4%	4.6%	9.6%	17.6%	58.4%	9.8%	15,171	19,345	
Weapons	70.7	2.4	18.7	4.2	57.4	17.3	1,900	2,687	
Immigration offenses	96.5	5.6	6.1	22.1	58.8	7.5	11,440	11,859	
Tax law violations ^c	11.0	0	56.8	2.7	27.0	13.5	74	670	
Bribery	19.8	6.1	48.5	12.1	33.3	0	33	167	
Perjury, contempt, and intimidation	44.4	0.9	27.4	2.8	51.9	17.0	106	239	
National defense	44.2	0	17.4	8.7	73.9	0	23	52	
Escape	91.1	0.7	5.6	1.1	71.1	21.5	550	604	
Racketeering and extortion	61.6	0.6	22.8	2.7	59.6	14.4	527	855	
Gambling	10.5	—	—	—	—	—	9	86	
Liquor offenses	—	0	3	
Nonviolent sex offenses	46.8	0.5	32.7	3.5	53.5	9.9	202	432	
Obscene material ^c	35.5	0	27.3	4.5	54.5	13.6	22	62	
Migratory birds	8.3	—	—	—	—	—	2	24	
All other offenses ^c	17.6	1.8	30.7	5.3	40.6	21.6	283	1,605	

Note: Detained defendants include some defendants who were also released prior to trial. Total also includes defendants for whom release status data were unavailable. Percentages in this table are not directly comparable to those in the 1993 and prior compendia; see *Chapter notes*, items 1 and 2, p. 50.

—Too few cases to obtain statistically reliable data.
 ...No case of this type occurred in the data.

^aHeld under 18 U.S.C. § 3142 pending deportation, action on prior pretrial release, or probation or parole review.

^bIncludes 238 defendants for whom offense category could not be determined, 105 of whom were detained.
^cIn this table, "Murder" includes nonnegligent manslaughter; "Sexual abuse" includes only violent sex offenses; "Fraud" excludes tax fraud; "Larceny" excludes transportation of stolen property; "Other property offenses" excludes fraudulent property offenses, and includes destruction of property and trespassing; "Tax law violations" includes tax fraud; "Obscene material" denotes the mail or transport thereof; and "All other offenses" includes offenses with unclassifiable offense type.

Table 3.4. Form of pretrial detention, by defendant characteristics, October 1, 1998 - September 30, 1999

Defendant characteristic	Of defendants detained at any time prior to case disposition, percent detained by—						Number of defendants	
	Percent detained	Temporary detention ^a	Held on bail for—		Court	Other detentions	Detained	All defendants
			Part of pre- trial period	All of pre- trial period				
All defendants^b	68.1%	2.7%	18.8%	13.1%	55.1%	10.3%	44,626	65,559
Male/female								
Male	72.4%	2.8%	16.8%	13.2%	56.6%	10.5%	39,691	54,795
Female	45.9	1.5	35.5	12.1	42.7	8.2	4,908	10,689
Race								
White	69.9%	3.0%	17.7%	16.5%	54.1%	8.8%	31,097	44,519
Black	64.0	1.6	21.3	5.8	58.3	13.0	10,949	17,098
Native American	62.1	0.3	32.8	1.2	54.1	11.7	763	1,229
Asian/Pacific Islander	68.7	1.1	19.1	3.5	58.4	18.0	1,332	1,939
Ethnicity								
Hispanic	90.6%	4.3%	13.0%	19.6%	56.3%	6.9%	23,516	25,970
Non-Hispanic	53.5	1.0	25.6	5.8	54.3	13.3	20,610	38,541
Age								
16-18 years	71.7%	1.8%	27.9%	10.9%	52.0%	7.3%	817	1,140
19-20 years	68.6	2.9	27.4	11.7	50.2	7.8	2,152	3,137
21-30 years	71.5	3.4	20.6	11.1	54.4	10.4	15,117	21,144
31-40 years	67.7	3.2	20.9	11.4	53.9	10.6	10,661	15,754
Over 40 years	50.4	2.0	27.0	9.8	49.9	11.2	6,663	13,210
Education								
Less than high school graduate	78.4%	4.7%	19.9%	10.9%	53.8%	10.7%	15,486	19,756
High school graduate	58.1	1.6	27.5	6.6	52.8	11.5	9,348	16,098
Some college	47.1	1.3	34.2	6.9	47.8	9.8	4,784	10,165
College graduate	33.4	1.2	33.8	6.6	48.1	10.4	1,371	4,108
Marital status								
Never married	68.0%	2.2%	23.5%	7.6%	55.4%	11.3%	13,853	20,381
Divorced/separated	59.7	2.4	26.1	9.2	50.4	11.9	5,740	9,611
Married	55.5	4.2	24.6	9.7	51.8	9.6	9,505	17,113
Common law	74.9	3.8	22.2	11.4	53.3	9.2	3,451	4,608
Other	87.2	1.9	4.5	24.4	60.0	9.2	12,077	13,846
Employment status at arrest								
Unemployed	73.3%	2.9%	20.4%	7.8%	54.7%	14.1%	16,422	22,395
Employed	54.5	3.1	28.2	9.9	50.9	7.9	15,992	29,331
Criminal record								
No convictions ^c	55.5%	2.5%	23.4%	15.0%	51.5%	7.6%	12,285	22,140
Misdemeanor only	60.6	2.2	28.2	13.4	47.4	8.9	6,256	10,328
Felony								
Nonviolent	80.9	3.3	12.7	14.0	57.9	12.1	11,506	14,219
Violent	87.0	2.5	10.5	10.5	62.0	14.5	8,327	9,568
Number of prior convictions								
1	67.6%	2.8%	21.0%	13.5%	53.0%	9.7%	7,078	10,463
2 to 4	77.1	3.1	16.3	12.7	56.4	11.5	10,843	14,061
5 or more	85.2	2.3	10.4	12.1	60.2	15.0	8,168	9,591
Criminal justice status								
Not under supervision	59.3%	2.1%	24.2%	14.2%	51.0%	8.5%	25,117	42,322
Pretrial release	67.5	1.8	25.6	6.3	57.8	8.5	1,810	2,681
Probation	76.1	4.8	18.4	13.8	53.3	9.6	2,696	3,541
Parole	90.6	6.0	7.0	19.5	56.9	10.7	1,549	1,710
Court appearance history								
No prior arrests	57.6%	2.9%	21.8%	14.3%	53.6%	7.4%	13,519	23,477
Failure to appear								
None	71.7	3.0	18.5	12.9	54.2	11.4	23,892	33,329
1	80.5	1.6	15.5	11.9	57.6	13.4	3,600	4,470
More than 1	84.4	1.1	13.4	10.9	63.7	11.0	3,615	4,283
Drug abuse								
No known abuse	57.0%	3.4%	25.4%	10.3%	50.8%	10.0%	18,727	32,861
Drug history	70.3	2.0	24.4	6.3	55.2	12.0	10,510	14,960

Note: Detained defendants include defendants who were also released prior to trial. Total also includes defendants for whom release status data were unavailable. Percentages in this table are not directly comparable to those in the 1993 and prior compendia; see *Chapter notes*, items 1 and 2, p. 50.

^aHeld under 18 U.S.C. § 3142 pending deportation, action on prior pretrial release, or probation or parole review.

^bIncludes defendants for whom these characteristics could not be determined.

^cIncludes only those defendants whose PSA records explicitly showed no prior convictions.

Table 3.5. Pretrial detention hearing outcomes, by offense, October 1, 1998- September 30, 1999

Most serious offense charged	All defendants	Defendants with pretrial detention hearings			
		Number of defendants		Percent of defendants with hearings held	Of defendants with hearings held, percent ordered detained
		Hearings held	Ordered detained		
All offenses^a	65,559	33,188	24,561	50.6%	74.0%
Violent offenses	3,453	2,398	1,783	69.4%	74.4%
Murder ^b	220	163	136	74.1	83.4
Negligent manslaughter	8	4	1	—	—
Assault	762	387	252	50.8	65.1
Robbery	2,081	1,601	1,235	76.9	77.1
Sexual abuse ^b	195	104	61	53.3	58.7
Kidnaping	147	107	79	72.8	73.8
Threats against the President	40	32	19	80.0	59.4
Property offenses	13,850	3,157	1,927	22.8%	61.0%
Fraudulent	10,808	2,500	1,544	23.1%	61.8%
Embezzlement	1,514	107	53	7.1	49.5
Fraud ^b	7,736	1,953	1,210	25.2	62.0
Forgery	255	48	28	18.8	58.3
Counterfeiting	1,303	392	253	30.1	64.5
Other	3,042	657	383	21.6%	58.3%
Burglary	136	69	36	50.7	52.2
Larceny ^b	2,286	350	209	15.3	59.7
Motor vehicle theft	223	106	70	47.5	66.0
Arson and explosives	147	69	36	46.9	52.2
Transportation of stolen property	158	51	29	32.3	56.9
Other property offenses ^b	92	12	3	13.0	25.0
Drug offenses	26,291	16,251	11,482	61.8%	70.7%
Trafficking	23,901	15,086	10,692	63.1	70.9
Other drug	2,390	1,165	790	48.7	67.8
Public-order offenses	21,727	11,296	9,308	52.0%	82.4%
Regulatory	2,382	741	452	31.1%	61.0%
Agriculture	127	12	6	9.4	50.0
Antitrust	28	13	0	46.4	0
Food and drug	41	4	1	9.8	—
Transportation	57	12	8	21.1	66.7
Civil rights	100	13	4	13.0	30.8
Communications	46	6	4	13.0	—
Custom laws	120	31	13	25.8	41.9
Postal laws	162	14	9	8.6	64.3
Other regulatory offenses	1,701	636	407	37.4	64.0
Other	19,345	10,555	8,856	54.6%	83.9%
Weapons	2,687	1,525	1,091	56.8	71.5
Immigration offenses	11,859	7,544	6,722	63.6	89.1
Tax law violations ^b	670	47	20	7.0	42.6
Bribery	167	26	11	15.6	42.3
Perjury, contempt, and intimidation	239	90	55	37.7	61.1
National defense	52	22	17	42.3	77.3
Escape	604	467	391	77.3	83.7
Racketeering and extortion	855	424	313	49.6	73.8
Gambling	86	5	1	5.8	—
Liquor offenses	3	0	0	—	...
Nonviolent sex offenses	432	171	108	39.6	63.2
Obscene material ^b	62	18	12	29.0	66.7
Migratory birds	24	2	1	8.3	—
All other offenses ^b	1,605	214	114	13.3	53.3

Note: Defendants may also be detained for failure to meet bail conditions, or temporarily detained pending action of other agencies. Percentages in this table are not directly comparable to those in the 1993 and prior compendia; see *Chapter notes*, items 1 and 2, p. 50.

—Too few cases to obtain statistically reliable data.

...No case of this type occurred in the data.

^aIncludes 238 defendants for whom offense category could not be determined, 86 of whom had pretrial detention hearings.

^bIn this table, "Murder" includes nonnegligent manslaughter; "Sexual abuse" includes only violent sex offenses; "Fraud" excludes tax fraud; "Larceny" excludes transportation of stolen property; "Other property offenses" excludes fraudulent property offenses, and includes destruction of property and trespassing; "Tax law violations" includes tax fraud; "Obscene material" denotes the mail or transport thereof; and "All other offenses" includes offenses with unclassifiable offense type.

Table 3.6. Pretrial detention hearing outcomes, by defendant characteristics, October 1, 1998 - September 30, 1999

Defendant characteristic	All defendants	Defendants with pretrial detention hearings			
		Number of defendants held	Ordered detained	Percent of defendants with hearings held	Of defendants with hearings held, percent ordered detained
All defendants^a	65,559	33,188	24,561	50.6%	74.0%
Male/female					
Male	54,795	29,649	22,458	54.1%	75.7%
Female	10,689	3,518	2,087	32.9	59.3
Race					
White	44,519	22,179	16,792	49.8%	75.7%
Black	17,098	8,948	6,382	52.3	71.3
Native American	1,229	713	413	58.0	57.9
Asian/Pacific Islander	1,939	1,032	778	53.2	75.4
Ethnicity					
Hispanic	25,970	16,265	13,230	62.6%	81.3%
Non-Hispanic	38,541	16,697	11,185	43.3	67.0
Age					
16-18 years	1,140	613	424	53.8%	69.2%
19-20 years	3,137	1,575	1,079	50.2	68.5
21-30 years	21,144	11,422	8,213	54.0	71.9
31-40 years	15,754	8,084	5,736	51.3	71.0
Over 40 years	13,210	5,125	3,326	38.8	64.9
Education					
Less than high school graduate	19,756	11,511	8,331	58.3%	72.4%
High school graduate	16,098	7,415	4,938	46.1	66.6
Some college	10,165	3,768	2,284	37.1	60.6
College graduate	4,108	1,084	656	26.4	60.5
Marital status					
Never married	20,381	10,877	7,670	53.4%	70.5%
Divorced/separated	9,611	4,348	2,891	45.2	66.5
Married	17,113	7,171	4,919	41.9	68.6
Common law	4,608	2,619	1,840	56.8	70.3
Other	13,846	8,173	7,241	59.0	88.6
Employment status at arrest					
Unemployed	22,395	12,563	8,977	56.1%	71.5%
Employed	29,331	12,309	8,140	42.0	66.1
Criminal record					
No convictions ^b	22,140	8,915	6,320	40.3%	70.9%
Misdemeanor only	10,328	4,595	2,961	44.5	64.4
Felony					
Nonviolent	14,219	8,453	6,659	59.4	78.8
Violent	9,568	6,439	5,157	67.3	80.1
Number of prior convictions					
1	10,463	5,214	3,747	49.8%	71.9%
2 to 4	14,061	8,078	6,116	57.4	75.7
5 or more	9,591	6,195	4,914	64.6	79.3
Criminal justice status					
Not under supervision	42,322	18,443	12,799	43.6%	69.4%
Pretrial release	2,681	1,483	1,046	55.3	70.5
Probation	3,541	1,939	1,436	54.8	74.1
Parole	1,710	1,032	881	60.4	85.4
Court appearance history					
No prior arrests	23,477	9,919	7,242	42.2%	73.0%
Failure to appear					
None	33,329	17,628	12,945	52.9	73.4
1	4,470	2,759	2,075	61.7	75.2
More than 1	4,283	2,882	2,299	67.3	79.8
Drug abuse					
No known abuse	32,861	14,025	9,507	42.7%	67.8%
Drug history	14,960	8,281	5,792	55.4	69.9

Note: Percentages in this table are not directly comparable to those in the 1993 and prior compendia; see *Chapter notes*, items 1 and 2, p. 50.

^aIncludes defendants for whom these characteristics are unknown.

^bIncludes only those defendants whose PSA records explicitly showed no prior convictions.

Table 3.7. Behavior of defendants released prior to trial, by offense, October 1, 1998 - September 30, 1999

Most serious offense charged	Percent of released defendants who had—							Number of released defendants
	Violations while on release					Technical violations of bail conditions	Release revoked	
	No violation	At least one violation	Failed to appear	New offense charged				
			Felony	Misdemeanor				
All offenses*	81.7%	18.3%	2.7%	1.8%	1.6%	16.6%	6.7%	30,841
Violent offenses	76.7%	23.3%	2.3%	2.0%	2.6%	21.4%	11.9%	1,212
Property offenses	88.1%	11.9%	1.8%	1.5%	1.1%	10.5%	4.6%	11,201
Fraudulent offenses	88.5	11.5	1.8	1.5	1.1	10.1	4.4	8,754
Other property offenses	86.5	13.5	1.9	1.6	1.3	12.1	5.2	2,447
Drug offenses	71.5%	28.5%	4.0%	2.4%	2.3%	26.3%	10.0%	10,762
Public-order offenses	87.5%	12.5%	2.1%	1.2%	1.3%	11.2%	4.2%	7,506
Regulatory offenses	91.4	8.6	1.7	0.5	0.8	7.7	2.1	1,678
Other public-order offenses	86.4	13.6	2.2	1.4	1.4	12.1	4.8	5,828

Note: Data describe defendants whose pretrial services were terminated during fiscal year 1999. A defendant with more than one type of violation appears in more than one column. A defendant with more than one of the same type of violation appears only once in that column. Therefore, the sum of individual violations exceeds the total. Not all violations resulted in revocation. For further information, see *Chapter notes*, item 1, p. 50.

*Includes 160 defendants for whom offense category could not be determined.

Table 3.8. Behavior of defendants released prior to trial, by type of release, October 1, 1998 - September 30, 1999

Type of release	Percent of released defendants who had—							Number of released defendants
	Violations while on release					Technical violations of bail conditions	Release revoked	
	No violation	At least one violation	Failed to appear	New offense charged				
			Felony	Misdemeanor				
All releases	81.7%	18.3%	2.7%	1.8%	1.6%	16.6%	6.7%	30,841
Financial release	75.4%	24.6%	5.6%	2.6%	1.8%	21.6%	6.4%	5,485
Deposit bond	73.6	26.4	7.5	2.7	2.3	22.3	6.6	2,600
Collateral bond	78.3	21.7	3.1	2.5	1.3	19.7	5.0	1,606
Corporate surety	75.1	24.9	4.9	2.5	1.5	22.4	7.8	1,279
Unsecured bond	81.9%	18.1%	1.9%	1.2%	1.8%	17.2%	7.5%	8,581
Personal recognizance	82.2%	17.8%	2.3%	2.0%	1.6%	16.0%	6.9%	15,048
Conditional release	95.9%	4.1%	1.0%	0.2%	0.5%	3.6%	1.7%	1,727

Note: Data describe defendants whose pretrial services were terminated during fiscal year 1999. A defendant with more than one type of violation appears in more than one column. A defendant with more than one of the same type of violation appears only once in that column. Therefore, the sum of individual violations exceeds the total. Not all violations resulted in revocation. For further information, see *Chapter notes*, item 1, p. 50.

Table 3.9. Behavior of defendants released prior to trial, by defendant characteristics, October 1, 1998 - September 30, 1999

Defendant characteristic	Percent of released defendants who had—						Release revoked	Number of released defendants
	Violations while on release			New offense charged		Technical violations of bail conditions		
	No violation	At least one violation	Failed to appear	Felony	Misdemeanor			
All defendants^a	81.7%	18.3%	2.7%	1.8%	1.6%	16.6%	6.7%	30,841
Male/female								
Male	80.2%	19.8%	2.9%	1.9%	1.8%	17.9%	7.3%	23,032
Female	86.0	14.0	2.2	1.2	1.0	12.8	4.9	7,754
Race								
White	83.3%	16.7%	2.8%	1.6%	1.4%	15.1%	5.7%	19,812
Black	77.9	22.1	2.5	2.3	2.0	20.2	8.2	8,970
Native American	74.0	26.0	2.2	0.9	4.4	24.7	16.8	787
Asian/Pacific Islander	87.5	12.5	1.5	0.8	0.8	11.7	5.5	904
Ethnicity								
Hispanic	79.8%	20.2%	5.8%	1.6%	1.3%	17.7%	5.2%	5,908
Non-Hispanic	81.9	18.1	2.0	1.8	1.8	16.6	7.1	24,312
Age								
16-18 years	72.5%	27.5%	4.1%	3.2%	2.9%	24.6%	12.1%	586
19-20 years	72.5	27.5	3.7	2.8	2.4	24.9	11.3	1,664
21-30 years	76.7	23.3	3.1	2.2	2.5	21.4	8.5	9,741
31-40 years	80.6	19.4	2.9	1.9	1.4	17.7	7.1	7,773
Over 40 years	87.9	12.1	1.9	1.0	0.9	10.9	4.1	8,660
Education								
Less than high school graduate	74.0%	26.0%	4.5%	2.6%	2.4%	23.5%	9.9%	7,955
High school graduate	80.5	19.5	2.1	1.8	1.9	17.8	7.1	9,796
Some college	84.4	15.6	1.9	1.3	1.2	14.4	5.4	7,288
College graduate	91.2	8.8	1.3	1.1	0.5	8.0	3.2	3,278
Marital status								
Never married	75.3%	24.7%	3.1%	2.2%	2.3%	22.6%	9.5%	10,425
Divorced/separated	79.7	20.3	2.7	1.9	1.7	18.5	7.7	5,675
Married	88.1	11.9	2.1	1.2	1.0	10.6	3.7	10,326
Common law	75.6	24.4	3.6	2.8	2.2	22.1	8.4	2,063
Other	91.5	8.5	2.2	1.1	0.7	7.2	3.2	2,352
Employment status at arrest								
Unemployed	75.2%	24.8%	3.6%	2.3%	2.2%	22.7%	10.5%	10,042
Employed	84.1	15.9	2.2	1.5	1.4	14.4	5.0	18,572
Criminal record								
No convictions ^b	90.3%	9.7%	2.1%	0.8%	0.7%	8.6%	2.6%	13,077
Misdemeanor only	76.5	23.5	2.8	2.0	2.3	21.7	9.6	6,141
Felony								
Nonviolent	73.9	26.1	3.5	2.8	2.3	23.7	10.7	4,529
Violent	67.4	32.6	3.6	3.9	3.1	29.9	13.1	2,407
Number of prior convictions								
1	79.3%	20.7%	2.7%	2.3%	1.6%	18.7%	7.5%	5,121
2 to 4	72.9	27.1	3.3	2.6	2.5	25.0	11.3	5,371
5 or more	65.6	34.4	4.0	3.3	4.1	31.8	15.4	2,585
Criminal justice status								
Not under supervision	84.8%	15.2%	2.4%	1.3%	1.3%	13.7%	5.0%	24,148
Pretrial release	68.6	31.4	2.9	3.9	3.2	28.8	13.6	1,458
Probation	70.2	29.8	3.3	3.2	3.1	27.7	13.2	1,451
Parole	72.4	27.6	4.7	4.7	2.7	23.9	10.3	301
Court appearance history								
No prior arrests	90.2%	9.8%	2.1%	0.8%	0.7%	8.6%	2.7%	13,260
Failure to appear								
None	77.0	23.0	3.0	2.2	2.2	20.9	8.7	14,664
1	69.3	30.7	3.7	3.5	2.8	28.4	12.7	1,561
More than 1	62.2	37.8	3.7	4.3	3.3	35.3	17.3	1,356
Drug abuse								
No known abuse	87.5%	12.5%	2.2%	1.5%	1.3%	10.9%	4.2%	19,623
Drug history	64.5	35.5	3.8	2.7	2.8	33.5	14.0	7,586

Note: Data describe defendants whose pretrial services were terminated during fiscal year 1999. A defendant with more than one type of violation appears in more than one column. A defendant with more than one of the same type of violation appears only once in that column. Therefore, the sum of individual violations exceeds the total. Not all violations resulted in revocation. For further information, see *Chapter notes*, item 1, p. 50.

^aIncludes defendants for whom these characteristics could not be determined.

^bIncludes only those defendants whose PSA records explicitly showed no prior convictions.

Table 3.10. Length of pretrial detention, by form of release or detention, and most serious offense charged, October 1, 1998 - September 30, 1999

Most serious offense charged	Among defendants detained for any time prior to case disposition, the average number of days detained ^a					
	Released on—				Not released	
	Financial conditions	Unsecured bond ^b	Personal recognizance	Conditional release	Financial condition	Detained by court
All offenses	26.1 days	34.5 days	42.5 days	71.4 days	83.9 days	107.1 days
Violent offenses	23.3 days	39.4 days	39.5 days	85.6 days	104.2 days	137.9 days
Murder ^c	—	73.8	61.5	—	—	220.2
Negligent manslaughter	...	—	—	—
Assault	16.6	38.3	34.1	108.4	102.3	133.2
Robbery	23.1	36.5	33.4	99.3	102.2	125.6
Sexual abuse ^c	—	27.1	28.7	—	...	106.2
Kidnaping	—	26.2	69.6	—	—	231.9
Threats against the President	...	—	—	...	—	179.6
Property offenses	26.6 days	33.1 days	37.1 days	110.2 days	89.0 days	89.4 days
Fraudulent	25.9 days	31.3 days	36.9 days	140.7 days	103.1 days	85.3 days
Embezzlement	38.7	44.0	23.0	135.0	—	85.6
Fraud ^c	26.4	32.6	40.8	188.8	128.3	85.5
Forgery	31.3	11.5	65.5	...	—	69.2
Counterfeiting	18.2	28.1	29.9	38.2	54.4	86.1
Other	30.3 days	39.9 days	37.5 days	52.2 days	45.1 days	106.9 days
Burglary	—	54.7	66.2	...	—	72.5
Larceny ^c	34.4	37.2	32.7	63.9	50.4	74.2
Motor vehicle theft	28.1	33.3	38.9	—	—	192.7
Arson and explosives	3.4	86.5	35.0	...	—	183.4
Transportation of stolen property	45.4	8.2	41.3	—	—	52.8
Other property offenses ^c	—	3.0	29.3	—
Drug offenses	27.4 days	35.9 days	48.3 days	70.4 days	93.3 days	127.1 days
Trafficking	28.0	36.3	49.7	71.5	95.2	128.4
Other drug offenses	21.3	29.1	23.3	52.4	64.2	110.6
Public-order offenses	21.7 days	30.0 days	37.3 days	61.5 days	73.6 days	77.6 days
Regulatory	21.5 days	29.5 days	18.9 days	72.2 days	66.8 days	73.5 days
Other	21.8 days	30.1 days	40.2 days	58.7 days	73.9 days	77.8 days
Weapons	28.1	35.3	63.8	113.2	88.0	110.0
Immigration offenses	18.2	20.2	18.6	51.9	70.1	67.0
Tax law violations ^c	22.1	24.5	2.5	...	—	84.5
Bribery	4.3	91.0	—
Perjury, contempt, and intimidation	42.1	41.8	24.5	—	—	113.6
National defense	...	16.5	13.0	119.9
Escape	37.7	49.7	25.7	—	—	64.2
Racketeering and extortion	27.8	56.7	97.4	108.3	52.3	188.4
Gambling	—	15.5	2.0	—
Liquor offenses
Nonviolent sex offenses	14.1	16.3	38.8	4.0	—	106.5
Obscene material ^c	—	23.7	9.0	—
Migratory birds	—
All other offenses ^c	7.8	20.7	15.3	52.5	—	46.8

—Too few cases to obtain statistically reliable data.

...No case of this type occurred in the data.

^aData describe 65,559 defendants who terminated pretrial services during fiscal year 1999. Data exclude defendants for whom periods of detention could not be determined or were unavailable. For further information, see *Chapter notes*, item 1, p. 50.

^bIncludes deposit bond, surety bond, and collateral bond.

^cIn this table, "Murder" includes nonnegligent manslaughter; "Sexual abuse" includes only violent sex offenses; "Fraud" excludes tax fraud; "Larceny" excludes transportation of stolen property; "Other property offenses" excludes fraudulent property offenses, and includes destruction of property and trespassing; "Tax law violations" includes tax fraud; "Obscene material" denotes the mail or transport thereof; and "All other offenses" includes offenses with unclassifiable offense type.

Chapter notes

1) All tables in chapter 3 were created from data in the Pretrial Services Information Act System data base, which is maintained by the Pretrial Services Agency (PSA) within the AOUSC. The data describe 65,559 defendants who terminated pretrial services during October 1, 1998, through September 30, 1999, and whose cases were filed by complaint, indictment, or information. In these tables, the totals (e.g., "all offenses") included records whose offense or other attributes were missing or indeterminable. The percentage distributions were based on nonmissing values, and missing values were reported in a separate row or in a footnote.

Offenses in the PSA are based on the most serious charged offense, as determined by the probation officer responsible for the interview with the defendant. The probation officer classifies the major offense charged into AOUSC four-digit offense codes. For defendants charged with more than one offense on an indictment, the probation officer chooses as the major charged offense the one carrying the most severe penalty or, in the case of two or more charges carrying the same penalty, the one with the highest offense severity. The offense severity level is determined by the AOUSC, which ranks offenses according to the maximum sentence, type of crime, and maximum fine amount. These four-digit codes are then aggregated into the same offense categories as those used in chapter 1.

For drug offenses, the type of drug activity — trafficking or possession — is obtained by the probation officers from their reading of the indictment or other charging documents. The AOUSC citation manual provides probation officers with detailed instructions on how to code drug crimes.

2) In tables 3.1-3.4, the percentages showing the methods of release or methods of detention were based on the number of defendants

released or the number of defendants detained. In tables 3.5 and 3.6, the percentages were based on the number of defendants who had hearings and were ordered detained. This method departs from the 1993 and prior compendia, in which the percentages were based on the number of defendants terminating pretrial services.