



Bureau of Justice Statistics

Compendium of Federal Justice Statistics, 1994

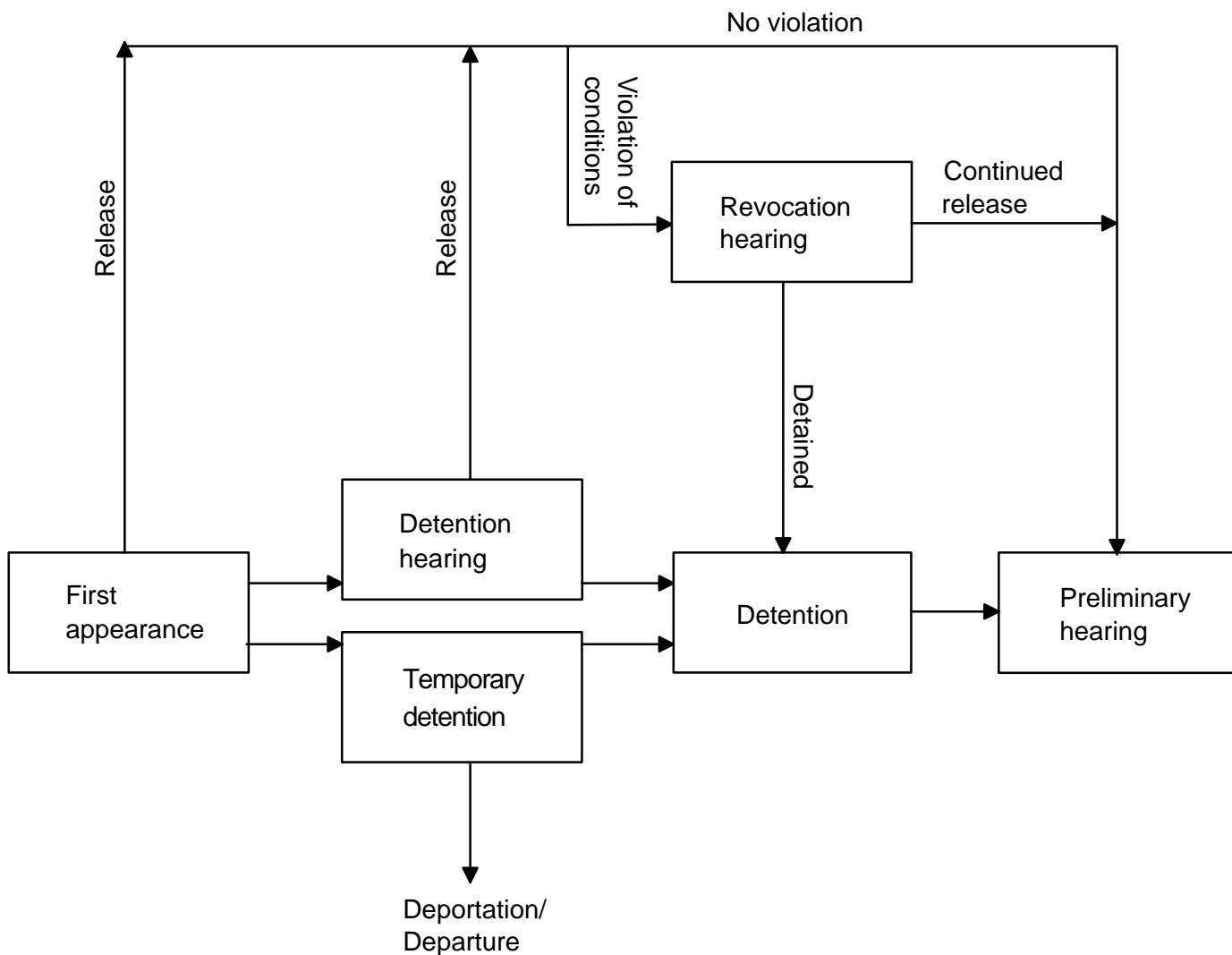
Federal criminal case processing, 1994



Discussion 23**Tables***October 1, 1993–September 30, 1994*

2.1	Type of pretrial release, by offense	27
2.2	Type of pretrial release, by defendant characteristics	28
2.3	Form of pretrial detention, by offense	29
2.4	Form of pretrial detention, by defendant characteristics	30
2.5	Pretrial detention hearing outcomes, by offense	31
2.6	Pretrial detention hearing outcomes, by defendant characteristics	32
2.7	Behavior of defendants released prior to trial, by offense	33
2.8	Behavior of defendants released prior to trial, by type of release	33
2.9	Behavior of defendants released prior to trial, by defendant characteristics	34
2.10	Length of pretrial detention, by form of release or detention, and most serious offense charged	35

Chapter notes 36



The Bail Reform Act of 1984 (18 U.S.C. § 3141) sets the terms for release and detention of defendants facing charges in Federal courts. At the time defendants first appear before a judicial officer, they may be (1) released on personal recognizance or unsecured bond; (2) released subject to conditions imposed by the court, possibly including traditional bail; (3) temporarily detained without bail (limited to 10 working days) to permit deportation, exclusion, or the revocation of previously granted conditional release; or (4) detained without bail after a hearing.¹

Federal defendants may be detained without bail if charged with specified categories of offenses, or if it is determined at a special hearing that no financial or other conditions will reasonably assure the required appearance of the person and/or guarantee the safety of any other person in the community. Defendants not detained under these criteria must be released, either on personal recognizance, unsecured bond, or such conditions as are necessary to assure their appearance at trial and the public safety.² The law explicitly states that the court may not impose a financial condition that results in the pretrial detention of the person.

According to statute, a defendant must be brought before a judicial officer without “unnecessary delay” upon arrest. The judicial officer, who may be a judge but is generally a U.S. magistrate, determines whether the defendant will be released or detained prior to trial. If a hearing is required, the release decision may be delayed no more than 3 days (or 5 days if the defendant requests).

Release procedures

Defendants may be released at any time before trial. Some defendants, therefore, are detained for a time and then released before trial. This generally occurs when an appeal results in a lowering of bail conditions or the

defendant requires additional time to arrange compliance with the originally set terms of release. Defendants who have been detained prior to their release are included in tabulations of both defendants detained and defendants released.

Types of pretrial release

Defendants may be released without financial conditions according to the following:

Personal recognizance — defendant is released subject to no financial or other conditions.

Unsecured bond — no money is required to be posted before release, but defendant is liable for full bail amount if he or she fails to appear.

Conditional release — any combination of restrictions that are deemed necessary to guarantee the defendant's appearance at trial or the safety of the community. Non-financial conditions commonly place restrictions on the defendant's movements, associations, and/or actions. They may also involve employment, education, or treatment for medical, psychological, or substance abuse conditions.

Defendants may also be released on financial conditions. Financial conditions include: (1) deposit bond (the defendant is required to post a percentage of the total bail amount, usually 10%), (2) surety bond (the defendant is released subject to guarantees by a third person that the full amount will be paid), or (3) a collateral bond (collateral equal to the full bail amount is required to be posted by the defendant prior to release). Financial conditions may occur in combination with non-financial conditions.

Factors relating to release or detention

In deciding whether to release a defendant and in setting release conditions, the court is directed to consider the nature and circumstances of the offense charged, the weight of evidence against the defendant, the defendant's character, physical and

mental condition, family ties, employment, financial resources, length of residence in the community, community ties, past conduct, history relating to drug or alcohol abuse, criminal history, and record concerning appearance at court proceedings.

During 1994, 27,607 defendants were released prior to trial (table 2.1). Those defendants released made up nearly 61% of 45,584 defendants who terminated pretrial services during 1994. Of the defendants released, 85% completed pretrial services without violating the conditions of their release (table 2.8).

In the same year, 26,299 defendants were detained for some period of time prior to the disposition of their case (table 2.3). Those defendants detained comprised about 58% of all defendants terminating pretrial services during 1994. Included are those who were detained prior to having a preliminary hearing with the magistrate, at which point they could have been either released or ordered to have a detention hearing. Of the 26,299 defendants detained, 54% were denied bail, which guaranteed that they would remain detained through their case disposition.

Pretrial detention hearings were held for 18,608 defendants. Of these, 14,103, or more than 75%, were ordered detained (table 2.5).

Of the 27,607 defendants released prior to trial, 15% violated a condition of their release (table 2.7). The majority (72%) of these violations were technical violations of the bail conditions. Defendants released on financial conditions were most likely (24%) to incur some violation of the conditions of their release (table 2.8). Conversely, defendants given conditional release violated their release at the lowest rate (4%). Five percent of all released defendants had their release revoked.

Pretrial outcomes by offense categories

Releases (table 2.1) — The use of methods of release varied among major offense categories (figure 2.1).

¹18 U.S.C. § 3142(e) (1984)

²18 U.S.C. § 3142(c) (1984)

Within each offense category, the highest percentage of defendants released was on unsecured bond.

Violent offenders were the least likely to be released prior to criminal trial — only 38% were released during 1994 (table 2.1). However, among violent offenders the likelihood of release varies greatly; 23% of those charged with robbery were released compared to 70% of those charged with rape and 90% of those charged with negligent manslaughter. Of those defendants released on robbery charges, approximately 26% were released on personal recognizance. Of those defendants released on rape charges, 60% were released on personal recognizance. And of those defendants released on negligent manslaughter charges, 72% were released on personal recognizance.

About half of all drug defendants were released. Defendants facing non-trafficking charges were more likely to be released than the more numerous defendants accused of trafficking offenses. Moreover, among those released, defendants charged with drug offenses other than trafficking were 4 times more likely to be released on personal recognizance as those charged with trafficking.

Detentions (tables 2.3–2.6) —

Defendants charged with violent offenses were the most likely to be detained (table 2.3). Eighty percent of violent offenders were detained. Violent offenders also were the most likely to be denied bail (70% of those detained). Seventy-four percent of defendants charged with drug offenses were detained. Of drug offenders detained, 55% were denied bail. Property and public-order defendants were less likely to be detained than violent and drug defendants — 55% of public-order and 27% of property defendants were detained. Fifty percent of those public-order defendants detained and 44% of those property defendants detained were denied bail. Of public-order defendants, those charged with immigration offenses were the most likely to be detained (83%).

The use of methods of release varied among offense categories

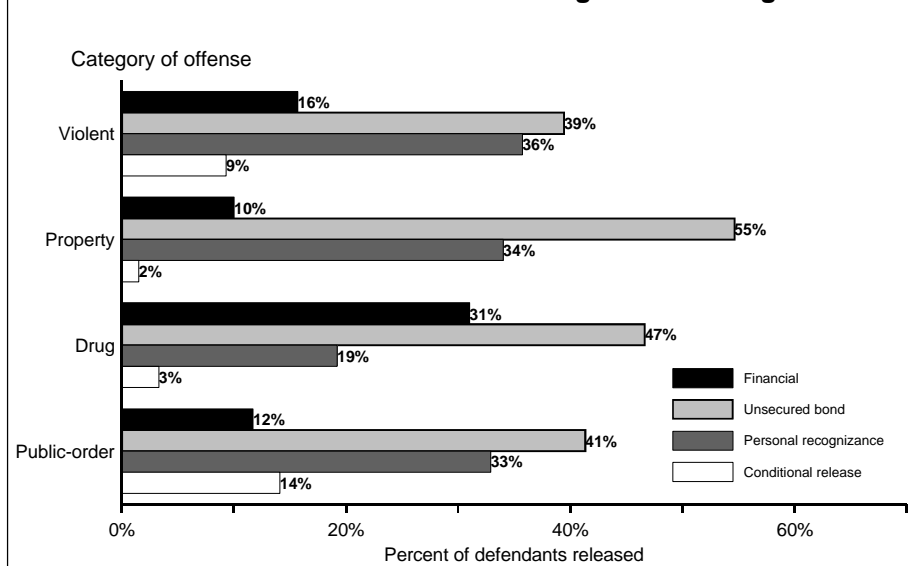


Figure 2.1. Type of release for defendants released prior to case disposition, October 1, 1993–September 30, 1994

For 67% of defendants charged with violent offenses, it was decided at the preliminary hearing that a detention hearing was warranted (table 2.5). By comparison, 55% of those charged with drug offenses, 33% of those charged with public-order offenses, and 18% of those charged with property offenses were ordered to have a detention hearing. Of defendants charged with violent offenses, those most likely to have a pretrial detention hearing were those charged with murder, kidnaping, rob-

bery, or threats against the President. The least likely were those charged with negligent manslaughter.

Almost 67% of those charged with violent offenses had a pretrial detention hearing. Of these, nearly 84% were ordered detained. Forty-five percent of those charged with weapons offenses had a pretrial detention hearing; however, 81% of these defendants were ordered detained. Similar patterns hold for those charged with immigration and escape

Defendants who were female, non-Hispanic, employed, or had no known history of drug abuse were more likely to be released prior to case disposition during 1994

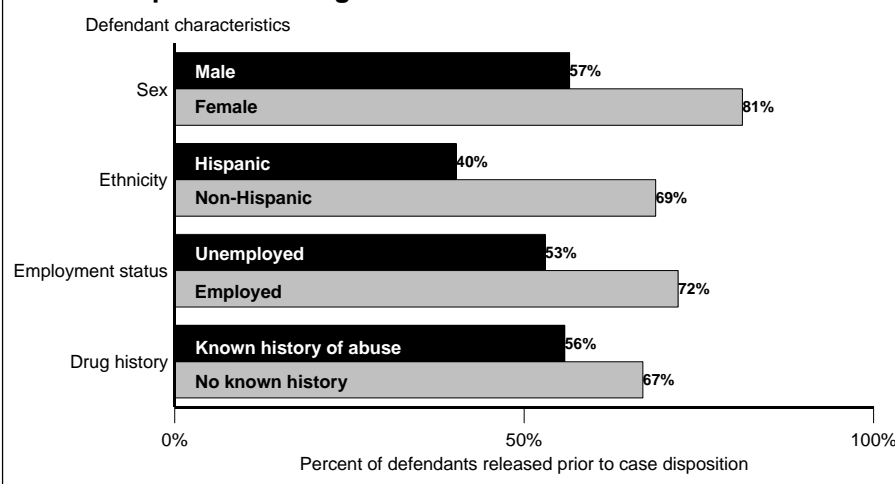


Figure 2.2. Characteristics of defendants released prior to case disposition in U.S. district court, October 1, 1993–September 30, 1994

offenses. Those charged with drug trafficking were more likely to have a detention hearing than those charged with other drug-related offenses (57% compared to 41%). However, once the hearing was held those in both categories had similar chances of being ordered detained (table 2.5).

Violations (table 2.7) — Of defendants who terminated pretrial services during 1994, those charged with drug offenses, who were eventually released prior to trial, were the most likely (24%) to incur at least one violation during the release period (table 2.7). Those charged with violent offenses were the most likely (10%) to have their release revoked. Those charged with public-order offenses had the best pretrial release record; 9% incurred at least one violation during this release period, and 3% had their release revoked.

Pretrial outcomes across demographic groups

Releases (table 2.2) — Females were more likely (81%) than males (57%) to be released during 1994 (figure 2.2). Males had a greater chance of having a financial condition imposed than females (20% and 11%, respectively) (table 2.2). Sixty-nine percent of all defendants identified as non-Hispanic were released during 1994 compared to 40% of Hispanics. Non-Hispanic releasees were almost 3 times as likely to be released on personal recognizance as Hispanics.

Education level and the likelihood of release were positively correlated: about half the defendants with less than a high school education were released during 1994 while 81% of those who had completed college were released. Releasees with a college degree were less likely to receive financial conditions and slightly more likely to be released on personal recognizance than their counterparts who had less education.

Defendants with a known history of drug abuse were released less frequently than defendants with no known drug history. However, among all released defendants, drug

abuse history does not appear to have had a major effect on the form of pretrial release.

Detentions (tables 2.4 and 2.6) — Males were nearly twice as likely as females to be detained (table 2.4). Of all detainees, 55% of the men and 42% of the women were denied bail. Hispanics were nearly twice as likely as non-Hispanics to be detained. However, among detainees, Hispanics had a 50% chance and non-Hispanics a 57% chance of being denied bail.

Younger defendants were more likely to be detained. Sixty-eight percent of defendants between ages 16 and 18 were detained compared to 44% of those over age 40. However, of all defendants detained, the chance of being denied bail were similar across all age groups. The same patterns apply to education level.

Male defendants were nearly twice as likely as female defendants to have a detention hearing and were more likely to be ordered detained as a result of the hearing (table 2.6). Blacks had a higher chance of having a detention hearing than those of other races and were more likely to be ordered detained as a result of the hearing.

The likelihood of having a detention hearing increased with the number of prior convictions, the severity of the defendant's criminal history, and a current sentence to supervision. Further, 48% of those with a history of drug abuse had detention hearings compared to 37% of those without such a past. Those with a known history of drug abuse were also more likely to be ordered detained.

Violations (table 2.9) — Males who were released were more likely than females to incur a violation during the pretrial release period and were more likely to have their release revoked. Defendants with no prior criminal history were less likely to have a pretrial release violation than those with a prior conviction. Among defendants having prior convictions, those previously convicted for violent crimes were the most likely to incur a

violation. Released defendants with a known drug history were almost 3 times more likely to incur a violation than those with no known drug history. Violators with a history of drug use were more likely to have their release revoked.

Table 2.1. Type of pretrial release, by offense, October 1, 1993–September 30, 1994

Most serious offense charged	Percent released	Of defendants released at any time prior to case disposition, percent released on				Number of defendants	
		Financial ^a	Unsecured bond	Personal recognizance	Conditional release	Released	All defendants
All offenses^b	60.6%	18.1%	47.7%	28.6%	5.6%	27,607	45,584
Violent offenses	38.0%	15.7%	39.4%	35.7%	9.3%	1,174	3,091
Murder ^c	49.3	19.6	30.4	34.8	15.2	112	227
Negligent manslaughter	90.0	16.7	5.6	72.2	5.6	18	20
Assault	64.8	6.8	42.8	40.2	10.2	383	591
Robbery	23.0	26.4	41.2	25.5	6.9	420	1,829
Rape	70.1	5.3	22.1	60.3	12.2	131	187
Other sex offenses ^c	73.9	13.2	51.5	29.4	5.9	68	92
Kidnaping	27.9	16.1	74.2	6.5	3.2	31	111
Threats against the President	32.4	9.1	27.3	45.5	18.2	11	34
Property offenses	83.8%	10.0%	54.6%	34.0%	1.5%	9,748	11,629
Fraudulent	85.3%	10.8%	56.0%	32.0%	1.2%	7,286	8,545
Embezzlement	94.9	2.8	54.6	42.0	0.6	1,405	1,481
Fraud ^c	83.7	12.6	55.8	30.3	1.3	4,965	5,930
Forgery	86.0	11.6	61.8	24.9	1.6	490	570
Counterfeiting	75.5	15.5	57.3	25.8	1.4	426	564
Other	79.8%	7.5%	50.2%	40.0%	2.3%	2,462	3,084
Burglary	41.0	14.1	40.8	39.4	5.6	71	173
Larceny ^c	85.8	6.0	49.9	41.7	2.3	1,875	2,185
Motor vehicle theft	54.6	9.8	64.3	25.0	0.9	112	205
Arson and explosives	73.8	20.7	45.5	31.4	2.5	121	164
Transportation of stolen property	77.4	13.2	61.0	24.7	1.1	182	235
Other property offenses ^c	82.8	2.0	32.7	62.4	3.0	101	122
Drug offenses	51.1%	31.0%	46.6%	19.2%	3.3%	9,814	19,218
Trafficking	50.0	33.0	48.0	15.6	3.5	8,697	17,404
Other drug offenses	61.6	15.0	35.6	47.2	2.1	1,117	1,814
Public-order offenses	58.9%	11.7%	41.3%	32.9%	14.1%	6,794	11,526
Regulatory	83.0%	10.7%	49.2%	38.7%	1.4%	1,111	1,339
Agriculture	96.6	1.8	36.6	60.7	0.9	112	116
Antitrust	100	3.3	30.0	66.7	...	30	30
Food and drug	97.6	12.2	56.1	31.7	...	41	42
Transportation	91.4	5.7	58.5	35.8	...	53	58
Civil rights	87.0	6.7	61.7	31.7	...	60	69
Communications	90.8	3.4	54.2	42.4	...	59	65
Custom laws	75.9	29.5	40.9	27.3	2.3	44	58
Postal laws	86.7	4.0	61.3	31.5	3.2	124	143
Other regulatory offenses	77.6	14.3	47.6	36.6	1.5	588	758
Other	55.8%	11.9%	39.7%	31.7%	16.6%	5,683	10,187
Weapons	54.0	17.9	54.0	25.1	3.0	1,478	2,739
Immigration offenses	35.1	12.9	19.9	6.4	60.8	1,357	3,866
Tax law violations ^c	96.2	3.8	61.4	34.5	0.3	655	681
Bribery	85.6	22.2	53.3	23.4	1.2	167	195
Perjury, contempt, and intimidation	77.0	12.3	57.1	27.9	2.6	154	200
National defense	82.0	23.2	43.9	18.3	14.6	82	100
Escape	26.2	14.7	54.1	20.2	11.0	109	416
Racketeering and extortion	61.9	25.8	55.5	16.9	1.8	337	544
Gambling	98.2	6.2	51.6	42.2	...	161	164
Liquor offenses	90.9	—	—	—	...	10	11
Obscene material ^c	90.9	13.3	63.3	23.3	...	30	33
Migratory birds	100	...	12.5	87.5	...	40	40
All other offenses ^c	92.1	1.8	19.9	74.9	3.4	1,103	1,198

Note: Released defendants include some defendants who were also detained prior to trial. Total also includes defendants for whom release status data were unavailable. Percentages in these tables are not directly comparable to those in the 1993 and prior compendia; see *Chapter notes*, items 1 and 2, p. 36.

—Too few cases to obtain statistically reliable data.
 ...No case of this type occurred in the data.

^aIncludes deposit bond, surety bond, and collateral bond.

^bIncludes 120 defendants for whom an offense category could not be determined, 77 of whom were released.

^cIn this table, "Murder" includes nonnegligent manslaughter.

"Other sex offenses" may include some nonviolent offenses.

"Fraud" excludes tax fraud.

"Larceny" excludes transportation of stolen property.

"Other property offenses" excludes fraudulent property offenses, and includes destruction of property and trespass.

"Tax law violations" includes tax fraud.

"Obscene material" denotes the mail or transport thereof.

"All other offenses" includes offenses with unknown or unclassifiable offense type.

Table 2.2. Type of pretrial release, by defendant characteristics, October 1, 1993–September 30, 1994

Defendant characteristic	Percent released	Of defendants released at any time prior to case disposition, percent released on				Number of defendants	
		Financial ^a	Unsecured bond	Personal recognizance	Conditional release	Released	All defendants
All offenders^b	60.6%	18.1%	47.7%	28.6%	5.6%	27,607	45,584
Sex							
Male	56.5%	20.0%	46.6%	27.1%	6.3%	21,489	38,052
Female	81.2	11.3	52.0	33.7	3.0	6,096	7,507
Race							
White	62.2%	18.3%	46.8%	27.6%	7.3%	18,573	29,867
Black	55.7	18.5	53.2	26.7	1.5	7,456	13,390
Other	67.8	14.1	32.6	48.4	4.9	1,578	2,327
Ethnicity							
Hispanic	40.3%	29.5%	37.4%	11.1%	22.1%	5,271	13,078
Non-Hispanic	68.8	15.3	50.9	32.1	1.7	21,182	30,789
Age							
16-18 years	56.0%	14.6%	42.2%	28.3%	14.8%	431	770
19-20 years	57.2	15.6	46.2	30.0	8.2	1,386	2,422
21-30 years	54.8	19.3	46.7	26.6	7.4	9,121	16,653
31-40 years	59.7	20.4	48.3	26.3	5.1	7,914	13,256
Over 40 years	70.9	16.7	52.0	29.3	2.0	7,917	11,168
Education							
Less than high school graduate	51.5%	23.6%	50.1%	21.2%	5.1%	6,986	13,574
High school graduate	67.3	17.5	51.5	29.0	2.0	8,687	12,912
Some college	74.0	17.9	50.7	29.9	1.6	5,981	8,084
College graduate	80.8	15.7	52.9	30.6	0.8	2,771	3,428
Marital status							
Never married	57.7%	18.8%	51.3%	26.5%	3.3%	7,932	13,747
Divorced/separated	65.6	18.4	52.7	27.1	1.7	5,044	7,693
Married	70.8	19.0	50.6	28.1	2.3	9,922	14,007
Common law	51.8	25.7	47.8	21.7	4.9	1,559	3,009
Other	44.2	9.3	21.8	40.8	28.1	3,150	7,128
Employment status at arrest							
Unemployed	53.0%	18.7%	52.5%	25.3%	3.5%	9,298	17,544
Employed	72.0	19.0	49.6	29.3	2.1	15,711	21,831
Criminal record							
No convictions ^c	72.3%	14.9%	47.3%	32.1%	5.6%	12,351	17,078
Prior convictions							
Misdemeanor only	70.2	18.5	46.2	30.8	4.5	5,114	7,280
Felony							
Nonviolent	46.9	21.4	50.6	21.4	6.7	4,042	8,613
Violent	32.8	22.9	44.6	22.5	10.1	1,968	6,009
Number of prior convictions							
1	62.3%	21.0%	47.7%	26.6%	4.8%	4,613	7,403
2 to 4	50.5	20.0	47.7	25.1	7.3	4,530	8,974
5 or more	35.9	19.6	46.8	26.0	7.6	1,981	5,525
Criminal justice status							
Not under supervision	69.2%	17.1%	47.1%	29.8%	5.9%	22,075	31,909
Pretrial release	59.0	25.8	52.9	19.7	1.6	1,317	2,232
Probation	50.6	23.6	51.5	22.5	2.4	1,313	2,596
Parole	25.4	21.9	48.2	24.7	5.3	438	1,726
Court appearance history							
No prior arrests	71.2%	15.1%	47.4%	31.9%	5.6%	13,224	18,586
Failure to appear							
None	56.4	20.8	48.7	25.2	5.3	12,563	22,277
1	41.0	21.1	44.8	25.9	8.1	1,064	2,595
More than 1	35.5	20.4	43.0	29.8	6.8	754	2,124
Drug abuse							
No known abuse	67.0%	18.4%	51.8%	27.8%	2.0%	18,614	27,773
Drug history	55.8	21.2	52.8	24.6	1.4	4,951	8,866

Note: Released defendants include some defendants who were also detained prior to trial. Total also includes defendants for whom release status data were unavailable. Percentages in these tables are not directly comparable to those in the 1993 and prior compendia; see *Chapter notes*, items 1 and 2, p. 36.

^aIncludes deposit bond, surety bond, and collateral bond.

^bIncludes defendants for whom characteristics could not be determined.

^cIncludes only those defendants whose PSA records explicitly showed no prior convictions.

Table 2.3. Form of pretrial detention, by offense, October 1, 1993–September 30, 1994

Most serious offense charged	Of defendants detained at any time prior to case disposition, percent detained by						Number of defendants	
	Percent detained	Temporary detention ^a	Held on bail for:		Denied bail	Other detentions	Detained	All defendants
			Part of pre- trial period	All of pre- trial period				
All offenses^b	57.7%	2.8%	24.7%	12.1%	53.9%	6.5%	26,299	45,584
Violent offenses	80.2%	1.4%	14.9%	6.1%	70.3%	7.3%	2,478	3,091
Murder ^c	71.8	1.2	16.0	...	75.5	7.4	163	227
Negligent manslaughter	35.0	...	57.1	28.6	14.3	...	7	20
Assault	56.0	1.2	27.5	7.3	54.4	9.7	331	591
Robbery	92.6	1.5	10.3	6.8	74.9	6.5	1,694	1,829
Rape	59.9	0.9	34.8	0.9	56.3	7.1	112	187
Other sex offenses ^c	47.8	...	40.9	13.6	34.1	11.4	44	92
Kidnaping	86.5	...	13.5	3.1	70.8	12.5	96	111
Threats against the President	91.2	9.7	6.5	...	74.2	9.7	31	34
Property offenses	27.0%	2.1%	34.8%	10.6%	43.8%	8.7%	3,138	11,629
Fraudulent	26.1%	2.0%	37.2%	11.1%	42.0%	7.8%	2,226	8,545
Embezzlement	8.9	0.8	40.2	11.4	37.9	9.8	132	1,481
Fraud ^c	28.4	2.0	36.2	10.7	43.0	8.1	1,683	5,930
Forgery	29.5	1.8	50.6	14.9	25.6	7.1	168	570
Counterfeiting	43.1	2.9	32.5	10.7	49.0	4.9	243	564
Other	29.6%	2.3%	29.1%	9.5%	48.4%	10.7%	912	3,084
Burglary	78.0	3.7	16.3	5.9	65.9	8.1	135	173
Larceny ^c	22.2	2.3	36.0	11.6	41.5	8.7	484	2,185
Motor vehicle theft	56.1	3.5	16.5	13.0	47.0	20.0	115	205
Arson and explosives	51.2	...	34.5	2.4	58.3	4.8	84	164
Transportation of stolen property	28.5	...	25.4	4.5	50.7	19.4	67	235
Other property offenses ^c	22.1	3.7	14.8	11.1	51.9	18.5	27	122
Drug offenses	74.4%	2.4%	26.2%	11.3%	55.0%	5.1%	14,292	19,218
Trafficking	76.4	2.2	26.4	11.3	55.2	4.9	13,305	17,404
Other drug offenses	54.4	5.8	23.2	10.3	53.4	7.3	987	1,814
Public-order offenses	55.0%	4.4%	20.4%	17.0%	49.9%	8.3%	6,343	11,526
Regulatory	26.7%	0.6%	33.6%	10.9%	46.2%	8.7%	357	1,339
Agriculture	6.9	...	—	—	—	...	8	116
Antitrust	3.3	...	—	1	30
Food and drug	16.7	...	—	...	—	...	7	42
Transportation	17.2	...	50.0	10.0	40.0	...	10	58
Civil rights	29.0	...	50.0	5.0	35.0	10.0	20	69
Communications	10.8	14.3	—	...	—	—	7	65
Custom laws	44.8	...	38.5	15.4	42.3	3.8	26	58
Postal laws	16.8	...	16.7	12.5	58.3	12.5	24	143
Other regulatory offenses	33.5	0.4	31.9	11.4	46.9	9.4	254	758
Other	58.8%	4.6%	19.7%	17.3%	50.1%	8.3%	5,986	10,187
Weapons	63.8	3.6	19.8	5.3	57.8	13.5	1,747	2,739
Immigration offenses	83.4	6.3	18.4	26.8	44.7	3.8	3,225	3,866
Tax law violations ^c	8.4	...	45.6	7.0	38.6	8.8	57	681
Bribery	26.7	...	50.0	15.4	30.8	3.8	52	195
Perjury, contempt, and intimidation	38.5	...	29.9	9.1	49.4	11.7	77	200
National defense	50.0	2.0	46.0	4.0	46.0	2.0	50	100
Escape	81.3	1.2	7.7	6.2	64.5	20.4	338	416
Racketeering and extortion	55.1	1.0	21.0	8.7	58.3	11.0	300	544
Gambling	7.9	...	61.5	...	38.5	...	13	164
Liquor offenses	27.3	...	—	...	—	...	3	11
Obscene material ^c	21.2	...	—	...	—	—	7	33
Migratory birds	7.5	...	—	3	40
All other offenses ^c	9.5	...	31.6	11.4	42.1	14.9	114	1,198

Note: Detained defendants include some defendants who were also released prior to trial. Total also includes defendants for whom release status data were unavailable. Percentages in this table are not directly comparable to those in the 1993 and prior compendia; see *Chapter notes*, items 1 and 2, p. 36.
 —Too few cases to obtain statistically reliable data.
 ...No case of this type occurred in the data.
^aHeld under 18 U.S.C. 3142 pending deportation, action on prior pretrial release, or probation or parole review.
^bIncludes 120 defendants for whom offense category could not be determined, 48 of whom were detained

^cIn this table, "Murder" includes nonnegligent manslaughter.
 "Other sex offenses" may include some nonviolent offenses.
 "Fraud" excludes tax fraud.
 "Larceny" excludes transportation of stolen property.
 "Other property offenses" excludes fraudulent property offenses, and includes destruction of property and trespass.
 "Tax law violations" includes tax fraud.
 "Obscene material" denotes the mail or transport thereof.
 "All other offenses" includes offenses with unknown or unclassifiable offense type.

Table 2.4. Form of pretrial detention, by defendant characteristics, October 1, 1993–September 30, 1994

Defendant characteristic	Of defendants detained at any time prior to case disposition, percent detained by						Number of defendants	
	Percent detained	Temporary detention ^a	Held on bail for:		Denied bail	Other detentions	Detained	All defendants
			Part of pre-trial period	All of pre-trial period				
All offenders^b	57.7%	2.8%	24.7%	12.1%	53.9%	6.5%	26,299	45,584
Sex								
Male	62.1%	2.8%	23.0%	12.2%	55.3%	6.7%	23,627	38,052
Female	35.5	2.1	39.8	10.9	41.9	5.3	2,668	7,507
Race								
White	56.2%	2.7%	25.9%	15.1%	50.6%	5.6%	16,778	29,867
Black	61.9	3.0	21.9	6.7	59.8	8.6	8,291	13,390
Other	52.9	1.2	28.0	6.7	58.9	5.3	1,230	2,327
Ethnicity								
Hispanic	82.6%	4.0%	22.4%	19.9%	49.8%	3.8%	10,807	13,078
Non-Hispanic	47.7	1.8	26.4	6.3	57.1	8.3	14,678	30,789
Age								
16-18 years	67.7%	1.9%	28.6%	10.9%	54.1%	4.4%	521	770
19-20 years	65.9	3.0	28.3	11.8	52.1	4.8	1,597	2,422
21-30 years	64.7	2.8	23.2	13.2	54.0	6.8	10,769	16,653
31-40 years	59.4	3.2	25.1	11.5	54.3	6.0	7,873	13,256
Over 40 years	44.0	2.0	27.3	11.1	52.6	6.9	4,913	11,168
Education								
Less than high school graduate	70.5%	4.2%	23.6%	10.9%	55.4%	6.0%	9,566	13,574
High school graduate	51.0	2.2	28.2	7.7	54.9	7.0	6,588	12,912
Some college	44.4	1.6	32.2	8.0	52.5	5.8	3,589	8,084
College graduate	31.8	1.6	31.7	8.3	52.8	5.6	1,090	3,428
Marital status								
Never married	62.8%	2.6%	25.0%	8.8%	56.8%	6.9%	8,628	13,747
Divorced/separated	53.0	2.5	27.6	8.5	53.7	7.6	4,076	7,693
Married	46.0	3.4	28.6	10.4	52.5	5.2	6,449	14,007
Common law	72.4	3.6	24.8	10.7	56.1	4.7	2,179	3,009
Other	69.7	2.0	16.9	23.6	49.9	7.6	4,967	7,128
Employment status at arrest								
Unemployed	66.4%	2.8%	22.2%	8.3%	57.9%	8.8%	11,650	17,544
Employed	46.3	3.0	30.9	10.3	51.4	4.3	10,111	21,831
Criminal record								
No convictions ^c	44.3%	2.0%	30.1%	13.6%	50.6%	3.7%	7,572	17,078
Prior convictions								
Misdemeanor only	52.0	1.8	33.4	13.0	47.3	4.5	3,787	7,280
Felony								
Nonviolent	70.5	3.7	19.0	11.9	56.7	8.7	6,072	8,613
Violent	83.2	3.4	13.9	9.7	62.8	10.1	5,002	6,009
Number of prior convictions								
1	58.5%	2.6%	27.6%	11.0%	53.0%	5.8%	4,333	7,403
2 to 4	68.5	3.3	21.6	10.8	56.1	8.3	6,147	8,974
5 or more	79.3	3.4	13.6	12.9	60.0	10.2	4,381	5,525
Criminal justice status								
Not under supervision	49.7%	1.6%	30.1%	13.5%	50.3%	4.5%	15,847	31,909
Pretrial release	63.6	3.3	26.4	6.2	59.7	4.4	1,419	2,232
Probation	69.7	5.1	23.8	8.3	57.6	5.2	1,810	2,596
Parole	86.2	9.4	9.6	8.7	65.5	6.7	1,487	1,726
Court appearance history								
No prior arrests	45.6%	2.4%	29.2%	13.4%	50.9%	4.1%	8,467	18,586
Failure to appear								
None	63.0	3.2	24.0	11.0	54.3	7.5	14,031	22,277
1	79.1	2.4	18.4	12.1	57.7	9.4	2,052	2,595
More than 1	82.3	1.3	16.2	14.5	60.9	7.1	1,748	2,124
Drug abuse								
No known abuse	50.5%	2.9%	27.7%	10.1%	53.5%	5.9%	14,025	27,773
Drug history	65.3	3.0	24.6	7.7	56.9	7.8	5,786	8,866

Note: Detained defendants include defendants who were also released prior to trial. Total also includes defendants for whom release status data were unavailable. Percentages in this table are not directly comparable to those in the 1993 and prior compendia; see *Chapter notes*, items 1 and 2, p. 36.

^aHeld under 18 U.S.C. 3142 pending deportation, action on prior pretrial release, or probation or parole review.

^bIncludes defendants for whom these characteristics could not be determined.

^cIncludes only those defendants whose PSA records explicitly showed no prior convictions.

Table 2.5. Pretrial detention hearing outcomes, by offense, October 1, 1993–September 30, 1994

Most serious offense charged	All defendants	Defendants with pretrial detention hearings			
		Number of defendants Hearings held	Ordered detained	Percent of defendants with hearings held	Of defen- dants with hearings held, percent ordered detained
All offenses^a	45,584	18,608	14,103	40.8%	75.8%
Violent offenses	3,091	2,064	1,732	66.8%	83.9%
Murder ^b	227	150	123	66.1	82.0
Negligent manslaughter	20	5	1	25.0	20.0
Assault	591	245	178	41.5	72.7
Robbery	1,829	1,434	1,265	78.4	88.2
Rape	187	92	60	49.2	65.2
Other sex offenses ^b	92	26	14	28.3	53.8
Kidnaping	111	87	68	78.4	78.2
Threats against the President	34	25	23	73.5	92.0
Property offenses	11,629	2,049	1,370	17.6%	66.9%
Fraudulent	8,545	1,440	933	16.9%	64.8%
Embezzlement	1,481	80	51	5.4	63.8
Fraud ^b	5,930	1,103	719	18.6	65.2
Forgery	570	87	43	15.3	49.4
Counterfeiting	564	170	120	30.1	70.6
Other	3,084	609	437	19.7%	71.8%
Burglary	173	106	87	61.3	82.1
Larceny ^b	2,185	294	200	13.5	68.0
Motor vehicle theft	205	78	54	38.0	69.2
Arson and explosives	164	70	49	42.7	70.0
Transportation of stolen property	235	43	33	18.3	76.7
Other property offenses ^b	122	18	14	14.8	77.8
Drug offenses	19,218	10,639	7,821	55.4%	73.5%
Trafficking	17,404	9,898	7,295	56.9	73.7
Other drug offenses	1,814	741	526	40.8	71.0
Public-order offenses	11,526	3,822	3,155	33.2%	82.5%
Regulatory	1,339	240	163	17.9%	67.9%
Agriculture	116	7	5	6.0	71.4
Antitrust	30	1	0	3.3	0.0
Food and drug	42	5	1	11.9	20.0
Transportation	58	7	4	12.1	57.1
Civil rights	69	12	7	17.4	58.3
Communications	65	4	4	6.2	100
Custom laws	58	17	11	29.3	64.7
Postal laws	143	19	14	13.3	73.7
Other regulatory offenses	758	168	117	22.2	69.6
Other	10,187	3,582	2,992	35.2%	83.5%
Weapons	2,739	1,241	1,009	45.3	81.3
Immigration offenses	3,866	1,612	1,436	41.7	89.1
Tax law violations ^b	681	38	22	5.6	57.9
Bribery	195	28	16	14.4	57.1
Perjury, contempt, and intimidation	200	53	37	26.5	69.8
National defense	100	40	23	40.0	57.5
Escape	416	250	218	60.1	87.2
Racketeering and extortion	544	233	174	42.8	74.7
Gambling	164	6	4	3.7	—
Liquor offenses	11	2	2	18.2	—
Obscene material ^b	33	5	2	15.2	—
Migratory birds	40	2	0	5.0	—
All other offenses ^b	1,198	72	49	6.0	68.1

Note: Defendants may also be detained for failure to meet bail conditions, or temporarily detained pending action of other agencies. Percentages in this table are not directly comparable to those in the 1993 and prior compendia; see *Chapter notes*, items 1 and 2, p. 36.

—Too few cases to obtain statistically reliable data.

^aIncludes 120 defendants for whom offense category could not be determined, 34 of whom had pretrial detention hearings.

^bIn this table, "Murder" includes nonnegligent manslaughter. "Other sex offenses" may include some nonviolent offenses. "Fraud" excludes tax fraud. "Larceny" excludes transportation of stolen property. "Other property offenses" excludes fraudulent property offenses, and includes destruction of property and trespass. "Tax law violations" includes tax fraud. "Obscene material" denotes the mail or transport thereof. "All other offenses" includes offenses with unknown or unclassifiable offense type.

Table 2.6. Pretrial detention hearings, by defendant characteristics, October 1, 1993–September 30, 1994

Defendant characteristic	All defendants	Defendants with pretrial detention hearings			
		Number of defendants		Percent of defendants with hearings held	Of defendants with hearings held, percent ordered detained
		Hearings held	Ordered detained		
All offenders^a	45,584	18,608	14,103	40.8%	75.8%
Sex					
Male	38,052	16,830	12,997	44.2%	77.2%
Female	7,507	1,775	1,104	23.6	62.2
Race					
White	29,867	11,338	8,451	38.0%	74.5%
Black	13,390	6,288	4,940	47.0	78.6
Other	2,327	982	712	42.2	72.5
Ethnicity					
Hispanic	13,078	6,954	5,355	53.2%	77.0%
Non-Hispanic	30,789	11,145	8,340	36.2	74.8
Age					
16-18 years	770	377	281	49.0%	74.5%
19-20 years	2,422	1,108	832	45.7	75.1
21-30 years	16,653	7,527	5,787	45.2	76.9
31-40 years	13,256	5,582	4,252	42.1	76.2
Over 40 years	11,168	3,566	2,569	31.9	72.0
Education					
Less than high school graduate	13,574	6,899	5,276	50.8%	76.5%
High school graduate	12,912	5,008	3,603	38.8	71.9
Some college	8,084	2,728	1,870	33.7	68.5
College graduate	3,428	824	572	24.0	69.4
Marital status					
Never married	13,747	6,451	4,877	46.9%	75.6%
Divorced/separated	7,693	3,015	2,181	39.2	72.3
Married	14,007	4,719	3,365	33.7	71.3
Common law	3,009	1,597	1,215	53.1	76.1
Other	7,128	2,826	2,465	39.6	87.2
Employment status at arrest					
Unemployed	17,544	8,555	6,721	48.8%	78.6%
Employed	21,831	7,536	5,164	34.5	68.5
Criminal record					
No convictions ^b	17,078	5,436	3,807	31.8%	70.0%
Prior convictions					
Misdemeanor only	7,280	2,582	1,772	35.5	68.6
Felony					
Nonviolent	8,613	4,210	3,428	48.9	81.4
Violent	6,009	3,620	3,136	60.2	86.6
Number of prior convictions					
1	7,403	3,122	2,289	42.2%	73.3%
2 to 4	8,974	4,297	3,430	47.9	79.8
5 or more	5,525	2,993	2,617	54.2	87.4
Criminal justice status					
Not under supervision	31,909	11,209	7,920	35.1%	70.7%
Pretrial release	2,232	1,090	843	48.8	77.3
Probation	2,596	1,319	1,040	50.8	78.8
Parole	1,726	1,081	974	62.6	90.1
Court appearance history					
No prior arrests	18,586	6,042	4,279	32.5%	70.8%
Failure to appear					
None	22,277	9,848	7,581	44.2	77.0
1	2,595	1,441	1,178	55.5	81.7
More than 1	2,124	1,277	1,065	60.1	83.4
Drug abuse					
No known abuse	27,773	10,380	7,460	37.4%	71.9%
Drug history	8,866	4,242	3,279	47.8	77.3

Note: Percentages in this table are not directly comparable to those in the 1993 and prior compendia; see Chapter notes, items 1 and 2, p. 36.

^aIncludes defendants for whom these characteristics are unknown.

^bIncludes only those defendants whose PSA records explicitly showed no prior convictions.

Table 2.7. Behavior of defendants released prior to trial, by offense, October 1, 1993–September 30, 1994

Most serious offense charged	Percent of released defendants who had							Release revoked	Number of released defendants
	Violations while on release					Technical violations of bail conditions			
	No violation	At least one violation	Failed to appear	New offense charged					
			Felony	Misdemeanor					
All offenses*	84.8%	15.2%	2.3%	1.8%	1.5%	10.9%	5.2%	27,607	
Violent offenses	79.2%	20.8%	2.2%	2.1%	2.5%	15.8%	10.2%	1,174	
Property offenses	89.8%	10.2%	1.5%	1.6%	1.2%	6.9%	3.4%	9,748	
Fraudulent offenses	90.5	9.5	1.6	1.6	1.1	6.3	3.0	7,286	
Other property offenses	87.7	12.3	1.3	1.7	1.7	8.6	4.5	2,462	
Drug offenses	76.3%	23.7%	3.8%	2.3%	2.0%	17.7%	7.7%	9,814	
Public-order offenses	90.9%	9.1%	1.4%	1.2%	1.0%	6.2%	3.3%	6,794	
Regulatory offenses	92.3	7.7	1.2	0.5	0.3	6.0	2.3	1,111	
Other public-order offenses	90.6	9.4	1.5	1.3	1.2	6.3	3.5	5,683	

Note: Data describe defendants whose pretrial services were terminated during 1994. A defendant with more than one type of violation appears in more than one column. A defendant with more than one of the same type of violation appears only once in that column. Therefore, the sum of individual violations exceeds the total. Not all violations resulted in revocation. For further information; see *chapter note 1, p.36*.

*Includes 77 defendants for whom offense category could not be determined.

Table 2.8. Behavior of defendants released prior to trial, by type of release, October 1, 1993–September 30, 1994

	Percent of released defendants who had							Release revoked	Number of released defendants
	Violations while on release					Technical violations of bail conditions			
	No violation	At least one violation	Failed to appear	New offense charged					
			Felony	Misdemeanor					
All releases	84.8%	15.2%	2.3%	1.8%	1.5%	10.9%	5.2%	27,607	
Financial release	76.1%	23.9%	4.8%	3.2%	2.3%	15.9%	7.2%	4,998	
Percentage/cash bond	75.0	25.0	5.8	3.2	2.3	16.3	8.4	2,440	
Collateral bond	76.5	23.5	3.2	3.5	2.7	16.1	6.6	1,833	
Corporate surety	78.8	21.2	5.7	2.3	1.5	14.1	4.7	725	
Unsecured bond	88.4%	11.6%	1.6%	1.0%	1.1%	8.7%	4.2%	7,887	
Personal recognizance	84.6%	15.4%	2.0%	1.8%	1.6%	11.4%	5.4%	13,181	
Conditional release	96.4%	3.6%	0.5%	0.5%	0.1%	2.5%	2.1%	1,541	

Note: Data describe defendants whose pretrial services were terminated during 1994. A defendant with more than one type of violation appears in more than one column. A defendant with more than one of the same type of violation appears only once in that column. Therefore, the sum of individual violations exceeds the total. Not all violations resulted in revocation. For further information; see *chapter note 1, p.36*.

Table 2.9. Behavior of defendants released prior to trial, by defendant characteristics, October 1, 1993–September 30, 1994

Defendant characteristic	Percent of released defendants who had:							Number of released defendants
	Violations while on release					Technical violations of bail conditions	Release revoked	
	No violation	At least one violation	Failed to appear	New offense charged				
			Felony	Misdemeanor				
All defendants^a	84.8%	15.2%	2.3%	1.8%	1.5%	10.9%	5.2%	27,607
Sex								
Male	83.7%	16.3%	2.5%	2.0%	1.7%	11.5%	5.7%	21,489
Female	88.6	11.4	1.7	1.0	0.9	8.9	3.6	6,096
Race								
White	86.8%	13.2%	2.3%	1.4%	1.3%	9.2%	4.0%	18,573
Black	79.6	20.4	2.3	2.8	1.9	15.3	7.9	7,456
Other	85.9	14.1	2.3	0.9	2.0	10.3	5.9	1,578
Ethnicity								
Hispanic	83.4%	16.6%	5.4%	1.5%	1.1%	9.9%	4.4%	5,271
Non-Hispanic	85.0	15.0	1.6	1.8	1.6	11.3	5.4	21,182
Age								
16-18 years	78.0%	22.0%	3.5%	3.7%	2.8%	16.2%	9.5%	431
19-20 years	79.7	20.3	3.0	2.5	2.5	14.5	7.6	1,386
21-30 years	81.6	18.4	2.8	2.3	1.9	13.2	6.5	9,121
31-40 years	82.6	17.4	2.4	1.8	1.7	12.9	5.8	7,914
Over 40 years	90.9	9.1	1.6	0.9	0.8	6.3	2.8	7,917
Education								
Less than high school graduate	78.5%	21.5%	3.6%	2.4%	2.1%	15.3%	8.1%	6,986
High school graduate	83.7	16.3	1.9	2.0	1.6	12.2	5.5	8,687
Some college	86.0	14.0	2.0	1.5	1.6	10.1	4.4	5,981
College graduate	92.2	7.8	1.3	1.0	0.7	5.5	1.9	2,771
Marital status								
Never married	78.9%	21.1%	2.7%	2.4%	2.4%	15.7%	7.6%	7,932
Divorced/separated	82.5	17.5	2.1	2.1	1.5	13.3	6.2	5,044
Married	89.5	10.5	2.0	1.2	1.0	7.1	3.2	9,922
Common law	76.4	23.6	3.8	2.8	2.4	16.7	8.3	1,559
Other	92.9	7.1	2.0	0.8	0.6	4.5	2.4	3,150
Employment status at arrest								
Unemployed	80.0%	20.0%	2.7%	2.4%	1.9%	14.9%	7.8%	9,298
Employed	86.4	13.6	2.1	1.6	1.4	9.6	4.1	15,711
Criminal record								
No convictions ^b	91.8%	8.2%	1.8%	0.8%	0.5%	5.6%	2.0%	12,351
Prior convictions								
Misdemeanor only	80.3	19.7	2.2	2.1	2.8	14.4	7.5	5,114
Felony								
Nonviolent	77.4	22.6	3.4	2.9	2.2	16.5	9.4	4,042
Violent	73.1	26.9	3.0	4.0	2.8	19.9	11.2	1,968
Number of prior convictions								
1	82.3%	17.7%	2.7%	2.0%	1.8%	12.9%	6.4%	4,613
2 to 4	76.6	23.4	2.6	2.8	2.8	17.4	9.7	4,530
5 or more	70.8	29.2	3.4	4.1	3.8	21.1	12.5	1,981
Criminal justice status								
Not under supervision	87.2%	12.8%	2.1%	1.3%	1.2%	9.3%	4.0%	22,075
Pretrial release	72.1	27.9	3.0	4.9	3.6	19.4	10.9	1,317
Probation	74.0	26.0	3.4	3.3	2.4	19.3	11.5	1,313
Parole	75.8	24.2	4.1	4.1	3.0	14.8	10.3	438
Court appearance history								
No prior arrests	91.5%	8.5%	1.8%	0.8%	0.6%	5.8%	2.1%	13,224
Failure to appear								
None	80.2	19.8	2.4	2.4	2.2	14.5	7.3	12,563
1	71.6	28.4	4.2	3.8	2.8	21.1	11.8	1,064
More than 1	63.0	37.0	6.5	4.6	4.4	26.0	15.6	754
Drug abuse								
No known abuse	88.4%	11.6%	2.1%	1.5%	1.3%	7.7%	3.5%	18,614
Drug history	68.1	31.9	2.9	3.1	2.5	26.2	12.7	4,951

Note: Data describe defendants whose pretrial services were terminated during fiscal year 1994. A defendant with more than one type of violation appears in more than one column. A defendant with more than one of the same type of violation appears only once in that column. Therefore, the sum of individual violations exceeds the total. Not all violations resulted in revocation. For further information, see *Chapter notes*, item 1, p. 36.

^aIncludes defendants for whom these characteristics could not be determined.

^bIncludes only those defendants whose PSA records explicitly showed no prior convictions.

Table 2.10. Length of pretrial detention, by form of release or detention, and most serious offense charged, October 1, 1993–September 30, 1994

Most serious offense charged	Among defendants detained for any time prior to case disposition, the average number of days detained ^a					
	Released on				Not released	
	Financial conditions	Unsecured bond ^b	Personal recognizance	Conditional release	Financial condition	Denied bail
All offenses	34.0 days	38.1 days	39.8 days	52.9 days	77.9 days	118.8 days
Violent offenses	40.1 days	42.5 days	44.4 days	79.1 days	113.9 days	117.9 days
Murder ^c	58.5	71.4	56.7	52.2	...	201.6
Negligent manslaughter	12.6	—	—	...
Assault	14.3	37.0	26.4	35.8	69.3	110.8
Robbery	45.0	40.3	59.3	129.2	119.0	112.9
Rape	—	29.1	20.3	74.5	—	83.7
Other sex offenses ^c	—	92.3	135.8	—	—	62.1
Kidnaping	—	38.2	...	—	...	125.7
Threats against the President	...	—	—	—	...	129.6
Property offenses	30.4 days	32.0 days	31.6 days	43.6 days	62.6 days	84.7 days
Fraudulent	30.4 days	31.7 days	35.4 days	29.2 days	55.0 days	80.7 days
Embezzlement	26.5	41.6	27.3	—	67.6	85.1
Fraud ^c	30.5	32.6	33.7	18.6	51.8	80.6
Forgery	34.6	25.6	17.1	—	69.8	76.0
Counterfeiting	28.2	30.3	58.0	—	57.9	81.1
Other	30.7 days	32.5 days	22.5 days	73 days	83.7 days	92.8 days
Burglary	—	42.2	34.8	—	—	103.3
Larceny ^c	27.3	29.7	18.2	71.4	56.3	74.3
Motor vehicle theft	22.1	25.4	3.5	...	98.4	108.6
Arson and explosives	50.4	49.2	28.8	—	—	128.5
Transportation of stolen property	29.9	25.8	22.8	—	—	106.4
Other property offenses ^c	—	76.5	40.5	—	—	64.5
Drug offenses	34.6 days	39.4 days	43.9 days	96.5 days	92.2 days	138.1 days
Trafficking	35.3	41.1	46.3	96.7	93.3	141.4
Other drug offenses	21.4	19.2	14.8	93.1	70.0	86.6
Public-order offenses	33.8 days	37.9 days	34.6 days	25.1 days	56.7 days	85.9 days
Regulatory	22.5 days	46.8 days	45.9 days	51.6 days	62.1 days	66.6 days
Other	35.4 days	37.0 days	33.7 days	24.8 days	56.6 days	86.8 days
Weapons	45.7	51.9	42.6	70.8	98.3	121.9
Immigration offenses	20.6	16.4	18.0	20.9	50.7	63.5
Tax law violations ^c	12.4	69.4	4.0	—	—	117.1
Bribery	8.5	12.3	...	—	—	103.0
Perjury, contempt, and intimidation	49.6	41.3	54.5	—	—	114.4
National defense	20.2	17.5	3.3	4.0	—	153.9
Escape	29.5	45.1	31.2	76.3	52.0	48.5
Racketeering and extortion	69.9	45.0	50.1	—	218.8	149.7
Gambling	—	51.0	19.0	—
Liquor offenses	—	—
Obscene material ^c	—	5.0
Migratory birds	5.0
All other offenses ^c	12.1	6.8	16.2	...	—	31.3

—Too few cases to obtain statistically reliable data.

...No case of this type occurred in the data.

^aData describe 45,584 defendants who terminated pretrial services during fiscal year 1994. Data exclude defendants for whom periods of detention could not be determined or were unavailable. For further information, see *Chapter notes*, item 1, p. 36.

^bIncludes deposit bond, surety bond, and collateral bond.

^cIn this table, "Murder" includes nonnegligent manslaughter.

"Other sex offenses" may include some nonviolent offenses.

"Fraud" excludes tax fraud.

"Larceny" excludes transportation of stolen property.

"Other property offenses" excludes fraudulent property offenses, and includes destruction of property and trespass.

"Tax law violations" includes tax fraud.

"Obscene material" denotes the mail or transport thereof.

"All other offenses" includes offenses with unknown or unclassifiable offense type.

1) All tables in chapter 2 were created from data in the Pretrial Services Information Act System data base, which is maintained by the Pretrial Services Administration (PSA) within the AOUSC. The data describe 45,584 defendants who terminated pretrial services during October 1, 1993, through September 30, 1994, and whose cases were filed by complaint, indictment, or information. In these tables, the totals (e.g., “all offenses”) included records whose offense or other attributes were missing or indeterminable. The percentage distributions were based on non-missing values, and missing values were reported in a separate row or in a footnote.

Offenses in the PSA are based on the most serious charged offense, as determined by the probation officer responsible for the interview with the defendant. The probation officer classifies the major offense charged into AOUSC four-digit offense codes. For defendants charged with more than one offense on an indictment, the probation officer chooses as the most major charged offense the one carrying the most severe penalty or, in the case of two or more charges carrying the same penalty, the one with the highest offense severity. The offense severity level is determined by the AOUSC, which ranks offenses according to the maximum sentence, type of crime, and maximum fine amount. These four-digit codes are then aggregated into the same offense categories as those used in chapter 1.

For drug offenses, the type of drug activity — trafficking or possession — is obtained by the probation officers from their reading of the indictment or other charging documents. The AOUSC citation manual provides probation officers with detailed instructions on how to code drug crimes.

2) In tables 2.1–2.4, the percentages showing the methods of release or methods of detention were based

on the number of defendants released or the number of defendants detained. In tables 2.5 and 2.6, the percentages were based on the number of defendants who had hearings and were ordered detained. This method departs from the 1993 and prior compendia, in which the percentages were based on the number of defendants terminating pretrial services.